



THE COUNCIL OF
INDEPENDENT COLLEGES

Key Indicators Tool (KIT)

PART A
2020

Dominican University

Prepared by **The Austen Group**,
a Division of Ruffalo Noel Levitz

Sponsored by



CIC KEY INDICATORS TOOL 2020

PART A: STUDENTS AND FACULTY

NATIONAL AND MIDWEST REGION

Dominican University

SECTION	TAB NAME	PAGE
INTRODUCTION	INTRODUCTION	1-4
CIC BENCHMARKING SERVICES	SERVICES	5
KIT TRENDS:		
STUDENTS	STUDENTS TRENDS	6
FACULTY	FACULTY TRENDS	7
 STUDENTS		
1 Total Fall Enrollment		
By Region	1R ENROLL	8
By Financial Resources	1F ENROLL	9
By Enrollment Size	1S ENROLL	10
By Carnegie Classification	1C ENROLL	11
2 First-Year Enrollment		
By Region	2R FY ENROLL	12
By Financial Resources	2F FY ENROLL	13
By Enrollment Size	2S FY ENROLL	14
By Carnegie Classification	2C FY ENROLL	15
3 Admissions Yield Rate (%)		
By Region	3R ADMIT YIELD	16
By Financial Resources	3F ADMIT YIELD	17
By Enrollment Size	3S ADMIT YIELD	18
By Carnegie Classification	3C ADMIT YIELD	19
4 Retention Rate (%)		
By Region	4R RETENTION	20
By Financial Resources	4F RETENTION	21
By Enrollment Size	4S RETENTION	22
By Carnegie Classification	4C RETENTION	23
5 Graduation Rate (%)		
By Region	5R GRAD RATE	24
By Financial Resources	5F GRAD RATE	25
By Enrollment Size	5S GRAD RATE	26
By Carnegie Classification	5C GRAD RATE	27

FACULTY

6 Student/Faculty Ratio

By Region	6R STUDENT FAC	28
By Financial Resources	6F STUDENT FAC	29
By Enrollment Size	6S STUDENT FAC	30
By Carnegie Classification	6C STUDENT FAC	31

7 Part-Time Faculty (%)

By Region	7R PT FAC	32
By Financial Resources	7F PT FAC	33
By Enrollment Size	7S PT FAC	34
By Carnegie Classification	7C PT FAC	35

8 Assistant Professor Average Salary (\$)

By Region	8R ASST PROF	36
By Financial Resources	8F ASST PROF	37
By Enrollment Size	8S ASST PROF	38
By Carnegie Classification	8C ASST PROF	39

9 Associate Professor Average Salary (\$)

By Region	9R ASSOC PROF	40
By Financial Resources	9F ASSOC PROF	41
By Enrollment Size	9S ASSOC PROF	42
By Carnegie Classification	9C ASSOC PROF	43

10 Full Professor Average Salary (\$)

By Region	10R PROF	44
By Financial Resources	10F PROF	45
By Enrollment Size	10S PROF	46
By Carnegie Classification	10C PROF	47

APPENDIX

Data Information: Definitions, IPEDS Sources, and Formulas	APPENDIX A	48-50
--	----------------------------	-------

Note: The individual pages for each indicator are identified on the tabs as "R" for region; "F" for financial resources; "S" for enrollment size; and "C" for Carnegie classification.

INTRODUCTION

The Key Indicators Tool (KIT) was developed for the Council of Independent Colleges (CIC) by the Austen Group in 2004. This annual benchmarking report provides 20 indicators of institutional performance for small and mid-sized private not-for-profit colleges and universities. Part A covers student information (enrollment, recruitment, progression) and information related to the faculty. Part B covers a wide range of financial information, such as tuition revenue and financial aid, as well as resources and expenditures. The KIT benchmarking report is an important component of CIC's data initiatives, designed to enhance institutional effectiveness and decision making. This confidential resource is prepared for the exclusive use of CIC member presidents, who in turn may choose to share some or all of the report with key staff, board members, or other constituents. Originally developed with support from the William Randolph Hearst Foundations, CIC gratefully acknowledges Ruffalo Noel Levitz's continued financial support of CIC's benchmarking reports.

Data

The KIT uses data from the Integrated Postsecondary Education Data System (IPEDS), the major national source of publicly available information on postsecondary institutions provided by the U.S. Department of Education's National Center for Education Statistics. The KIT dataset contains information on nearly 750 four-year, private not-for-profit colleges and universities belonging to five 2018 Basic Carnegie Classification categories that represent 83 percent of CIC's membership: Baccalaureate Colleges—Diverse Fields, Baccalaureate Colleges—Arts & Sciences, Master's Colleges and Universities (smaller programs), Master's Colleges and Universities (medium programs), and Master's Colleges and Universities (larger programs). The number of institutions included in each chart and table varies somewhat because only institutions with complete data for all years of the comparison are included in each table and chart.

Data from IPEDS were not altered nor were missing values imputed unless corrected information was provided to CIC directly from an institution. CIC member institutions with incomplete IPEDS data for the most recent year were given the opportunity to submit data prior to the 2020 KIT report's update. In situations where some data for an institution were unavailable, the tables that present the institution's data contain blank cells and the data were not plotted on that indicator's charts.

Format and Analyses

The KIT provides an individually customized report for each institution with regional and national comparisons over a five-year period based on four sorting criteria: region, financial resources, enrollment size, and 2018 Basic Carnegie Classification. Four pages or worksheets are devoted to each of the 20 indicators, one page for each sorting criterion. Each page contains two charts: a national comparison and a regional comparison.

Individually Customized. A customized KIT has been prepared for each CIC member college and university. Each institution's unique data are plotted against national and regional backdrops. On pages presenting comparisons by financial resources, enrollment size, and Carnegie classification, a box in the upper right corner indicates the institution's corresponding category.

Five-Year Trends. To understand how an institution has performed over time and to indicate the direction of a trend, the charts cover five-year periods. Indicators 1-11 cover academic year 2014-2015 through academic year 2018-2019. Indicators 12-20 cover academic year 2013-2014 through academic year 2017-2018. In every case, the most recent IPEDS data are used. When data are presented as whole numbers, a five-year percentage change is calculated.

Medians versus Means. The KIT uses national and regional median values (identical to the 50th percentile). The advantage of using median values instead of the mean (average) is that the median is less influenced by high or low extremes, thus providing a more meaningful mid-point for comparative purposes.

Four Sorting Criteria. The 20 indicators are presented according to four criteria: region of the country, financial resources, enrollment size, and 2018 Basic Carnegie Classification. The individual pages for each indicator are identified on the Excel tabs as "R" for region; "F" for financial resources; "S" for enrollment size; and "C" for Carnegie classification.

1. **Region:** Each institution is located in one of the six regional categories as outlined below. These regions were selected to reflect the distribution and affinity of CIC member institutions and are not identical to those assigned in IPEDS.

Region	State
Far West	Alaska, California, Hawaii, Nevada, Oregon, Washington
Mid East	Delaware, District of Columbia, Maryland, New Jersey, New York, Pennsylvania
Midwest	Illinois, Indiana, Iowa, Michigan, Minnesota, Missouri, Ohio, Wisconsin
New England	Connecticut, Maine, Massachusetts, New Hampshire, Rhode Island, Vermont
Southeast	Alabama, Arkansas, Florida, Georgia, Kentucky, Louisiana, Mississippi, North Carolina, South Carolina, Tennessee, Virginia, West Virginia
West	Arizona, Colorado, Idaho, Kansas, Montana, Nebraska, New Mexico, North Dakota, Oklahoma, South Dakota, Texas, Utah, Wyoming

2. **Financial Resource Quartile:** Each institution was placed in one of four quartiles based on an institution's financial resources. The financial resource measure was calculated by converting two equally weighted indicators: *Net Tuition Revenue per Student* (No. 15) and *Endowment Assets per Student* (No. 18). An average of the three most recent years for this calculation is used to create a percentile rank of all institutions in the dataset. Each institution was then assigned to a national and regional quartile based on the distribution of the KIT dataset for the most recent year.

3. **Enrollment Size:** Institution size uses four enrollment categories: (1) fewer than 1,000 students; (2) 1,000 to 2,000 students; (3) 2,001 to 3,000 students; and (4) greater than 3,000 students. The most recent year's total 12-month full-time equivalent (FTE) enrollment was used to determine size. The total 12-month FTE enrollment was calculated by IPEDS as the sum of the FTE undergraduate, graduate, and first-professional student enrollment.

4. **2018 Basic Carnegie Classification:** The KIT provides comparisons based upon the following five basic Carnegie classifications established in 2005 and revised in 2018: Baccalaureate Colleges–Diverse Fields, Baccalaureate Colleges–Arts & Sciences, Master's Colleges and Universities (smaller programs), Master's Colleges and Universities (medium programs), and Master's Colleges and Universities (larger programs). The classification groups comprise 83 percent of CIC's membership. For additional information about the 2018 Basic Carnegie Classifications, including definitions of various categories, visit:

<http://carnegieclassifications.iu.edu/>

The Council of Independent Colleges

The Council of Independent Colleges (CIC) is an association of more than 774 nonprofit independent colleges and universities and higher education affiliates and organizations that has worked since 1956 to support college and university leadership, advance institutional excellence, and enhance public understanding of private higher education's contributions to society. CIC is the major national organization that focuses on providing services to leaders of independent colleges and universities as well as conferences, seminars, and other programs that help institutions improve educational quality, administrative and financial performance, and institutional visibility. CIC conducts the largest annual conferences of college and university presidents and of chief academic officers. CIC also provides support to state associations that organize programs and generate contributions for private colleges and universities. The Council is headquartered at One Dupont Circle in Washington, DC.

For questions or comments about CIC's benchmarking services, including the Financial Indicators Tool (FIT), please contact Lesley McBain, director of research projects, by phone at (202) 466-7230 or by email at:

lmcbain@cic.nche.edu

Additional information may also be found by visiting CIC on the web at:

www.cic.edu

Ruffalo Noel Levitz

Ruffalo Noel Levitz (RNL) is the leading provider of higher education enrollment, student success, and fundraising solutions. The firm serves more than 1,900 colleges and universities through data-driven solutions focused on the entire lifecycle of enrollment and fundraising, assuring students find the right program, graduate on time, secure their first job in their chosen field, and give back to support the next generation. With a deep knowledge of the industry, RNL provides institutions the ability to scale their efforts by tapping into a community of support and resources. To learn more, visit:

www.RuffaloNL.com
blogEM.RuffaloNL.com

CIC BENCHMARKING SERVICES

CIC is pleased to offer the following benchmarking services to enhance the Key Indicators Tool (KIT).

Comparison Group KIT

Fee: \$500

This service provides CIC members a customized KIT report with the 25th, 50th, and 75th percentiles for each indicator for either one or two comparison groups selected by the institution. Customized groups permit more refined comparisons that may be useful for particular strategic objectives. Comparison groups may range in size from five to 25, though groups of 10 to 15 are recommended. Selecting two groups provides for multiple comparisons, perhaps of a peer and an aspirant group (see “Guidelines for Selecting Comparison Groups” available on the CIC website). Comparison institutions may be selected from among private, not-for-profit, four-year colleges or universities in the United States.

Online Consultations

Fee: \$650 (KIT only)

Fee: \$950 (KIT and FIT)

CIC has arranged with Mike Williams, president of the Austen Group, to provide web-based consultations using an institution’s KIT report with senior staff, boards, or faculty groups. The interactive online session employs voice and shared graphics, allowing participants to engage in substantive conversation about the institution's concerns and goals in light of the KIT data. This service provides a cost-effective approach to enhancing the value of the KIT for your institution. It also is possible to extend what is generally a one-hour consultation to 90 minutes to include the companion Financial Indicators Tool (FIT) in the presentation. The fee for a consultation using both the KIT and the FIT is \$950. Consultations should be scheduled at least four weeks in advance.

For additional information or to request any of these benchmarking services, please visit:

www.cic.edu/BenchmarkingServices

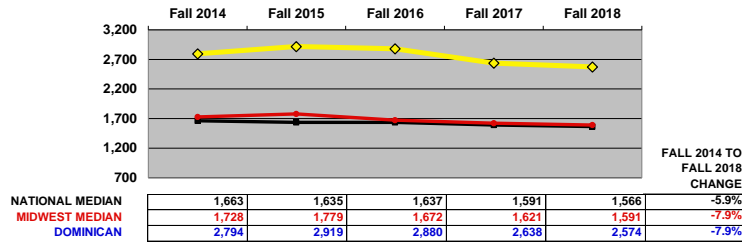
Or contact Lesley McBain, CIC’s director of research projects, by phone at (202) 466-7230 or by email:

lmcbain@cic.nche.edu

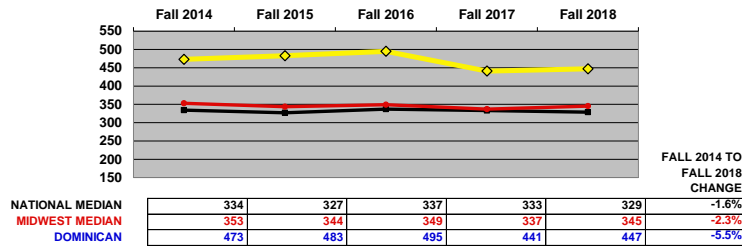
Dominican University

KIT TRENDS: STUDENTS

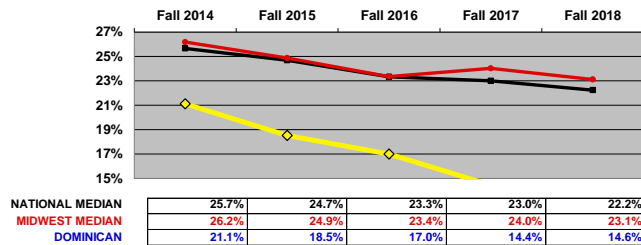
1) TOTAL FALL ENROLLMENT (FALL FTE)



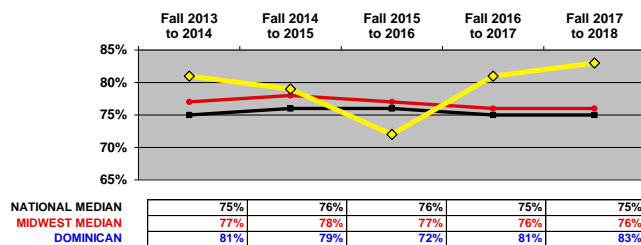
2) FIRST-YEAR ENROLLMENT (FULL-TIME UNDERGRADUATE)



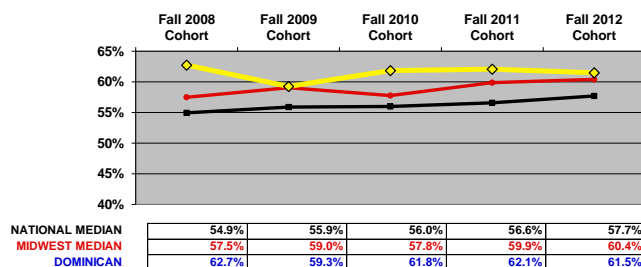
3) ADMISSIONS YIELD RATE (%) (ADMITTED TO ENROLLED)



4) RETENTION RATE (%) (FIRST TO SECOND YEAR)



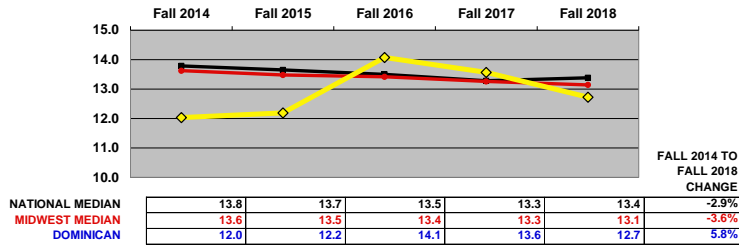
5) GRADUATION RATE (%) (SIX-YEAR COHORT RATE)



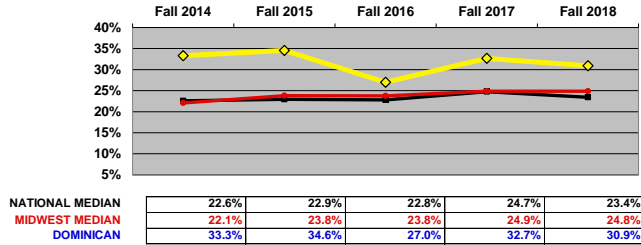
Dominican University

KIT TRENDS: FACULTY

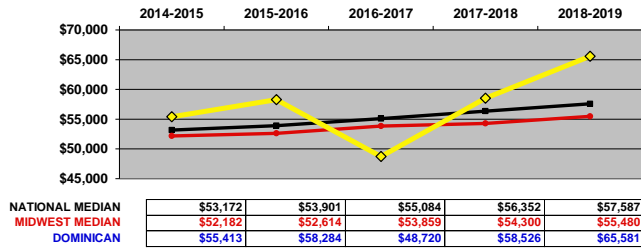
6) STUDENT/FACULTY RATIO



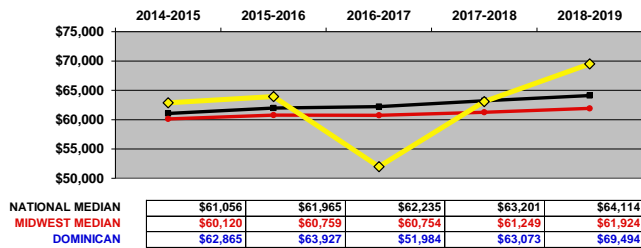
7) PART-TIME FACULTY (%)



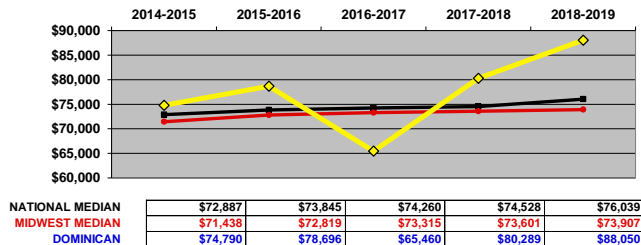
8) ASSISTANT PROFESSOR AVERAGE SALARY (\$) (EQUATED TO A 9-MONTH CONTRACT)



9) ASSOCIATE PROFESSOR AVERAGE SALARY (\$) (EQUATED TO A 9-MONTH CONTRACT)



10) PROFESSOR AVERAGE SALARY (\$) (EQUATED TO A 9-MONTH CONTRACT)

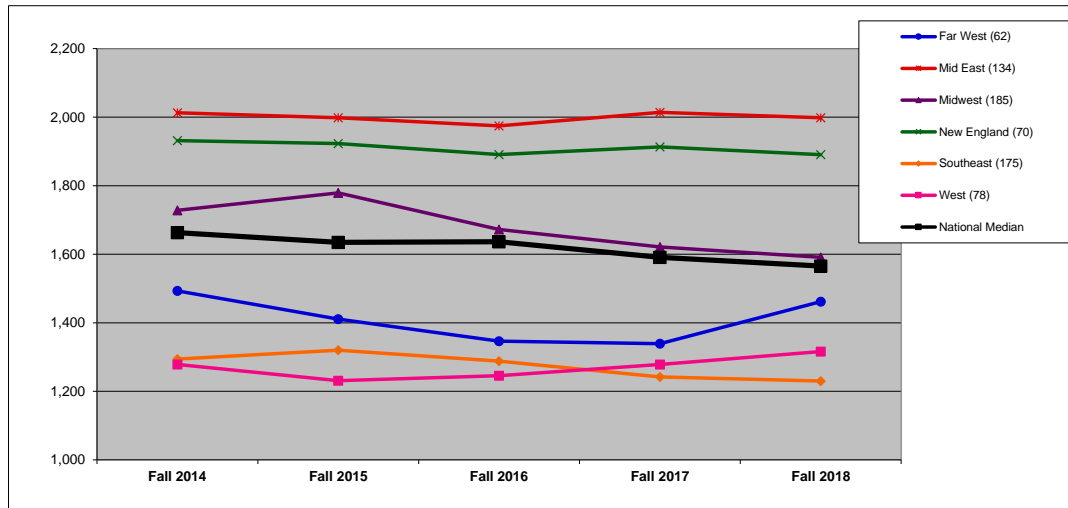


TOTAL FALL ENROLLMENT: BY REGION (1R)

DEFINITION: Total fall full-time equivalent (FTE) enrollment, including undergraduate, graduate, and first-professional students.

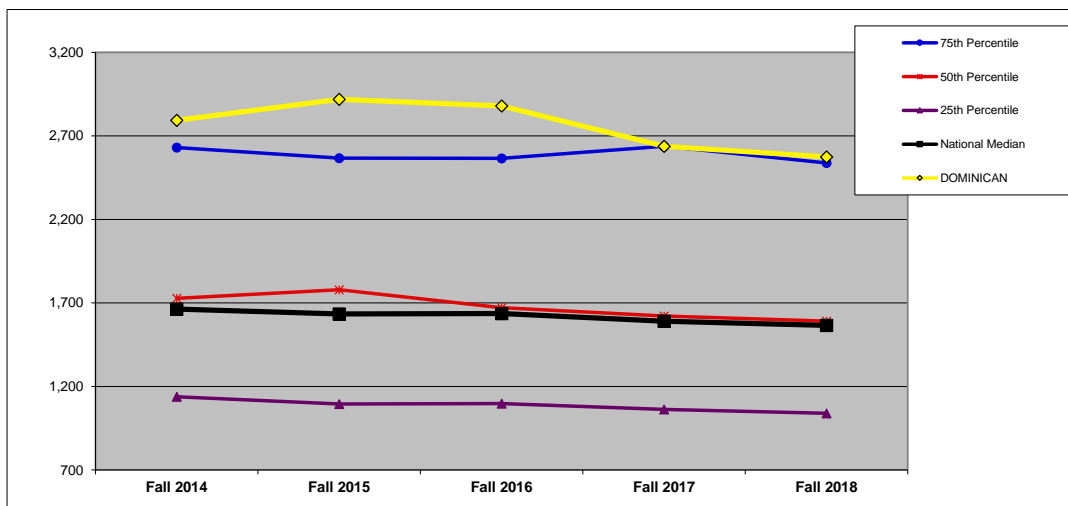
	Fall 2014	Fall 2015	Fall 2016	Fall 2017	Fall 2018	Y1 to Y5 Change
DOMINICAN	2,794	2,919	2,880	2,638	2,574	-7.9%

NATIONAL (n=704). All data on this chart are presented as medians. See Introduction for description of regions.



	Fall 2014	Fall 2015	Fall 2016	Fall 2017	Fall 2018	Y1 to Y5 Change
Far West (62)	1,493	1,411	1,347	1,339	1,462	-2.1%
Mid East (134)	2,013	1,999	1,975	2,014	1,999	-0.7%
Midwest (185)	1,728	1,779	1,672	1,621	1,591	-7.9%
New England (70)	1,932	1,923	1,891	1,914	1,891	-2.1%
Southeast (175)	1,294	1,320	1,288	1,242	1,230	-4.9%
West (78)	1,279	1,231	1,246	1,279	1,316	2.9%
National Median	1,663	1,635	1,637	1,591	1,566	-5.9%

MIDWEST REGION (n=185). In addition to the median, which is the 50th percentile, this chart shows the 75th and 25th percentiles for the region.



	Fall 2014	Fall 2015	Fall 2016	Fall 2017	Fall 2018	Y1 to Y5 Change
75th Percentile	2,630	2,567	2,566	2,638	2,538	-3.5%
50th Percentile	1,728	1,779	1,672	1,621	1,591	-7.9%
25th Percentile	1,138	1,095	1,097	1,063	1,039	-8.7%
National Median	1,663	1,635	1,637	1,591	1,566	-5.9%
DOMINICAN	2,794	2,919	2,880	2,638	2,574	-7.9%

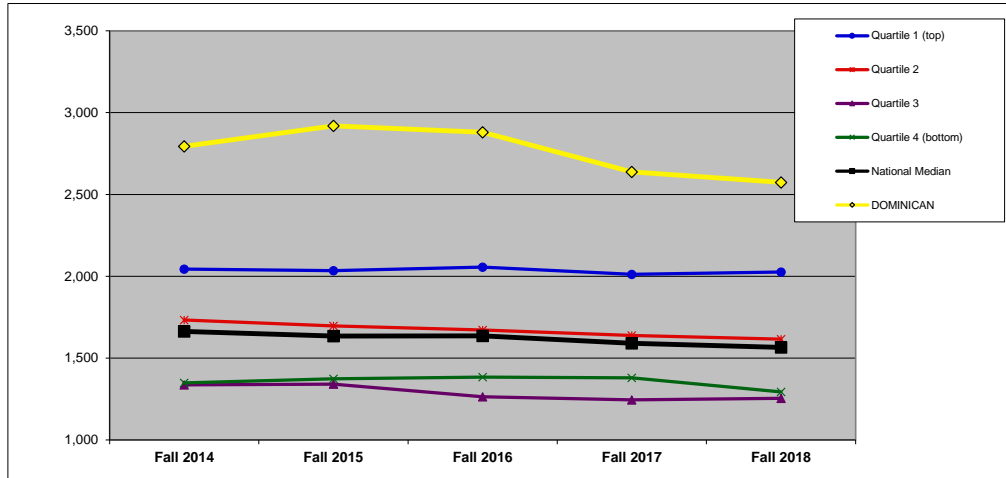
TOTAL FALL ENROLLMENT: BY FINANCIAL RESOURCES (1F)

DEFINITION: Total fall full-time equivalent (FTE) enrollment, including undergraduate, graduate, and first-professional students. (All national and regional data are presented as medians.)

	Fall 2014	Fall 2015	Fall 2016	Fall 2017	Fall 2018	Y1 to Y5 Change
DOMINICAN	2,794	2,919	2,880	2,638	2,574	-7.9%

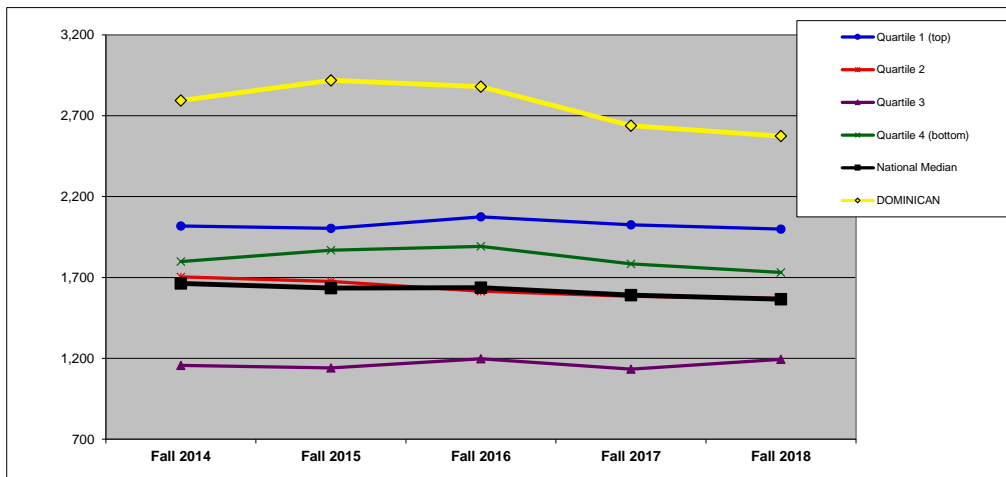
QUARTILES	
NATIONAL	2
REGIONAL	2

NATIONAL: FINANCIAL RESOURCES (n=696).



	Fall 2014	Fall 2015	Fall 2016	Fall 2017	Fall 2018	Y1 to Y5 Change
Quartile 1 (top)	2,044	2,034	2,056	2,012	2,026	-0.9%
Quartile 2	1,733	1,697	1,672	1,638	1,616	-6.8%
Quartile 3	1,337	1,341	1,264	1,245	1,254	-6.2%
Quartile 4 (bottom)	1,349	1,374	1,384	1,380	1,294	-4.1%
National Median	1,663	1,635	1,637	1,591	1,566	-5.9%
DOMINICAN	2,794	2,919	2,880	2,638	2,574	-7.9%

MIDWEST REGION: FINANCIAL RESOURCES (n=182).



	Fall 2014	Fall 2015	Fall 2016	Fall 2017	Fall 2018	Y1 to Y5 Change
Quartile 1 (top)	2,019	2,003	2,075	2,025	1,999	-1.0%
Quartile 2	1,704	1,676	1,616	1,583	1,571	-7.8%
Quartile 3	1,156	1,141	1,197	1,133	1,194	3.3%
Quartile 4 (bottom)	1,798	1,868	1,892	1,784	1,731	-3.7%
National Median	1,663	1,635	1,637	1,591	1,566	-5.9%
DOMINICAN	2,794	2,919	2,880	2,638	2,574	-7.9%

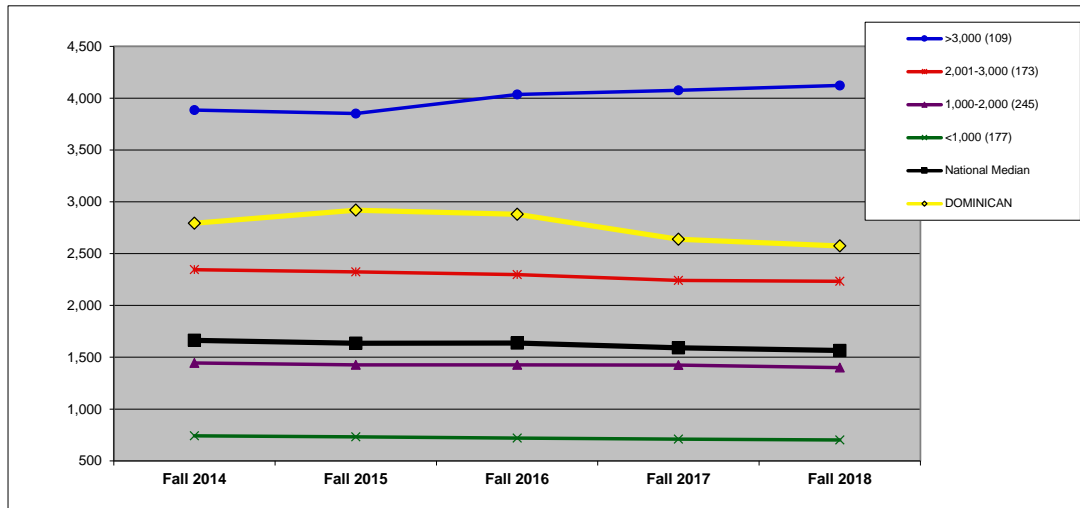
TOTAL FALL ENROLLMENT: BY ENROLLMENT SIZE (1S)

DEFINITION: Total fall full-time equivalent (FTE) enrollment, including undergraduate, graduate, and first-professional students. (All national and regional data are presented as medians.)

	Fall 2014	Fall 2015	Fall 2016	Fall 2017	Fall 2018	Y1 to Y5 Change
DOMINICAN	2,794	2,919	2,880	2,638	2,574	-7.9%

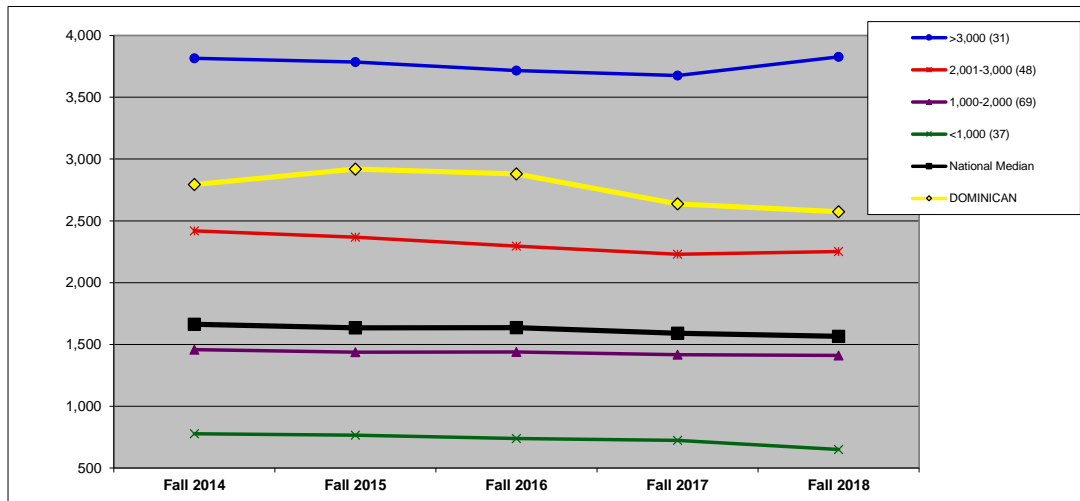
SIZE 2,001-3,000

NATIONAL: SIZE (n=704).



	Fall 2014	Fall 2015	Fall 2016	Fall 2017	Fall 2018	Y1 to Y5 Change
>3,000 (109)	3,886	3,852	4,035	4,075	4,123	6.1%
2,001-3,000 (173)	2,345	2,324	2,297	2,242	2,233	-4.8%
1,000-2,000 (245)	1,445	1,427	1,427	1,425	1,400	-3.1%
<1,000 (177)	742	732	720	711	702	-5.4%
National Median	1,663	1,635	1,637	1,591	1,566	-5.9%
DOMINICAN	2,794	2,919	2,880	2,638	2,574	-7.9%

MIDWEST REGION: SIZE (n=185).



	Fall 2014	Fall 2015	Fall 2016	Fall 2017	Fall 2018	Y1 to Y5 Change
>3,000 (31)	3,816	3,785	3,716	3,676	3,827	0.3%
2,001-3,000 (48)	2,419	2,368	2,296	2,230	2,252	-6.9%
1,000-2,000 (69)	1,458	1,437	1,439	1,417	1,411	-3.2%
<1,000 (37)	777	766	739	723	650	-16.3%
National Median	1,663	1,635	1,637	1,591	1,566	-5.9%
DOMINICAN	2,794	2,919	2,880	2,638	2,574	-7.9%

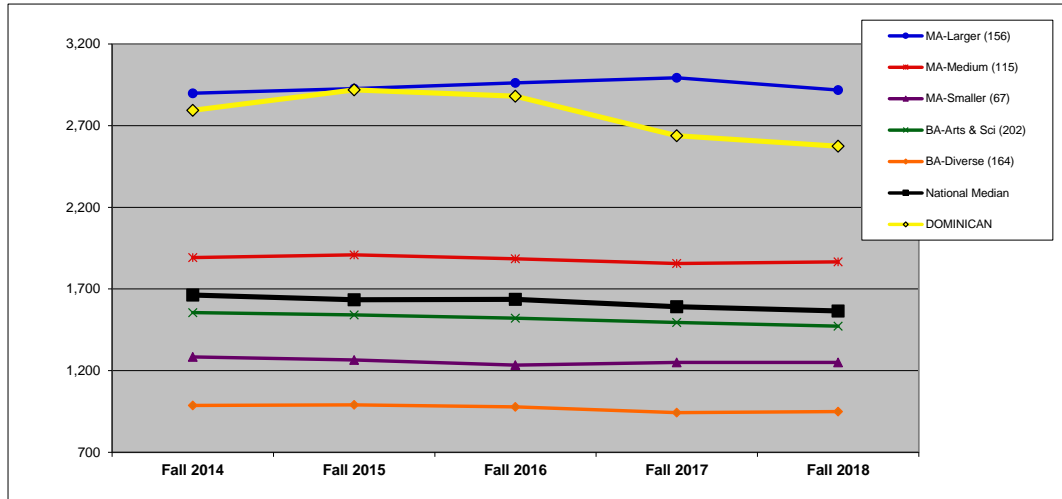
TOTAL FALL ENROLLMENT: BY CARNEGIE CLASSIFICATION (1C)

DEFINITION: Total fall full-time equivalent (FTE) enrollment, including undergraduate, graduate, and first-professional students. See Introduction for description of Carnegie classifications. (All national and regional data are presented as medians.)

	Fall 2014	Fall 2015	Fall 2016	Fall 2017	Fall 2018	Y1 to Y5 Change
DOMINICAN	2,794	2,919	2,880	2,638	2,574	-7.9%

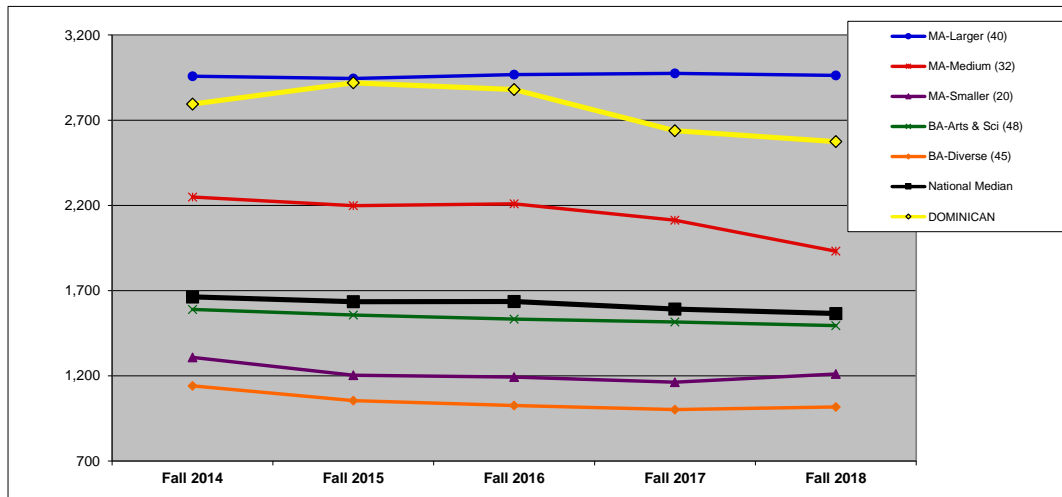
CARNEGIE MA-Larger

NATIONAL: CARNEGIE (n=704).



	Fall 2014	Fall 2015	Fall 2016	Fall 2017	Fall 2018	Y1 to Y5 Change
MA-Larger (156)	2,899	2,927	2,962	2,993	2,918	0.7%
MA-Medium (115)	1,893	1,909	1,885	1,856	1,866	-1.4%
MA-Smaller (67)	1,284	1,266	1,234	1,250	1,250	-2.6%
BA-Arts & Sci (202)	1,556	1,541	1,521	1,496	1,473	-5.3%
BA-Diverse (164)	988	991	978	943	950	-3.8%
National Median	1,663	1,635	1,637	1,591	1,566	-5.9%
DOMINICAN	2,794	2,919	2,880	2,638	2,574	-7.9%

MIDWEST REGION: CARNEGIE (n=185).



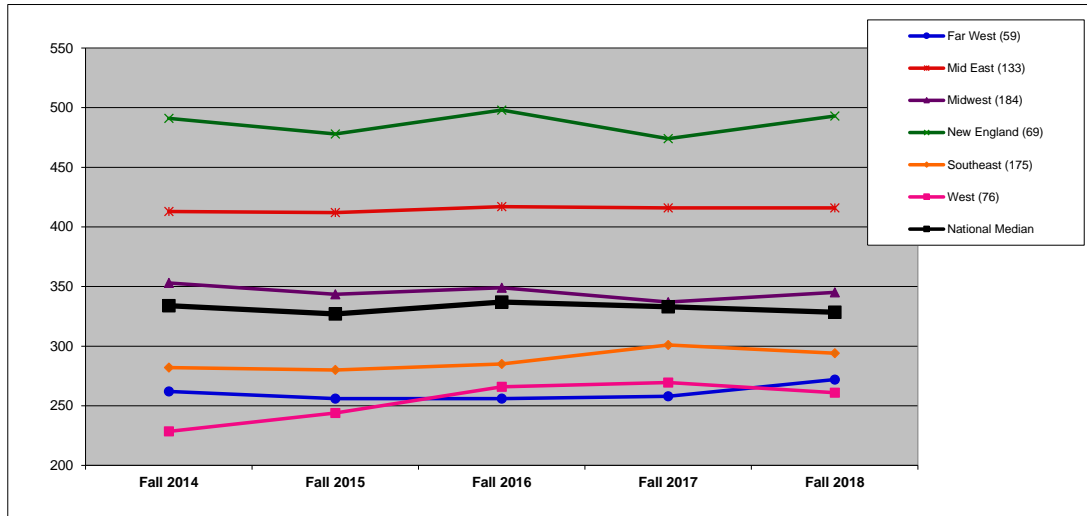
	Fall 2014	Fall 2015	Fall 2016	Fall 2017	Fall 2018	Y1 to Y5 Change
MA-Larger (40)	2,958	2,945	2,967	2,975	2,963	0.2%
MA-Medium (32)	2,249	2,199	2,209	2,113	1,931	-14.1%
MA-Smaller (20)	1,308	1,203	1,193	1,163	1,210	-7.5%
BA-Arts & Sci (48)	1,590	1,557	1,533	1,516	1,495	-6.0%
BA-Diverse (45)	1,141	1,054	1,026	1,002	1,017	-10.9%
National Median	1,663	1,635	1,637	1,591	1,566	-5.9%
DOMINICAN	2,794	2,919	2,880	2,638	2,574	-7.9%

FIRST-YEAR ENROLLMENT: BY REGION (2R)

DEFINITION: Total fall full-time, first-time degree-seeking undergraduate students.

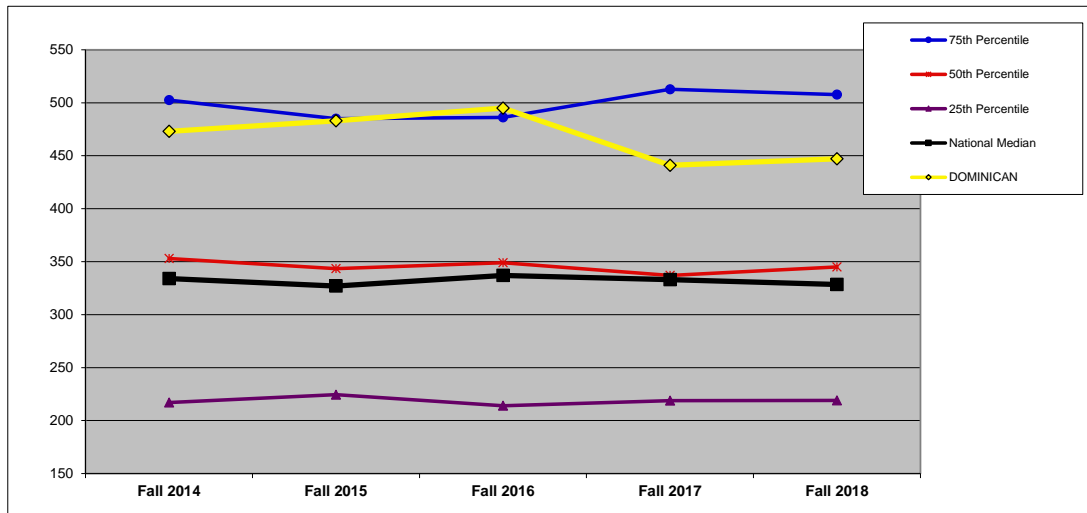
	Fall 2014	Fall 2015	Fall 2016	Fall 2017	Fall 2018	Y1 to Y5 Change
DOMINICAN	473	483	495	441	447	-5.5%

NATIONAL (n=696). All data on this chart are presented as medians. See Introduction for description of regions.



	Fall 2014	Fall 2015	Fall 2016	Fall 2017	Fall 2018	Y1 to Y5 Change
Far West (59)	262	256	256	258	272	3.8%
Mid East (133)	413	412	417	416	416	0.7%
Midwest (184)	353	344	349	337	345	-2.3%
New England (69)	491	478	498	474	493	0.4%
Southeast (175)	282	280	285	301	294	4.3%
West (76)	229	244	266	270	261	14.2%
National Median	334	327	337	333	329	-1.6%

MIDWEST REGION (n=184). In addition to the median, which is the 50th percentile, this chart shows the 75th and 25th percentiles for the region.



	Fall 2014	Fall 2015	Fall 2016	Fall 2017	Fall 2018	Y1 to Y5 Change
75th Percentile	503	485	486	513	508	1.0%
50th Percentile	353	344	349	337	345	-2.3%
25th Percentile	217	225	214	219	219	0.9%
National Median	334	327	337	333	329	-1.6%
DOMINICAN	473	483	495	441	447	-5.5%

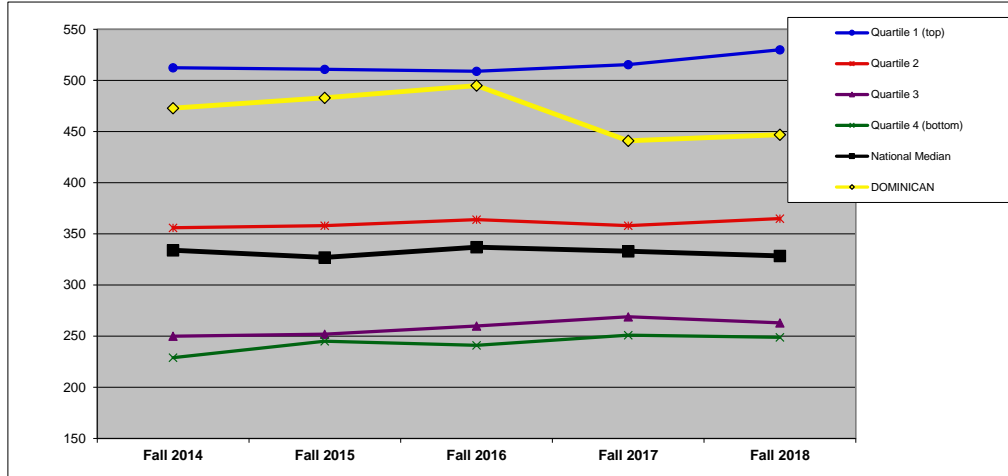
FIRST-YEAR ENROLLMENT: BY FINANCIAL RESOURCES (2F)

DEFINITION: Total fall full-time, first-time degree-seeking undergraduate students. (All national and regional data are presented as medians.)

	Fall 2014	Fall 2015	Fall 2016	Fall 2017	Fall 2018	Y1 to Y5 Change
DOMINICAN	473	483	495	441	447	-5.5%

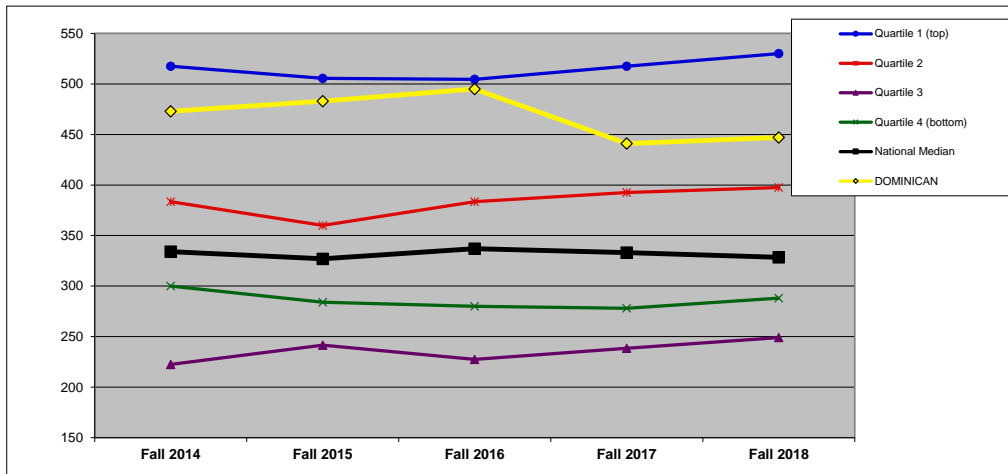
QUARTILES	
NATIONAL	2
REGIONAL	2

NATIONAL: FINANCIAL RESOURCES (n=690).



	Fall 2014	Fall 2015	Fall 2016	Fall 2017	Fall 2018	Y1 to Y5 Change
Quartile 1 (top)	513	511	509	516	530	3.4%
Quartile 2	356	358	364	358	365	2.5%
Quartile 3	250	252	260	269	263	5.2%
Quartile 4 (bottom)	229	245	241	251	249	8.7%
National Median	334	327	337	333	329	-1.6%
DOMINICAN	473	483	495	441	447	-5.5%

MIDWEST REGION: FINANCIAL RESOURCES (n=181).



	Fall 2014	Fall 2015	Fall 2016	Fall 2017	Fall 2018	Y1 to Y5 Change
Quartile 1 (top)	518	506	505	518	530	2.4%
Quartile 2	384	360	384	393	398	3.7%
Quartile 3	223	242	228	239	249	11.9%
Quartile 4 (bottom)	300	284	280	278	288	-4.0%
National Median	334	327	337	333	329	-1.6%
DOMINICAN	473	483	495	441	447	-5.5%

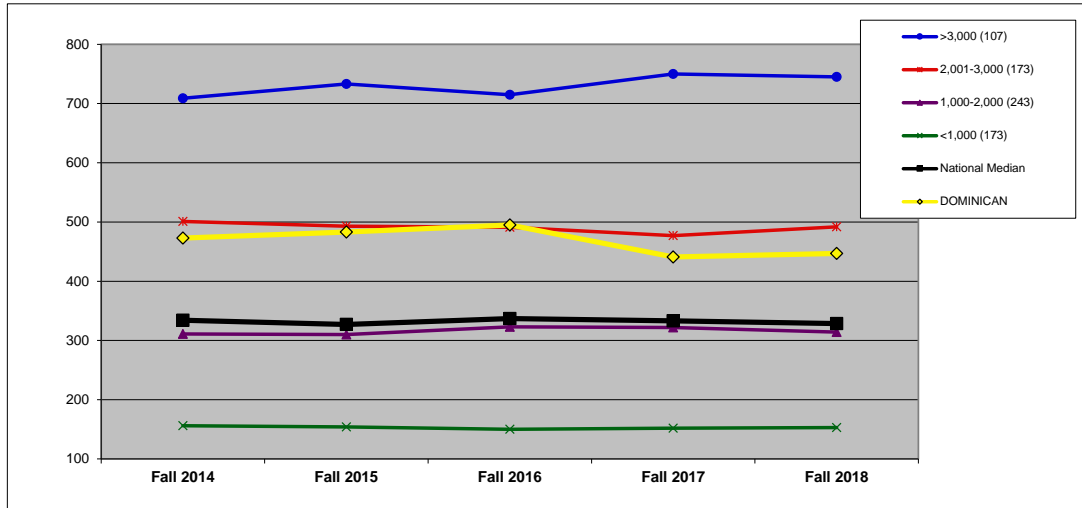
FIRST-YEAR ENROLLMENT: BY ENROLLMENT SIZE (2S)

DEFINITION: Total fall full-time, first-time degree-seeking undergraduate students. (All national and regional data are presented as medians.)

	Fall 2014	Fall 2015	Fall 2016	Fall 2017	Fall 2018	Y1 to Y5 Change
DOMINICAN	473	483	495	441	447	-5.5%

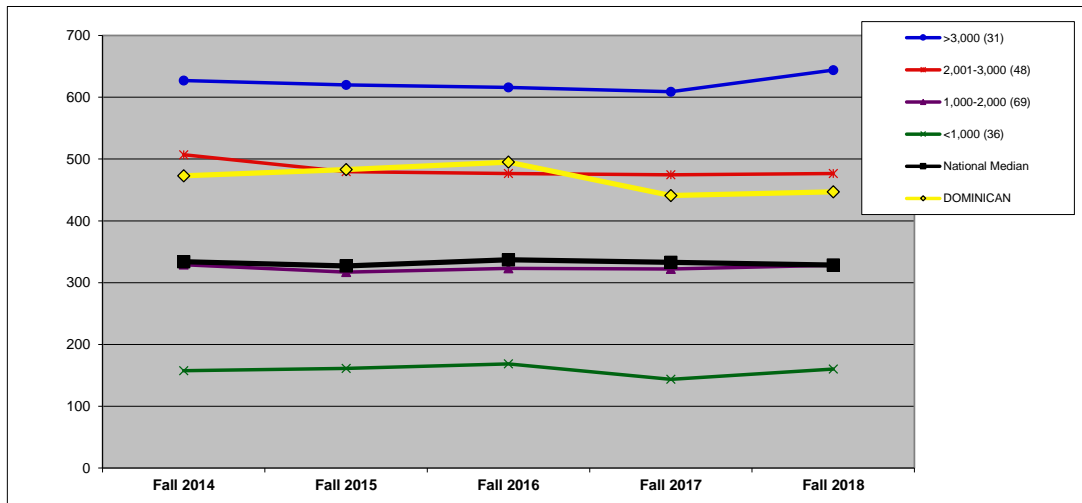
SIZE 2,001-3,000

NATIONAL: SIZE (n=696).



	Fall 2014	Fall 2015	Fall 2016	Fall 2017	Fall 2018	Y1 to Y5 Change
>3,000 (107)	709	733	715	750	745	5.1%
2,001-3,000 (173)	501	493	491	477	492	-1.8%
1,000-2,000 (243)	311	310	323	322	314	1.0%
<1,000 (173)	156	154	150	152	153	-1.9%
National Median	334	327	337	333	329	-1.6%
DOMINICAN	473	483	495	441	447	-5.5%

MIDWEST REGION: SIZE (n=184).



	Fall 2014	Fall 2015	Fall 2016	Fall 2017	Fall 2018	Y1 to Y5 Change
>3,000 (31)	627	620	616	609	644	2.7%
2,001-3,000 (48)	507	480	477	475	477	-6.0%
1,000-2,000 (69)	329	317	323	322	328	-0.3%
<1,000 (36)	158	161	169	144	160	1.6%
National Median	334	327	337	333	329	-1.6%
DOMINICAN	473	483	495	441	447	-5.5%

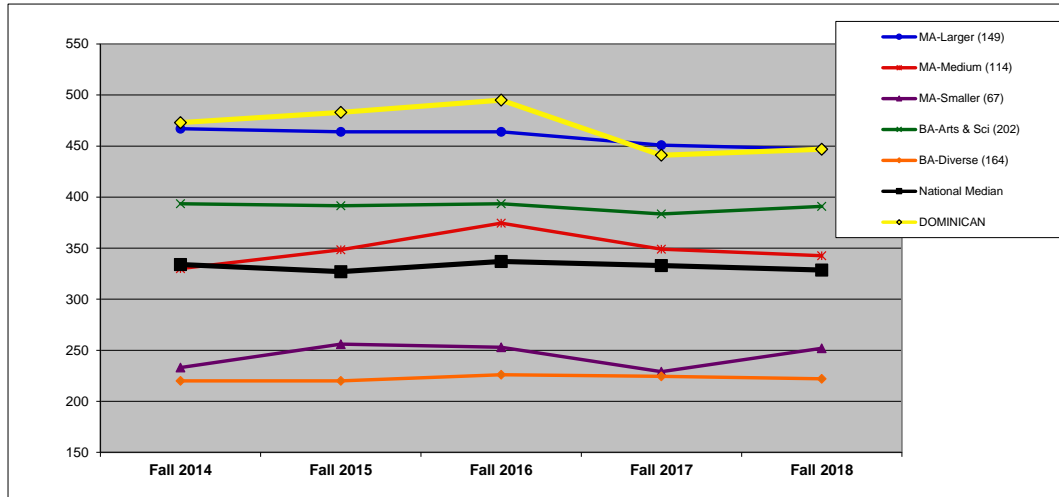
FIRST-YEAR ENROLLMENT: BY CARNEGIE CLASSIFICATION (2C)

DEFINITION: Total fall full-time, first-time degree-seeking undergraduate students. See Introduction for description of Carnegie classifications. (All national and regional data are presented as medians.)

	Fall 2014	Fall 2015	Fall 2016	Fall 2017	Fall 2018	Y1 to Y5 Change
DOMINICAN	473	483	495	441	447	-5.5%

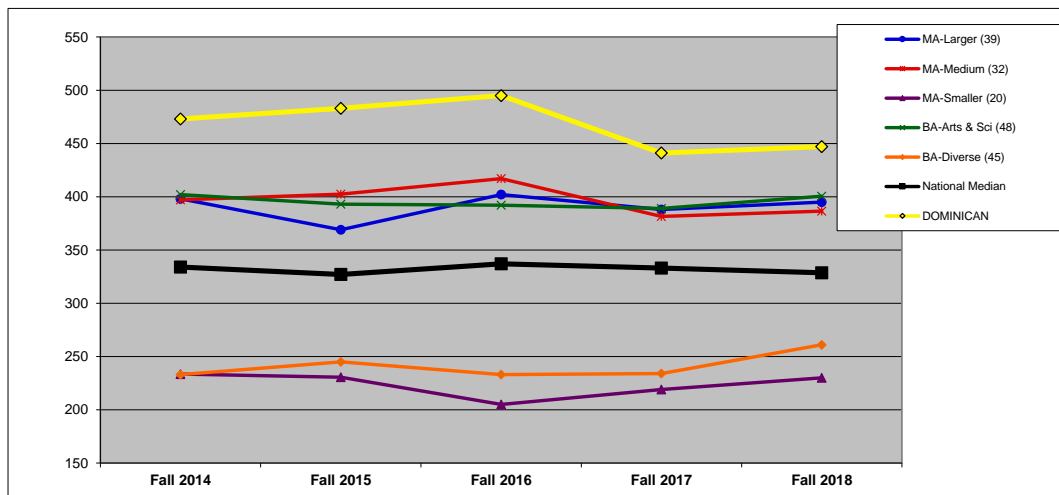
CARNEGIE MA-Larger

NATIONAL: CARNEGIE (n=696).



	Fall 2014	Fall 2015	Fall 2016	Fall 2017	Fall 2018	Y1 to Y5 Change
MA-Larger (149)	467	464	464	451	447	-4.3%
MA-Medium (114)	330	349	375	349	343	3.8%
MA-Smaller (67)	233	256	253	229	252	8.2%
BA-Arts & Sci (202)	394	392	394	384	391	-0.6%
BA-Diverse (164)	220	220	226	225	222	0.9%
National Median	334	327	337	333	329	-1.6%
DOMINICAN	473	483	495	441	447	-5.5%

MIDWEST REGION: CARNEGIE (n=184).



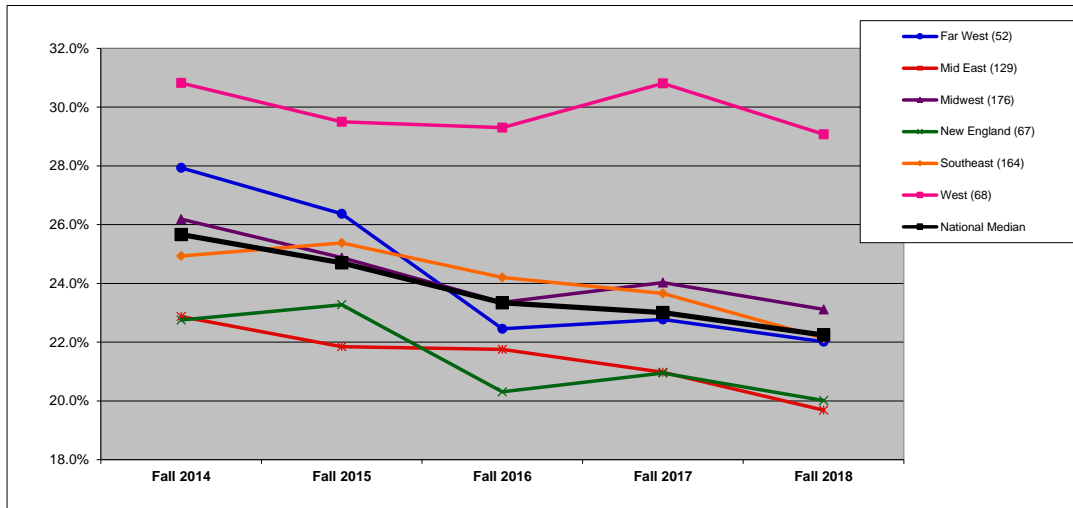
	Fall 2014	Fall 2015	Fall 2016	Fall 2017	Fall 2018	Y1 to Y5 Change
MA-Larger (39)	398	369	402	388	395	-0.8%
MA-Medium (32)	397	403	417	382	387	-2.6%
MA-Smaller (20)	234	231	205	219	230	-1.5%
BA-Arts & Sci (48)	402	393	392	389	401	-0.4%
BA-Diverse (45)	233	245	233	234	261	12.0%
National Median	334	327	337	333	329	-1.6%
DOMINICAN	473	483	495	441	447	-5.5%

ADMISSIONS YIELD RATE (%): BY REGION (3R)

DEFINITION: Percentage of admitted students who enrolled. (The year indicated is the year of the Institutional Characteristics IPEDS Survey. Institutions had the option of reporting data for the current or prior year. Only data from institutions reporting current year data for all five years were used in the comparisons.)

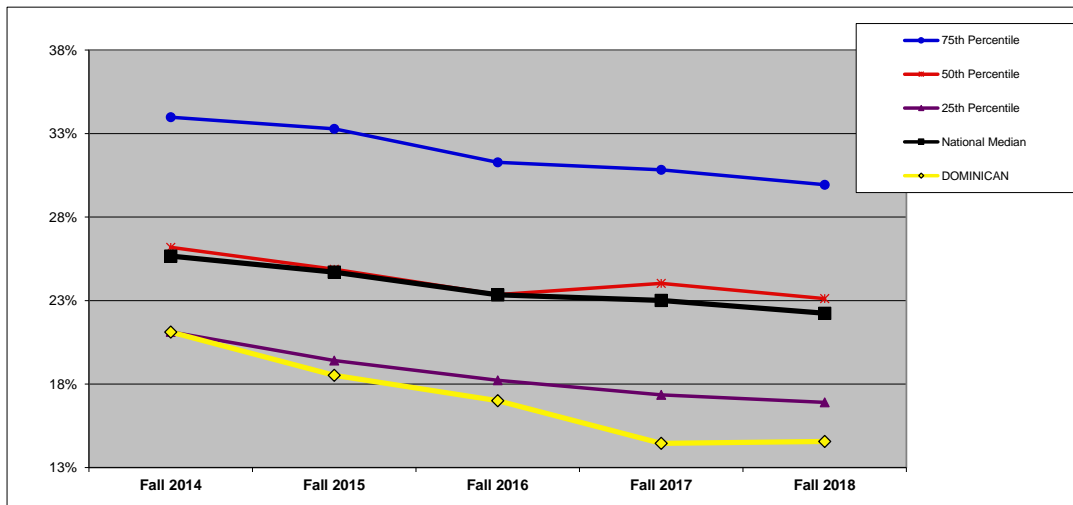
	Fall 2014	Fall 2015	Fall 2016	Fall 2017	Fall 2018
DOMINICAN	21.1%	18.5%	17.0%	14.4%	14.6%

NATIONAL (n=656). All data on this chart are presented as medians. See Introduction for description of regions.



	Fall 2014	Fall 2015	Fall 2016	Fall 2017	Fall 2018
Far West (52)	27.9%	26.4%	22.5%	22.8%	22.0%
Mid East (129)	22.9%	21.8%	21.8%	21.0%	19.7%
Midwest (176)	26.2%	24.9%	23.4%	24.0%	23.1%
New England (67)	22.8%	23.3%	20.3%	20.9%	20.0%
Southeast (164)	24.9%	25.4%	24.2%	23.7%	22.1%
West (68)	30.8%	29.5%	29.3%	30.8%	29.1%
National Median	25.7%	24.7%	23.3%	23.0%	22.2%

MIDWEST REGION (n=176). In addition to the median, which is the 50th percentile, this chart shows the 75th and 25th percentiles for the region.



	Fall 2014	Fall 2015	Fall 2016	Fall 2017	Fall 2018
75th Percentile	34.0%	33.3%	31.3%	30.8%	29.9%
50th Percentile	26.2%	24.9%	23.4%	24.0%	23.1%
25th Percentile	21.1%	19.4%	18.2%	17.4%	16.9%
National Median	25.7%	24.7%	23.3%	23.0%	22.2%
DOMINICAN	21.1%	18.5%	17.0%	14.4%	14.6%

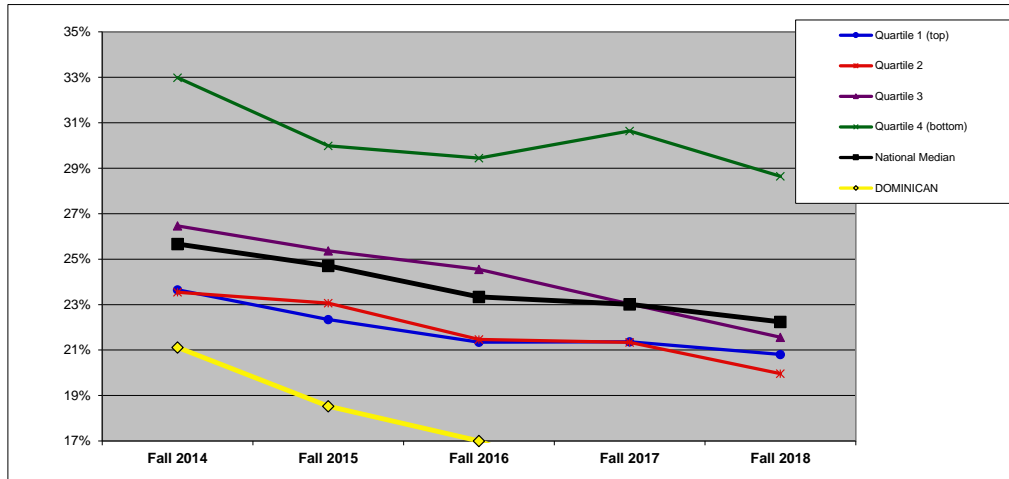
ADMISSIONS YIELD RATE (%): BY FINANCIAL RESOURCES (3F)

DEFINITION: Percentage of admitted students who enrolled. (The year indicated is the year of the Institutional Characteristics IPEDS Survey. Institutions had the option of reporting data for the current or prior year. Only data from institutions reporting current year data for all five years were used in the comparisons. All national and regional data are presented as medians.)

	Fall 2014	Fall 2015	Fall 2016	Fall 2017	Fall 2018
DOMINICAN	21.1%	18.5%	17.0%	14.4%	14.6%

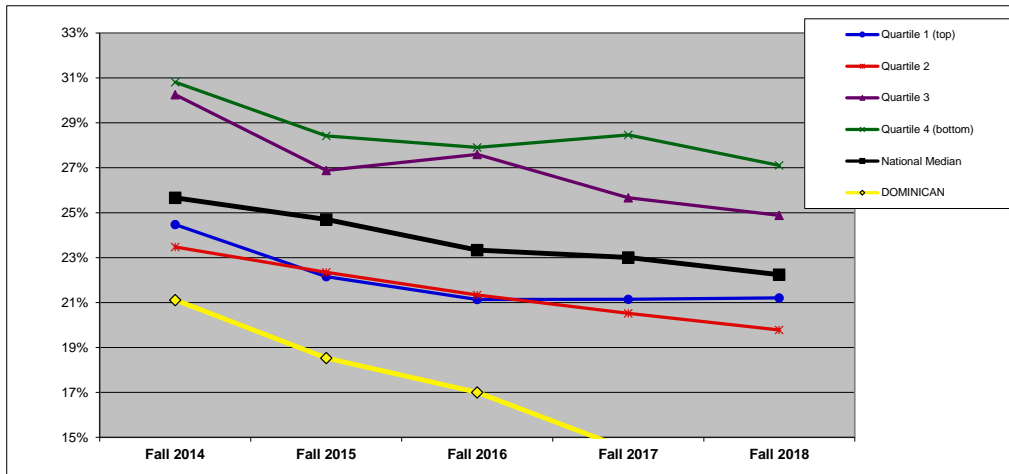
QUARTILES	
NATIONAL	2
REGIONAL	2

NATIONAL: FINANCIAL RESOURCES (n=654).



	Fall 2014	Fall 2015	Fall 2016	Fall 2017	Fall 2018
Quartile 1 (top)	23.7%	22.3%	21.3%	21.4%	20.8%
Quartile 2	23.5%	23.1%	21.5%	21.3%	20.0%
Quartile 3	26.5%	25.4%	24.5%	23.0%	21.6%
Quartile 4 (bottom)	33.0%	30.0%	29.4%	30.6%	28.6%
National Median	25.7%	24.7%	23.3%	23.0%	22.2%
DOMINICAN	21.1%	18.5%	17.0%	14.4%	14.6%

MIDWEST REGION: FINANCIAL RESOURCES (n=176).



	Fall 2014	Fall 2015	Fall 2016	Fall 2017	Fall 2018
Quartile 1 (top)	24.5%	22.2%	21.1%	21.1%	21.2%
Quartile 2	23.5%	22.3%	21.3%	20.5%	19.8%
Quartile 3	30.3%	26.9%	27.6%	25.7%	24.9%
Quartile 4 (bottom)	30.8%	28.4%	27.9%	28.5%	27.1%
National Median	25.7%	24.7%	23.3%	23.0%	22.2%
DOMINICAN	21.1%	18.5%	17.0%	14.4%	14.6%

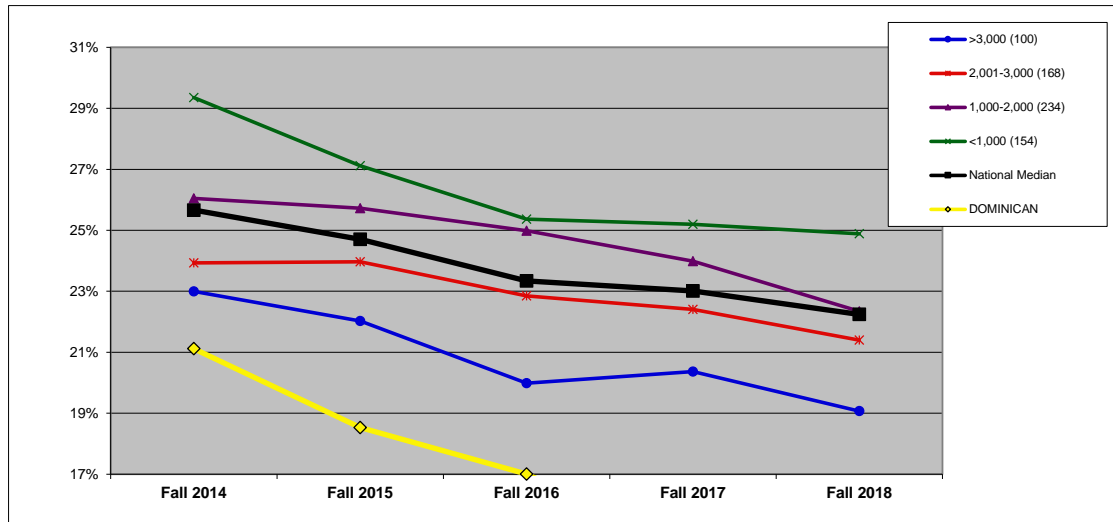
ADMISSIONS YIELD RATE (%): BY ENROLLMENT SIZE (3S)

DEFINITION: Percentage of admitted students who enrolled. (The year indicated is the year of the Institutional Characteristics IPEDS Survey. Institutions had the option of reporting data for the current or prior year. Only data from institutions reporting current year data for all five years were used in the comparisons. All national and regional data are presented as medians.)

	Fall 2014	Fall 2015	Fall 2016	Fall 2017	Fall 2018
DOMINICAN	21.1%	18.5%	17.0%	14.4%	14.6%

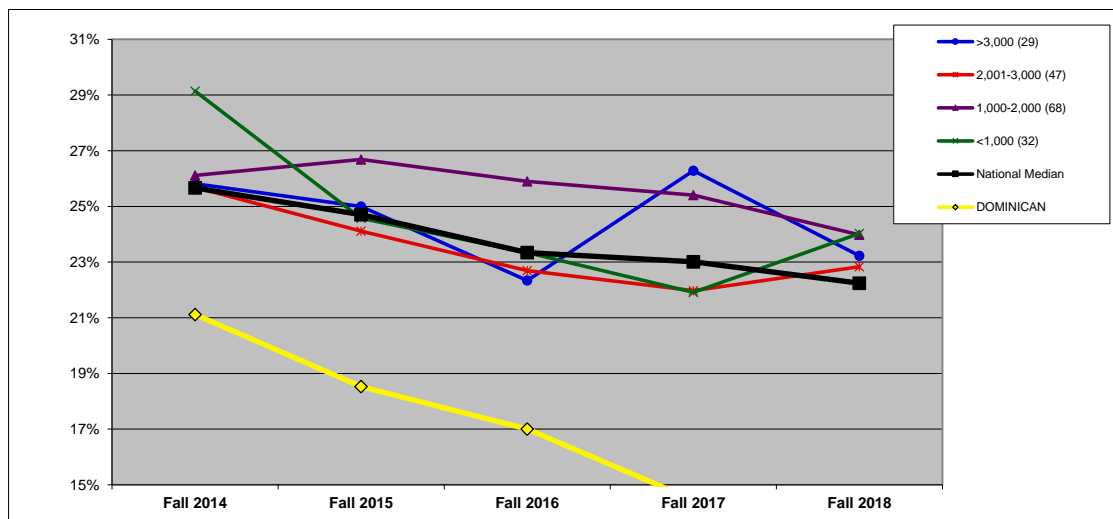
SIZE 2,001-3,000

NATIONAL: SIZE (n=656).



	Fall 2014	Fall 2015	Fall 2016	Fall 2017	Fall 2018
>3,000 (100)	23.0%	22.0%	20.0%	20.4%	19.1%
2,001-3,000 (168)	23.9%	24.0%	22.9%	22.4%	21.4%
1,000-2,000 (234)	26.0%	25.7%	25.0%	24.0%	22.3%
<1,000 (154)	29.4%	27.1%	25.4%	25.2%	24.9%
National Median	25.7%	24.7%	23.3%	23.0%	22.2%
DOMINICAN	21.1%	18.5%	17.0%	14.4%	14.6%

MIDWEST REGION: SIZE (n=176).



	Fall 2014	Fall 2015	Fall 2016	Fall 2017	Fall 2018
>3,000 (29)	25.8%	25.0%	22.3%	26.3%	23.2%
2,001-3,000 (47)	25.7%	24.1%	22.7%	22.0%	22.8%
1,000-2,000 (68)	26.1%	26.7%	25.9%	25.4%	24.0%
<1,000 (32)	29.1%	24.6%	23.3%	21.9%	24.0%
National Median	25.7%	24.7%	23.3%	23.0%	22.2%
DOMINICAN	21.1%	18.5%	17.0%	14.4%	14.6%

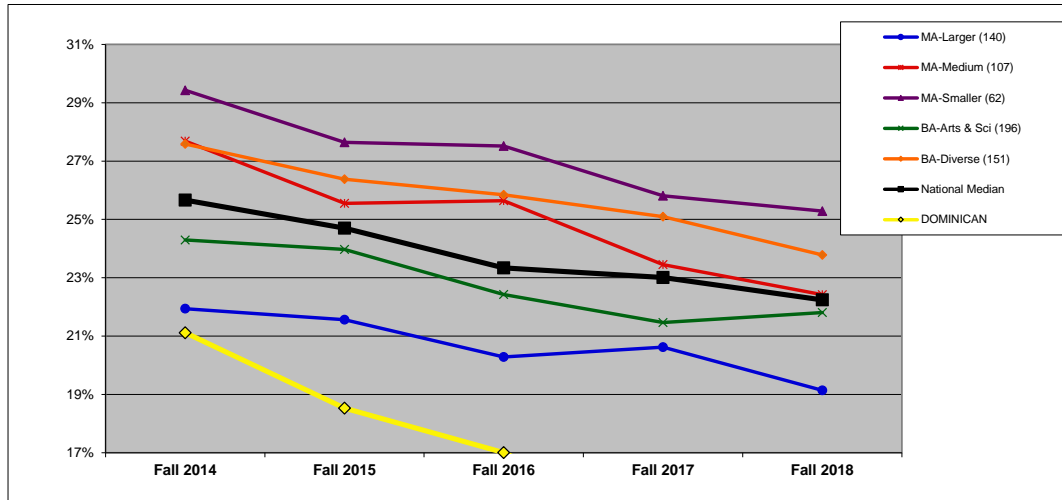
ADMISSIONS YIELD RATE (%): BY CARNEGIE CLASSIFICATION (3C)

DEFINITION: Percentage of admitted students who enrolled. See Introduction for description of Carnegie classifications. (The year indicated is the year of the Institutional Characteristics IPEDS Survey. Institutions had the option of reporting data for the current or prior year. Only data from institutions reporting current year data for all five years were used in the comparisons. All national and regional data are presented as medians.)

	Fall 2014	Fall 2015	Fall 2016	Fall 2017	Fall 2018
DOMINICAN	21.1%	18.5%	17.0%	14.4%	14.6%

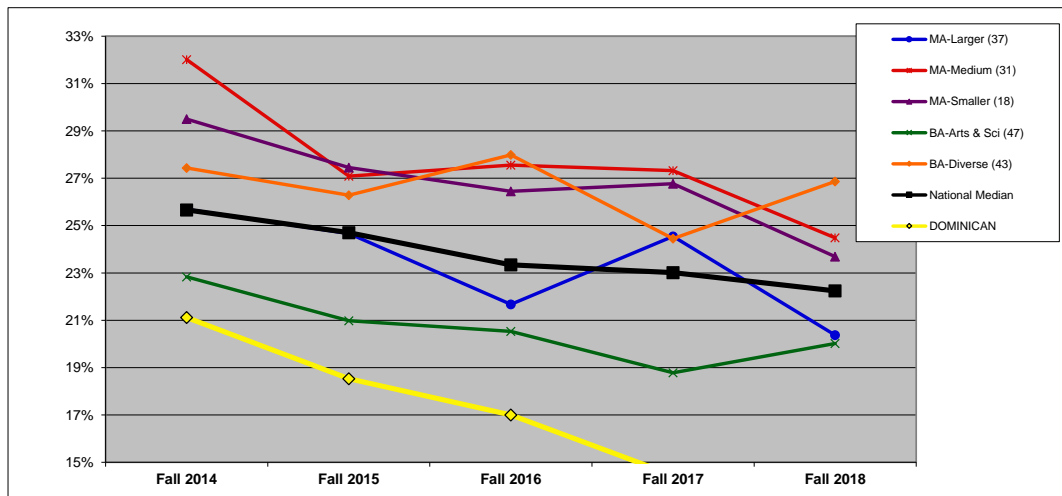
CARNEGIE MA-Larger

NATIONAL: CARNEGIE (n=656).



	Fall 2014	Fall 2015	Fall 2016	Fall 2017	Fall 2018
MA-Larger (140)	21.9%	21.6%	20.3%	20.6%	19.1%
MA-Medium (107)	27.7%	25.5%	25.6%	23.4%	22.4%
MA-Smaller (62)	29.4%	27.6%	27.5%	25.8%	25.3%
BA-Arts & Sci (196)	24.3%	24.0%	22.4%	21.5%	21.8%
BA-Diverse (151)	27.6%	26.4%	25.8%	25.1%	23.8%
National Median	25.7%	24.7%	23.3%	23.0%	22.2%
DOMINICAN	21.1%	18.5%	17.0%	14.4%	14.6%

MIDWEST REGION: CARNEGIE (n=176).



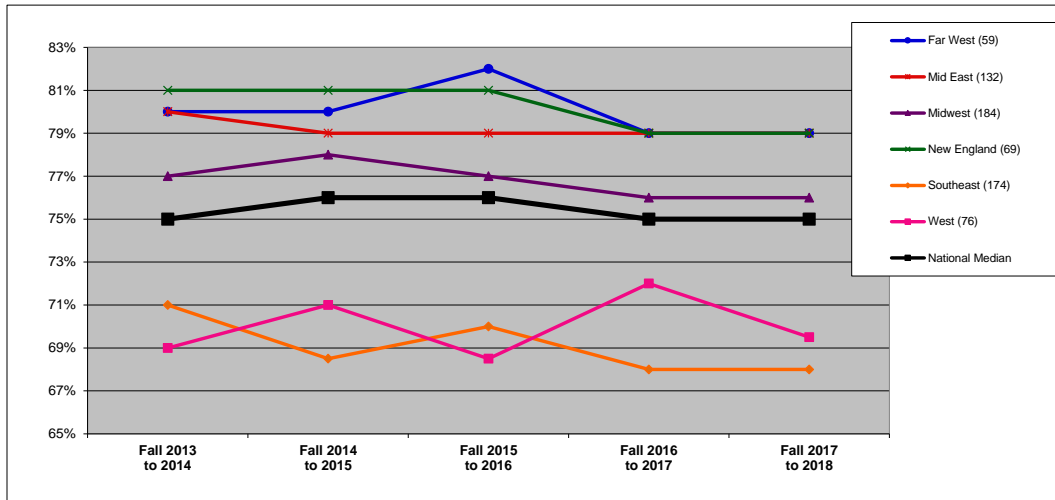
	Fall 2014	Fall 2015	Fall 2016	Fall 2017	Fall 2018
MA-Larger (37)	25.7%	24.7%	21.7%	24.5%	20.4%
MA-Medium (31)	32.0%	27.1%	27.6%	27.3%	24.5%
MA-Smaller (18)	29.5%	27.5%	26.5%	26.8%	23.7%
BA-Arts & Sci (47)	22.8%	21.0%	20.5%	18.8%	20.0%
BA-Diverse (43)	27.4%	26.3%	28.0%	24.4%	26.9%
National Median	25.7%	24.7%	23.3%	23.0%	22.2%
DOMINICAN	21.1%	18.5%	17.0%	14.4%	14.6%

RETENTION RATE (%): BY REGION (4R)

DEFINITION: The first to second year retention rate is the percentage of the fall full-time cohort (minus exclusions) that re-enrolled at the institution as either full- or part-time students in the fall of the next year.

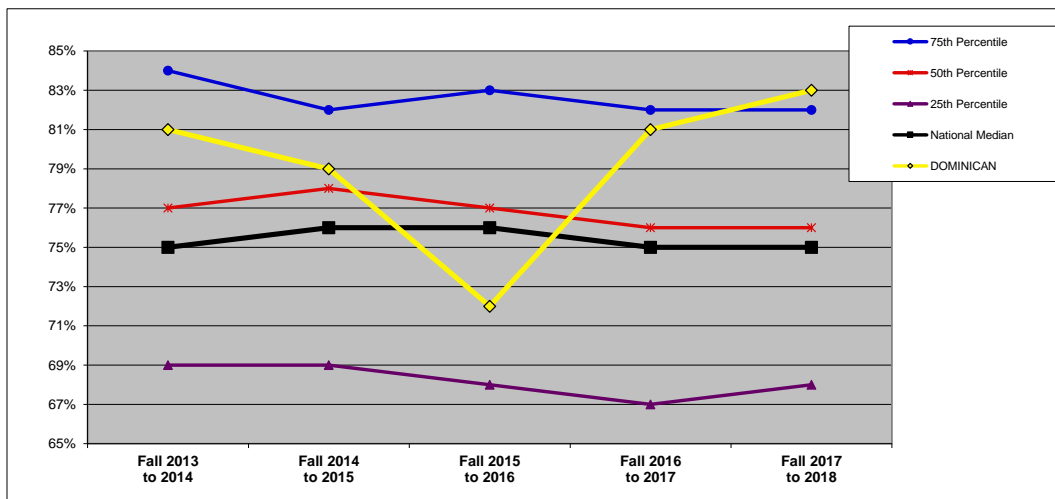
	Fall 2013 to 2014	Fall 2014 to 2015	Fall 2015 to 2016	Fall 2016 to 2017	Fall 2017 to 2018
DOMINICAN	81%	79%	72%	81%	83%

NATIONAL (n=694). All data on this chart are presented as medians. See Introduction for description of regions.



	Fall 2013 to 2014	Fall 2014 to 2015	Fall 2015 to 2016	Fall 2016 to 2017	Fall 2017 to 2018
Far West (59)	80%	80%	82%	79%	79%
Mid East (132)	80%	79%	79%	79%	79%
Midwest (184)	77%	78%	77%	76%	76%
New England (69)	81%	81%	81%	79%	79%
Southeast (174)	71%	69%	70%	68%	68%
West (76)	69%	71%	69%	72%	70%
National Median	75%	76%	76%	75%	75%

MIDWEST REGION (n=184). In addition to the median, which is the 50th percentile, this chart shows the 75th and 25th percentiles for the region.



	Fall 2013 to 2014	Fall 2014 to 2015	Fall 2015 to 2016	Fall 2016 to 2017	Fall 2017 to 2018
75th Percentile	84%	82%	83%	82%	82%
50th Percentile	77%	78%	77%	76%	76%
25th Percentile	69%	69%	68%	67%	68%
National Median	75%	76%	76%	75%	75%
DOMINICAN	81%	79%	72%	81%	83%

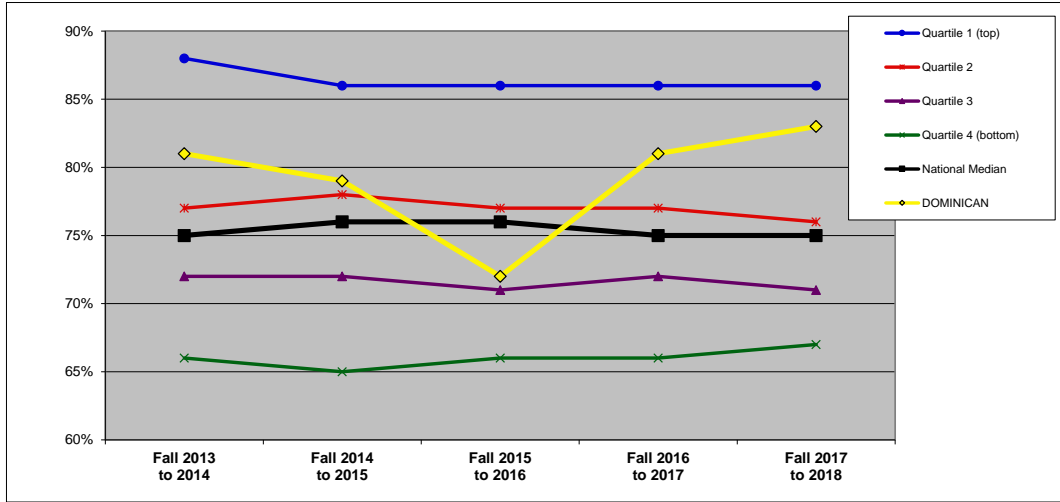
RETENTION RATE (%): BY FINANCIAL RESOURCES (4F)

DEFINITION: The first to second year retention rate is the percentage of the fall full-time cohort (minus exclusions) that re-enrolled at the institution as either full- or part-time students in the fall of the next year. (All national and regional data are presented as medians.)

	Fall 2013 to 2014	Fall 2014 to 2015	Fall 2015 to 2016	Fall 2016 to 2017	Fall 2017 to 2018
DOMINICAN	81%	79%	72%	81%	83%

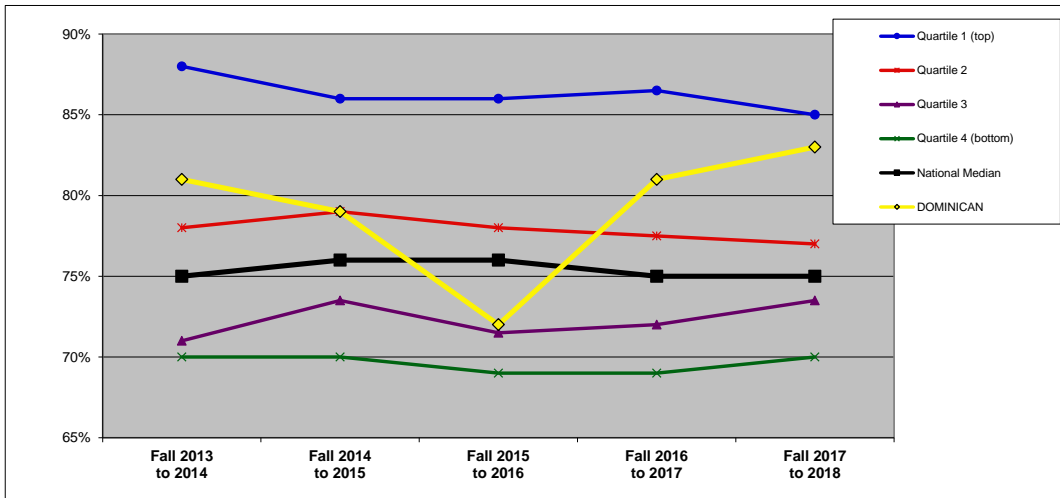
QUARTILES	
NATIONAL	2
REGIONAL	2

NATIONAL: FINANCIAL RESOURCES (n=688).



	Fall 2013 to 2014	Fall 2014 to 2015	Fall 2015 to 2016	Fall 2016 to 2017	Fall 2017 to 2018
Quartile 1 (top)	88%	86%	86%	86%	86%
Quartile 2	77%	78%	77%	77%	76%
Quartile 3	72%	72%	71%	72%	71%
Quartile 4 (bottom)	66%	65%	66%	66%	67%
National Median	75%	76%	76%	75%	75%
DOMINICAN	81%	79%	72%	81%	83%

MIDWEST REGION: FINANCIAL RESOURCES (n=181).



	Fall 2013 to 2014	Fall 2014 to 2015	Fall 2015 to 2016	Fall 2016 to 2017	Fall 2017 to 2018
Quartile 1 (top)	88%	86%	86%	87%	85%
Quartile 2	78%	79%	78%	78%	77%
Quartile 3	71%	74%	72%	72%	74%
Quartile 4 (bottom)	70%	70%	69%	69%	70%
National Median	75%	76%	76%	75%	75%
DOMINICAN	81%	79%	72%	81%	83%

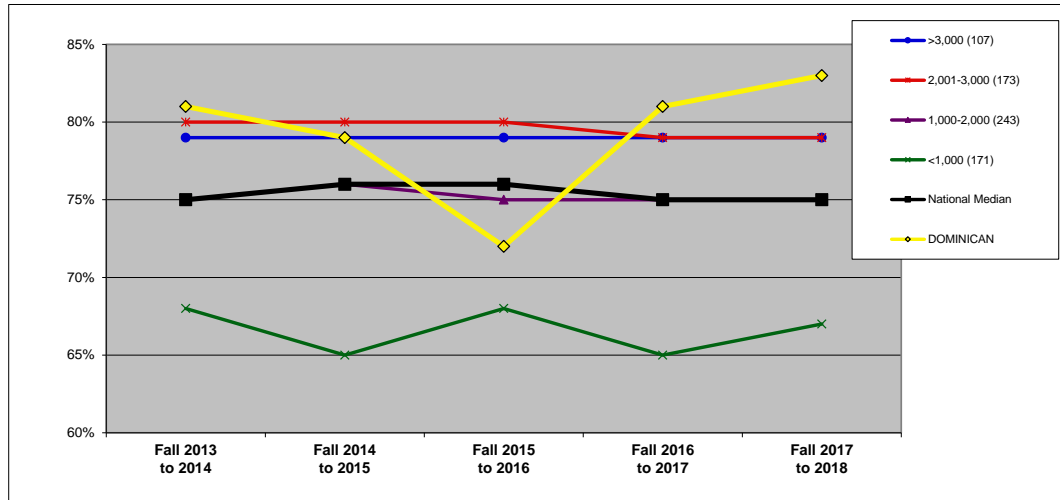
RETENTION RATE (%): BY ENROLLMENT SIZE (4S)

DEFINITION: The first to second year retention rate is the percentage of the fall full-time cohort (minus exclusions) that re-enrolled at the institution as either full- or part-time students in the fall of the next year. (All national and regional data are presented as medians.)

	Fall 2013 to 2014	Fall 2014 to 2015	Fall 2015 to 2016	Fall 2016 to 2017	Fall 2017 to 2018
DOMINICAN	81%	79%	72%	81%	83%

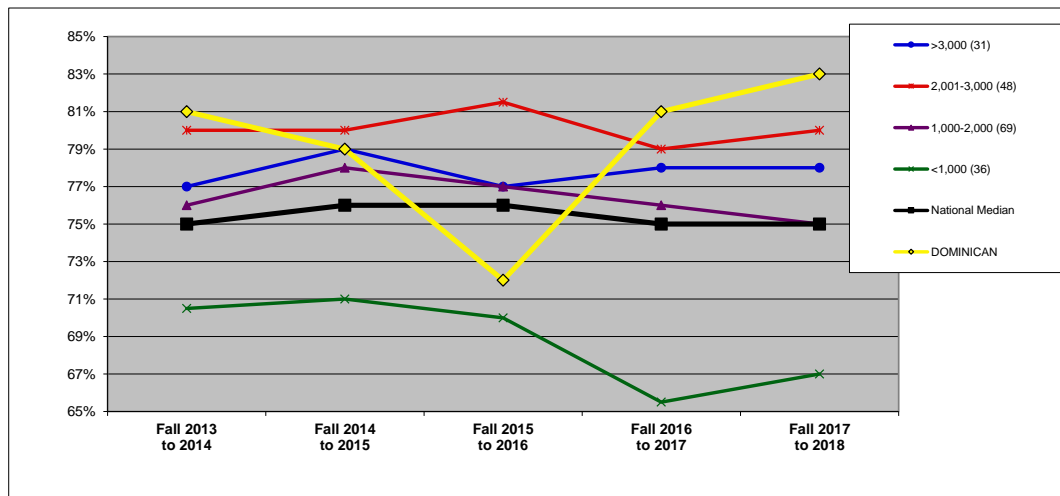
SIZE 2,001-3,000

NATIONAL: SIZE (n=694).



	Fall 2013 to 2014	Fall 2014 to 2015	Fall 2015 to 2016	Fall 2016 to 2017	Fall 2017 to 2018
>3,000 (107)	79%	79%	79%	79%	79%
2,001-3,000 (173)	80%	80%	80%	79%	79%
1,000-2,000 (243)	75%	76%	75%	75%	75%
<1,000 (171)	68%	65%	68%	65%	67%
National Median	75%	76%	76%	75%	75%
DOMINICAN	81%	79%	72%	81%	83%

MIDWEST REGION: SIZE (n=184).



	Fall 2013 to 2014	Fall 2014 to 2015	Fall 2015 to 2016	Fall 2016 to 2017	Fall 2017 to 2018
>3,000 (31)	77%	79%	77%	78%	78%
2,001-3,000 (48)	80%	80%	82%	79%	80%
1,000-2,000 (69)	76%	78%	77%	76%	75%
<1,000 (36)	71%	71%	70%	66%	67%
National Median	75%	76%	76%	75%	75%
DOMINICAN	81%	79%	72%	81%	83%

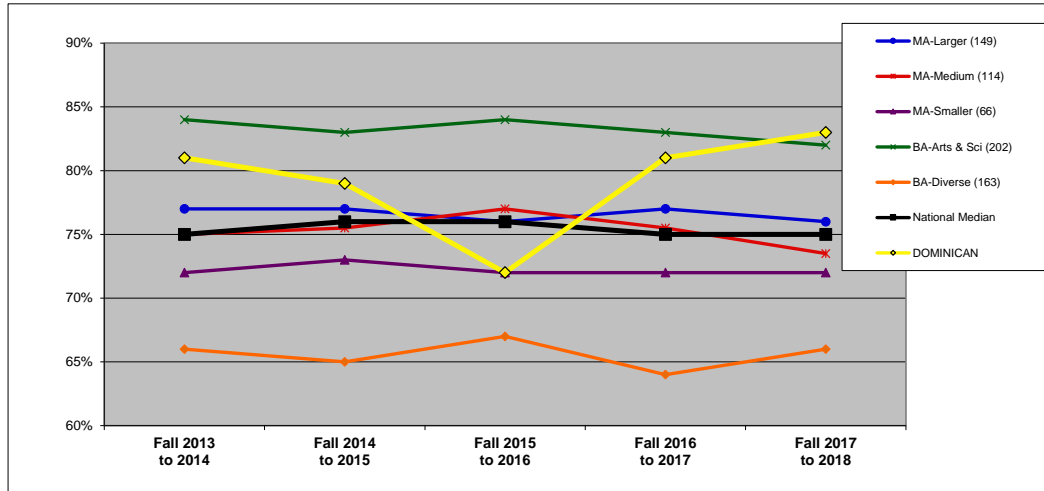
RETENTION RATE (%): BY CARNEGIE CLASSIFICATION (4C)

DEFINITION: The first to second year retention rate is the percentage of the fall full-time cohort (minus exclusions) that re-enrolled at the institution as either full- or part-time students in the fall of the next year. See Introduction for description of Carnegie classifications. (All national and regional data are presented as medians.)

	Fall 2013 to 2014	Fall 2014 to 2015	Fall 2015 to 2016	Fall 2016 to 2017	Fall 2017 to 2018
DOMINICAN	81%	79%	72%	81%	83%

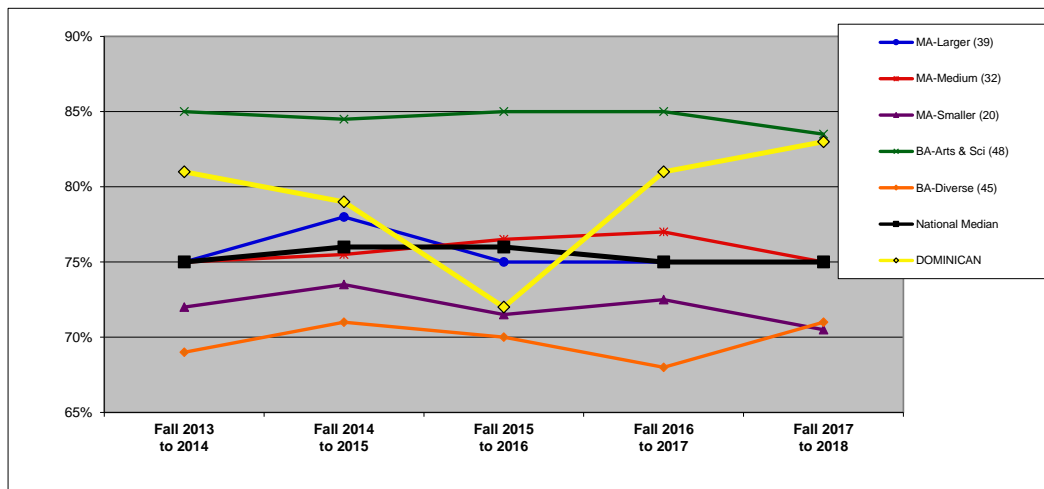
CARNEGIE MA-Larger

NATIONAL: CARNEGIE (n=694).



	Fall 2013 to 2014	Fall 2014 to 2015	Fall 2015 to 2016	Fall 2016 to 2017	Fall 2017 to 2018
MA-Larger (149)	77%	77%	76%	77%	76%
MA-Medium (114)	75%	76%	77%	76%	74%
MA-Smaller (66)	72%	73%	72%	72%	72%
BA-Arts & Sci (202)	84%	83%	84%	83%	82%
BA-Diverse (163)	66%	65%	67%	64%	66%
National Median	75%	76%	76%	75%	75%
DOMINICAN	81%	79%	72%	81%	83%

MIDWEST REGION: CARNEGIE (n=184).



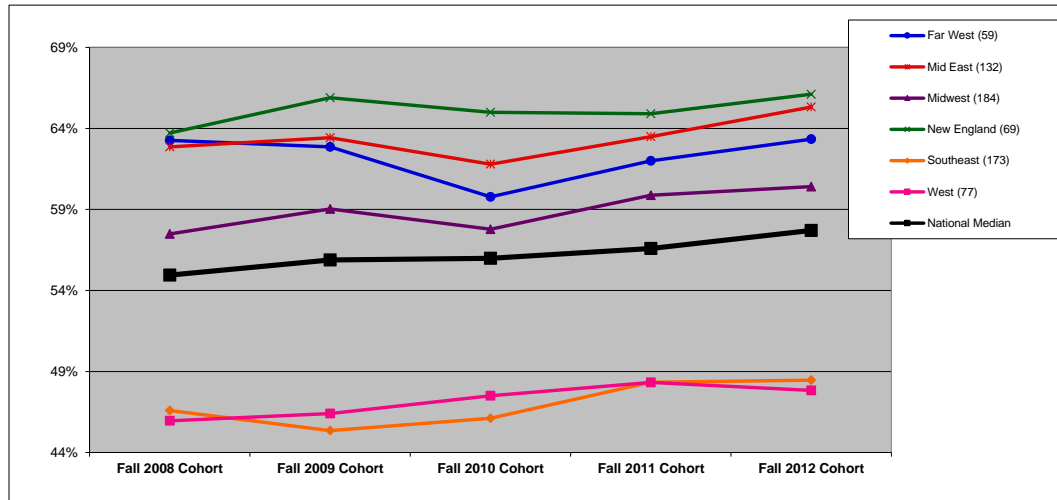
	Fall 2013 to 2014	Fall 2014 to 2015	Fall 2015 to 2016	Fall 2016 to 2017	Fall 2017 to 2018
MA-Larger (39)	75%	78%	75%	75%	75%
MA-Medium (32)	75%	76%	77%	77%	75%
MA-Smaller (20)	72%	74%	72%	73%	71%
BA-Arts & Sci (48)	85%	85%	85%	85%	84%
BA-Diverse (45)	69%	71%	70%	68%	71%
National Median	75%	76%	76%	75%	75%
DOMINICAN	81%	79%	72%	81%	83%

GRADUATION RATE (%): BY REGION (5R)

DEFINITION: The six-year, cohort graduation rate for full-time, first-time degree-seeking undergraduate students. For example, the Fall 2012 Cohort rate is the percentage that graduated by end of Summer 2018.

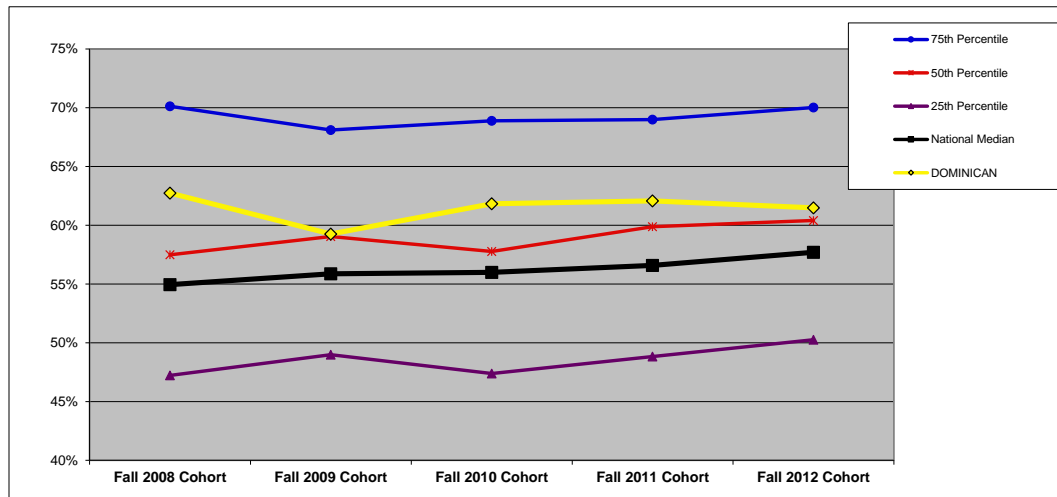
	Fall 2008 Cohort	Fall 2009 Cohort	Fall 2010 Cohort	Fall 2011 Cohort	Fall 2012 Cohort
DOMINICAN	62.7%	59.3%	61.8%	62.1%	61.5%

NATIONAL (n=694). All data on this chart are presented as medians. See Introduction for description of regions.



	Fall 2008 Cohort	Fall 2009 Cohort	Fall 2010 Cohort	Fall 2011 Cohort	Fall 2012 Cohort
Far West (59)	63.3%	62.9%	59.8%	62.0%	63.3%
Mid East (132)	62.9%	63.4%	61.8%	63.5%	65.3%
Midwest (184)	57.5%	59.0%	57.8%	59.9%	60.4%
New England (69)	63.7%	65.9%	65.0%	64.9%	66.1%
Southeast (173)	46.6%	45.3%	46.1%	48.3%	48.5%
West (77)	46.0%	46.4%	47.5%	48.3%	47.8%
National Median	54.9%	55.9%	56.0%	56.6%	57.7%

MIDWEST REGION (n=184). In addition to the median, which is the 50th percentile, this chart shows the 75th and 25th percentiles for the region.



	Fall 2008 Cohort	Fall 2009 Cohort	Fall 2010 Cohort	Fall 2011 Cohort	Fall 2012 Cohort
75th Percentile	70.1%	68.1%	68.9%	69.0%	70.0%
50th Percentile	57.5%	59.0%	57.8%	59.9%	60.4%
25th Percentile	47.2%	49.0%	47.4%	48.8%	50.3%
National Median	54.9%	55.9%	56.0%	56.6%	57.7%
DOMINICAN	62.7%	59.3%	61.8%	62.1%	61.5%

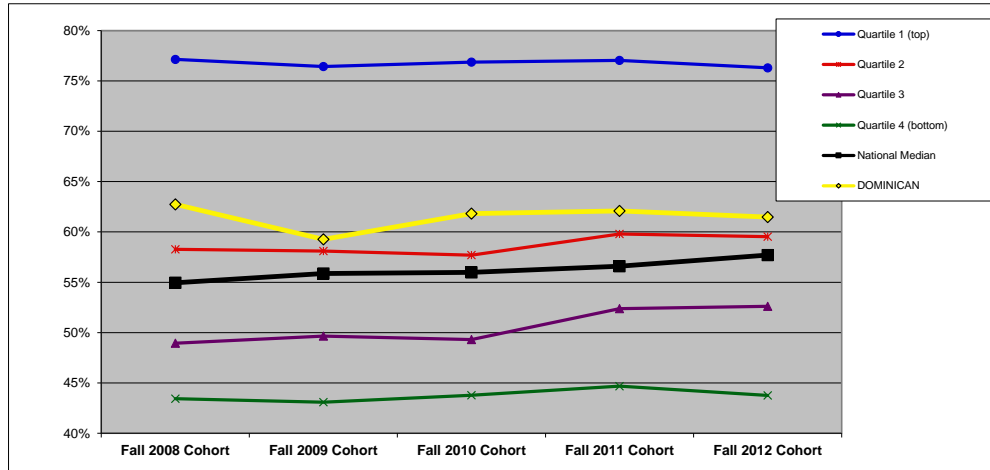
GRADUATION RATE (%): BY FINANCIAL RESOURCES (5F)

DEFINITION: The six-year, cohort graduation rate for full-time, first-time degree-seeking undergraduate students. For example, the Fall 2012 Cohort rate is the percentage that graduated by end of Summer 2018. (All national and regional data are presented as medians.)

	Fall 2008 Cohort	Fall 2009 Cohort	Fall 2010 Cohort	Fall 2011 Cohort	Fall 2012 Cohort
DOMINICAN	62.7%	59.3%	61.8%	62.1%	61.5%

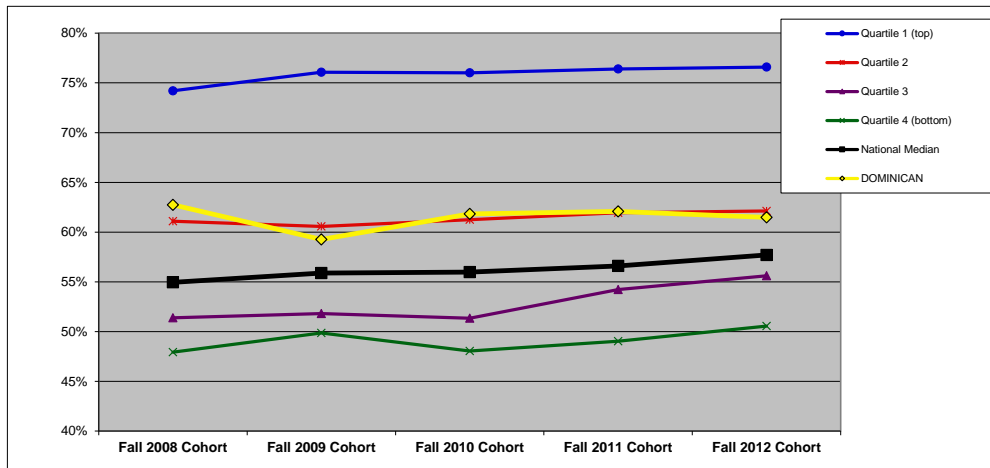
QUARTILES	
NATIONAL	2
REGIONAL	2

NATIONAL: FINANCIAL RESOURCES (n=687).



	Fall 2008 Cohort	Fall 2009 Cohort	Fall 2010 Cohort	Fall 2011 Cohort	Fall 2012 Cohort
Quartile 1 (top)	77.1%	76.4%	76.9%	77.0%	76.3%
Quartile 2	58.3%	58.1%	57.7%	59.8%	59.5%
Quartile 3	48.9%	49.6%	49.3%	52.4%	52.6%
Quartile 4 (bottom)	43.4%	43.1%	43.8%	44.7%	43.8%
National Median	54.9%	55.9%	56.0%	56.6%	57.7%
DOMINICAN	62.7%	59.3%	61.8%	62.1%	61.5%

MIDWEST REGION: FINANCIAL RESOURCES (n=181).



	Fall 2008 Cohort	Fall 2009 Cohort	Fall 2010 Cohort	Fall 2011 Cohort	Fall 2012 Cohort
Quartile 1 (top)	74.2%	76.1%	76.0%	76.4%	76.6%
Quartile 2	61.1%	60.6%	61.3%	61.9%	62.1%
Quartile 3	51.4%	51.8%	51.3%	54.2%	55.6%
Quartile 4 (bottom)	47.9%	49.9%	48.0%	49.0%	50.5%
National Median	54.9%	55.9%	56.0%	56.6%	57.7%
DOMINICAN	62.7%	59.3%	61.8%	62.1%	61.5%

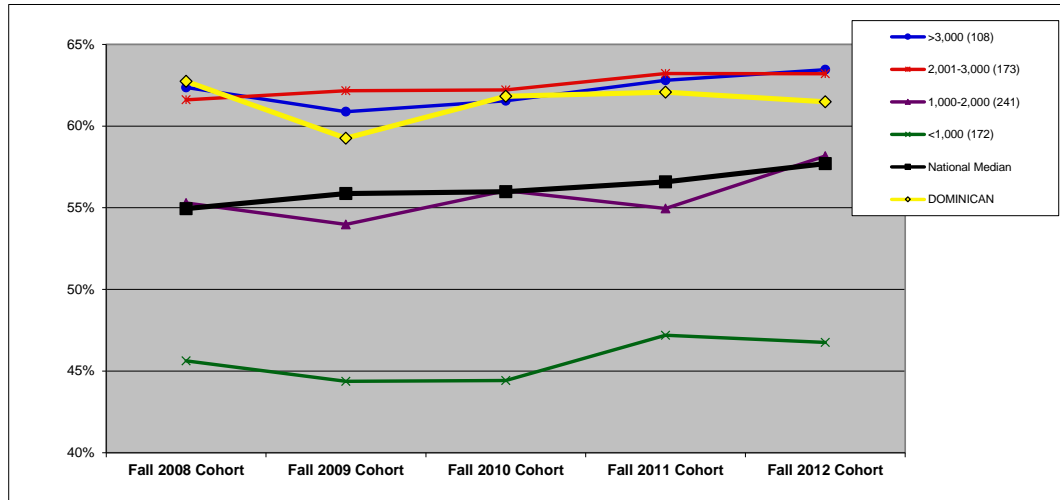
GRADUATION RATE (%): BY ENROLLMENT SIZE (5S)

DEFINITION: The six-year, cohort graduation rate for full-time, first-time degree-seeking undergraduate students. For example, the Fall 2012 Cohort rate is the percentage that graduated by end of Summer 2018. (All national and regional data are presented as medians.)

	Fall 2008 Cohort	Fall 2009 Cohort	Fall 2010 Cohort	Fall 2011 Cohort	Fall 2012 Cohort
DOMINICAN	62.7%	59.3%	61.8%	62.1%	61.5%

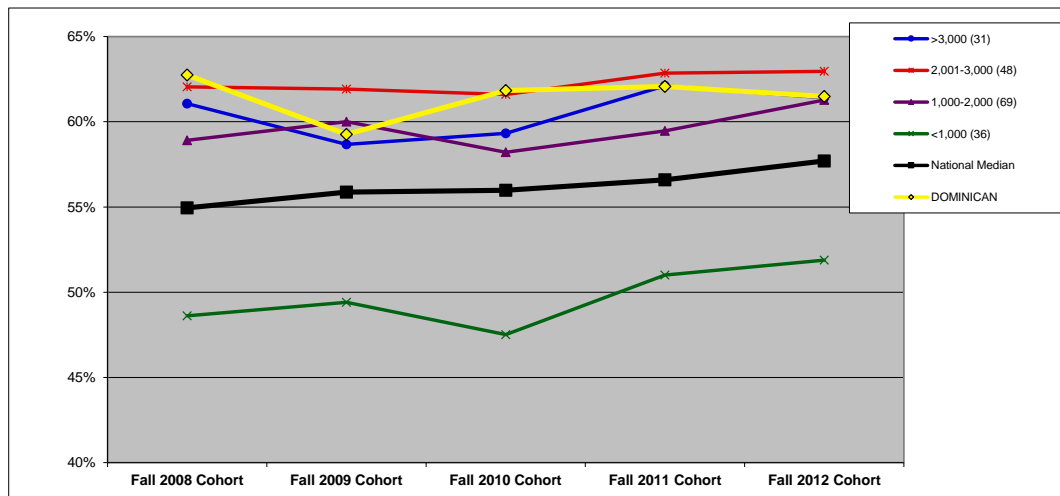
SIZE 2,001-3,000

NATIONAL: SIZE (n=694).



	Fall 2008 Cohort	Fall 2009 Cohort	Fall 2010 Cohort	Fall 2011 Cohort	Fall 2012 Cohort
>3,000 (108)	62.4%	60.9%	61.5%	62.8%	63.5%
2,001-3,000 (173)	61.6%	62.2%	62.2%	63.2%	63.2%
1,000-2,000 (241)	55.3%	54.0%	56.0%	55.0%	58.2%
<1,000 (172)	45.6%	44.4%	44.4%	47.2%	46.8%
National Median	54.9%	55.9%	56.0%	56.6%	57.7%
DOMINICAN	62.7%	59.3%	61.8%	62.1%	61.5%

MIDWEST REGION: SIZE (n=184).



	Fall 2008 Cohort	Fall 2009 Cohort	Fall 2010 Cohort	Fall 2011 Cohort	Fall 2012 Cohort
>3,000 (31)	61.1%	58.7%	59.3%	62.1%	61.4%
2,001-3,000 (48)	62.1%	61.9%	61.6%	62.9%	63.0%
1,000-2,000 (69)	58.9%	60.0%	58.2%	59.5%	61.3%
<1,000 (36)	48.6%	49.4%	47.5%	51.0%	51.9%
National Median	54.9%	55.9%	56.0%	56.6%	57.7%
DOMINICAN	62.7%	59.3%	61.8%	62.1%	61.5%

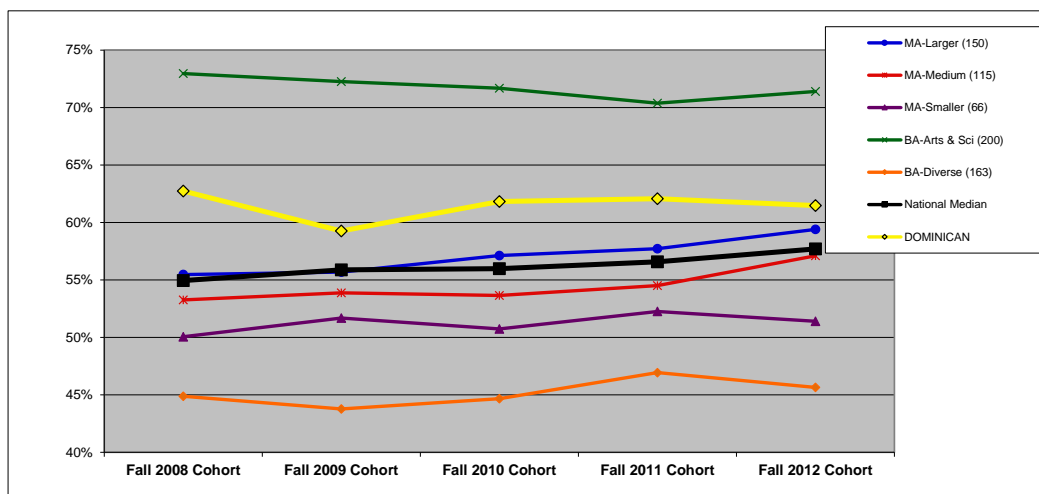
GRADUATION RATE (%): BY CARNEGIE CLASSIFICATION (5C)

DEFINITION: The six-year, cohort graduation rate for full-time, first-time degree-seeking undergraduate students. For example, the Fall 2012 Cohort rate is the percentage that graduated by end of Summer 2018. See Introduction for description of Carnegie classifications. (All national and regional data are presented as medians.)

	Fall 2008 Cohort	Fall 2009 Cohort	Fall 2010 Cohort	Fall 2011 Cohort	Fall 2012 Cohort
DOMINICAN	62.7%	59.3%	61.8%	62.1%	61.5%

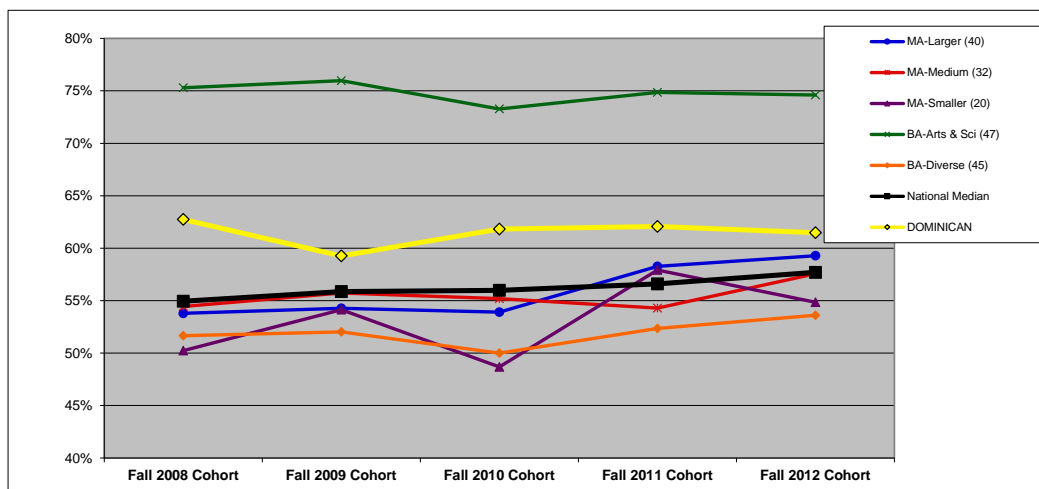
CARNEGIE MA-Larger

NATIONAL: CARNEGIE (n=694).



	Fall 2008 Cohort	Fall 2009 Cohort	Fall 2010 Cohort	Fall 2011 Cohort	Fall 2012 Cohort
MA-Larger (150)	55.5%	55.7%	57.1%	57.7%	59.4%
MA-Medium (115)	53.3%	53.9%	53.6%	54.5%	57.1%
MA-Smaller (66)	50.1%	51.7%	50.7%	52.3%	51.4%
BA-Arts & Sci (200)	73.0%	72.3%	71.7%	70.4%	71.4%
BA-Diverse (163)	44.9%	43.8%	44.7%	46.9%	45.6%
National Median	54.9%	55.9%	56.0%	56.6%	57.7%
DOMINICAN	62.7%	59.3%	61.8%	62.1%	61.5%

MIDWEST REGION: CARNEGIE (n=184).



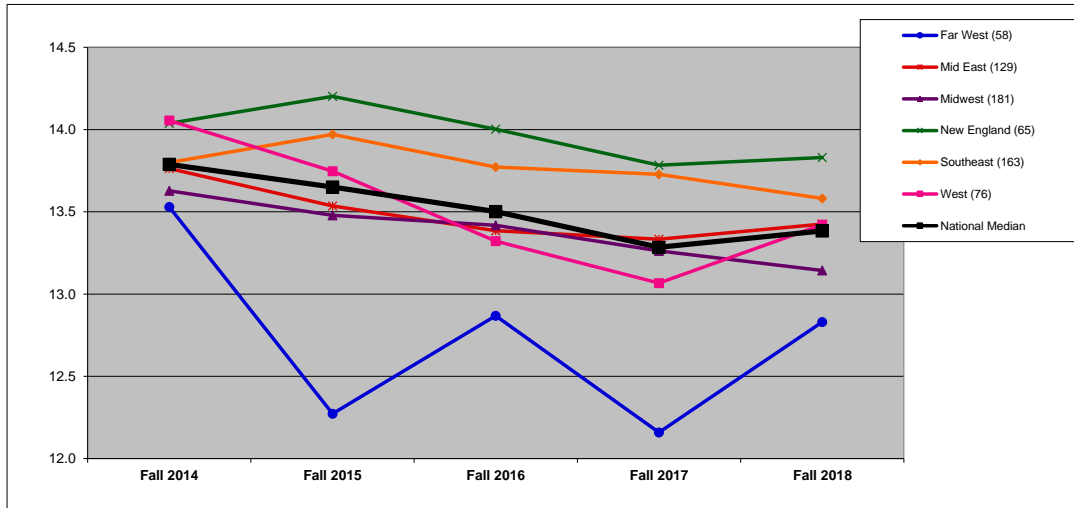
	Fall 2008 Cohort	Fall 2009 Cohort	Fall 2010 Cohort	Fall 2011 Cohort	Fall 2012 Cohort
MA-Larger (40)	53.8%	54.3%	53.9%	58.3%	59.3%
MA-Medium (32)	54.4%	55.7%	55.2%	54.3%	57.6%
MA-Smaller (20)	50.2%	54.1%	48.7%	57.9%	54.9%
BA-Arts & Sci (47)	75.3%	76.0%	73.3%	74.9%	74.6%
BA-Diverse (45)	51.7%	52.0%	50.0%	52.3%	53.6%
National Median	54.9%	55.9%	56.0%	56.6%	57.7%
DOMINICAN	62.7%	59.3%	61.8%	62.1%	61.5%

STUDENT/FACULTY RATIO: BY REGION (6R)

DEFINITION: Total 12-month student FTE (undergraduate, graduate, and first-professional) divided by instructional faculty FTE.

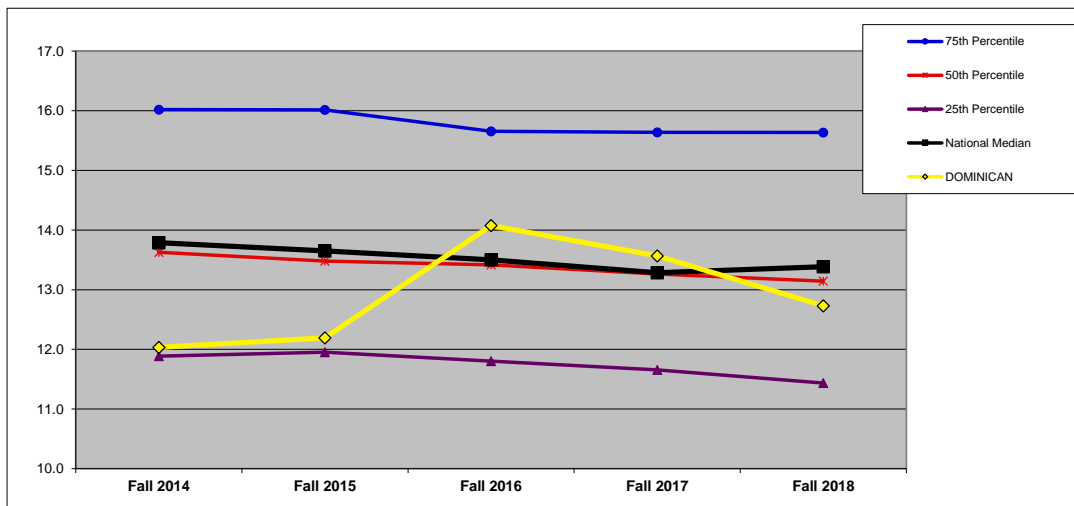
	Fall 2014	Fall 2015	Fall 2016	Fall 2017	Fall 2018	Y1 to Y5 Change
DOMINICAN	12.0	12.2	14.1	13.6	12.7	5.8%

NATIONAL (n=672). All data on this chart are presented as medians. See Introduction for description of regions.



	Fall 2014	Fall 2015	Fall 2016	Fall 2017	Fall 2018	Y1 to Y5 Change
Far West (58)	13.5	12.3	12.9	12.2	12.8	-5.2%
Mid East (129)	13.8	13.5	13.4	13.3	13.4	-2.5%
Midwest (181)	13.6	13.5	13.4	13.3	13.1	-3.6%
New England (65)	14.0	14.2	14.0	13.8	13.8	-1.5%
Southeast (163)	13.8	14.0	13.8	13.7	13.6	-1.6%
West (76)	14.1	13.7	13.3	13.1	13.4	-4.5%
National Median	13.8	13.7	13.5	13.3	13.4	-2.9%

MIDWEST REGION (n=181). In addition to the median, which is the 50th percentile, this chart shows the 75th and 25th percentiles for the region.



	Fall 2014	Fall 2015	Fall 2016	Fall 2017	Fall 2018	Y1 to Y5 Change
75th Percentile	16.0	16.0	15.7	15.6	15.6	-2.4%
50th Percentile	13.6	13.5	13.4	13.3	13.1	-3.6%
25th Percentile	11.9	12.0	11.8	11.7	11.4	-3.8%
National Median	13.8	13.7	13.5	13.3	13.4	-2.9%
DOMINICAN	12.0	12.2	14.1	13.6	12.7	5.8%

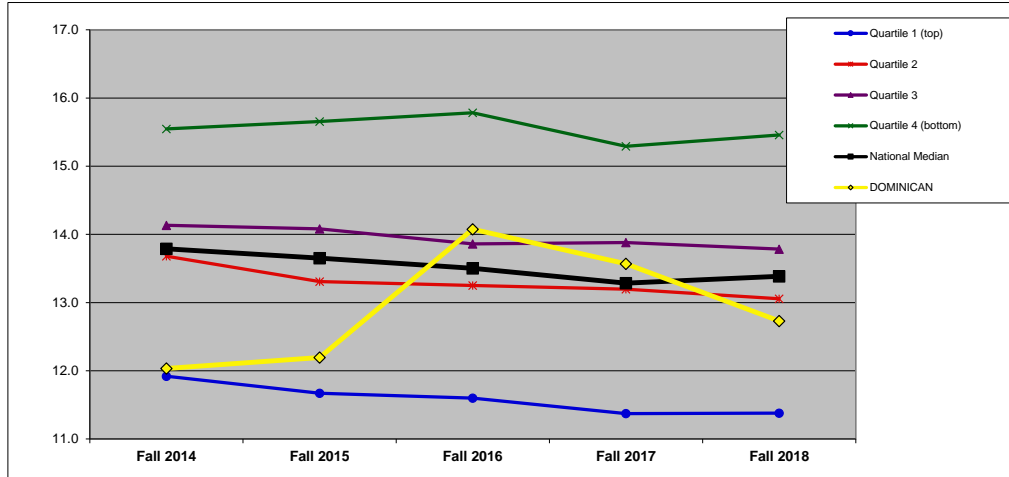
STUDENT/FACULTY RATIO: BY FINANCIAL RESOURCES (6F)

DEFINITION: Total 12-month student FTE (undergraduate, graduate, and first-professional) divided by instructional faculty FTE.
(All national and regional data are presented as medians.)

	Fall 2014	Fall 2015	Fall 2016	Fall 2017	Fall 2018	Y1 to Y5 Change
DOMINICAN	12.0	12.2	14.1	13.6	12.7	5.8%

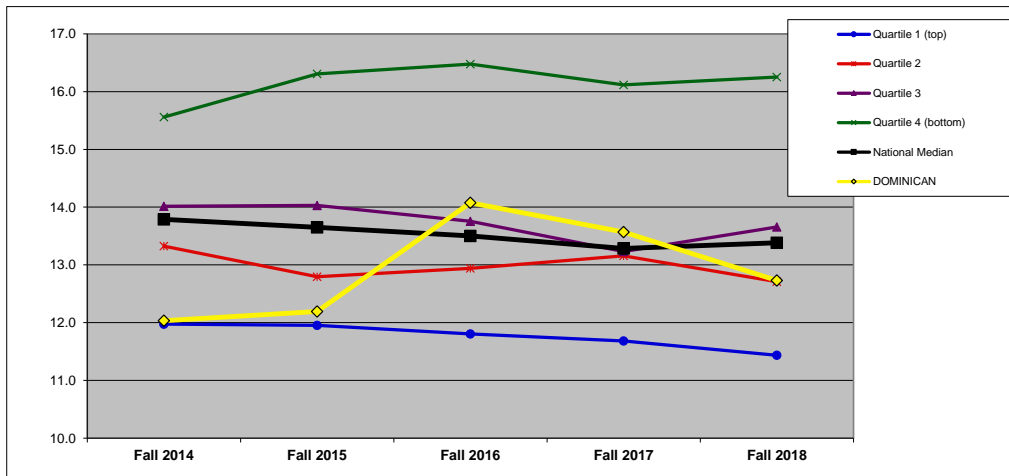
QUARTILES	
NATIONAL	2
REGIONAL	2

NATIONAL: FINANCIAL RESOURCES (n=666).



	Fall 2014	Fall 2015	Fall 2016	Fall 2017	Fall 2018	Y1 to Y5 Change
Quartile 1 (top)	11.9	11.7	11.6	11.4	11.4	-4.6%
Quartile 2	13.7	13.3	13.2	13.2	13.1	-4.6%
Quartile 3	14.1	14.1	13.9	13.9	13.8	-2.5%
Quartile 4 (bottom)	15.5	15.7	15.8	15.3	15.5	-0.6%
National Median	13.8	13.7	13.5	13.3	13.4	-2.9%
DOMINICAN	12.0	12.2	14.1	13.6	12.7	5.8%

MIDWEST REGION: FINANCIAL RESOURCES (n=178).



	Fall 2014	Fall 2015	Fall 2016	Fall 2017	Fall 2018	Y1 to Y5 Change
Quartile 1 (top)	12.0	12.0	11.8	11.7	11.4	-4.5%
Quartile 2	13.3	12.8	12.9	13.2	12.7	-4.6%
Quartile 3	14.0	14.0	13.8	13.2	13.7	-2.6%
Quartile 4 (bottom)	15.6	16.3	16.5	16.1	16.3	4.5%
National Median	13.8	13.7	13.5	13.3	13.4	-2.9%
DOMINICAN	12.0	12.2	14.1	13.6	12.7	5.8%

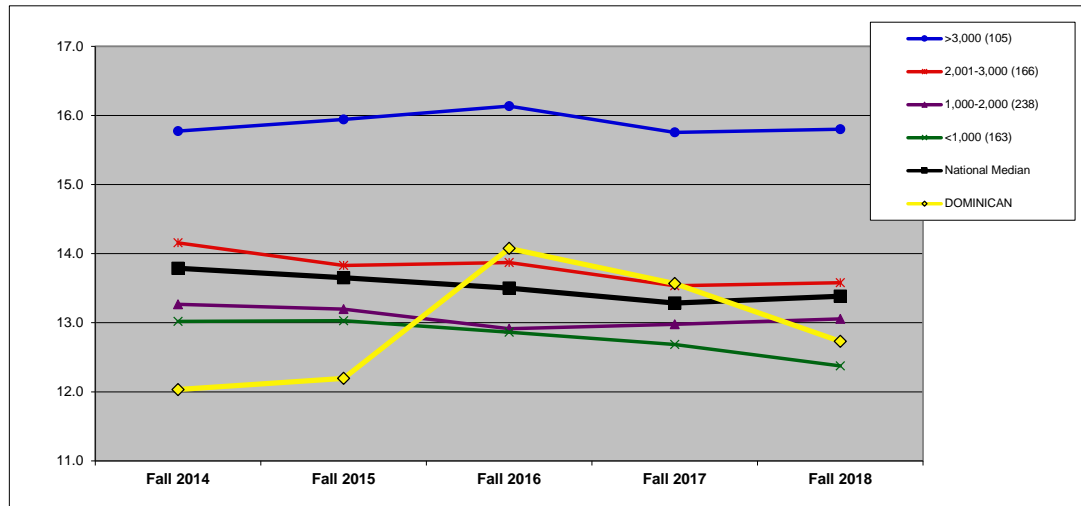
STUDENT/FACULTY RATIO: BY ENROLLMENT SIZE (6S)

DEFINITION: Total 12-month student FTE (undergraduate, graduate, and first-professional) divided by instructional faculty FTE.
(All national and regional data are presented as medians.)

	Fall 2014	Fall 2015	Fall 2016	Fall 2017	Fall 2018	Y1 to Y5 Change
DOMINICAN	12.0	12.2	14.1	13.6	12.7	5.8%

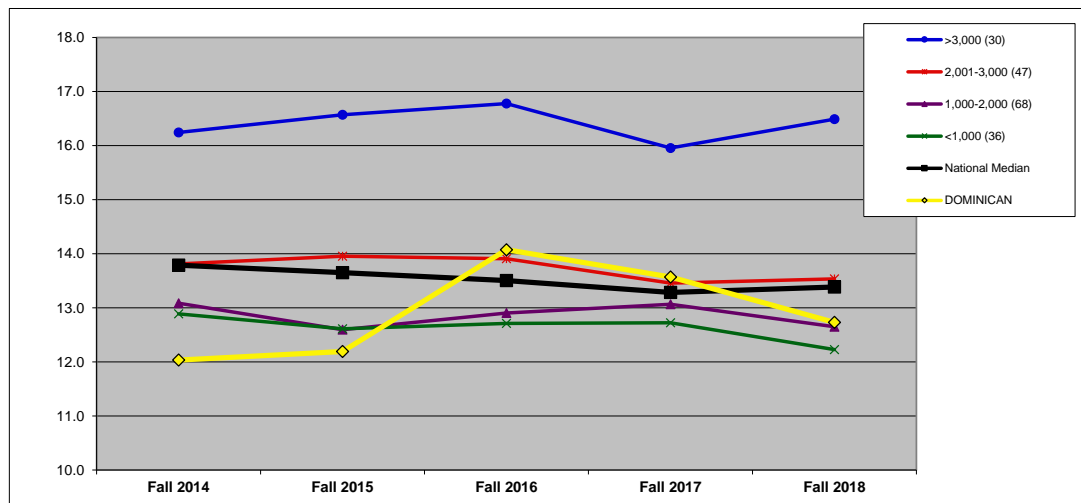
SIZE 2,001-3,000

NATIONAL: SIZE (n=672).



	Fall 2014	Fall 2015	Fall 2016	Fall 2017	Fall 2018	Y1 to Y5 Change
>3,000 (105)	15.8	15.9	16.1	15.8	15.8	0.2%
2,001-3,000 (166)	14.2	13.8	13.9	13.5	13.6	-4.1%
1,000-2,000 (238)	13.3	13.2	12.9	13.0	13.1	-1.6%
<1,000 (163)	13.0	13.0	12.9	12.7	12.4	-4.9%
National Median	13.8	13.7	13.5	13.3	13.4	-2.9%
DOMINICAN	12.0	12.2	14.1	13.6	12.7	5.8%

MIDWEST REGION: SIZE (n=181).



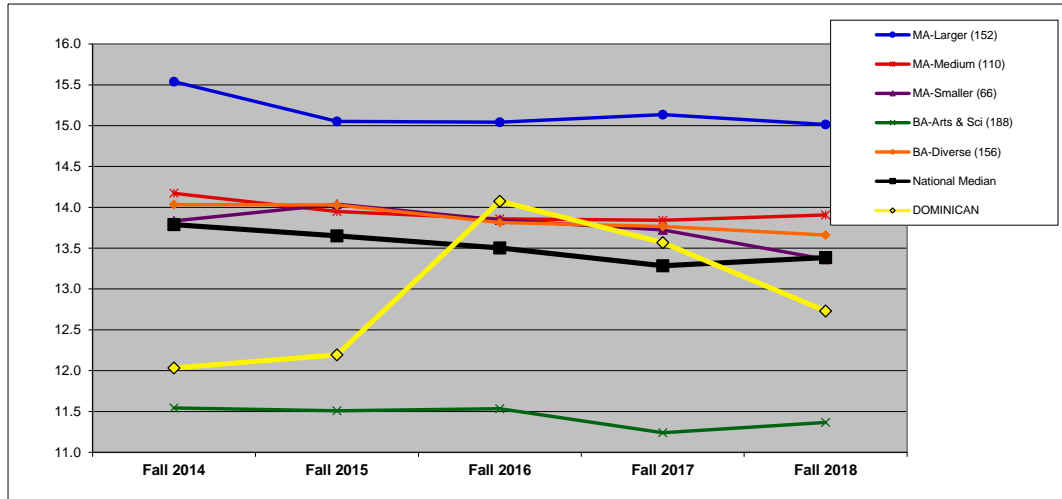
	Fall 2014	Fall 2015	Fall 2016	Fall 2017	Fall 2018	Y1 to Y5 Change
>3,000 (30)	16.2	16.6	16.8	16.0	16.5	1.5%
2,001-3,000 (47)	13.8	14.0	13.9	13.5	13.5	-2.0%
1,000-2,000 (68)	13.1	12.6	12.9	13.1	12.7	-3.3%
<1,000 (36)	12.9	12.6	12.7	12.7	12.2	-5.1%
National Median	13.8	13.7	13.5	13.3	13.4	-2.9%
DOMINICAN	12.0	12.2	14.1	13.6	12.7	5.8%

STUDENT/FACULTY RATIO: BY CARNEGIE CLASSIFICATION (6C)

DEFINITION: Total 12-month student FTE (undergraduate, graduate, and first-professional) divided by instructional faculty FTE. See Introduction for description of Carnegie classifications. (All national and regional data are presented as medians.)

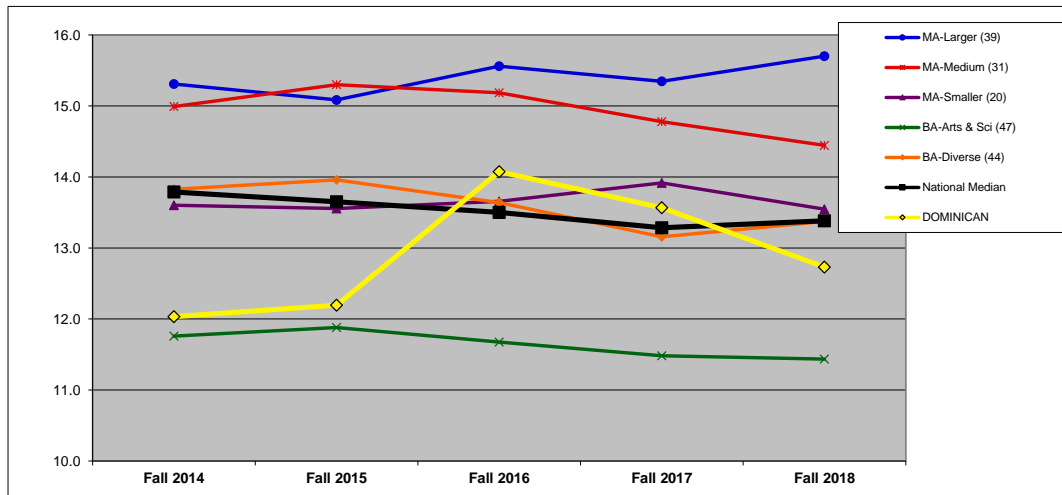
	Fall 2014	Fall 2015	Fall 2016	Fall 2017	Fall 2018	Y1 to Y5 Change	CARNEGIE
DOMINICAN	12.0	12.2	14.1	13.6	12.7	5.8%	MA-Larger

NATIONAL: CARNEGIE (n=672).



	Fall 2014	Fall 2015	Fall 2016	Fall 2017	Fall 2018	Y1 to Y5 Change
MA-Larger (152)	15.5	15.1	15.0	15.1	15.0	-3.4%
MA-Medium (110)	14.2	13.9	13.9	13.8	13.9	-1.9%
MA-Smaller (66)	13.8	14.0	13.8	13.7	13.4	-3.4%
BA-Arts & Sci (188)	11.5	11.5	11.5	11.2	11.4	-1.5%
BA-Diverse (156)	14.0	14.0	13.8	13.8	13.7	-2.7%
National Median	13.8	13.7	13.5	13.3	13.4	-2.9%
DOMINICAN	12.0	12.2	14.1	13.6	12.7	5.8%

MIDWEST REGION: CARNEGIE (n=181).



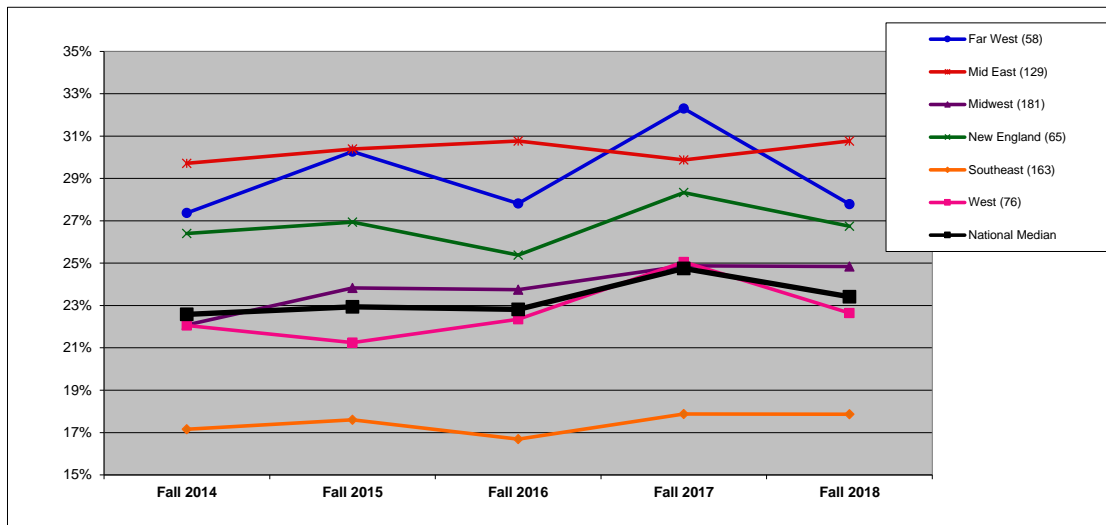
	Fall 2014	Fall 2015	Fall 2016	Fall 2017	Fall 2018	Y1 to Y5 Change
MA-Larger (39)	15.3	15.1	15.6	15.3	15.7	2.6%
MA-Medium (31)	15.0	15.3	15.2	14.8	14.4	-3.6%
MA-Smaller (20)	13.6	13.6	13.7	13.9	13.5	-0.4%
BA-Arts & Sci (47)	11.8	11.9	11.7	11.5	11.4	-2.7%
BA-Diverse (44)	13.8	14.0	13.6	13.2	13.4	-3.3%
National Median	13.8	13.7	13.5	13.3	13.4	-2.9%
DOMINICAN	12.0	12.2	14.1	13.6	12.7	5.8%

PART-TIME FACULTY (%): BY REGION (7R)

DEFINITION: Full-time equivalent (FTE) for part-time instructional faculty as a percentage of total instructional faculty FTE.

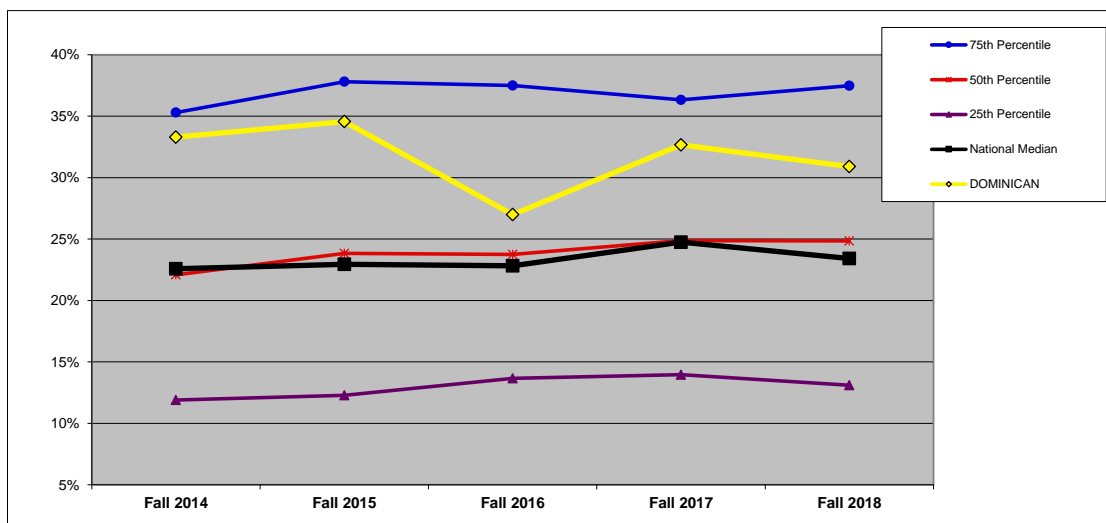
	Fall 2014	Fall 2015	Fall 2016	Fall 2017	Fall 2018
DOMINICAN	33.3%	34.6%	27.0%	32.7%	30.9%

NATIONAL (n=672). All data on this chart are presented as medians. See Introduction for description of regions.



	Fall 2014	Fall 2015	Fall 2016	Fall 2017	Fall 2018
Far West (58)	27.4%	30.3%	27.8%	32.3%	27.8%
Mid East (129)	29.7%	30.4%	30.8%	29.9%	30.8%
Midwest (181)	22.1%	23.8%	23.8%	24.9%	24.8%
New England (65)	26.4%	26.9%	25.4%	28.3%	26.7%
Southeast (163)	17.2%	17.6%	16.7%	17.9%	17.9%
West (76)	22.1%	21.2%	22.4%	25.1%	22.6%
National Median	22.6%	22.9%	22.8%	24.7%	23.4%

MIDWEST REGION (n=181). In addition to the median, which is the 50th percentile, this chart shows the 75th and 25th percentiles for the region.



	Fall 2014	Fall 2015	Fall 2016	Fall 2017	Fall 2018
75th Percentile	35.3%	37.8%	37.5%	36.3%	37.5%
50th Percentile	22.1%	23.8%	23.8%	24.9%	24.8%
25th Percentile	11.9%	12.3%	13.7%	14.0%	13.1%
National Median	22.6%	22.9%	22.8%	24.7%	23.4%
DOMINICAN	33.3%	34.6%	27.0%	32.7%	30.9%

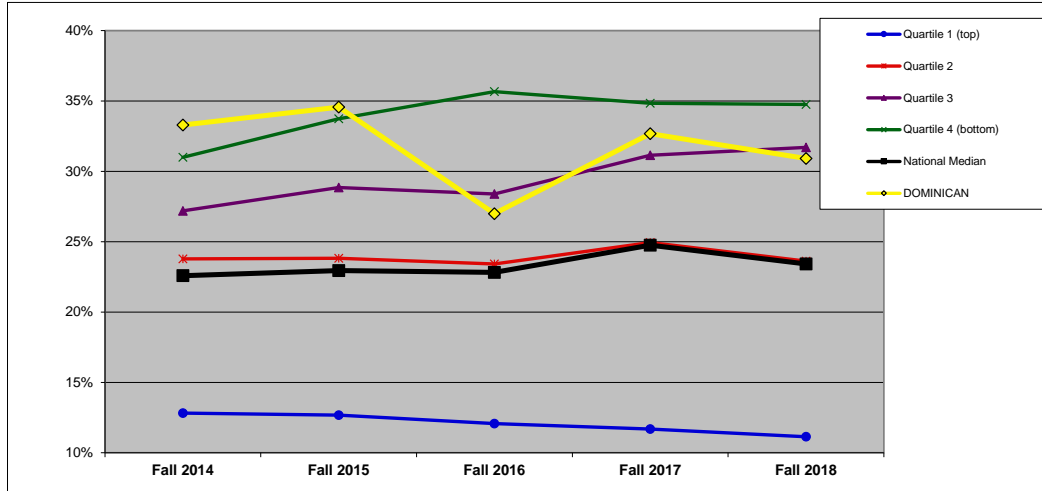
PART-TIME FACULTY (%): BY FINANCIAL RESOURCES (7F)

DEFINITION: Full-time equivalent (FTE) for part-time instructional faculty as a percentage of total instructional faculty FTE. (All national and regional data are presented as medians.)

	Fall 2014	Fall 2015	Fall 2016	Fall 2017	Fall 2018
DOMINICAN	33.3%	34.6%	27.0%	32.7%	30.9%

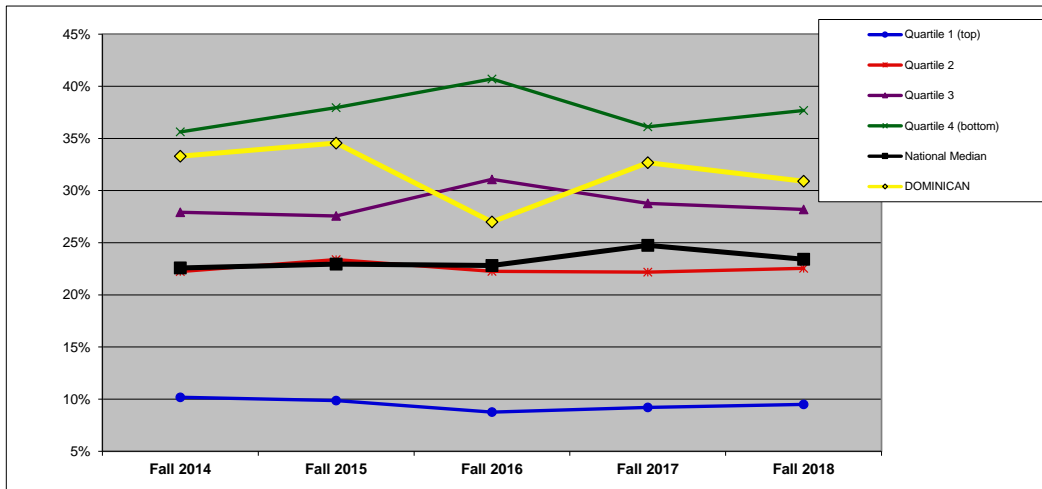
QUARTILES	
NATIONAL	2
REGIONAL	2

NATIONAL: FINANCIAL RESOURCES (n=666).



	Fall 2014	Fall 2015	Fall 2016	Fall 2017	Fall 2018
Quartile 1 (top)	12.8%	12.7%	12.1%	11.7%	11.1%
Quartile 2	23.8%	23.8%	23.4%	24.9%	23.6%
Quartile 3	27.2%	28.8%	28.4%	31.1%	31.7%
Quartile 4 (bottom)	31.0%	33.7%	35.7%	34.8%	34.7%
National Median	22.6%	22.9%	22.8%	24.7%	23.4%
DOMINICAN	33.3%	34.6%	27.0%	32.7%	30.9%

MIDWEST REGION: FINANCIAL RESOURCES (n=178).



	Fall 2014	Fall 2015	Fall 2016	Fall 2017	Fall 2018
Quartile 1 (top)	10.2%	9.9%	8.8%	9.2%	9.5%
Quartile 2	22.2%	23.4%	22.3%	22.2%	22.5%
Quartile 3	27.9%	27.6%	31.1%	28.8%	28.2%
Quartile 4 (bottom)	35.6%	38.0%	40.7%	36.1%	37.7%
National Median	22.6%	22.9%	22.8%	24.7%	23.4%
DOMINICAN	33.3%	34.6%	27.0%	32.7%	30.9%

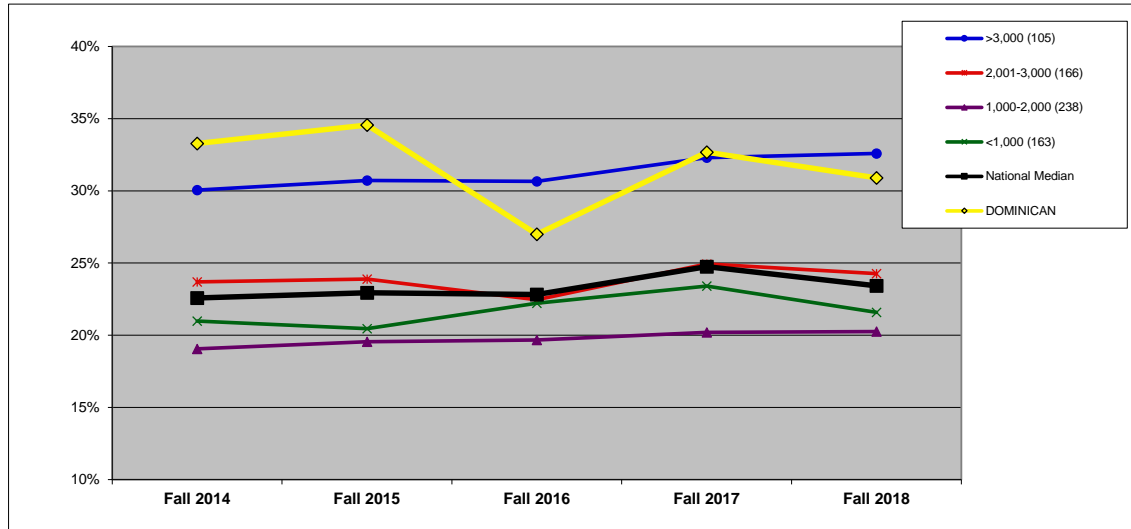
PART-TIME FACULTY (%): BY ENROLLMENT SIZE (7S)

DEFINITION: Full-time equivalent (FTE) for part-time instructional faculty as a percentage of total instructional faculty FTE. (All national and regional data are presented as medians.)

	Fall 2014	Fall 2015	Fall 2016	Fall 2017	Fall 2018
DOMINICAN	33.3%	34.6%	27.0%	32.7%	30.9%

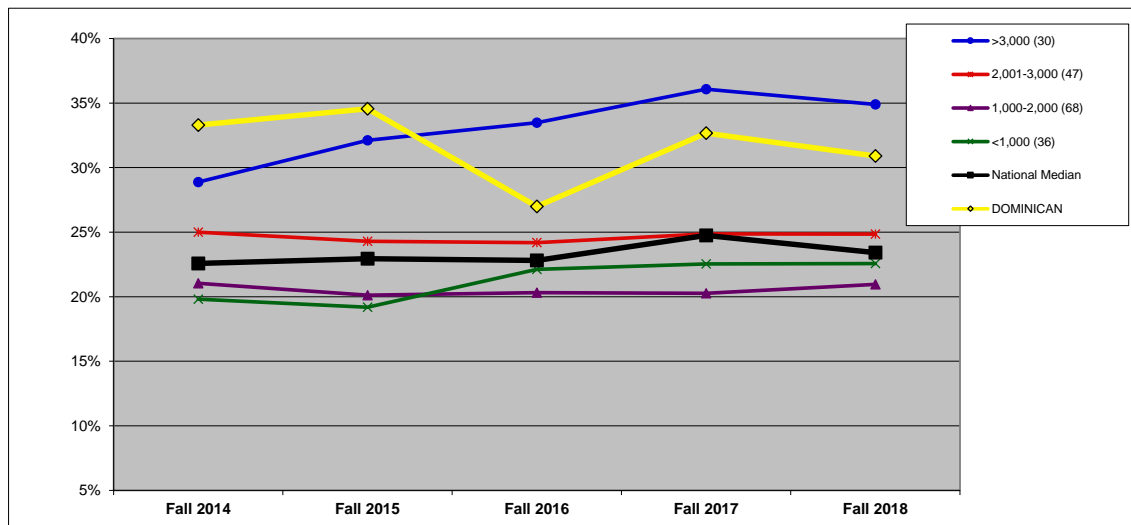
SIZE 2,001-3,000

NATIONAL: SIZE (n=672).



	Fall 2014	Fall 2015	Fall 2016	Fall 2017	Fall 2018
>3,000 (105)	30.1%	30.7%	30.7%	32.3%	32.6%
2,001-3,000 (166)	23.7%	23.9%	22.5%	24.9%	24.3%
1,000-2,000 (238)	19.1%	19.5%	19.7%	20.2%	20.3%
<1,000 (163)	21.0%	20.5%	22.2%	23.4%	21.6%
National Median	22.6%	22.9%	22.8%	24.7%	23.4%
DOMINICAN	33.3%	34.6%	27.0%	32.7%	30.9%

MIDWEST REGION: SIZE (n=181).



	Fall 2014	Fall 2015	Fall 2016	Fall 2017	Fall 2018
>3,000 (30)	28.9%	32.1%	33.5%	36.1%	34.9%
2,001-3,000 (47)	25.0%	24.3%	24.2%	24.9%	24.8%
1,000-2,000 (68)	21.0%	20.1%	20.3%	20.3%	21.0%
<1,000 (36)	19.8%	19.2%	22.1%	22.5%	22.6%
National Median	22.6%	22.9%	22.8%	24.7%	23.4%
DOMINICAN	33.3%	34.6%	27.0%	32.7%	30.9%

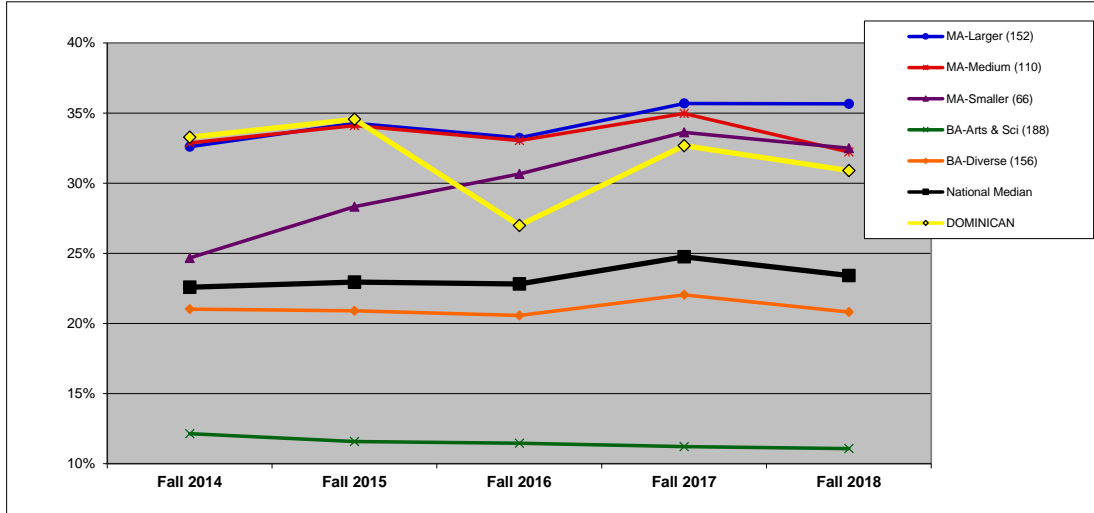
PART-TIME FACULTY (%): BY CARNEGIE CLASSIFICATION (7C)

DEFINITION: Full-time equivalent (FTE) for part-time instructional faculty as a percentage of total instructional faculty FTE. See Introduction for description of Carnegie classifications. (All national and regional data are presented as medians.)

	Fall 2014	Fall 2015	Fall 2016	Fall 2017	Fall 2018
DOMINICAN	33.3%	34.6%	27.0%	32.7%	30.9%

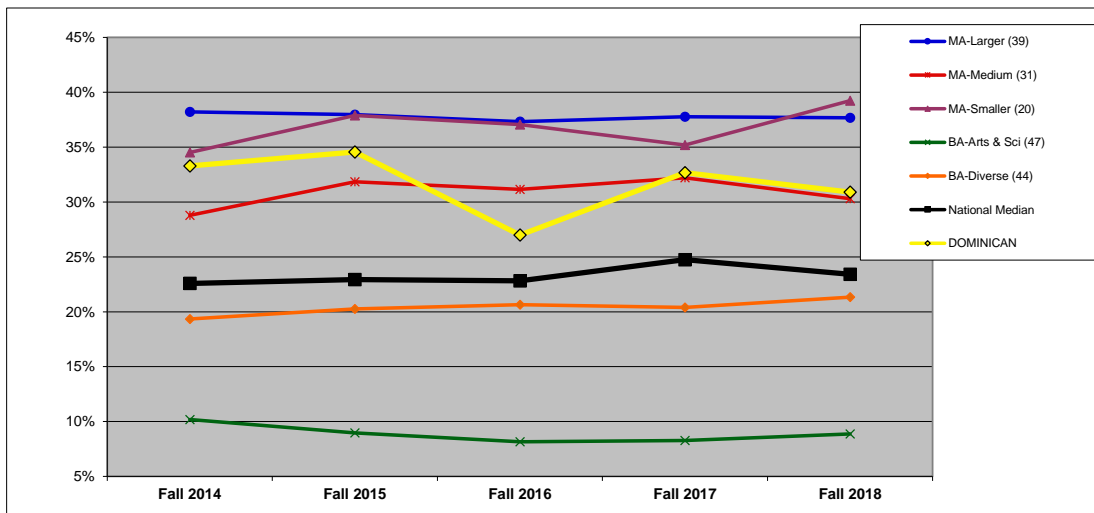
CARNEGIE MA-Larger

NATIONAL: CARNEGIE (n=672).



	Fall 2014	Fall 2015	Fall 2016	Fall 2017	Fall 2018
MA-Larger (152)	32.6%	34.3%	33.2%	35.7%	35.7%
MA-Medium (110)	32.9%	34.1%	33.0%	35.0%	32.2%
MA-Smaller (66)	24.7%	28.3%	30.7%	33.6%	32.5%
BA-Arts & Sci (188)	12.1%	11.6%	11.5%	11.2%	11.1%
BA-Diverse (156)	21.0%	20.9%	20.6%	22.0%	20.8%
National Median	22.6%	22.9%	22.8%	24.7%	23.4%
DOMINICAN	33.3%	34.6%	27.0%	32.7%	30.9%

MIDWEST REGION: CARNEGIE (n=181).



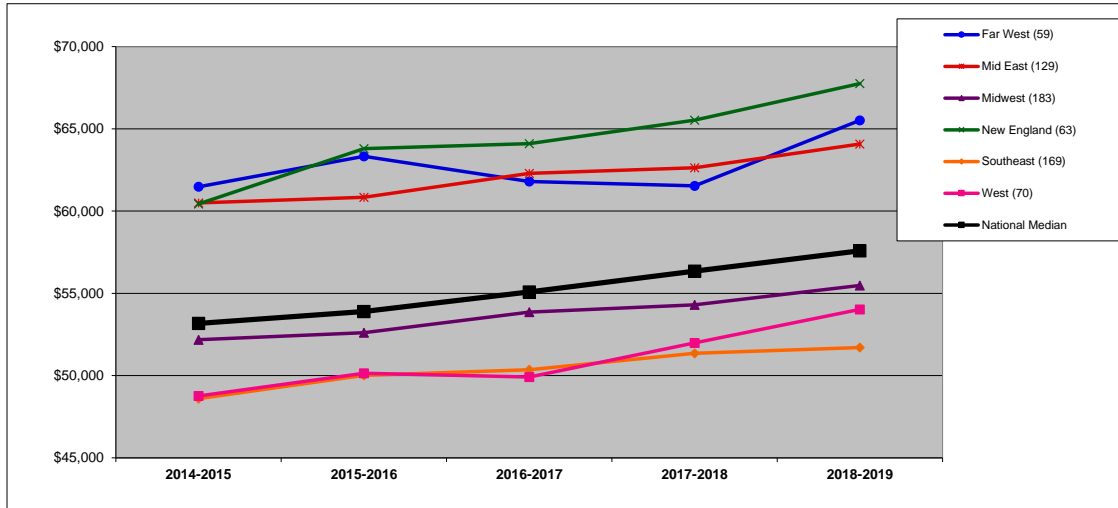
	Fall 2014	Fall 2015	Fall 2016	Fall 2017	Fall 2018
MA-Larger (39)	38.2%	38.0%	37.3%	37.8%	37.7%
MA-Medium (31)	28.8%	31.9%	31.1%	32.2%	30.3%
MA-Smaller (20)	34.5%	37.9%	37.1%	35.2%	39.2%
BA-Arts & Sci (47)	10.2%	9.0%	8.2%	8.3%	8.9%
BA-Diverse (44)	19.3%	20.3%	20.6%	20.4%	21.3%
National Median	22.6%	22.9%	22.8%	24.7%	23.4%
DOMINICAN	33.3%	34.6%	27.0%	32.7%	30.9%

ASSISTANT PROFESSOR AVERAGE SALARY (\$): BY REGION (8R)

DEFINITION: The average salary for assistant professors equated to a 9-month contract.

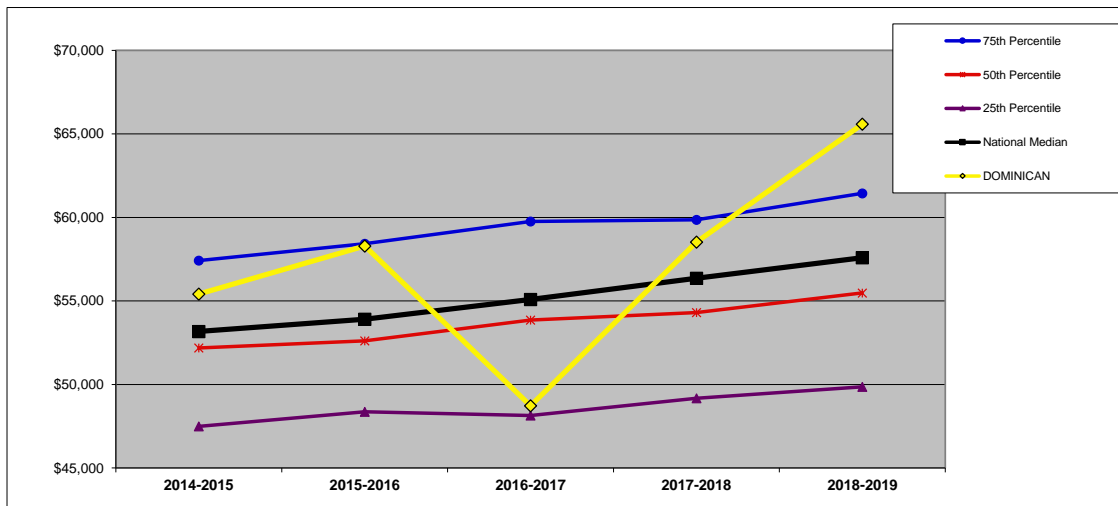
	2014-2015	2015-2016	2016-2017	2017-2018	2018-2019	Y1 to Y5 Change
DOMINICAN	\$ 55,413	\$ 58,284	\$ 48,720	\$ 58,526	\$ 65,581	18.3%

NATIONAL (n=673). All data on this chart are presented as medians. See Introduction for description of regions.



	2014-2015	2015-2016	2016-2017	2017-2018	2018-2019	Y1 to Y5 Change
Far West (59)	\$ 61,479	\$ 63,324	\$ 61,802	\$ 61,539	\$ 65,518	6.6%
Mid East (129)	\$ 60,498	\$ 60,840	\$ 62,294	\$ 62,633	\$ 64,079	5.9%
Midwest (183)	\$ 52,182	\$ 52,614	\$ 53,859	\$ 54,300	\$ 55,480	6.3%
New England (63)	\$ 60,435	\$ 63,801	\$ 64,107	\$ 65,529	\$ 67,752	12.1%
Southeast (169)	\$ 48,600	\$ 50,013	\$ 50,363	\$ 51,350	\$ 51,707	6.4%
West (70)	\$ 48,762	\$ 50,139	\$ 49,914	\$ 51,987	\$ 54,027	10.8%
National Median	\$ 53,172	\$ 53,901	\$ 55,084	\$ 56,352	\$ 57,587	8.3%

MIDWEST REGION (n=183). In addition to the median, which is the 50th percentile, this chart shows the 75th and 25th percentiles for the region.



	2014-2015	2015-2016	2016-2017	2017-2018	2018-2019	Y1 to Y5 Change
75th Percentile	\$ 57,416	\$ 58,428	\$ 59,756	\$ 59,862	\$ 61,444	7.0%
50th Percentile	\$ 52,182	\$ 52,614	\$ 53,859	\$ 54,300	\$ 55,480	6.3%
25th Percentile	\$ 47,489	\$ 48,362	\$ 48,142	\$ 49,178	\$ 49,857	5.0%
National Median	\$ 53,172	\$ 53,901	\$ 55,084	\$ 56,352	\$ 57,587	8.3%
DOMINICAN	\$ 55,413	\$ 58,284	\$ 48,720	\$ 58,526	\$ 65,581	18.3%

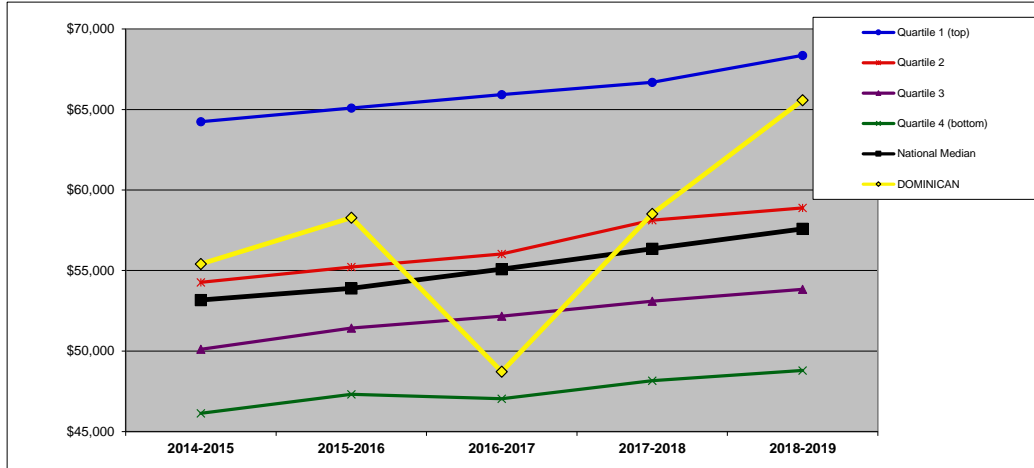
ASSISTANT PROFESSOR AVERAGE SALARY (\$): BY FINANCIAL RESOURCES (8F)

DEFINITION: The average salary for assistant professors equated to a 9-month contract. (All national and regional data are presented as medians.)

	2014-2015	2015-2016	2016-2017	2017-2018	2018-2019	Y1 to Y5 Change
DOMINICAN	\$ 55,413	\$ 58,284	\$ 48,720	\$ 58,526	\$ 65,581	18.3%

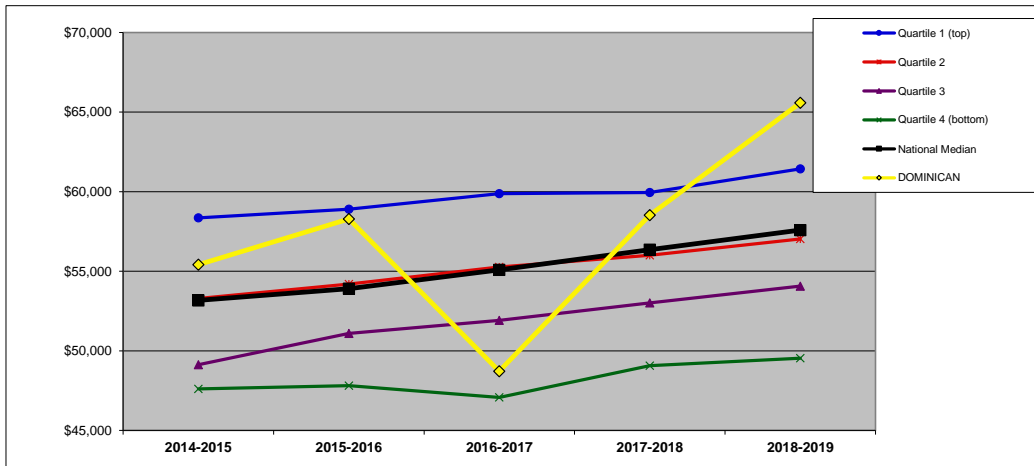
QUARTILES	
NATIONAL	2
REGIONAL	2

NATIONAL: FINANCIAL RESOURCES (n=670).



	2014-2015	2015-2016	2016-2017	2017-2018	2018-2019	Y1 to Y5 Change
Quartile 1 (top)	\$ 64,242	\$ 65,088	\$ 65,920	\$ 66,686	\$ 68,362	6.4%
Quartile 2	\$ 54,270	\$ 55,224	\$ 56,028	\$ 58,131	\$ 58,888	8.5%
Quartile 3	\$ 50,112	\$ 51,435	\$ 52,165	\$ 53,095	\$ 53,835	7.4%
Quartile 4 (bottom)	\$ 46,139	\$ 47,313	\$ 47,043	\$ 48,166	\$ 48,799	5.8%
National Median	\$ 53,172	\$ 53,901	\$ 55,084	\$ 56,352	\$ 57,587	8.3%
DOMINICAN	\$ 55,413	\$ 58,284	\$ 48,720	\$ 58,526	\$ 65,581	18.3%

MIDWEST REGION: FINANCIAL RESOURCES (n=181).



	2014-2015	2015-2016	2016-2017	2017-2018	2018-2019	Y1 to Y5 Change
Quartile 1 (top)	\$ 58,352	\$ 58,902	\$ 59,875	\$ 59,946	\$ 61,432	5.3%
Quartile 2	\$ 53,289	\$ 54,189	\$ 55,271	\$ 56,008	\$ 57,029	7.0%
Quartile 3	\$ 49,127	\$ 51,098	\$ 51,910	\$ 53,017	\$ 54,066	10.1%
Quartile 4 (bottom)	\$ 47,610	\$ 47,808	\$ 47,070	\$ 49,070	\$ 49,535	4.0%
National Median	\$ 53,172	\$ 53,901	\$ 55,084	\$ 56,352	\$ 57,587	8.3%
DOMINICAN	\$ 55,413	\$ 58,284	\$ 48,720	\$ 58,526	\$ 65,581	18.3%

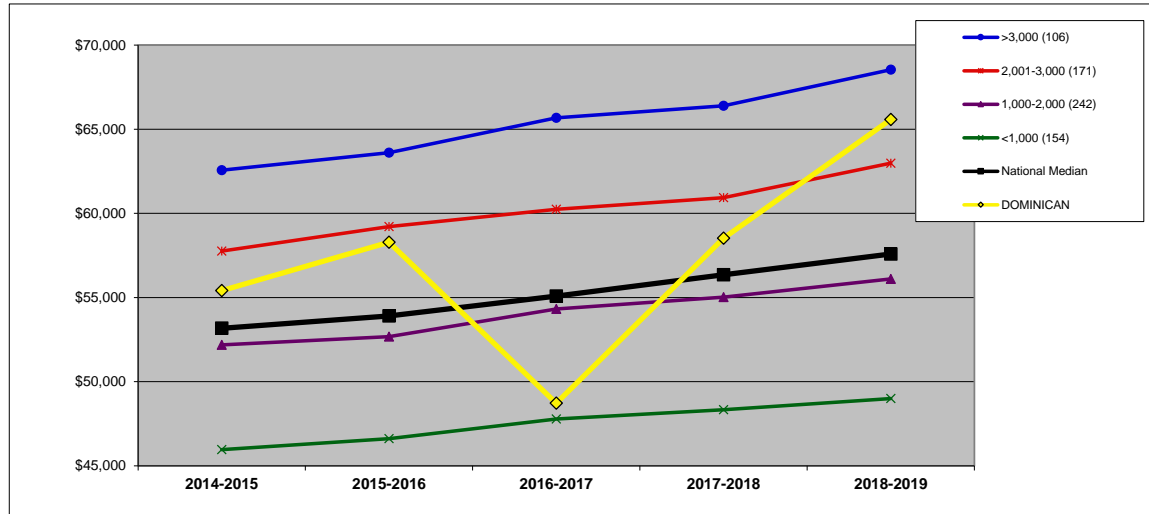
ASSISTANT PROFESSOR AVERAGE SALARY (\$): BY ENROLLMENT SIZE (8S)

DEFINITION: The average salary for assistant professors equated to a 9-month contract.

	2014-2015	2015-2016	2016-2017	2017-2018	2018-2019	Y1 to Y5 Change
DOMINICAN	\$ 55,413	\$ 58,284	\$ 48,720	\$ 58,526	\$ 65,581	18.3%

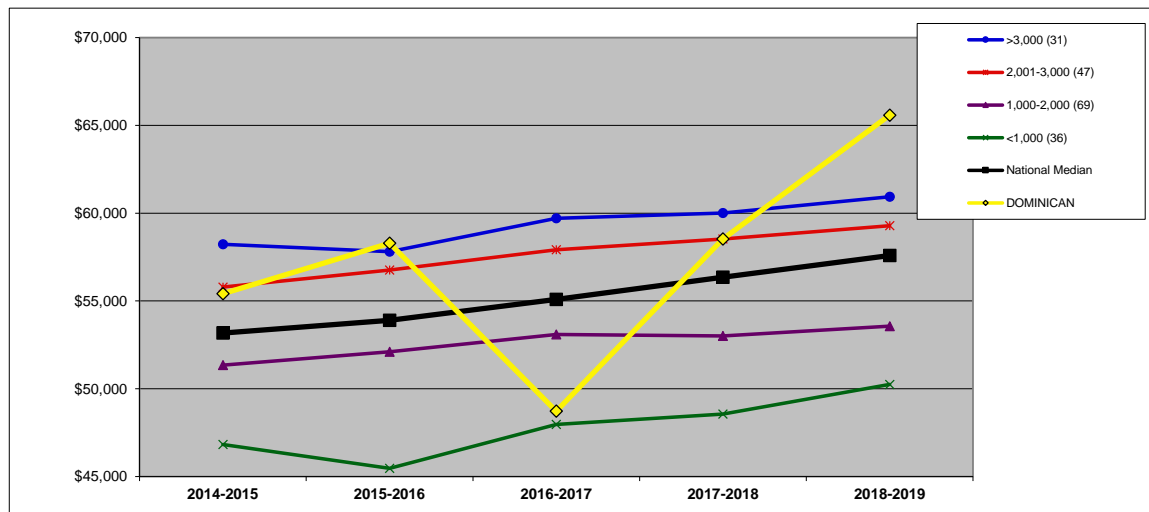
SIZE 2,001-3,000

NATIONAL: SIZE (n=673).



	2014-2015	2015-2016	2016-2017	2017-2018	2018-2019	Y1 to Y5 Change
>3,000 (106)	\$ 62,568	\$ 63,612	\$ 65,675	\$ 66,399	\$ 68,538	9.5%
2,001-3,000 (171)	\$ 57,762	\$ 59,220	\$ 60,246	\$ 60,936	\$ 62,984	9.0%
1,000-2,000 (242)	\$ 52,187	\$ 52,677	\$ 54,324	\$ 55,021	\$ 56,106	7.5%
<1,000 (154)	\$ 45,963	\$ 46,620	\$ 47,785	\$ 48,337	\$ 48,997	6.6%
National Median	\$ 53,172	\$ 53,901	\$ 55,084	\$ 56,352	\$ 57,587	8.3%
DOMINICAN	\$ 55,413	\$ 58,284	\$ 48,720	\$ 58,526	\$ 65,581	18.3%

MIDWEST REGION: SIZE (n=183).



	2014-2015	2015-2016	2016-2017	2017-2018	2018-2019	Y1 to Y5 Change
>3,000 (31)	\$ 58,230	\$ 57,807	\$ 59,711	\$ 60,014	\$ 60,934	4.6%
2,001-3,000 (47)	\$ 55,791	\$ 56,763	\$ 57,915	\$ 58,526	\$ 59,285	6.3%
1,000-2,000 (69)	\$ 51,345	\$ 52,110	\$ 53,094	\$ 53,003	\$ 53,565	4.3%
<1,000 (36)	\$ 46,827	\$ 45,468	\$ 47,974	\$ 48,558	\$ 50,247	7.3%
National Median	\$ 53,172	\$ 53,901	\$ 55,084	\$ 56,352	\$ 57,587	8.3%
DOMINICAN	\$ 55,413	\$ 58,284	\$ 48,720	\$ 58,526	\$ 65,581	18.3%

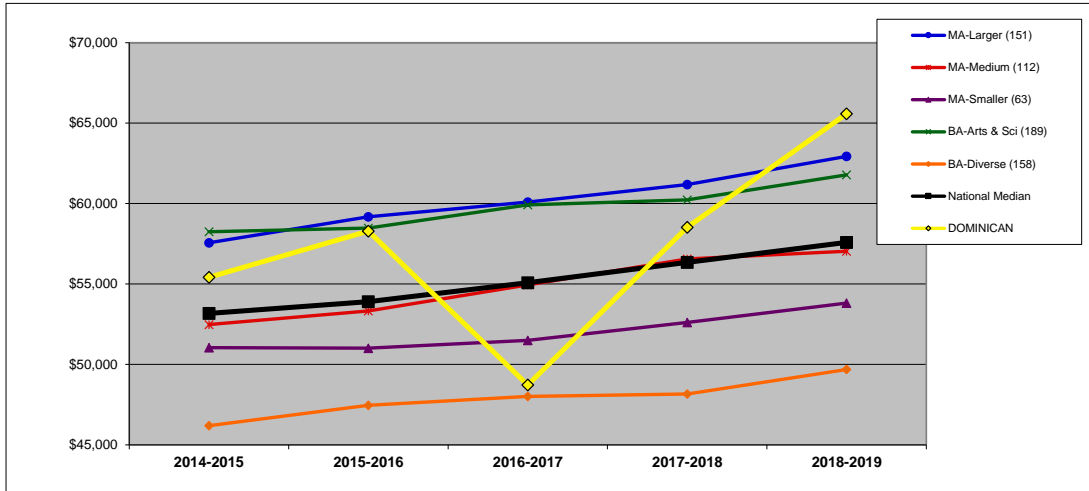
ASSISTANT PROFESSOR AVERAGE SALARY (\$): BY CARNEGIE CLASSIFICATION (8C)

DEFINITION: The average salary for assistant professors equated to a 9-month contract.

	2014-2015	2015-2016	2016-2017	2017-2018	2018-2019	Y1 to Y5 Change
DOMINICAN	\$ 55,413	\$ 58,284	\$ 48,720	\$ 58,526	\$ 65,581	18.3%

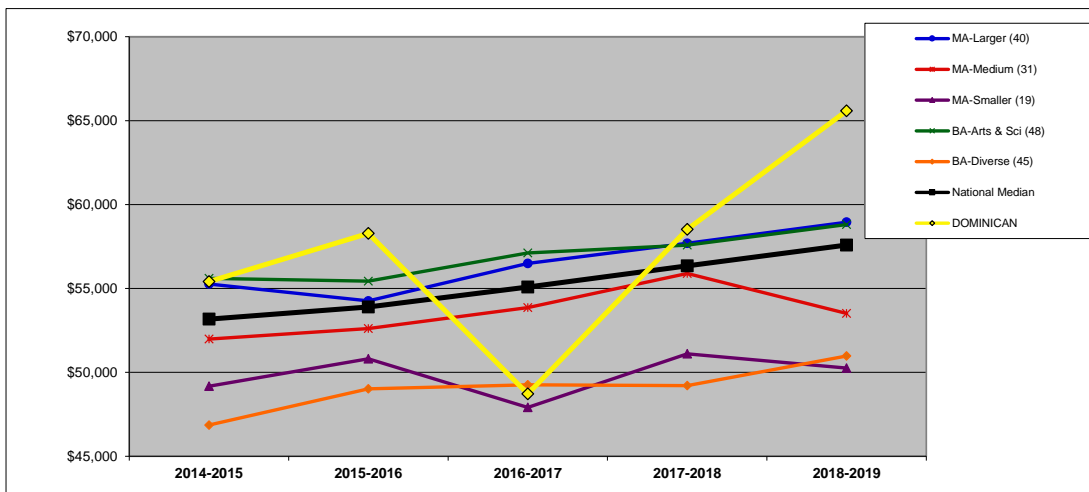
CARNEGIE MA-Larger

NATIONAL: CARNEGIE (n=673).



	2014-2015	2015-2016	2016-2017	2017-2018	2018-2019	Y1 to Y5 Change
MA-Larger (151)	\$ 57,564	\$ 59,175	\$ 60,088	\$ 61,188	\$ 62,935	9.3%
MA-Medium (112)	\$ 52,479	\$ 53,330	\$ 54,947	\$ 56,557	\$ 57,038	8.7%
MA-Smaller (63)	\$ 51,039	\$ 51,012	\$ 51,496	\$ 52,616	\$ 53,814	5.4%
BA-Arts & Sci (189)	\$ 58,248	\$ 58,482	\$ 59,915	\$ 60,226	\$ 61,786	6.1%
BA-Diverse (158)	\$ 46,193	\$ 47,466	\$ 48,009	\$ 48,166	\$ 49,685	7.6%
National Median	\$ 53,172	\$ 53,901	\$ 55,084	\$ 56,352	\$ 57,587	8.3%
DOMINICAN	\$ 55,413	\$ 58,284	\$ 48,720	\$ 58,526	\$ 65,581	18.3%

MIDWEST REGION: CARNEGIE (n=183).



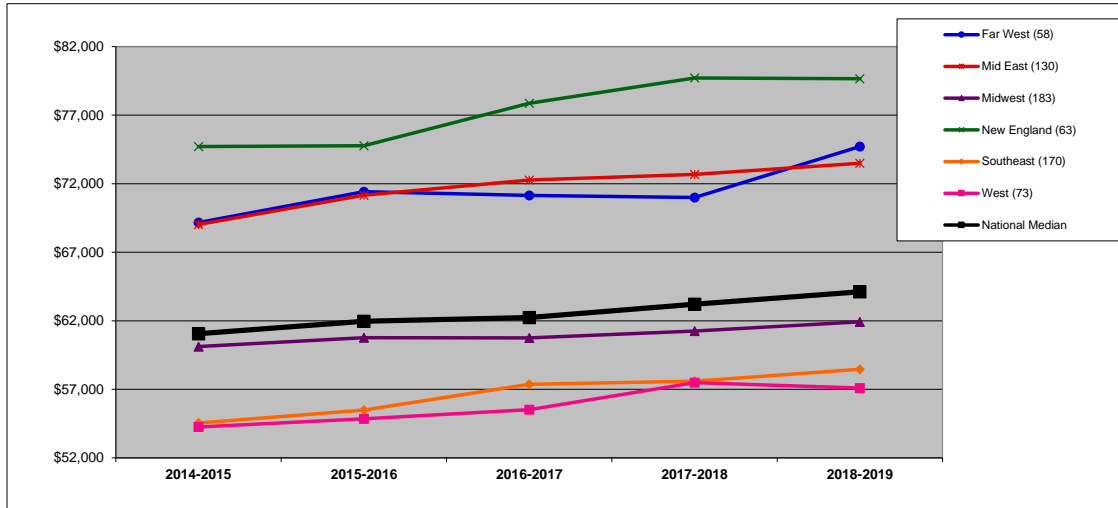
	2014-2015	2015-2016	2016-2017	2017-2018	2018-2019	Y1 to Y5 Change
MA-Larger (40)	\$ 55,265	\$ 54,261	\$ 56,493	\$ 57,696	\$ 58,948	6.7%
MA-Medium (31)	\$ 51,984	\$ 52,614	\$ 53,859	\$ 55,893	\$ 53,512	2.9%
MA-Smaller (19)	\$ 49,176	\$ 50,805	\$ 47,912	\$ 51,105	\$ 50,254	2.2%
BA-Arts & Sci (48)	\$ 55,607	\$ 55,436	\$ 57,112	\$ 57,585	\$ 58,807	5.8%
BA-Diverse (45)	\$ 46,863	\$ 49,014	\$ 49,264	\$ 49,210	\$ 50,977	8.8%
National Median	\$ 53,172	\$ 53,901	\$ 55,084	\$ 56,352	\$ 57,587	8.3%
DOMINICAN	\$ 55,413	\$ 58,284	\$ 48,720	\$ 58,526	\$ 65,581	18.3%

ASSOCIATE PROFESSOR AVERAGE SALARY (\$): BY REGION (9R)

DEFINITION: The average salary for associate professors equated to a 9-month contract.

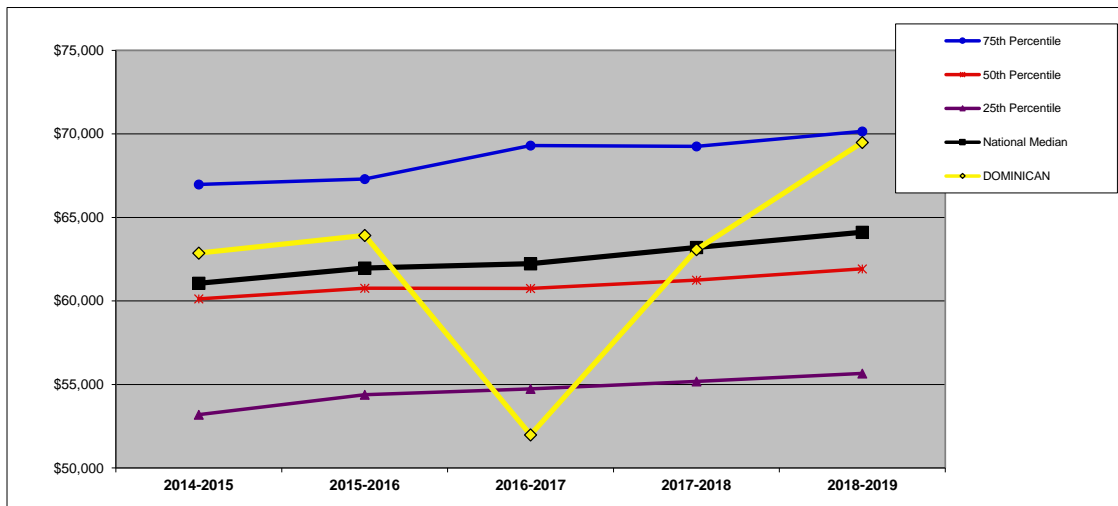
	2014-2015	2015-2016	2016-2017	2017-2018	2018-2019	Y1 to Y5 Change
DOMINICAN	\$ 62,865	\$ 63,927	\$ 51,984	\$ 63,073	\$ 69,494	10.5%

NATIONAL (n=677). All data on this chart are presented as medians. See Introduction for description of regions.



	2014-2015	2015-2016	2016-2017	2017-2018	2018-2019	Y1 to Y5 Change
Far West (58)	\$ 69,165	\$ 71,415	\$ 71,139	\$ 70,988	\$ 74,712	8.0%
Mid East (130)	\$ 69,026	\$ 71,163	\$ 72,273	\$ 72,683	\$ 73,491	6.5%
Midwest (183)	\$ 60,120	\$ 60,759	\$ 60,754	\$ 61,249	\$ 61,924	3.0%
New England (63)	\$ 74,709	\$ 74,772	\$ 77,868	\$ 79,712	\$ 79,656	6.6%
Southeast (170)	\$ 54,541	\$ 55,490	\$ 57,364	\$ 57,598	\$ 58,464	7.2%
West (73)	\$ 54,252	\$ 54,846	\$ 55,518	\$ 57,485	\$ 57,092	5.2%
National Median	\$ 61,056	\$ 61,965	\$ 62,235	\$ 63,201	\$ 64,114	5.0%

MIDWEST REGION (n=183). In addition to the median, which is the 50th percentile, this chart shows the 75th and 25th percentiles for the region.



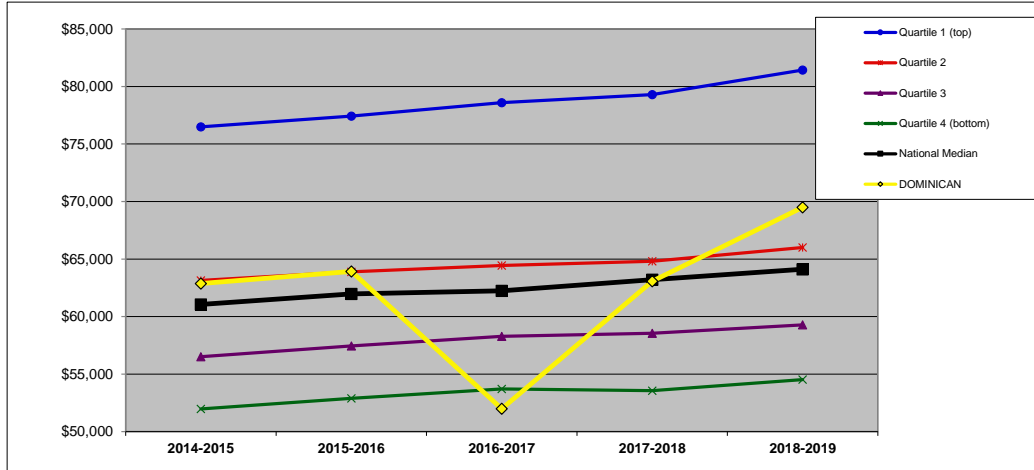
	2014-2015	2015-2016	2016-2017	2017-2018	2018-2019	Y1 to Y5 Change
75th Percentile	\$ 66,974	\$ 67,302	\$ 69,302	\$ 69,255	\$ 70,155	4.8%
50th Percentile	\$ 60,120	\$ 60,759	\$ 60,754	\$ 61,249	\$ 61,924	3.0%
25th Percentile	\$ 53,192	\$ 54,378	\$ 54,729	\$ 55,181	\$ 55,660	4.6%
National Median	\$ 61,056	\$ 61,965	\$ 62,235	\$ 63,201	\$ 64,114	5.0%
DOMINICAN	\$ 62,865	\$ 63,927	\$ 51,984	\$ 63,073	\$ 69,494	10.5%

ASSOCIATE PROFESSOR AVERAGE SALARY (\$): BY FINANCIAL RESOURCES (9F)

DEFINITION: The average salary for associate professors equated to a 9-month contract. See Introduction for description of Carnegie classifications. (All national and regional data are presented as medians.)

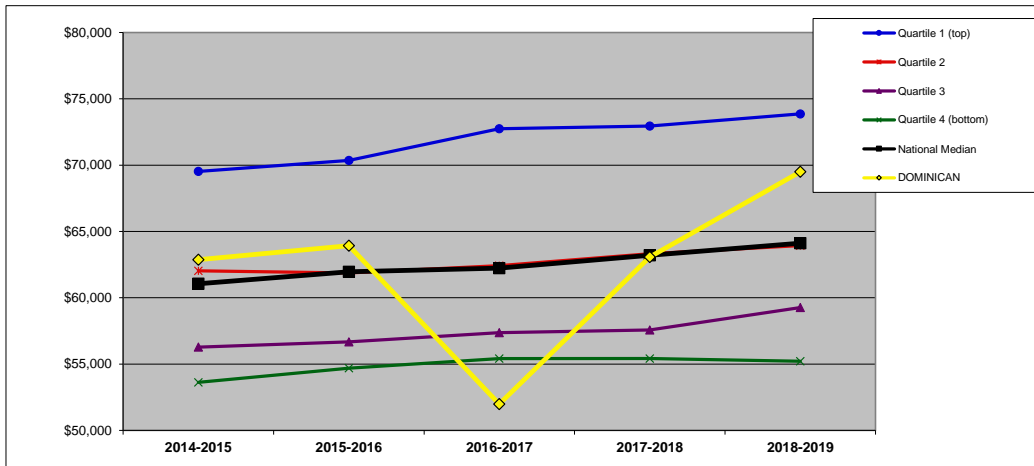
	2014-2015	2015-2016	2016-2017	2017-2018	2018-2019	Y1 to Y5 Change	QUARTILES	
	DOMINICAN	\$ 62,865	\$ 63,927	\$ 51,984	\$ 63,073	\$ 69,494	10.5%	NATIONAL
							REGIONAL	2

NATIONAL: FINANCIAL RESOURCES (n=674).



	2014-2015	2015-2016	2016-2017	2017-2018	2018-2019	Y1 to Y5 Change
Quartile 1 (top)	\$ 76,491	\$ 77,427	\$ 78,596	\$ 79,294	\$ 81,429	6.5%
Quartile 2	\$ 63,144	\$ 63,891	\$ 64,441	\$ 64,810	\$ 66,004	4.5%
Quartile 3	\$ 56,511	\$ 57,443	\$ 58,277	\$ 58,543	\$ 59,278	4.9%
Quartile 4 (bottom)	\$ 51,971	\$ 52,898	\$ 53,707	\$ 53,566	\$ 54,522	4.9%
National Median	\$ 61,056	\$ 61,965	\$ 62,235	\$ 63,201	\$ 64,114	5.0%
DOMINICAN	\$ 62,865	\$ 63,927	\$ 51,984	\$ 63,073	\$ 69,494	10.5%

MIDWEST REGION: FINANCIAL RESOURCES (n=181).



	2014-2015	2015-2016	2016-2017	2017-2018	2018-2019	Y1 to Y5 Change
Quartile 1 (top)	\$ 69,525	\$ 70,349	\$ 72,739	\$ 72,945	\$ 73,866	6.2%
Quartile 2	\$ 62,037	\$ 61,871	\$ 62,417	\$ 63,319	\$ 63,935	3.1%
Quartile 3	\$ 56,277	\$ 56,669	\$ 57,365	\$ 57,569	\$ 59,261	5.3%
Quartile 4 (bottom)	\$ 53,622	\$ 54,693	\$ 55,418	\$ 55,421	\$ 55,215	3.0%
National Median	\$ 61,056	\$ 61,965	\$ 62,235	\$ 63,201	\$ 64,114	5.0%
DOMINICAN	\$ 62,865	\$ 63,927	\$ 51,984	\$ 63,073	\$ 69,494	10.5%

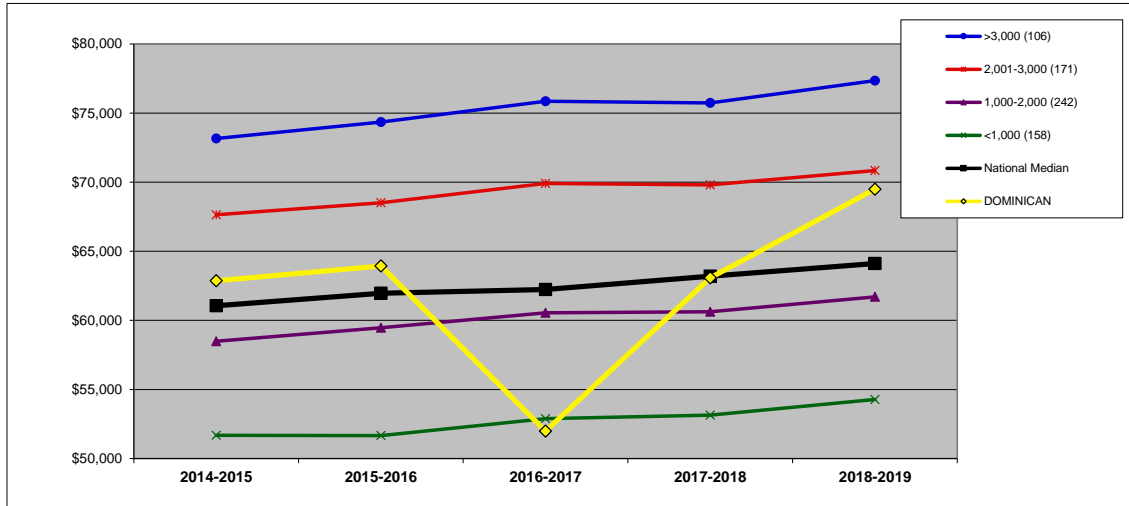
ASSOCIATE PROFESSOR AVERAGE SALARY (\$): BY ENROLLMENT SIZE (9S)

DEFINITION: The average salary for associate professors equated to a 9-month contract. See Introduction for description of Carnegie classifications. (All national and regional data are presented as medians.)

	2014-2015	2015-2016	2016-2017	2017-2018	2018-2019	Y1 to Y5 Change
DOMINICAN	\$ 62,865	\$ 63,927	\$ 51,984	\$ 63,073	\$ 69,494	10.5%

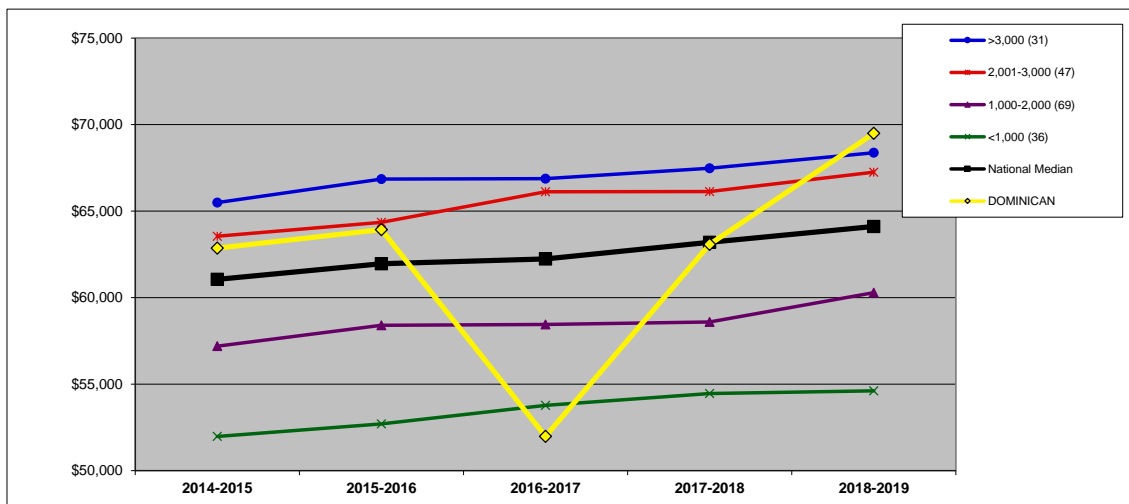
SIZE 2,001-3,000

NATIONAL: SIZE (n=677).



	2014-2015	2015-2016	2016-2017	2017-2018	2018-2019	Y1 to Y5 Change
>3,000 (106)	\$ 73,161	\$ 74,349	\$ 75,854	\$ 75,729	\$ 77,351	5.7%
2,001-3,000 (171)	\$ 67,644	\$ 68,508	\$ 69,904	\$ 69,805	\$ 70,842	4.7%
1,000-2,000 (242)	\$ 58,489	\$ 59,459	\$ 60,555	\$ 60,623	\$ 61,700	5.5%
<1,000 (158)	\$ 51,678	\$ 51,660	\$ 52,882	\$ 53,146	\$ 54,276	5.0%
National Median	\$ 61,056	\$ 61,965	\$ 62,235	\$ 63,201	\$ 64,114	5.0%
DOMINICAN	\$ 62,865	\$ 63,927	\$ 51,984	\$ 63,073	\$ 69,494	10.5%

MIDWEST REGION: SIZE (n=183).



	2014-2015	2015-2016	2016-2017	2017-2018	2018-2019	Y1 to Y5 Change
>3,000 (31)	\$ 65,493	\$ 66,852	\$ 66,880	\$ 67,481	\$ 68,375	4.4%
2,001-3,000 (47)	\$ 63,549	\$ 64,350	\$ 66,116	\$ 66,135	\$ 67,252	5.8%
1,000-2,000 (69)	\$ 57,195	\$ 58,401	\$ 58,445	\$ 58,592	\$ 60,288	5.4%
<1,000 (36)	\$ 51,975	\$ 52,700	\$ 53,769	\$ 54,462	\$ 54,613	5.1%
National Median	\$ 61,056	\$ 61,965	\$ 62,235	\$ 63,201	\$ 64,114	5.0%
DOMINICAN	\$ 62,865	\$ 63,927	\$ 51,984	\$ 63,073	\$ 69,494	10.5%

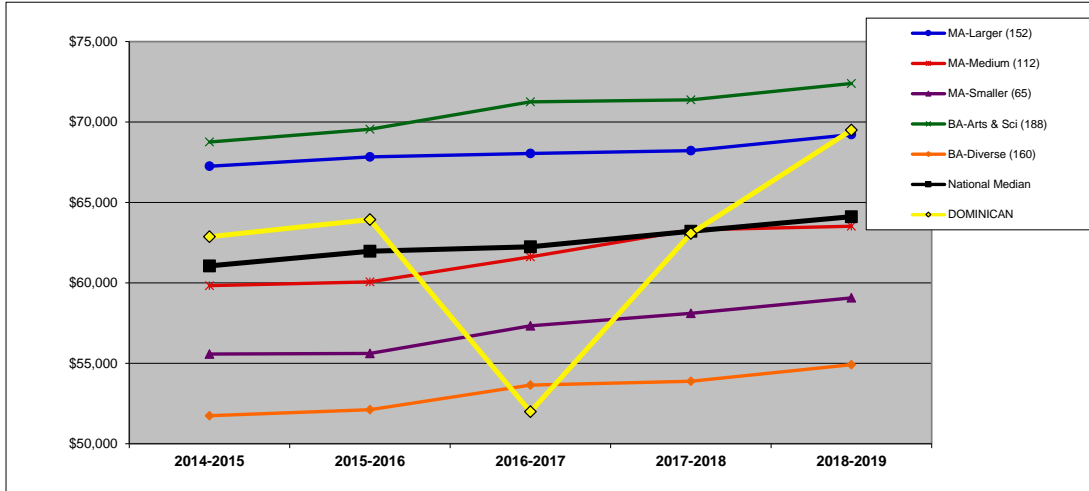
ASSOCIATE PROFESSOR AVERAGE SALARY (\$): BY CARNEGIE CLASSIFICATION (9C)

DEFINITION: The average salary for associate professors equated to a 9-month contract. See Introduction for description of Carnegie classifications. (All national and regional data are presented as medians.)

	2014-2015	2015-2016	2016-2017	2017-2018	2018-2019	Change
DOMINICAN	\$ 62,865	\$ 63,927	\$ 51,984	\$ 63,073	\$ 69,494	10.5%

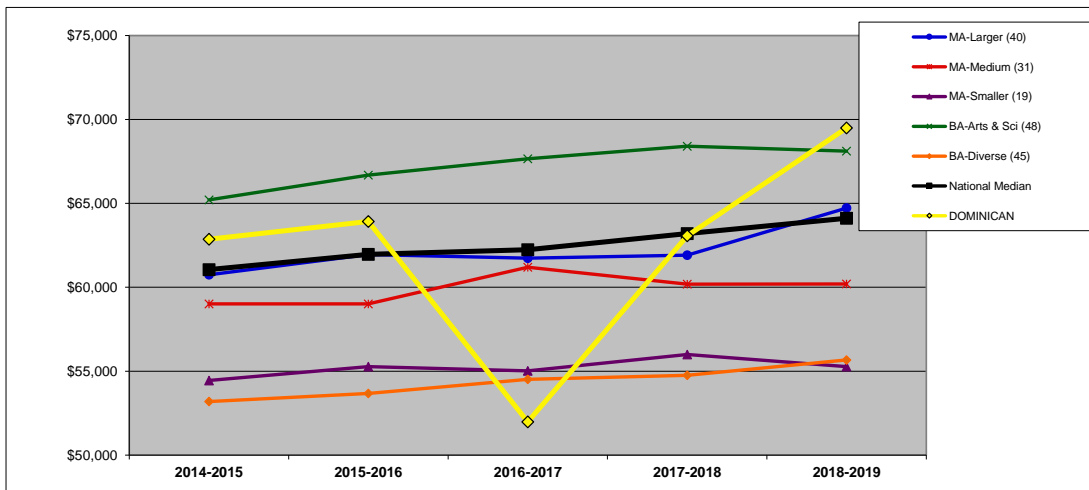
CARNEGIE MA-Larger

NATIONAL: CARNEGIE (n=677).



	2014-2015	2015-2016	2016-2017	2017-2018	2018-2019	Y1 to Y5 Change
MA-Larger (152)	\$ 67,248	\$ 67,829	\$ 68,048	\$ 68,225	\$ 69,217	2.9%
MA-Medium (112)	\$ 59,828	\$ 60,062	\$ 61,608	\$ 63,290	\$ 63,519	6.2%
MA-Smaller (65)	\$ 55,575	\$ 55,611	\$ 57,330	\$ 58,107	\$ 59,064	6.3%
BA-Arts & Sci (188)	\$ 68,756	\$ 69,552	\$ 71,255	\$ 71,383	\$ 72,394	5.3%
BA-Diverse (160)	\$ 51,741	\$ 52,119	\$ 53,640	\$ 53,887	\$ 54,914	6.1%
National Median	\$ 61,056	\$ 61,965	\$ 62,235	\$ 63,201	\$ 64,114	5.0%
DOMINICAN	\$ 62,865	\$ 63,927	\$ 51,984	\$ 63,073	\$ 69,494	10.5%

MIDWEST REGION: CARNEGIE (n=183).



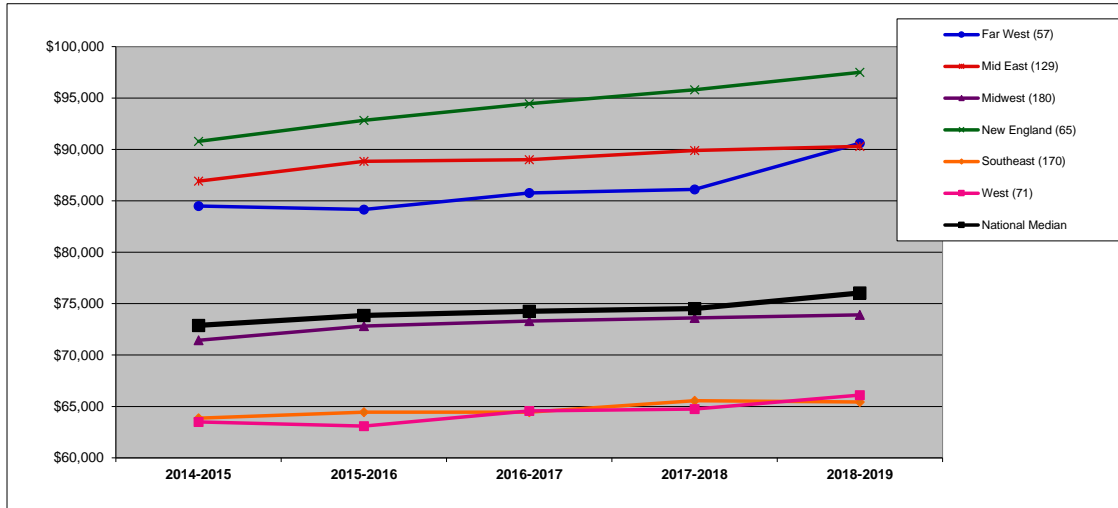
	2014-2015	2015-2016	2016-2017	2017-2018	2018-2019	Y1 to Y5 Change
MA-Larger (40)	\$ 60,746	\$ 61,956	\$ 61,732	\$ 61,920	\$ 64,721	6.5%
MA-Medium (31)	\$ 59,013	\$ 59,013	\$ 61,196	\$ 60,183	\$ 60,202	2.0%
MA-Smaller (19)	\$ 54,450	\$ 55,269	\$ 55,022	\$ 55,997	\$ 55,275	1.5%
BA-Arts & Sci (48)	\$ 65,210	\$ 66,681	\$ 67,654	\$ 68,407	\$ 68,108	4.4%
BA-Diverse (45)	\$ 53,193	\$ 53,672	\$ 54,515	\$ 54,754	\$ 55,673	4.7%
National Median	\$ 61,056	\$ 61,965	\$ 62,235	\$ 63,201	\$ 64,114	5.0%
DOMINICAN	\$ 62,865	\$ 63,927	\$ 51,984	\$ 63,073	\$ 69,494	10.5%

FULL PROFESSOR AVERAGE SALARY (\$): BY REGION (10R)

DEFINITION: The average salary for full professors equated to a 9-month contract.

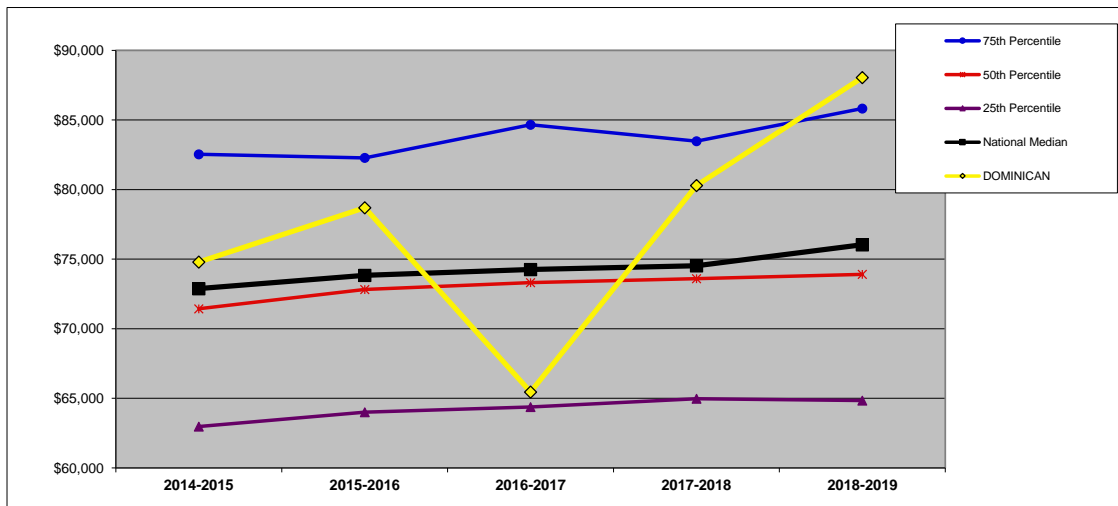
	2014-2015	2015-2016	2016-2017	2017-2018	2018-2019	Y1 to Y5 Change
DOMINICAN	\$ 74,790	\$ 78,696	\$ 65,460	\$ 80,289	\$ 88,050	17.7%

NATIONAL (n=672). All data on this chart are presented as medians. See Introduction for description of regions.



	2014-2015	2015-2016	2016-2017	2017-2018	2018-2019	Y1 to Y5 Change
Far West (57)	\$ 84,492	\$ 84,159	\$ 85,767	\$ 86,102	\$ 90,603	7.2%
Mid East (129)	\$ 86,913	\$ 88,839	\$ 88,998	\$ 89,887	\$ 90,298	3.9%
Midwest (180)	\$ 71,438	\$ 72,819	\$ 73,315	\$ 73,601	\$ 73,907	3.5%
New England (65)	\$ 90,783	\$ 92,826	\$ 94,440	\$ 95,802	\$ 97,498	7.4%
Southeast (170)	\$ 63,860	\$ 64,445	\$ 64,451	\$ 65,560	\$ 65,443	2.5%
West (71)	\$ 63,486	\$ 63,090	\$ 64,561	\$ 64,745	\$ 66,107	4.1%
National Median	\$ 72,887	\$ 73,845	\$ 74,260	\$ 74,528	\$ 76,039	4.3%

MIDWEST REGION (n=180). In addition to the median, which is the 50th percentile, this chart shows the 75th and 25th percentiles for the region.



	2014-2015	2015-2016	2016-2017	2017-2018	2018-2019	Y1 to Y5 Change
75th Percentile	\$ 82,535	\$ 82,276	\$ 84,652	\$ 83,480	\$ 85,826	4.0%
50th Percentile	\$ 71,438	\$ 72,819	\$ 73,315	\$ 73,601	\$ 73,907	3.5%
25th Percentile	\$ 62,975	\$ 64,006	\$ 64,372	\$ 64,972	\$ 64,841	3.0%
National Median	\$ 72,887	\$ 73,845	\$ 74,260	\$ 74,528	\$ 76,039	4.3%
DOMINICAN	\$ 74,790	\$ 78,696	\$ 65,460	\$ 80,289	\$ 88,050	17.7%

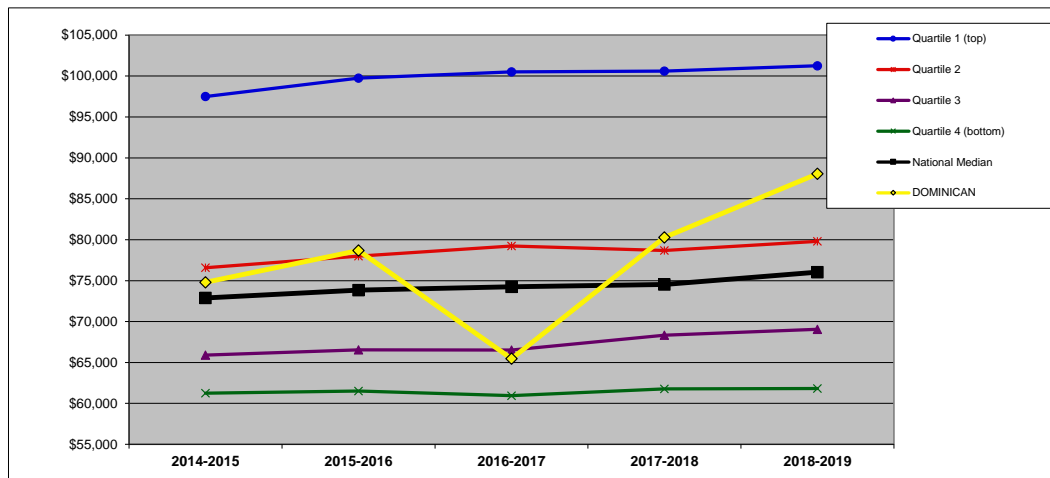
FULL PROFESSOR AVERAGE SALARY (\$): BY FINANCIAL RESOURCES (10F)

DEFINITION: The average salary for full professors equated to a 9-month contract. See Introduction for description of Carnegie classifications. (All national and regional data are presented as medians.)

	2014-2015	2015-2016	2016-2017	2017-2018	2018-2019	Y1 to Y5 Change
DOMINICAN	\$ 74,790	\$ 78,696	\$ 65,460	\$ 80,289	\$ 88,050	17.7%

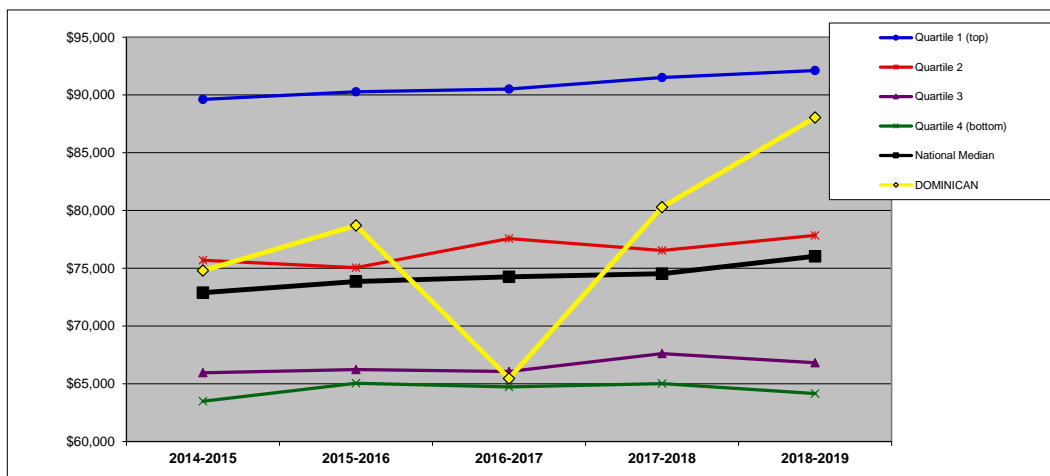
QUARTILES	
NATIONAL	2
REGIONAL	2

NATIONAL: FINANCIAL RESOURCES (n=669).



	2014-2015	2015-2016	2016-2017	2017-2018	2018-2019	Y1 to Y5 Change
Quartile 1 (top)	\$ 97,497	\$ 99,738	\$ 100,510	\$ 100,610	\$ 101,263	3.9%
Quartile 2	\$ 76,577	\$ 77,990	\$ 79,239	\$ 78,690	\$ 79,803	4.2%
Quartile 3	\$ 65,903	\$ 66,551	\$ 66,524	\$ 68,333	\$ 69,058	4.8%
Quartile 4 (bottom)	\$ 61,259	\$ 61,506	\$ 60,949	\$ 61,772	\$ 61,820	0.9%
National Median	\$ 72,887	\$ 73,845	\$ 74,260	\$ 74,528	\$ 76,039	4.3%
DOMINICAN	\$ 74,790	\$ 78,696	\$ 65,460	\$ 80,289	\$ 88,050	17.7%

MIDWEST REGION: FINANCIAL RESOURCES (n=179).



	2014-2015	2015-2016	2016-2017	2017-2018	2018-2019	Y1 to Y5 Change
Quartile 1 (top)	\$ 89,618	\$ 90,275	\$ 90,514	\$ 91,516	\$ 92,116	2.8%
Quartile 2	\$ 75,699	\$ 75,051	\$ 77,562	\$ 76,531	\$ 77,845	2.8%
Quartile 3	\$ 65,952	\$ 66,222	\$ 66,053	\$ 67,610	\$ 66,828	1.3%
Quartile 4 (bottom)	\$ 63,486	\$ 65,043	\$ 64,725	\$ 65,018	\$ 64,155	1.1%
National Median	\$ 72,887	\$ 73,845	\$ 74,260	\$ 74,528	\$ 76,039	4.3%
DOMINICAN	\$ 74,790	\$ 78,696	\$ 65,460	\$ 80,289	\$ 88,050	17.7%

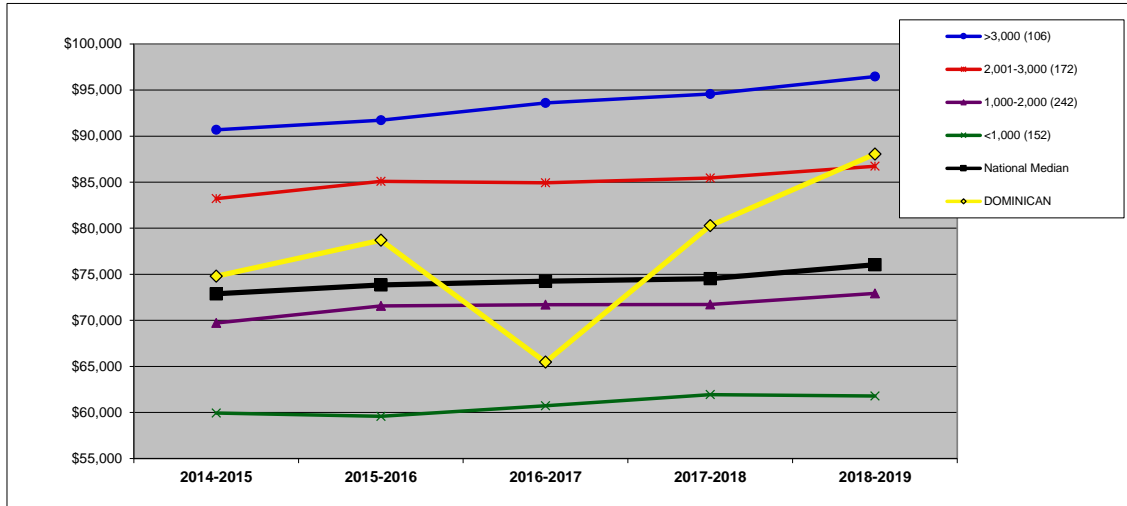
FULL PROFESSOR AVERAGE SALARY (\$): BY ENROLLMENT SIZE (10S)

DEFINITION: The average salary for full professors equated to a 9-month contract. See Introduction for description of Carnegie classifications. (All national and regional data are presented as medians.)

	2014-2015	2015-2016	2016-2017	2017-2018	2018-2019	Y1 to Y5 Change
DOMINICAN	\$ 74,790	\$ 78,696	\$ 65,460	\$ 80,289	\$ 88,050	17.7%

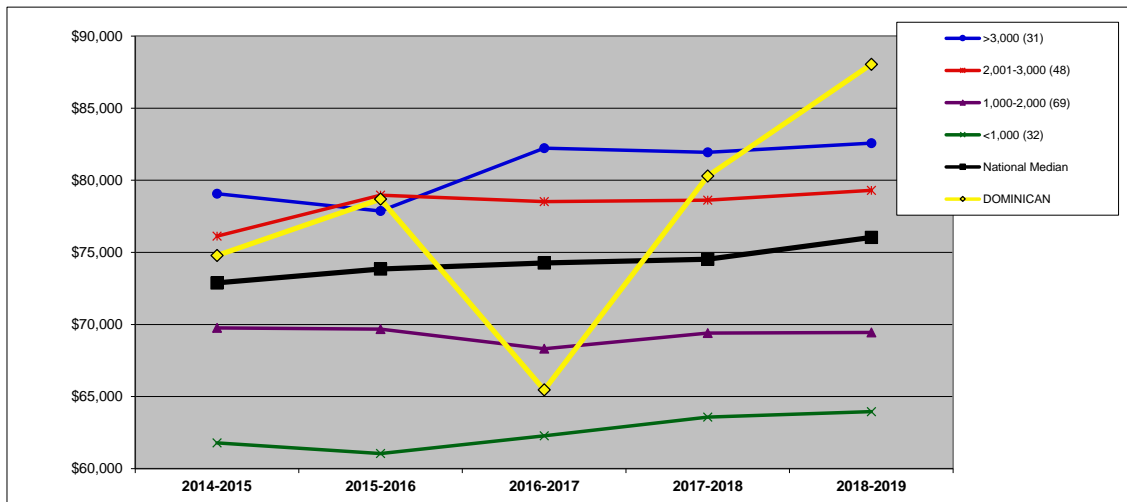
SIZE 2,001-3,000

NATIONAL: SIZE (n=672).



	2014-2015	2015-2016	2016-2017	2017-2018	2018-2019	Y1 to Y5 Change
>3,000 (106)	\$ 90,684	\$ 91,724	\$ 93,594	\$ 94,572	\$ 96,465	6.4%
2,001-3,000 (172)	\$ 83,214	\$ 85,086	\$ 84,926	\$ 85,456	\$ 86,729	4.2%
1,000-2,000 (242)	\$ 69,715	\$ 71,568	\$ 71,701	\$ 71,714	\$ 72,929	4.6%
<1,000 (152)	\$ 59,927	\$ 59,585	\$ 60,738	\$ 61,938	\$ 61,800	3.1%
National Median	\$ 72,887	\$ 73,845	\$ 74,260	\$ 74,528	\$ 76,039	4.3%
DOMINICAN	\$ 74,790	\$ 78,696	\$ 65,460	\$ 80,289	\$ 88,050	17.7%

MIDWEST REGION: SIZE (n=180).



	2014-2015	2015-2016	2016-2017	2017-2018	2018-2019	Y1 to Y5 Change
>3,000 (31)	\$ 79,074	\$ 77,868	\$ 82,226	\$ 81,943	\$ 82,578	4.4%
2,001-3,000 (48)	\$ 76,127	\$ 78,971	\$ 78,516	\$ 78,616	\$ 79,304	4.2%
1,000-2,000 (69)	\$ 69,760	\$ 69,678	\$ 68,316	\$ 69,396	\$ 69,444	-0.5%
<1,000 (32)	\$ 61,785	\$ 61,047	\$ 62,271	\$ 63,580	\$ 63,956	3.5%
National Median	\$ 72,887	\$ 73,845	\$ 74,260	\$ 74,528	\$ 76,039	4.3%
DOMINICAN	\$ 74,790	\$ 78,696	\$ 65,460	\$ 80,289	\$ 88,050	17.7%

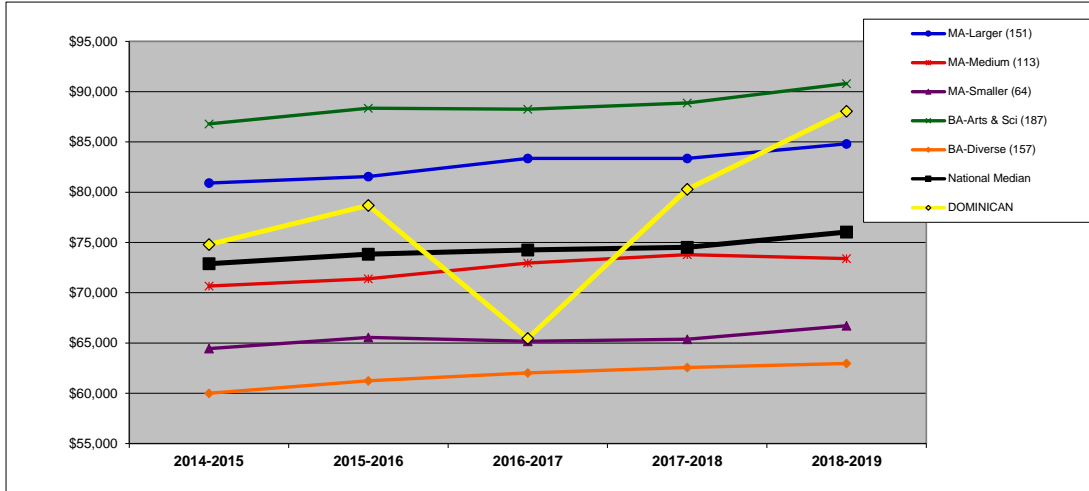
FULL PROFESSOR AVERAGE SALARY (\$): BY CARNEGIE CLASSIFICATION (10C)

DEFINITION: The average salary for full professors equated to a 9-month contract. See Introduction for description of Carnegie classifications. (All national and regional data are presented as medians.)

	2014-2015	2015-2016	2016-2017	2017-2018	2018-2019	Y1 to Y5 Change
DOMINICAN	\$ 74,790	\$ 78,696	\$ 65,460	\$ 80,289	\$ 88,050	17.7%

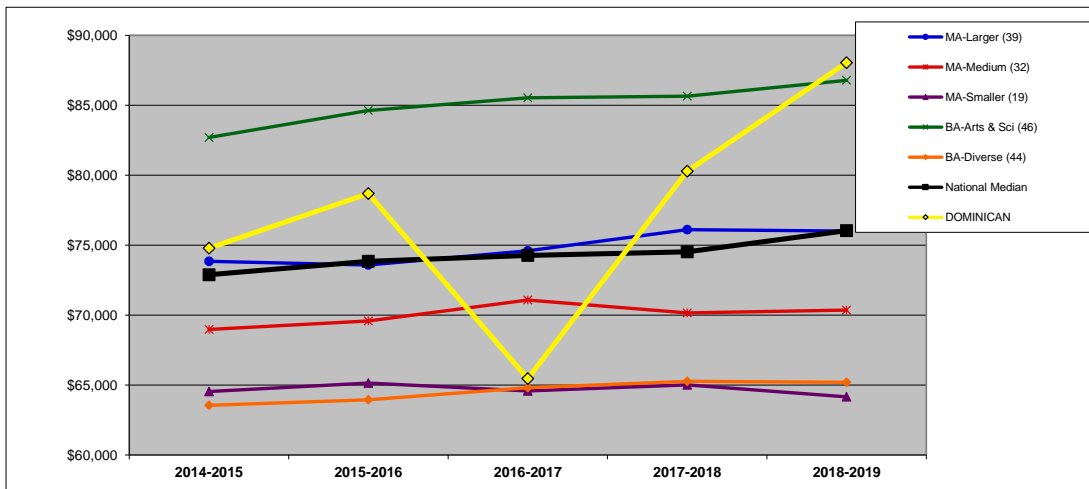
CARNEGIE MA-Larger

NATIONAL: CARNEGIE (n=672).



	2014-2015	2015-2016	2016-2017	2017-2018	2018-2019	Y1 to Y5 Change
MA-Larger (151)	\$ 80,910	\$ 81,558	\$ 83,355	\$ 83,357	\$ 84,815	4.8%
MA-Medium (113)	\$ 70,668	\$ 71,388	\$ 72,955	\$ 73,788	\$ 73,397	3.9%
MA-Smaller (64)	\$ 64,445	\$ 65,556	\$ 65,181	\$ 65,378	\$ 66,719	3.5%
BA-Arts & Sci (187)	\$ 86,796	\$ 88,362	\$ 88,260	\$ 88,883	\$ 90,809	4.6%
BA-Diverse (157)	\$ 60,003	\$ 61,236	\$ 62,025	\$ 62,571	\$ 62,964	4.9%
National Median	\$ 72,887	\$ 73,845	\$ 74,260	\$ 74,528	\$ 76,039	4.3%
DOMINICAN	\$ 74,790	\$ 78,696	\$ 65,460	\$ 80,289	\$ 88,050	17.7%

MIDWEST REGION: CARNEGIE (n=180).



	2014-2015	2015-2016	2016-2017	2017-2018	2018-2019	Y1 to Y5 Change
MA-Larger (39)	\$ 73,854	\$ 73,584	\$ 74,590	\$ 76,110	\$ 76,009	2.9%
MA-Medium (32)	\$ 68,976	\$ 69,588	\$ 71,078	\$ 70,158	\$ 70,358	2.0%
MA-Smaller (19)	\$ 64,530	\$ 65,142	\$ 64,573	\$ 65,018	\$ 64,155	-0.6%
BA-Arts & Sci (46)	\$ 82,702	\$ 84,636	\$ 85,532	\$ 85,657	\$ 86,786	4.9%
BA-Diverse (44)	\$ 63,549	\$ 63,941	\$ 64,809	\$ 65,264	\$ 65,196	2.6%
National Median	\$ 72,887	\$ 73,845	\$ 74,260	\$ 74,528	\$ 76,039	4.3%
DOMINICAN	\$ 74,790	\$ 78,696	\$ 65,460	\$ 80,289	\$ 88,050	17.7%

DATA INFORMATION: DEFINITIONS, IPEDS SOURCES, AND FORMULAS

To use this appendix, visit <http://nces.ed.gov/ipeds/datacenter/> and follow these steps:

- select "Compare Institutions"
- select "Use provisional release data"
- enter your institution's name
- select "Continue" to see variables

1) TOTAL FALL ENROLLMENT

Definition: Total fall full-time equivalent (FTE) enrollment, including undergraduate, graduate, and first-professional students.

IPEDS: Frequently used/Derived variables
Fall enrollment/retention rates
Total, full- and part-time enrollment and fall FTE
Full-time equivalent enrollment (Fall enrollment derivation)

2) FIRST-YEAR ENROLLMENT

Definition: Total fall full-time, first-time degree-seeking undergraduate students.

IPEDS: Fall Enrollment
Gender, attendance status, and level of student
Fall 1980, Fall 1984 to current year
Qualifying variable: First time
Full time total

3) ADMISSIONS YIELD RATE (%)

Definition: Percentage of admitted students who enrolled. (The year indicated is the year of the Institutional Characteristics IPEDS Survey. Institutions had the option of reporting data for the current or prior year. Only data from institutions reporting current year data for all five years were used in the comparisons.)

IPEDS: Admissions and Test Scores
Admissions and test scores
Number of applications, admissions, and enrollees
Admissions total
Enrolled total

Formula:
$$\frac{\text{Enrolled total}}{\text{Admissions total}}$$

4) RETENTION RATE (%)

Definition: The first to second year retention rate is the percentage of the fall full-time cohort (minus exclusions) that re-enrolled at the institution as either full- or part-time students in the fall of the next year.

IPEDS: Retention rates, Entering Class and Student to faculty ratio
Retention rates
Fall 2003 to current year
Full-time retention rate

5) GRADUATION RATE (%)

Definition: The six-year, cohort graduation rate for full-time, first-time degree-seeking undergraduate students. For example, the Fall 2012 Cohort rate is the percentage that graduated by end of Summer 2018.

IPEDS: Graduation Rates
Graduation rate data within 150 percent of normal time - 4-year and 2-year institutions
Gender - 1997 to current year
Qualifying variables: Bachelor's or equivalent degree/certificate-seeking subcohort (4-year institutions); select both Adjusted cohort (revised cohort minus exclusions) and Completers within 150% of normal time total
Grand total

Formula:
$$\frac{\text{Completers within 150\% of normal time}}{\text{Adjusted Cohort (revised cohort minus exclusions)}}$$

6) STUDENT/FACULTY RATIO

Definition: Total 12-month student FTE (undergraduate, graduate, and first-professional) divided by instructional faculty FTE.

IPEDS: Human Resources
Full- and part-time medical and non-medical staff by occupational category, faculty and tenure status
New HR occupational categories based on SOC 2010
Qualifying variable: Instructional staff, primarily instruction
Full-time employees
Part-time employees

Frequently used/Derived variables
12-month enrollment
12-month full-time equivalent enrollment

Formula:
$$\frac{12\text{-month FTE}}{\text{FT Instructional Faculty} + (\text{PT Instructional Faculty} / 3)}$$

7) PART-TIME FACULTY (%)

Definition: Full-time equivalent (FTE) for part-time instructional faculty as a percentage of total instructional faculty FTE.

IPEDS: Human Resources
Full- and part-time medical and non-medical staff by occupational category, faculty and tenure status
New HR occupational categories based on SOC 2010
Qualifying variable: Instructional staff, primarily instruction
Full-time employees
Part-time employees

Formula:
$$\frac{(\text{PT Instructional staff} / 3)}{\text{FT Instructional staff} + (\text{PT Instructional staff} / 3)}$$

8) ASSISTANT PROFESSOR AVERAGE SALARY (\$)

Definition: The average salary for assistant professors equated to a 9-month contract.

IPEDS: Frequently used/Derived variables
Average salaries and full-time equivalent staff
Average salaries of full-time non-medical instructional staff equated to 9-month contracts, by academic rank: 2012-13 to current year
Average salary equated to 9 months of full-time instructional staff - assistant professors

9) ASSOCIATE PROFESSOR AVERAGE SALARY (\$)

Definition: The average salary for associate professors equated to a 9-month contract.

IPEDS: Frequently used/Derived variables

Average salaries and full-time equivalent staff

Average salaries of full-time non-medical instructional staff equated to 9-month contracts, by academic rank: 2012-13 to current year

Average salary equated to 9 months of full-time instructional staff - associate professors

10) FULL PROFESSOR AVERAGE SALARY (\$)

Definition: The average salary for full professors equated to a 9-month contract.

IPEDS: Frequently used/Derived variables

Average salaries and full-time equivalent staff

Average salaries of full-time non-medical instructional staff equated to 9-month contracts, by academic rank: 2012-13 to current year

Average salary equated to 9 months of full-time instructional staff - professors