



DOMINICAN UNIVERSITY

Organizational Structure

November 2025



BOARD OF TRUSTEES

Glena Temple
President

PRESIDENT'S CABINET

Chief
Operating
Officer and
Senior Vice
President

CFO &
Senior V.P.
Finance &
Administrati
on and
Treasurer

Provost

V.P.
University
Advanceme
nt

Chicago
Campus
Executive
Officer &
VP

V.P. and
Chief
Information
Officer

V.P.
Enrollment
Manageme
nt

V.P.
Student
Success &
Engageme
nt

V.P. People
&
Organizatio
nal Culture

V. P. for
Justice,
Equity &
Inclusion

V.P.
Mission &
Ministry

AVP
Planning
and
Governmen
t Relations

Chief of
Staff

Office of the President

Glena Temple
President

Executive Administrative
Assistant

Chief of Staff

Special
Assistant to the
President for
Postbaccalaureate
Pathways in
Healthcare

Strategic
Advisor to the
President /
Assistant Men's
Golf Coach

Director of
Assessment,
Evaluation &
Achievement

Interim
Director of
DUPAC





Chicago Campus

Glena Temple
President

Barrington Price
Chicago Campus Executive
Officer

Executive
Director of
Academic
Affairs &
Special Asst to
CEO

Operations
Coordinator

Assistant
Director of
Admission

Manager of
Workforce
Operations and
Logistics

Clinical
Placement and
Program
Coordinator

Director of
Student
Success

Director of
Student
Experience

Mathematics
Learning
Specialist

Assistant
Director of
Basic Nursing
Assistant
Training

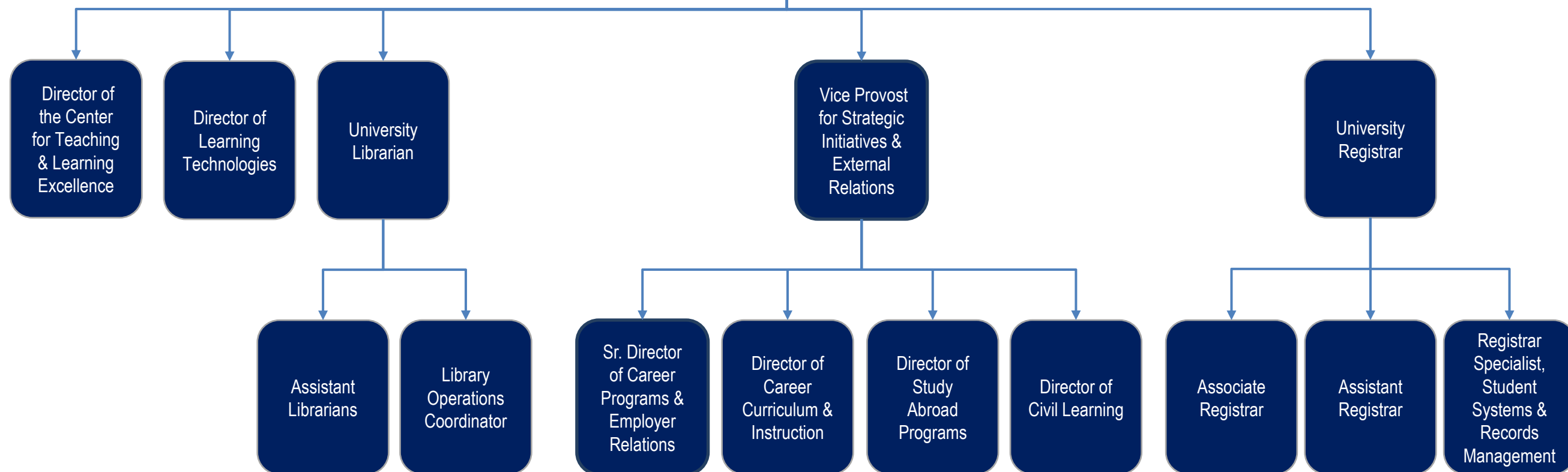


Office of the Provost

Glena Temple
President

Mia Hardy
Provost

Office Manager





Office of the Provost

Glena Temple
President

Mia Hardy
Provost

Dean of
Rosary
College
of Arts,
Education,
and Sciences

Dean
College of
Business,
Information
Studies, and
Technology

Dean of
Borra
College of
Health
Sciences

Associate
Provost

Director of
Institutional
Research

Director of
Catholic
School
Initiatives

Director of
Critical
Reading,
Writing and
Speaking

Rosary
College

School of
Education

Brennan
School of
Business

School of
Information
Studies

School of
Nursing

Physician
Assistant
Studies

Nutrition

Assistant
Provost

School of
Social
Work



University Advancement

Glena Temple
President

Tony Martinez, Jr.
Vice President
University Advancement

Associate Vice
President for
Advancement

Director of
Donor
Relations

Exec Director
of Planning,
Grants &
Foundation
Relations

Asst Vice
President of
Alumnae/i
& Community
Engagement

Director of
Major &
Planned Gifts

Director of
Advancement
Services

Director of
Alumnae/i
Relations

Director of
Annual Giving

Director of
Advancement
Communications



Enrollment Management, Athletics & Marketing

Glena Temple
President

Genaro A. Balcazar
Chief Operating Officer & Sr. Vice
President

Vice
President of
Enrollment
Management

Director of
Athletics

Assistant VP
of University
Marketing &
Brand
Integration



Enrollment Management

Glena Temple
President

Genaro A. Balcazar
Chief Operating Officer & Sr. Vice President

Jason Harmon
VP of Enrollment Management

Dean of 1st
Year
Admission

Executive
Director of
Financial
Aid &
Enrollment
Services

Director of
International
Enrollment &
Admissions
Student
Support

Exec. Dir of
Enrollment
Services &
Operations

Executive
Director of
Graduate,
Transfer &
Adult
Enrollment

Director of
Transfer
Admissions



Student Success & Engagement

Glena Temple
President

Gabe Lara
VP Student Success and Engagement

Interim
Director of
the Wellness
Center

Director of
Residence
Life

Asst VP for
Hispanic-
Serving &
Culturally
Sustaining
Initiatives

Director of
Student
Involvement

Senior
Director of
Student
Academic
Success

Director of
Advising

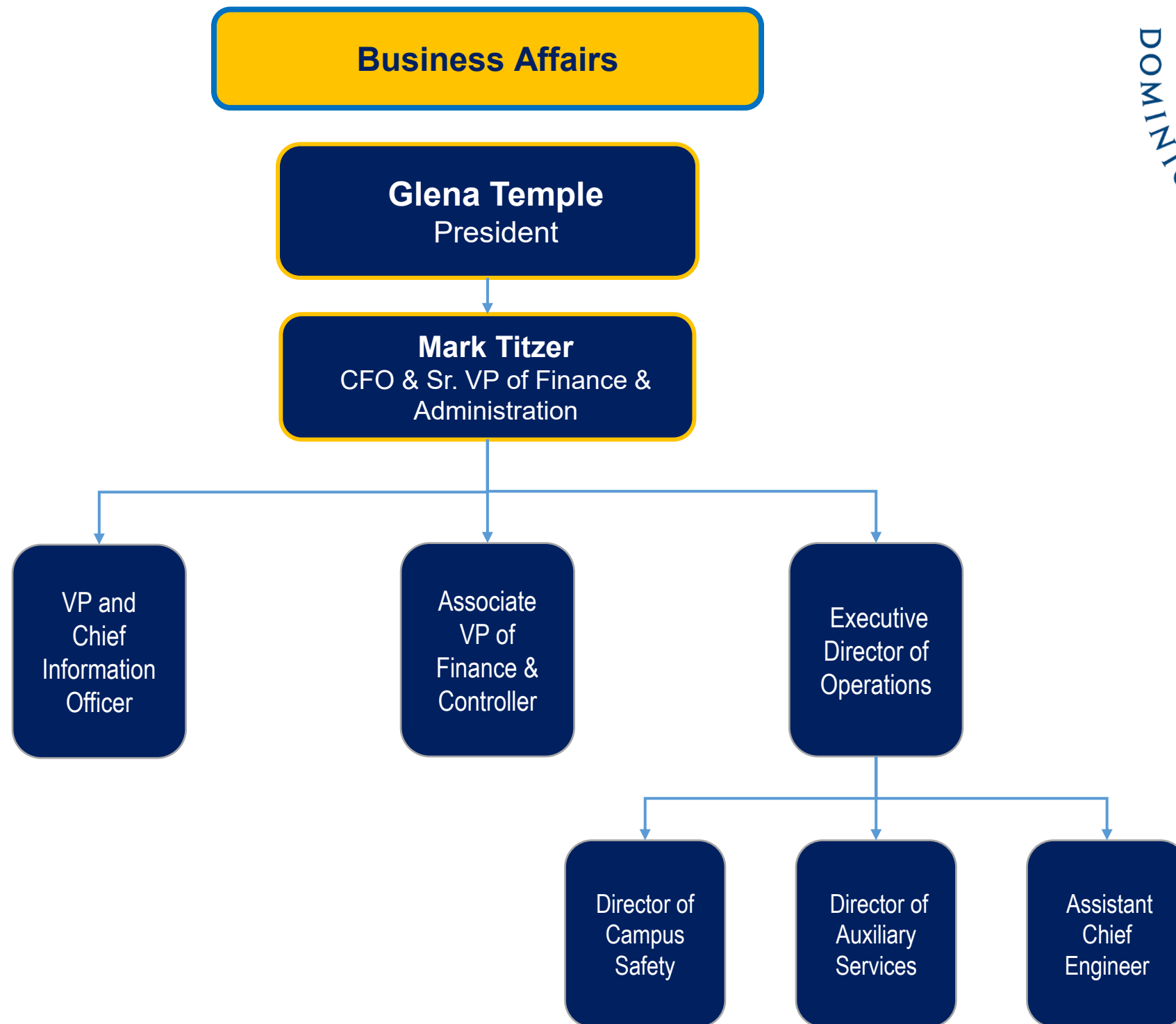
Director of
Student
Academic
Advising

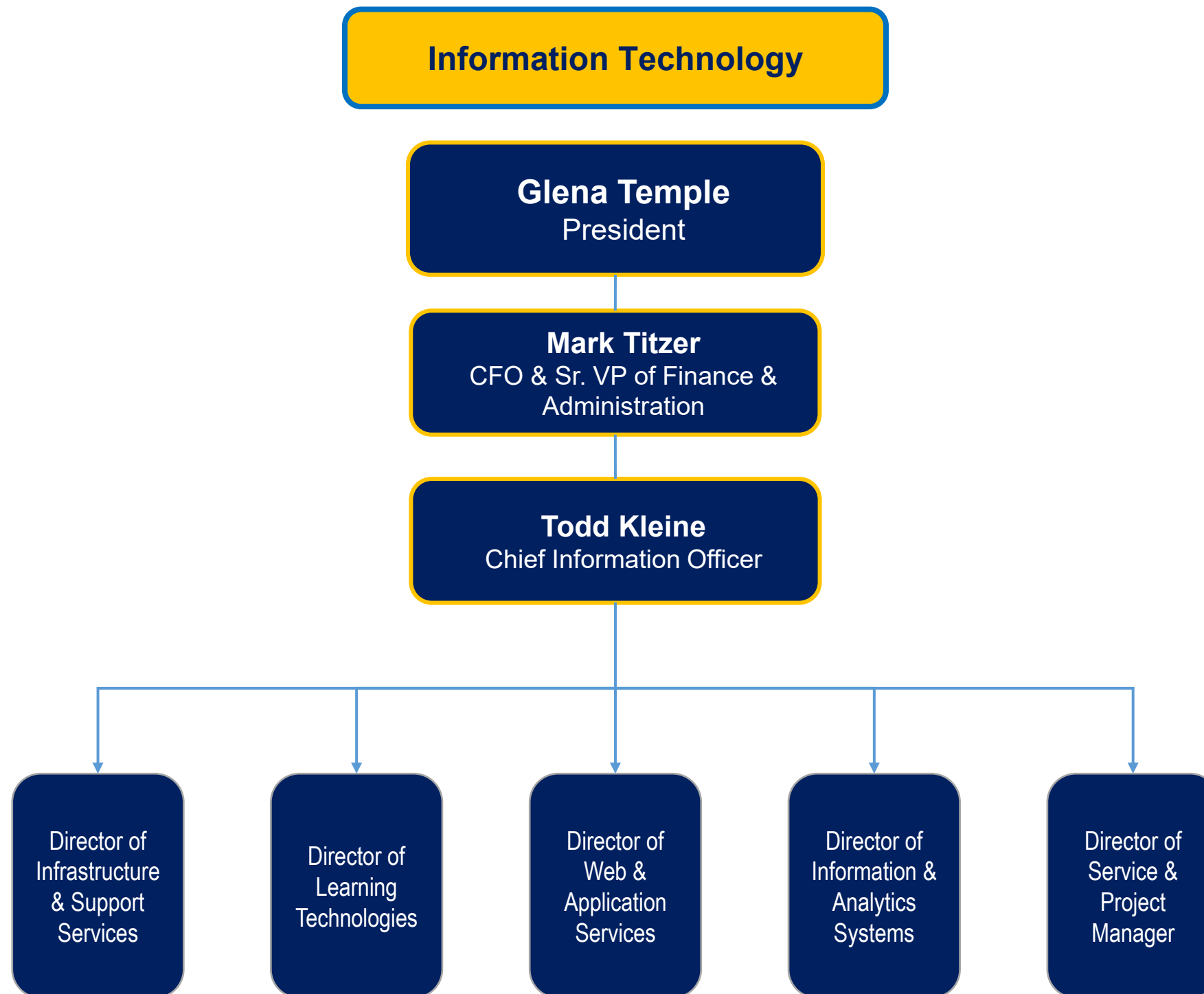
Dean of
Students

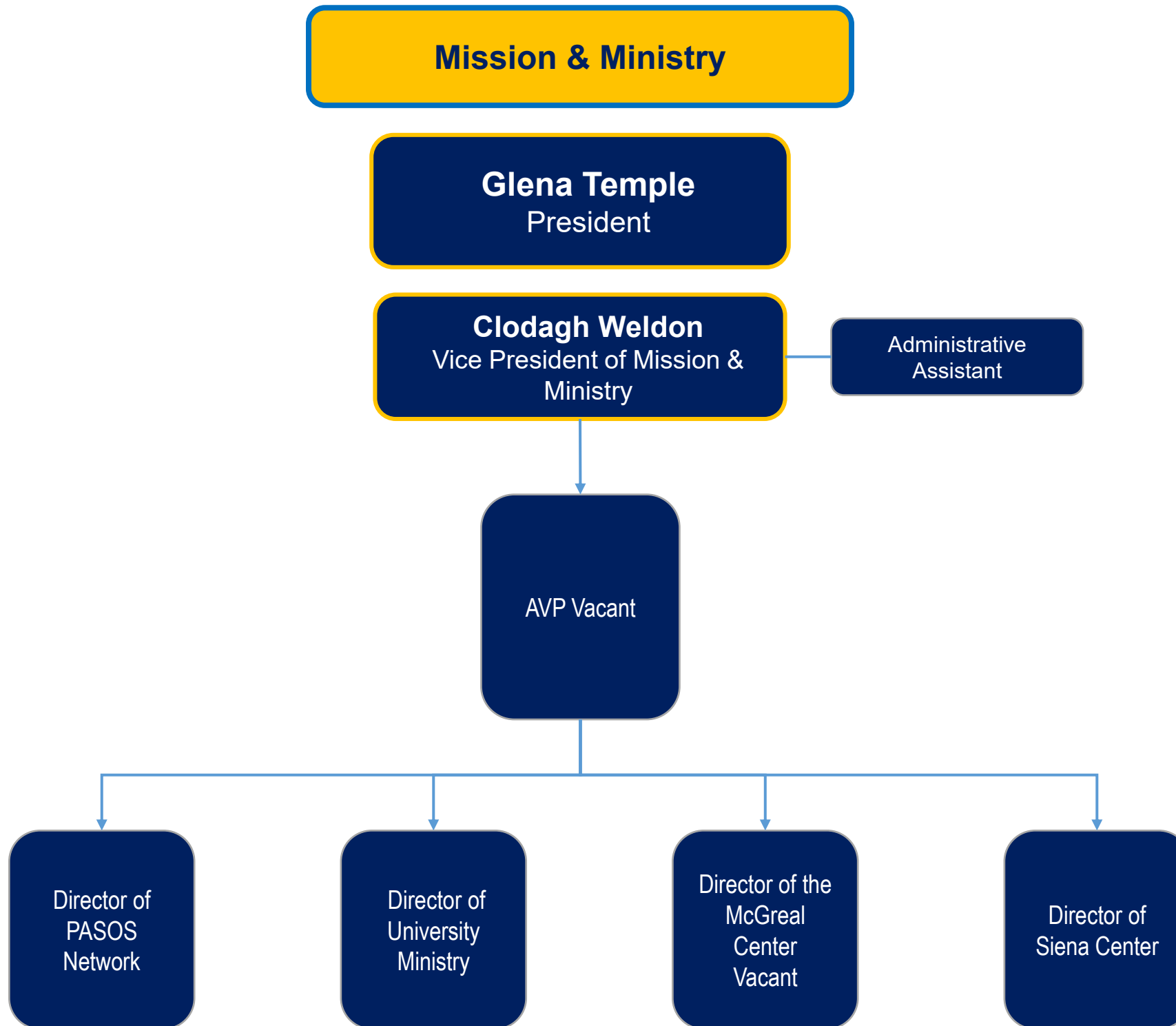
Interim
Director of
TRIO

Director of
SSE
Communicati
ons &
Project
Manager

Director of
Student
Care &
Retention







Office of People and Organizational Culture



Glena Temple
President

Gail Phoenix
Vice President of People
and Culture

Director of
People & Culture

Director of
People Analytics
& Systems

Director of Total
Rewards &
Benefits
Administration

Assistant
Director Talent
Development
and Culture
Vacant

Manager People
and Culture
Operations

Office of Justice, Equity, and Inclusion

Glena Temple
President

Precious Porras
Vice President of Justice, Equity &
Inclusion

One Process
Assistant
Director

Assistant
Director of
Justice, Equity
& Inclusion

