



**DOMINICAN
UNIVERSITY**

Alternative Licensure Programs

Dominican offers alternative licensure programs in the following areas:

- Elementary (including Early Childhood and option for ESL and/or Bilingual Endorsements)
- Middle: English/Language Arts
- Middle: Mathematics
- Middle: Science
- Middle: Social Science
- Secondary: Biology
- Secondary: Chemistry
- Secondary: English/Language Arts
- Special Education (including ECSE Approval and option for ESL Bilingual Approval)

Programs are launched based on enrollment.

Admission Requirements

- A minimum GPA of 2.8, as evidenced by official transcripts from all colleges and universities you've attended
- A completed online application
- Two letters of recommendation
- A written personal statement
- No application fee

Securing a Teaching Position

If you're not currently teaching, you'll need to find a teaching position. We'll provide you with guidance and suggestions on appropriate schools or districts. You'll complete the typical application process that any teacher seeking a K-12 position would pursue.

Alternative Licensure

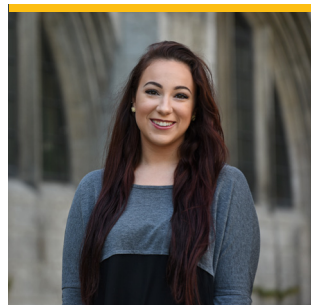
You can start your teaching career even while you earn your academic credentials. Dominican University's Alternative Licensure Program provides you with an efficient way into a rewarding classroom career with programs in elementary, middle, secondary, and special education.

A powerful, practical learning experience

Our Alternative Licensure Program enables you to earn a teacher's license and a master's degree at the same time. It's ideal for new professionals who are attracted to the challenge of a one-year paid residency in a high-need or under-resourced school. The program is highly efficient. In traditional teacher preparation programs, you take all coursework leading to your licensure prior to completing your clinical practice experience. In our program, you jump directly into teaching—with plenty of backup from our outstanding faculty and your onsite professional colleagues. The program takes just one year. Upon completion, you're eligible for both a master's degree and your Professional Educator License (PEL).

An exceptional School of Education

Dominican's School of Education has an outstanding reputation for preparing effective teachers who are profoundly committed to the profession's essential values of scholarship and service—who become leaders in this indispensable field. Our academic programs seamlessly combine theory and practice. You'll form partnerships with outstanding professors in the classroom and in field experiences. You'll gain the critical skills and professional confidence you'll need to support student success across a wide spectrum of educational settings—in urban, suburban, public, private, faith-based, multicultural and charter schools. You'll truly enjoy learning alongside a diverse cohort of fellow students who will become lifelong colleagues.



"I really thrived in Dominican's supportive academic environment. The faculty and the classroom experiences gave me everything I needed to succeed in graduate school and in my teaching career."

Anna DiFronzo

School of Education Graduate

Additional Requirements

Requirements for residency placement in one-year program:

- Successful completion of summer coursework, including Pre-Residency Project.
- Earn a passing score on the summer evaluation of teaching performance
- Complete a major in an area approved by the state
- Pass the ISBE mandated content test
- Earn a cumulative GPA of 3.0 or higher

Requirements to exit from the one-year program:

- Earn a cumulative GPA of 3.0 or higher
- Earn a passing score on the portfolio assessment
- Provide evidence of demonstrating dispositions as outlined by the School of Education
- Provide evidence of teaching competence expected of a first-year teacher on a summative teaching evaluation completed by both your university supervisor and school principal.



Accreditation

Dominican University's School of Education is accredited by the National Council for Accreditation of Teacher Education. NCATE standards are performance-based, focusing on the ability of teacher candidates to demonstrate the subject-matter knowledge and professional skills necessary to help all students learn. Institutions must provide evidence that teacher education programs include qualified faculty and a commitment to preparing teachers to use educational technology.

2024 U.S. NEWS & WORLD REPORT



Contact us

Please contact:

Graduate Admission

 (708) 405-5054

 gradinfo@dom.edu

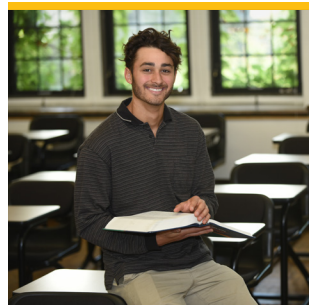
Our Goal: Your Success

Prepare for meaningful service in a growing profession

The U.S. Department of Education projects that K-12 enrollment will grow by 5.2% in the coming years. Job openings for particular specialties will increase by 10% by 2026. As a graduate of Dominican's School of Education, you'll be prepared not only for your first job in this rewarding and rising field but also for a lifetime of intellectual and professional competence. Our alumni work across the United States in a remarkable range of educational settings. They connect with a wide spectrum of students in important and lasting ways, developing their talents and expanding their capacity for intellectual, social and personal growth.

Join a relationship-centered learning community

Our students benefit enormously from our close-knit, mission-based learning environment. No one is lost in the crowd at Dominican. Our student-faculty ratio is 10 to 1. Our average graduate-level class has 14 students. You'll experience individualized support and mentorship from caring faculty who are deeply invested in your success. The Dominican model of community is based on a recognition of the profound value and unique potential of each person. We challenge one another to develop our talents and become our best selves.



"Dominican has built a culture of support and success for students in the classroom and beyond. The professors are amazing people—and they inspired me to rewrite my life story. They are the reason I became a teacher."

Adam Janusz

School of Education Graduate