



The Council of
Independent Colleges

Key Indicators Tool (KIT)

PART A
2024

Dominican University

Sponsored by



CIC KEY INDICATORS TOOL 2024

PART A: STUDENTS AND FACULTY NATIONAL AND MIDWEST REGION

Dominican University

SECTION	TAB NAME	PAGE
INTRODUCTION	INTRODUCTION	1-4
CIC BENCHMARKING SERVICES	SERVICES	5
KIT TRENDS:		
STUDENTS	STUDENTS TRENDS	6
FACULTY	FACULTY TRENDS	7
 STUDENTS		
1 Total Fall Enrollment		
By Region	1R ENROLL	8
By Financial Resources	1F ENROLL	9
By Enrollment Size	1S ENROLL	10
By Carnegie Classification	1C ENROLL	11
2 First-Year Enrollment		
By Region	2R FY ENROLL	12
By Financial Resources	2F FY ENROLL	13
By Enrollment Size	2S FY ENROLL	14
By Carnegie Classification	2C FY ENROLL	15
3 Admissions Yield Rate (%)		
By Region	3R ADMIT YIELD	16
By Financial Resources	3F ADMIT YIELD	17
By Enrollment Size	3S ADMIT YIELD	18
By Carnegie Classification	3C ADMIT YIELD	19
4 Retention Rate (%)		
By Region	4R RETENTION	20
By Financial Resources	4F RETENTION	21
By Enrollment Size	4S RETENTION	22
By Carnegie Classification	4C RETENTION	23
5 Graduation Rate (%)		
By Region	5R GRAD RATE	24
By Financial Resources	5F GRAD RATE	25
By Enrollment Size	5S GRAD RATE	26
By Carnegie Classification	5C GRAD RATE	27

FACULTY

6 Student/Faculty Ratio

By Region	6R STUDENT FAC	28
By Financial Resources	6F STUDENT FAC	29
By Enrollment Size	6S STUDENT FAC	30
By Carnegie Classification	6C STUDENT FAC	31

7 Part-Time Faculty (%)

By Region	7R PT FAC	32
By Financial Resources	7F PT FAC	33
By Enrollment Size	7S PT FAC	34
By Carnegie Classification	7C PT FAC	35

8 Assistant Professor Average Salary (\$)

By Region	8R ASST PROF	36
By Financial Resources	8F ASST PROF	37
By Enrollment Size	8S ASST PROF	38
By Carnegie Classification	8C ASST PROF	39

9 Associate Professor Average Salary (\$)

By Region	9R ASSOC PROF	40
By Financial Resources	9F ASSOC PROF	41
By Enrollment Size	9S ASSOC PROF	42
By Carnegie Classification	9C ASSOC PROF	43

10 Full Professor Average Salary (\$)

By Region	10R PROF	44
By Financial Resources	10F PROF	45
By Enrollment Size	10S PROF	46
By Carnegie Classification	10C PROF	47

APPENDIX

Data Information: Definitions, IPEDS Sources, and Formulas	APPENDIX A	48-50
--	----------------------------	-------

Note: The individual pages for each indicator are identified on the tabs as "R" for region; "F" for financial resources; "S" for enrollment size; and "C" for Carnegie classification.

INTRODUCTION

The Key Indicators Tool (KIT) was developed for the Council of Independent Colleges (CIC) by the Austen Group in 2004. This annual benchmarking report provides 20 indicators of institutional performance for small and mid-sized private not-for-profit colleges and universities. Part A covers student information (enrollment, recruitment, progression) and information related to the faculty. Part B covers a wide range of financial information, such as tuition revenue and financial aid, as well as resources and expenditures. The KIT benchmarking report is an important component of CIC's data initiatives, designed to enhance institutional effectiveness and decision making. This confidential resource is prepared for the exclusive use of CIC member presidents, who in turn may choose to share some or all of the report with key staff, board members, or other constituents. Originally developed with support from the William Randolph Hearst Foundations, CIC gratefully acknowledges Ruffalo Noel Levitz's continued financial support of CIC's benchmarking reports.

Data

The KIT uses data from the Integrated Postsecondary Education Data System (IPEDS), the major national source of publicly available information on postsecondary institutions, provided by the U.S. Department of Education's National Center for Education Statistics. The KIT dataset contains information on approximately 850 four-year, private not-for-profit colleges and universities belonging to six Basic Carnegie Classification categories that represent 95 percent of CIC's membership: Baccalaureate Colleges–Diverse Fields, Baccalaureate Colleges–Arts & Sciences, Master's Colleges and Universities (smaller programs), Master's Colleges and Universities (medium programs), Master's Colleges and Universities (larger programs), and Doctoral/Professional Universities. Institutions are identified using the new 2021 Carnegie Classification. Only institutions with complete data for all five years of comparison are included in each table and chart.

Beginning with the 2021 KIT, CIC has used the IPEDS "Instructional, research and public service FTE staff" and "Part-time instructional, research and public service" variables for indicators Student/Faculty Ratio (Key Indicator 6) and Part-time Faculty (Key Indicator 7). Previously CIC used "Instructional staff, primarily instruction, Full-time and Part-time." As a result, the KIT report will rely on the IPEDS calculation for instructional FTE and a broader definition for instructional staff. For the vast majority of CIC institutions this will make no difference, but for a few it will result in a more useful measure of student-faculty ratio and percentage of part-time faculty.

Data from IPEDS were not altered nor were missing values imputed unless corrected information was provided to CIC directly from an institution. CIC member institutions with incomplete IPEDS data for the most recent year were given the opportunity to submit data prior to the 2024 KIT report. In situations where some data for an institution were unavailable, the tables that present the institution's data contain blank cells and the data were not plotted on that indicator's charts.

Format and Analyses

The KIT provides an individually customized report for each institution with regional and national comparisons over a five-year period based on four sorting criteria: region, financial resources, enrollment size, and 2021 Basic Carnegie Classification. Four pages or worksheets are devoted to each of the 20 indicators, one page for each sorting criterion. Each page contains two charts: a national comparison and a regional comparison.

Individually Customized. A customized KIT has been prepared for each CIC member college and university. Each institution's unique data are plotted against national and regional backdrops. On pages presenting comparisons by financial resources, enrollment size, and Carnegie classification, a box in the upper right corner indicates the institution's corresponding category.

Five-Year Trends. To understand how an institution has performed over time and to indicate the direction of a trend, the charts cover five-year periods. Indicators 1-11 cover academic year 2018-2019 through academic year 2022-2023. Indicators 12-20 cover academic year 2017-2018 through academic year 2021-2022. In every case, the most recent IPEDS data are used. When data are presented as whole numbers, a five-year percentage change is calculated.

Medians versus Means. The KIT uses national and regional median values (identical to the 50th percentile). The advantage of using median values instead of the mean (average) is that the median is less influenced by high or low extremes, thus providing a more meaningful mid-point for comparative purposes.

Four Sorting Criteria. The 20 indicators are presented according to four criteria: region of the country, financial resources, enrollment size, and 2021 Basic Carnegie Classification. The individual pages for each indicator are identified on the Excel tabs as "R" for region; "F" for financial resources; "S" for enrollment size; and "C" for Carnegie classification.

1. **Region:** Each institution is located in one of the six regional categories as outlined below. These regions were selected to reflect the distribution and affinity of CIC member institutions and are not identical to those assigned in IPEDS.

Region	State
Far West	Alaska, California, Hawaii, Nevada, Oregon, Washington
Mid East	Delaware, District of Columbia, Maryland, New Jersey, New York, Pennsylvania
Midwest	Illinois, Indiana, Iowa, Michigan, Minnesota, Missouri, Ohio, Wisconsin
New England	Connecticut, Maine, Massachusetts, New Hampshire, Rhode Island, Vermont
Southeast	Alabama, Arkansas, Florida, Georgia, Kentucky, Louisiana, Mississippi, North Carolina, South Carolina, Tennessee, Virginia, West Virginia
West	Arizona, Colorado, Idaho, Kansas, Montana, Nebraska, New Mexico, North Dakota, Oklahoma, South Dakota, Texas, Utah, Wyoming

2. **Financial Resource Quartile:** Each institution was placed in one of four quartiles based on an institution's financial resources. The financial resource measure was calculated by converting two equally weighted indicators: *Net Tuition Revenue per Student* (Key Indicator 15) and *Endowment Assets per Student* (Key Indicator 18). An average of the three most recent years for this calculation is used to create a percentile rank of all institutions in the dataset. Each institution was then assigned to a national and regional quartile based on the distribution of the KIT dataset for the most recent year.

3. **Enrollment Size:** Institution size uses four enrollment categories: (1) fewer than 1,000 students; (2) 1,000 to 2,000 students; (3) greater than 2,000 to 3,000 students; and (4) greater than 3,000 students.

4. 2021 Basic Carnegie Classification: The KIT provides comparisons based upon the following five basic Carnegie classifications established in 2005 and revised in 2021: Baccalaureate Colleges–Diverse Fields, Baccalaureate Colleges–Arts & Sciences, Master's Colleges and Universities (smaller programs), Master's Colleges and Universities (medium programs), Master's Colleges and Universities (larger programs), and Doctoral/Professional Universities . These classification groups comprise 95 percent of CIC's membership. For additional information about the 2021 Basic Carnegie Classifications, including definitions of various categories, visit:

<https://carnegieclassifications.acenet.edu/>

Distribution. The following table shows the relative distribution of institutions in the KIT dataset within each region by national financial resource quartile, enrollment size category, and Carnegie classification.

	Financial Resources	%	Enrollment Size	%	Carnegie Classification	%
Far West	Quartile 1 (top)	41%	>3,000	27%	Doctoral/Professional	24%
	Quartile 2	20%	2,001-3,000	10%	MA-Larger	14%
	Quartile 3	23%	1,000-2,000	26%	MA-Medium/Smaller	29%
	Quartile 4 (bottom)	16%	<1,000	37%	BA-Arts & Sciences	22%
					BA-Diverse Fields	10%
Mid East	Quartile 1 (top)	34%	>3,000	25%	Doctoral/Professional	17%
	Quartile 2	28%	2,001-3,000	25%	MA-Larger	25%
	Quartile 3	27%	1,000-2,000	34%	MA-Medium/Smaller	23%
	Quartile 4 (bottom)	11%	<1,000	16%	BA-Arts & Sciences	25%
					BA-Diverse Fields	10%
Midwest	Quartile 1 (top)	23%	>3,000	17%	Doctoral/Professional	13%
	Quartile 2	29%	2,001-3,000	19%	MA-Larger	18%
	Quartile 3	24%	1,000-2,000	38%	MA-Medium/Smaller	25%
	Quartile 4 (bottom)	24%	<1,000	27%	BA-Arts & Sciences	24%
					BA-Diverse Fields	20%
New England	Quartile 1 (top)	44%	>3,000	30%	Doctoral/Professional	15%
	Quartile 2	25%	2,001-3,000	24%	MA-Larger	25%
	Quartile 3	16%	1,000-2,000	28%	MA-Medium/Smaller	22%
	Quartile 4 (bottom)	14%	<1,000	18%	BA-Arts & Sciences	30%
					BA-Diverse Fields	8%
Southeast	Quartile 1 (top)	14%	>3,000	16%	Doctoral/Professional	15%
	Quartile 2	21%	2,001-3,000	13%	MA-Larger	8%
	Quartile 3	25%	1,000-2,000	34%	MA-Medium/Smaller	21%
	Quartile 4 (bottom)	40%	<1,000	37%	BA-Arts & Sciences	26%
					BA-Diverse Fields	29%
West	Quartile 1 (top)	13%	>3,000	15%	Doctoral/Professional	13%
	Quartile 2	24%	2,001-3,000	11%	MA-Larger	17%
	Quartile 3	31%	1,000-2,000	33%	MA-Medium/Smaller	27%
	Quartile 4 (bottom)	32%	<1,000	41%	BA-Arts & Sciences	6%
					BA-Diverse Fields	38%
	National		>3,000	20%	Doctoral/Professional	16%
			2,001-3,000	17%	MA-Larger	17%
			1,000-2,000	33%	MA-Medium/Smaller	24%
			<1,000	29%	BA-Arts & Sciences	23%
					BA-Diverse Fields	20%

Appendix. At the end of each part of the report is an appendix that defines each indicator, detailing the source of the IPEDS data utilized, and the formulas used to calculate ratios and other measures.

The IPEDS Data Feedback Report

Each fall the National Center for Education Statistics sends to college and university presidents a summary benchmarking report that compares IPEDS data from the most recent year for their institution to a select group of similar colleges and universities. This Data Feedback Report (DFR) may be a useful companion to CIC's Key Indicators Tool (KIT) report. Data for both reports come from the same source, although not all of the indicators are identical. Furthermore, the DFR provides data for only the most recent reporting year, whereas the KIT presents trends over the most recent five years. The Data Feedback Report for any Title IV participating institution is available on the IPEDS website:

<http://nces.ed.gov/ipeds/>

The Council of Independent Colleges

The Council of Independent Colleges (CIC) is an association of 761 nonprofit independent colleges and universities, state-based councils of independent colleges, and other higher education affiliates, that works to support college and university leadership, advance institutional excellence, and enhance public understanding of independent higher education's contributions to society. CIC is the major national organization that focuses on services to leaders of independent colleges and universities and state-based councils. CIC offers conferences, seminars, publications, and other programs and services that help institutions improve educational quality, administrative and financial performance, student outcomes, and institutional visibility. It conducts the largest annual conferences of college and university presidents and of chief academic officers in the United States. Founded in 1956, CIC is headquartered at One Dupont Circle in Washington, DC. For more information, visit

www.cic.edu

For questions or comments about CIC's benchmarking services, including the Key Indicators Tool (FIT), please contact Ellen Peters, CIC Director of Strategic Research, by phone at (202) 466-7230 or by email at

epeters@cic.edu

RNL

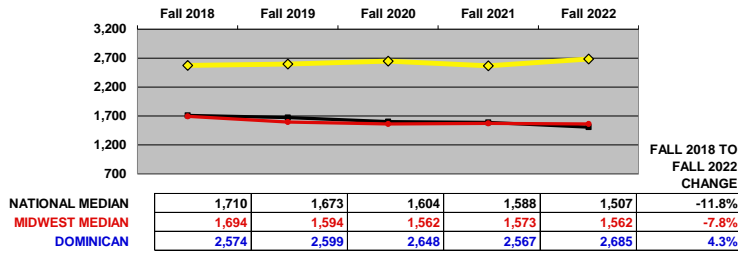
Ruffalo Noel Levitz (RNL) is the leading provider of higher education enrollment, student success, and fundraising solutions. The firm serves more than 1,900 colleges and universities through data-driven solutions focused on the entire lifecycle of enrollment and fundraising, assuring students find the right program, graduate on time, secure their first job in their chosen field, and give back to support the next generation. With a deep knowledge of the industry, RNL provides institutions the ability to scale their efforts by tapping into a community of support and resources. To learn more, visit:

www.RuffaloNL.com

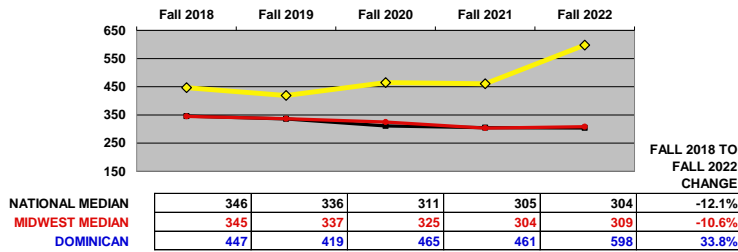
Dominican University

KIT TRENDS: STUDENTS

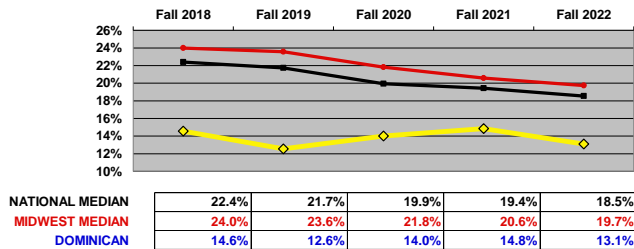
1) TOTAL FALL ENROLLMENT (FALL FTE)



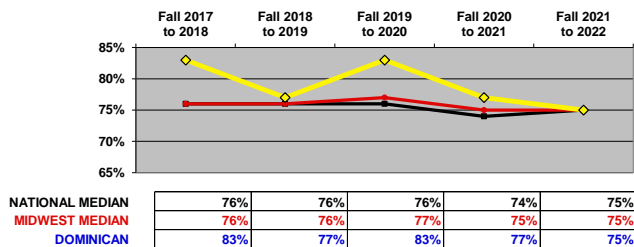
2) FIRST-YEAR ENROLLMENT (FULL-TIME UNDERGRADUATE)



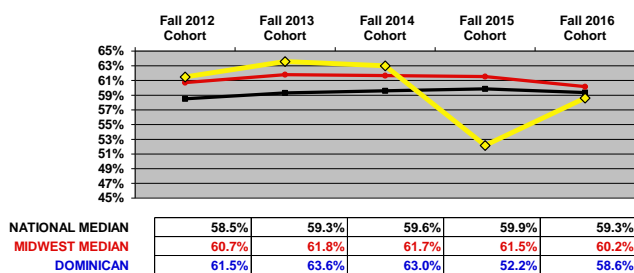
3) ADMISSIONS YIELD RATE (%) (ADMITTED TO ENROLLED)



4) RETENTION RATE (%) (FIRST TO SECOND YEAR)



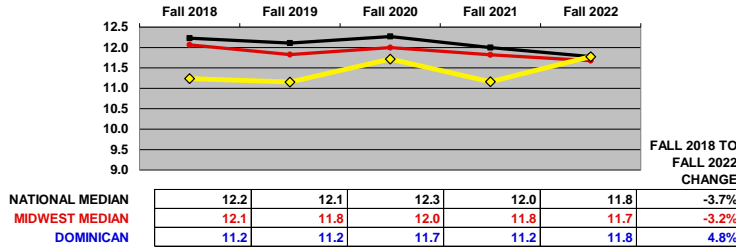
5) GRADUATION RATE (%) (SIX-YEAR COHORT RATE)



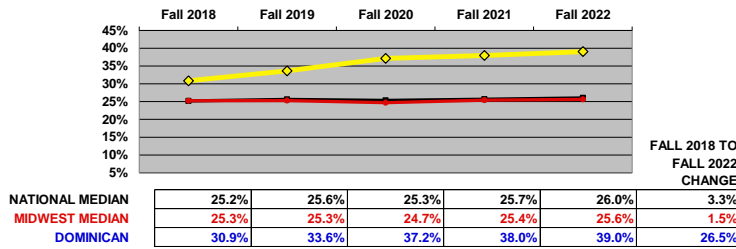
Dominican University

KIT TRENDS: FACULTY

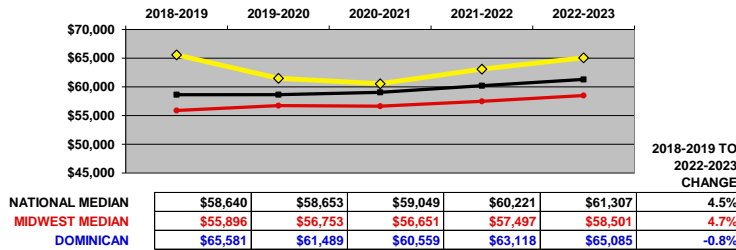
6) STUDENT/FACULTY RATIO



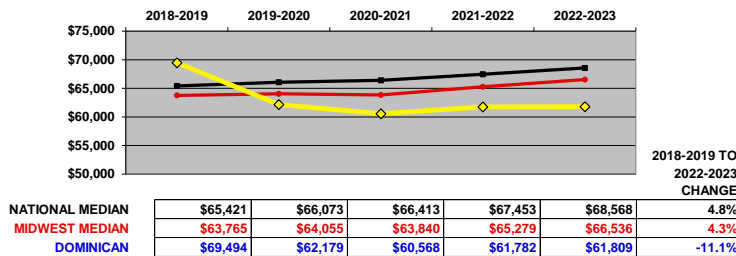
7) PART-TIME FACULTY (%)



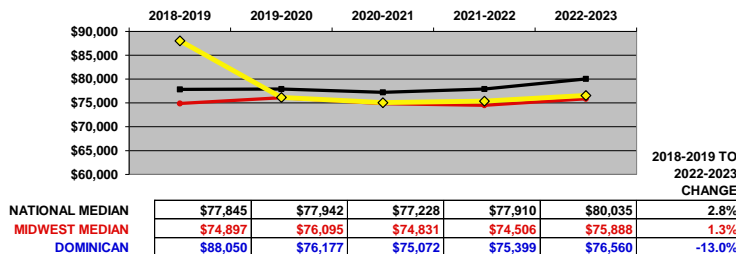
8) ASSISTANT PROFESSOR AVERAGE SALARY (\$) (EQUATED TO A 9-MONTH CONTRACT)



9) ASSOCIATE PROFESSOR AVERAGE SALARY (\$) (EQUATED TO A 9-MONTH CONTRACT)



10) FULL PROFESSOR AVERAGE SALARY (\$) (EQUATED TO A 9-MONTH CONTRACT)

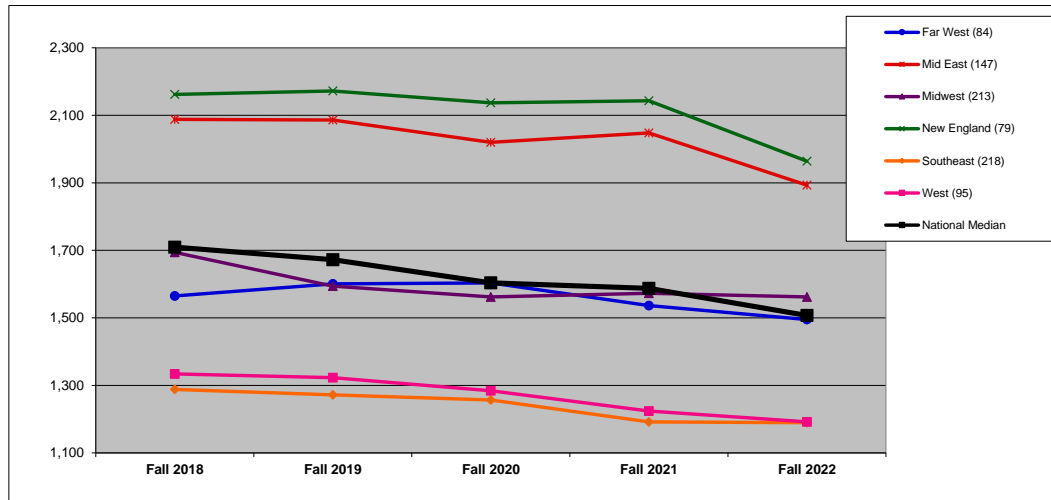


TOTAL FALL ENROLLMENT: BY REGION (1R)

DEFINITION: Total fall full-time equivalent (FTE) enrollment, including undergraduate, graduate, and first-professional students.

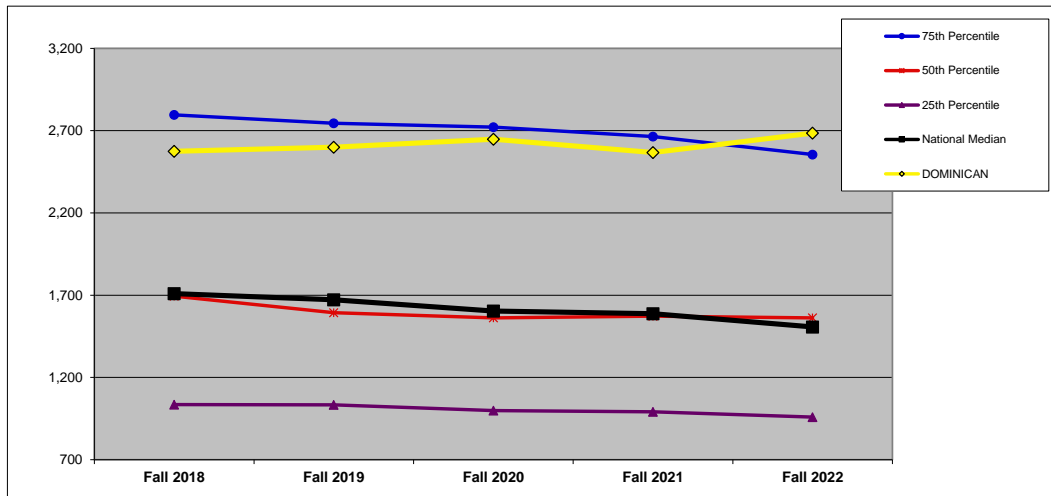
	Fall 2018	Fall 2019	Fall 2020	Fall 2021	Fall 2022	Y1 to Y5 Change
DOMINICAN	2,574	2,599	2,648	2,567	2,685	4.3%

NATIONAL (n=836). All data on this chart are presented as medians. See Introduction for description of regions.



	Fall 2018	Fall 2019	Fall 2020	Fall 2021	Fall 2022	Y1 to Y5 Change
Far West (84)	1,565	1,601	1,604	1,537	1,495	-4.5%
Mid East (147)	2,088	2,086	2,020	2,048	1,893	-9.3%
Midwest (213)	1,694	1,594	1,562	1,573	1,562	-7.8%
New England (79)	2,162	2,172	2,137	2,143	1,964	-9.2%
Southeast (218)	1,288	1,272	1,257	1,192	1,190	-7.6%
West (95)	1,334	1,323	1,284	1,224	1,192	-10.6%
National Median	1,710	1,673	1,604	1,588	1,507	-11.8%

MIDWEST REGION (n=213). In addition to the median, which is the 50th percentile, this chart shows the 75th and 25th percentiles for the region.



	Fall 2018	Fall 2019	Fall 2020	Fall 2021	Fall 2022	Y1 to Y5 Change
75th Percentile	2,796	2,745	2,722	2,664	2,555	-8.6%
50th Percentile	1,694	1,594	1,562	1,573	1,562	-7.8%
25th Percentile	1,035	1,034	998	991	959	-7.3%
National Median	1,710	1,673	1,604	1,588	1,507	-11.8%
DOMINICAN	2,574	2,599	2,648	2,567	2,685	4.3%

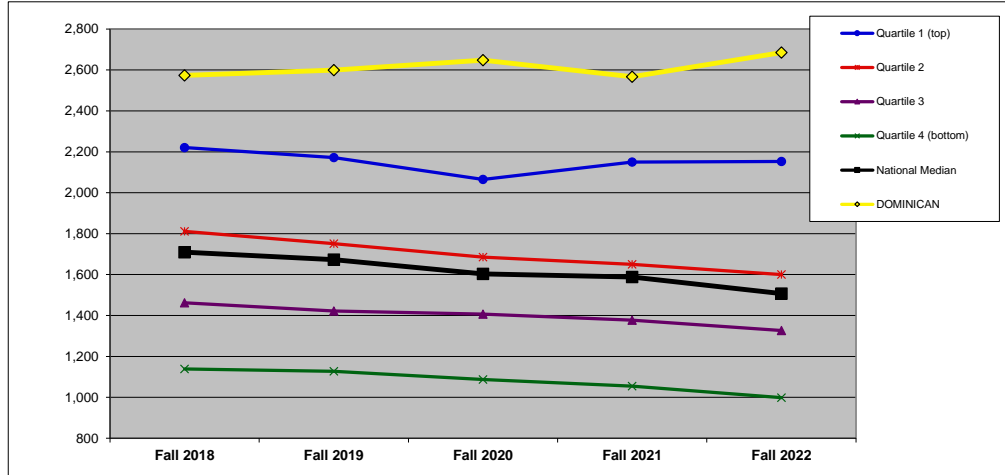
TOTAL FALL ENROLLMENT: BY FINANCIAL RESOURCES (1F)

DEFINITION: Total fall full-time equivalent (FTE) enrollment, including undergraduate, graduate, and first-professional students. (All national and regional data are presented as medians.)

	Fall 2018	Fall 2019	Fall 2020	Fall 2021	Fall 2022	Y1 to Y5 Change
DOMINICAN	2,574	2,599	2,648	2,567	2,685	4.3%

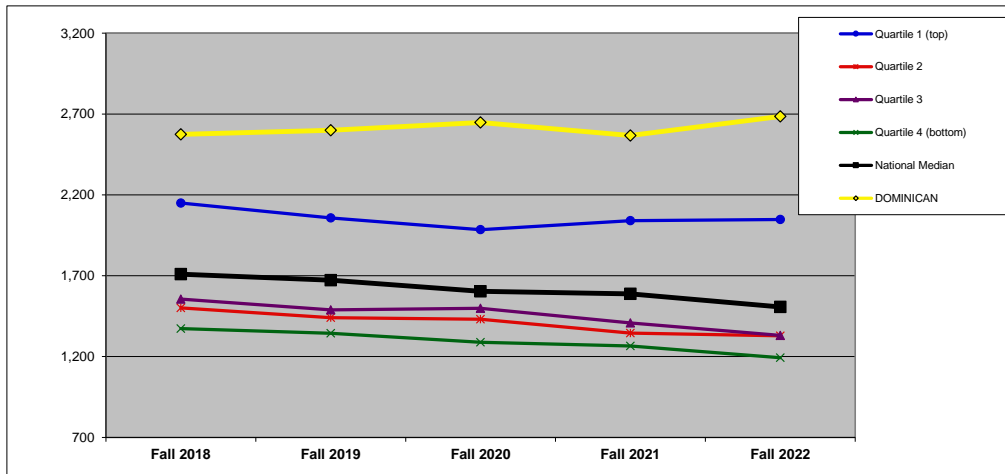
QUARTILES	
NATIONAL	2
REGIONAL	2

NATIONAL: FINANCIAL RESOURCES (n=836).



	Fall 2018	Fall 2019	Fall 2020	Fall 2021	Fall 2022	Y1 to Y5 Change
Quartile 1 (top)	2,221	2,172	2,065	2,150	2,153	-3.1%
Quartile 2	1,811	1,751	1,685	1,650	1,600	-11.7%
Quartile 3	1,462	1,422	1,407	1,378	1,327	-9.3%
Quartile 4 (bottom)	1,139	1,127	1,087	1,055	999	-12.3%
National Median	1,710	1,673	1,604	1,588	1,507	-11.8%
DOMINICAN	2,574	2,599	2,648	2,567	2,685	4.3%

MIDWEST REGION: FINANCIAL RESOURCES (n=213).



	Fall 2018	Fall 2019	Fall 2020	Fall 2021	Fall 2022	Y1 to Y5 Change
Quartile 1 (top)	2,150	2,057	1,985	2,041	2,048	-4.7%
Quartile 2	1,501	1,441	1,431	1,346	1,329	-11.5%
Quartile 3	1,556	1,489	1,499	1,408	1,331	-14.4%
Quartile 4 (bottom)	1,373	1,344	1,289	1,266	1,193	-13.1%
National Median	1,710	1,673	1,604	1,588	1,507	-11.8%
DOMINICAN	2,574	2,599	2,648	2,567	2,685	4.3%

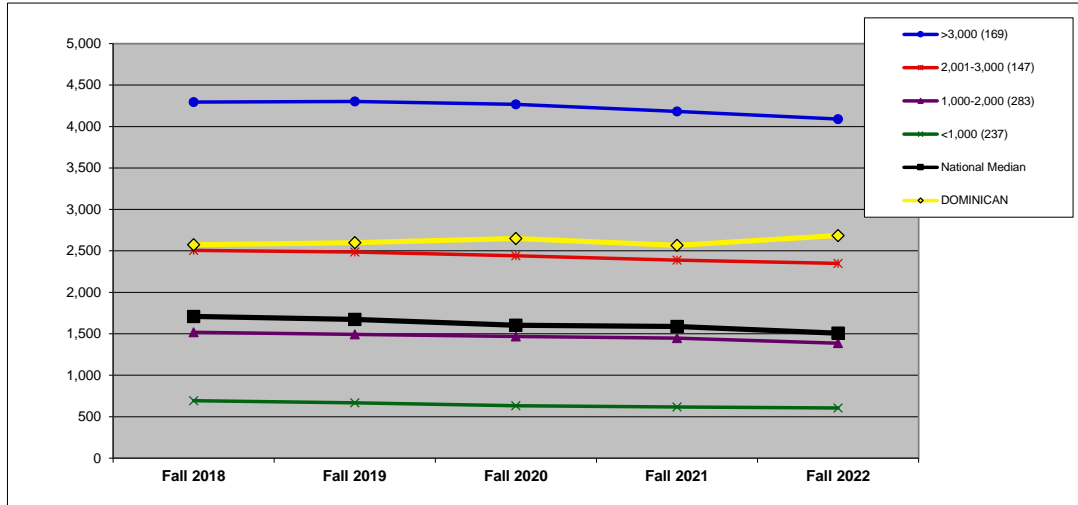
TOTAL FALL ENROLLMENT: BY ENROLLMENT SIZE (1S)

DEFINITION: Total fall full-time equivalent (FTE) enrollment, including undergraduate, graduate, and first-professional students. (All national and regional data are presented as medians.)

	Fall 2018	Fall 2019	Fall 2020	Fall 2021	Fall 2022	Y1 to Y5 Change
DOMINICAN	2,574	2,599	2,648	2,567	2,685	4.3%

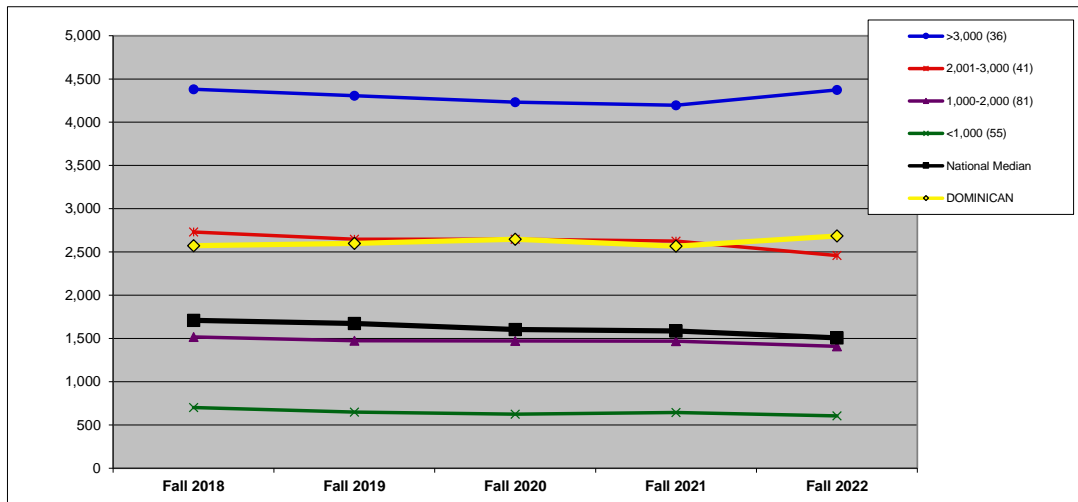
SIZE 2,001-3,000

NATIONAL: SIZE (n=836).



	Fall 2018	Fall 2019	Fall 2020	Fall 2021	Fall 2022	Y1 to Y5 Change
>3,000 (169)	4,295	4,302	4,267	4,182	4,090	-4.8%
2,001-3,000 (147)	2,506	2,487	2,442	2,387	2,349	-6.3%
1,000-2,000 (283)	1,518	1,492	1,467	1,448	1,386	-8.7%
<1,000 (237)	693	666	632	616	605	-12.7%
National Median	1,710	1,673	1,604	1,588	1,507	-11.8%
DOMINICAN	2,574	2,599	2,648	2,567	2,685	4.3%

MIDWEST REGION: SIZE (n=213).



	Fall 2018	Fall 2019	Fall 2020	Fall 2021	Fall 2022	Y1 to Y5 Change
>3,000 (36)	4,382	4,307	4,232	4,197	4,374	-0.2%
2,001-3,000 (41)	2,731	2,648	2,648	2,626	2,459	-10.0%
1,000-2,000 (81)	1,518	1,473	1,472	1,468	1,409	-7.2%
<1,000 (55)	702	650	624	645	605	-13.8%
National Median	1,710	1,673	1,604	1,588	1,507	-11.8%
DOMINICAN	2,574	2,599	2,648	2,567	2,685	4.3%

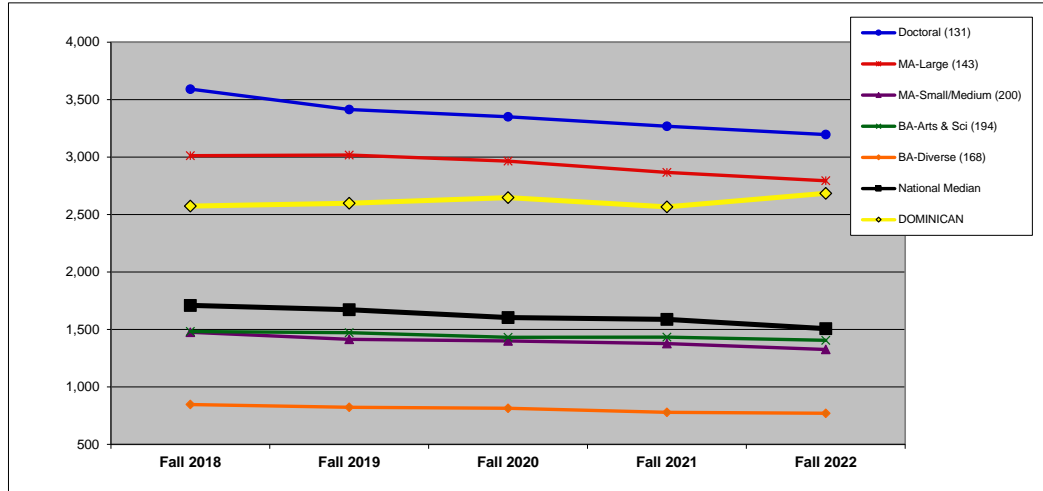
TOTAL FALL ENROLLMENT: BY CARNEGIE CLASSIFICATION (1C)

DEFINITION: Total fall full-time equivalent (FTE) enrollment, including undergraduate, graduate, and first-professional students. See Introduction for information on the Carnegie classifications. (All national and regional data are presented as medians.)

	Fall 2018	Fall 2019	Fall 2020	Fall 2021	Fall 2022	Y1 to Y5 Change
DOMINICAN	2,574	2,599	2,648	2,567	2,685	4.3%

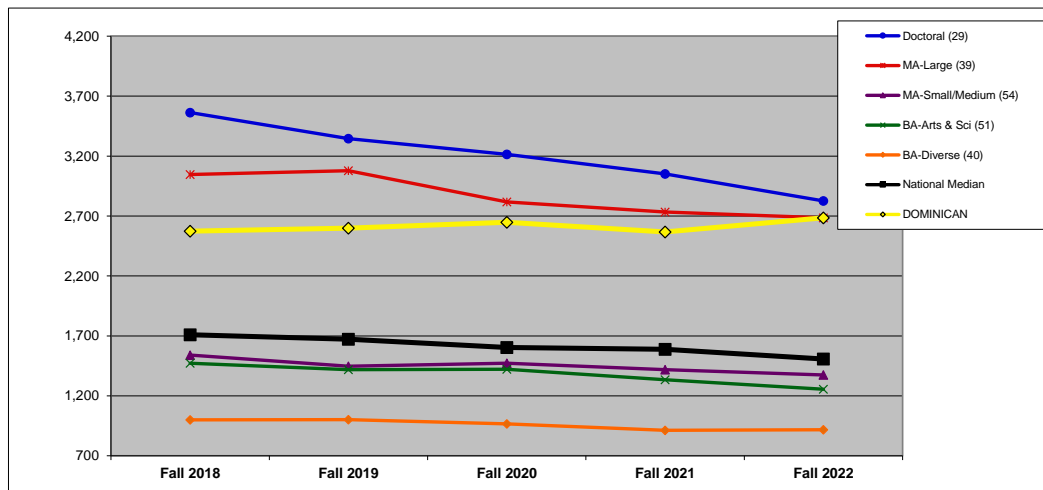
CARNEGIE MA-Larger

NATIONAL: CARNEGIE (n=836).



	Fall 2018	Fall 2019	Fall 2020	Fall 2021	Fall 2022	Y1 to Y5 Change
Doctoral (131)	3,592	3,414	3,351	3,269	3,196	-11.0%
MA-Large (143)	3,013	3,018	2,965	2,866	2,794	-7.3%
MA-Small/Medium (200)	1,476	1,414	1,401	1,377	1,326	-10.2%
BA-Arts & Sci (194)	1,482	1,471	1,432	1,433	1,406	-5.2%
BA-Diverse (168)	847	822	815	779	771	-9.0%
National Median	1,710	1,673	1,604	1,588	1,507	-11.8%
DOMINICAN	2,574	2,599	2,648	2,567	2,685	4.3%

MIDWEST REGION: CARNEGIE (n=213).



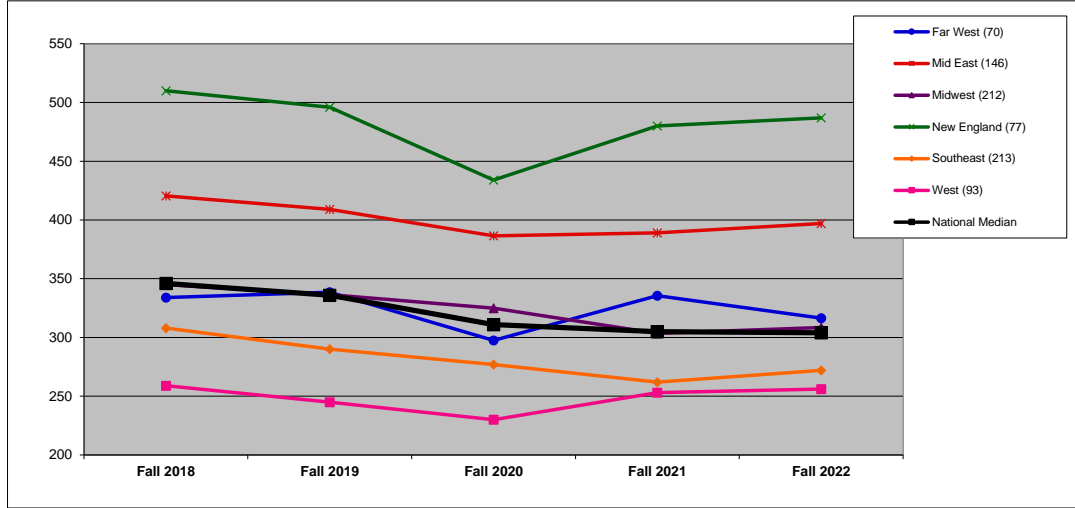
	Fall 2018	Fall 2019	Fall 2020	Fall 2021	Fall 2022	Y1 to Y5 Change
Doctoral (29)	3,563	3,346	3,215	3,052	2,826	-20.7%
MA-Large (39)	3,047	3,078	2,818	2,734	2,685	-11.9%
MA-Small/Medium (54)	1,540	1,448	1,472	1,419	1,374	-10.8%
BA-Arts & Sci (51)	1,472	1,418	1,421	1,335	1,255	-14.7%
BA-Diverse (40)	1,000	1,002	967	913	918	-8.2%
National Median	1,710	1,673	1,604	1,588	1,507	-11.8%
DOMINICAN	2,574	2,599	2,648	2,567	2,685	4.3%

FIRST-YEAR ENROLLMENT: BY REGION (2R)

DEFINITION: Total fall full-time, first-time degree-seeking undergraduate students.

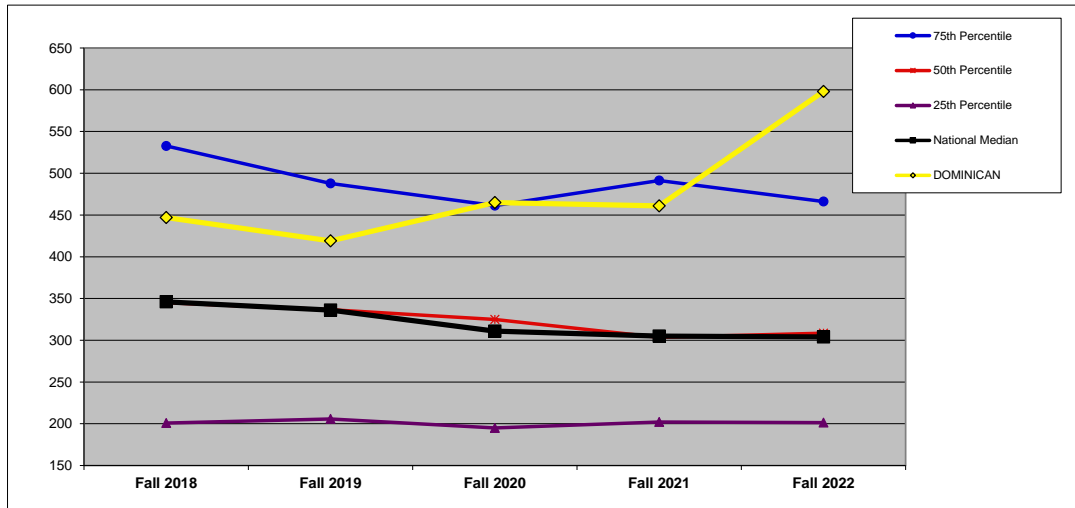
	Fall 2018	Fall 2019	Fall 2020	Fall 2021	Fall 2022	Y1 to Y5 Change
DOMINICAN	447	419	465	461	598	33.8%

NATIONAL (n=811). All data on this chart are presented as medians. See Introduction for description of regions.



	Fall 2018	Fall 2019	Fall 2020	Fall 2021	Fall 2022	Y1 to Y5 Change
Far West (70)	334	339	298	336	317	-5.2%
Mid East (146)	421	409	387	389	397	-5.6%
Midwest (212)	345	337	325	304	309	-10.6%
New England (77)	510	496	434	480	487	-4.5%
Southeast (213)	308	290	277	262	272	-11.7%
West (93)	259	245	230	253	256	-1.2%
National Median	346	336	311	305	304	-12.1%

MIDWEST REGION (n=212). In addition to the median, which is the 50th percentile, this chart shows the 75th and 25th percentiles for the region.



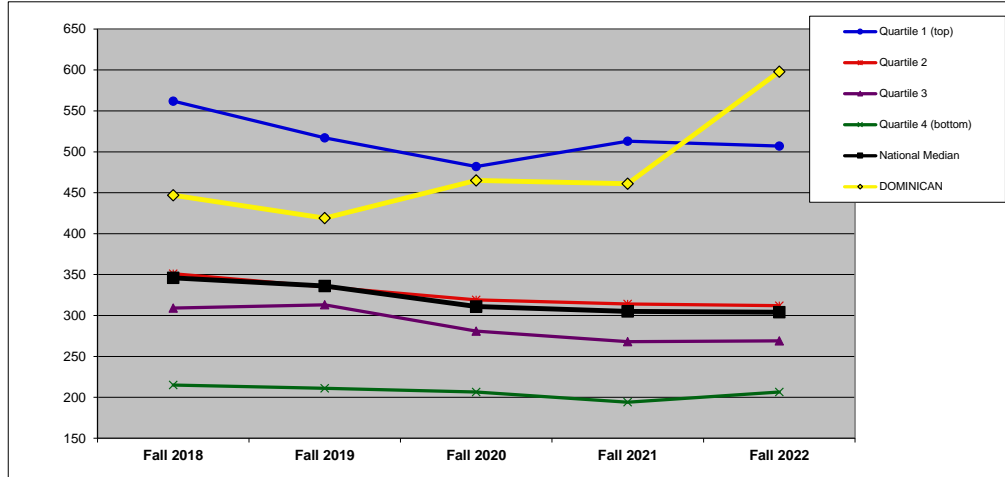
	Fall 2018	Fall 2019	Fall 2020	Fall 2021	Fall 2022	Y1 to Y5 Change
75th Percentile	533	488	461	491	466	-12.5%
50th Percentile	345	337	325	304	309	-10.6%
25th Percentile	201	206	195	202	201	0.2%
National Median	346	336	311	305	304	-12.1%
DOMINICAN	447	419	465	461	598	33.8%

FIRST-YEAR ENROLLMENT: BY FINANCIAL RESOURCES (2F)

DEFINITION: Total fall full-time, first-time degree-seeking undergraduate students. (All national and regional data are presented as medians.)

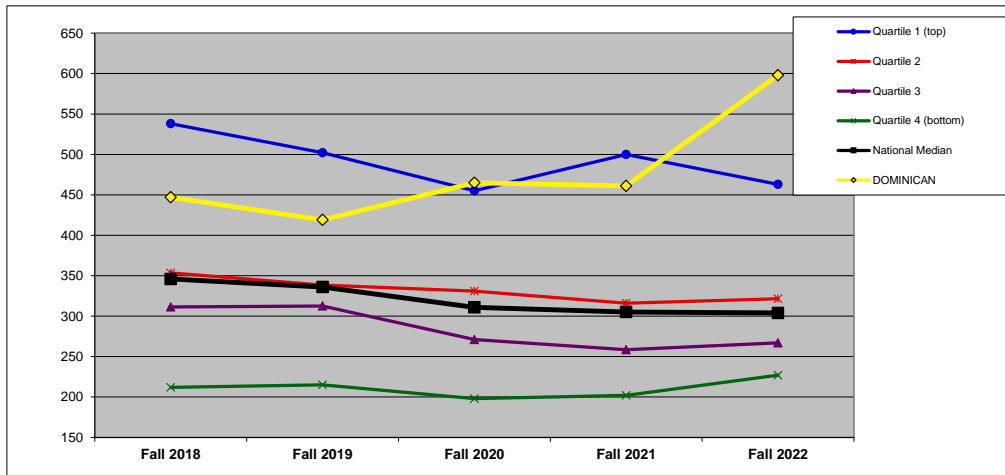
	Fall 2018	Fall 2019	Fall 2020	Fall 2021	Fall 2022	Y1 to Y5 Change	QUARTILES	
DOMINICAN	447	419	465	461	598	33.8%	NATIONAL	2
							REGIONAL	2

NATIONAL: FINANCIAL RESOURCES (n=811).



	Fall 2018	Fall 2019	Fall 2020	Fall 2021	Fall 2022	Y1 to Y5 Change
Quartile 1 (top)	562	517	482	513	507	-9.8%
Quartile 2	351	335	319	314	312	-11.1%
Quartile 3	309	313	281	268	269	-12.9%
Quartile 4 (bottom)	215	211	207	194	207	-4.0%
National Median	346	336	311	305	304	-12.1%
DOMINICAN	447	419	465	461	598	33.8%

MIDWEST REGION: FINANCIAL RESOURCES (n=212).



	Fall 2018	Fall 2019	Fall 2020	Fall 2021	Fall 2022	Y1 to Y5 Change
Quartile 1 (top)	538	502	455	500	463	-13.9%
Quartile 2	354	339	331	316	322	-9.1%
Quartile 3	312	313	271	259	267	-14.3%
Quartile 4 (bottom)	212	215	198	202	227	7.1%
National Median	346	336	311	305	304	-12.1%
DOMINICAN	447	419	465	461	598	33.8%

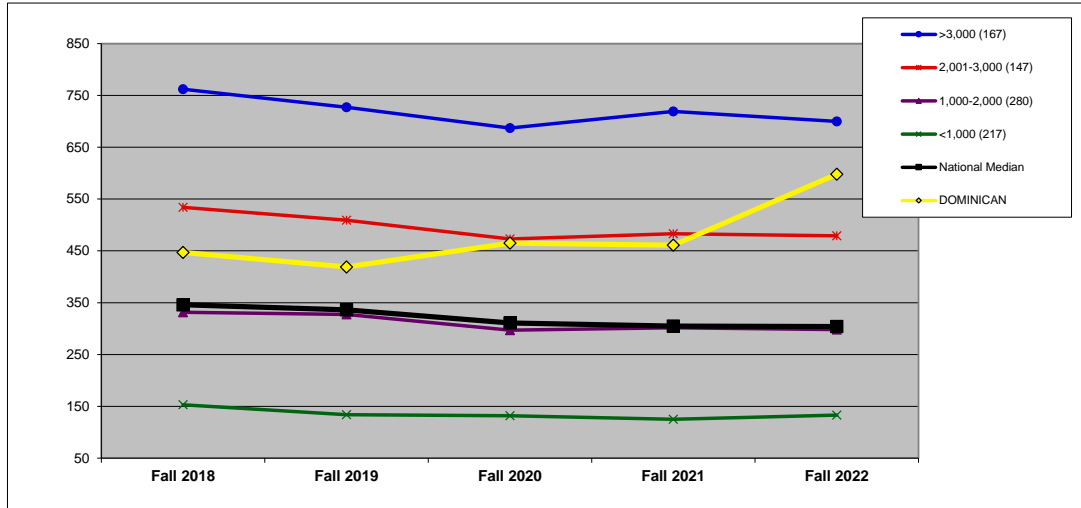
FIRST-YEAR ENROLLMENT: BY ENROLLMENT SIZE (2S)

DEFINITION: Total fall full-time, first-time degree-seeking undergraduate students. (All national and regional data are presented as medians.)

	Fall 2018	Fall 2019	Fall 2020	Fall 2021	Fall 2022	Y1 to Y5 Change
DOMINICAN	447	419	465	461	598	33.8%

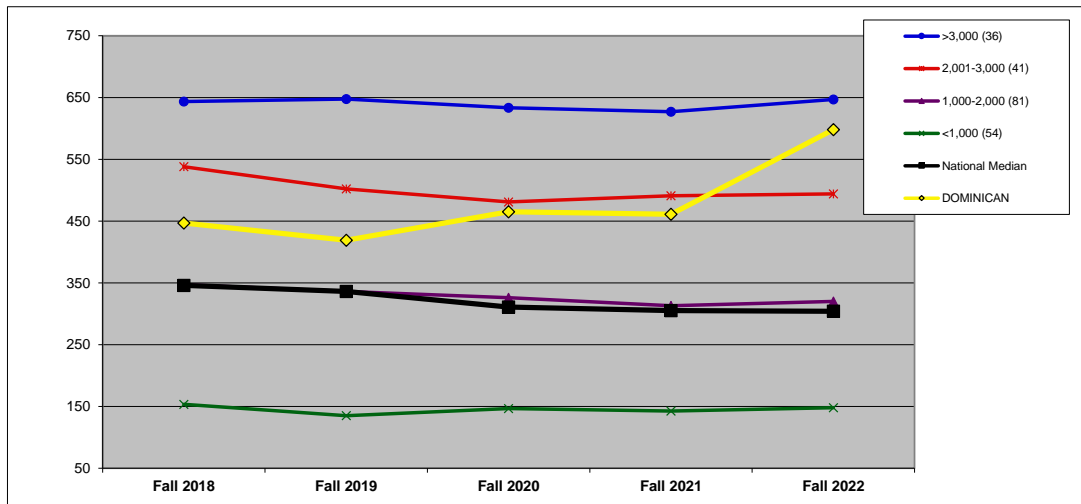
SIZE 2,001-3,000

NATIONAL: SIZE (n=811).



	Fall 2018	Fall 2019	Fall 2020	Fall 2021	Fall 2022	Y1 to Y5 Change
>3,000 (167)	762	727	687	719	700	-8.1%
2,001-3,000 (147)	534	509	473	483	479	-10.3%
1,000-2,000 (280)	332	328	297	302	298	-10.1%
<1,000 (217)	153	134	132	125	133	-13.1%
National Median	346	336	311	305	304	-12.1%
DOMINICAN	447	419	465	461	598	33.8%

MIDWEST REGION: SIZE (n=212).



	Fall 2018	Fall 2019	Fall 2020	Fall 2021	Fall 2022	Y1 to Y5 Change
>3,000 (36)	644	648	634	627	647	0.5%
2,001-3,000 (41)	538	502	481	491	494	-8.2%
1,000-2,000 (81)	347	336	326	313	320	-7.8%
<1,000 (54)	154	135	147	143	148	-3.6%
National Median	346	336	311	305	304	-12.1%
DOMINICAN	447	419	465	461	598	33.8%

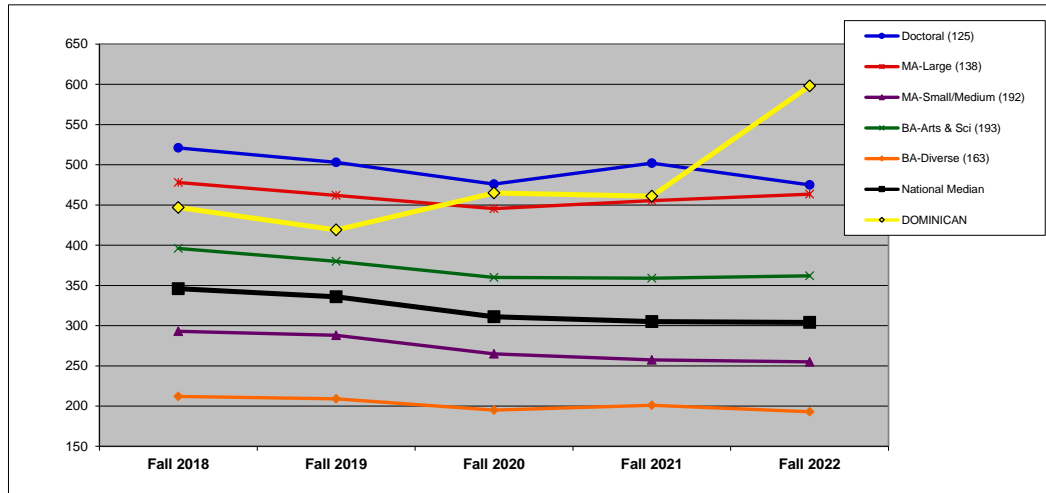
FIRST-YEAR ENROLLMENT: BY CARNEGIE CLASSIFICATION (2C)

DEFINITION: Total fall full-time, first-time degree-seeking undergraduate students. See Introduction for information on the Carnegie classifications. (All national and regional data are presented as medians.)

	Fall 2018	Fall 2019	Fall 2020	Fall 2021	Fall 2022	Y1 to Y5 Change
DOMINICAN	447	419	465	461	598	33.8%

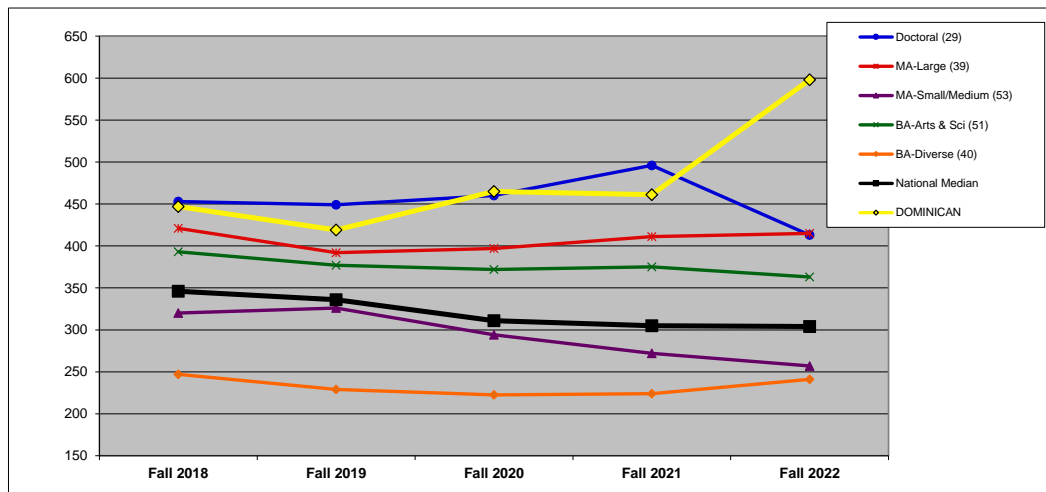
CARNEGIE MA-Larger

NATIONAL: CARNEGIE (n=811).



	Fall 2018	Fall 2019	Fall 2020	Fall 2021	Fall 2022	Y1 to Y5 Change
Doctoral (125)	521	503	476	502	475	-8.8%
MA-Large (138)	478	462	446	456	464	-3.0%
MA-Small/Medium (192)	293	288	265	258	255	-13.0%
BA-Arts & Sci (193)	396	380	360	359	362	-8.6%
BA-Diverse (163)	212	209	195	201	193	-9.0%
National Median	346	336	311	305	304	-12.1%
DOMINICAN	447	419	465	461	598	33.8%

MIDWEST REGION: CARNEGIE (n=212).



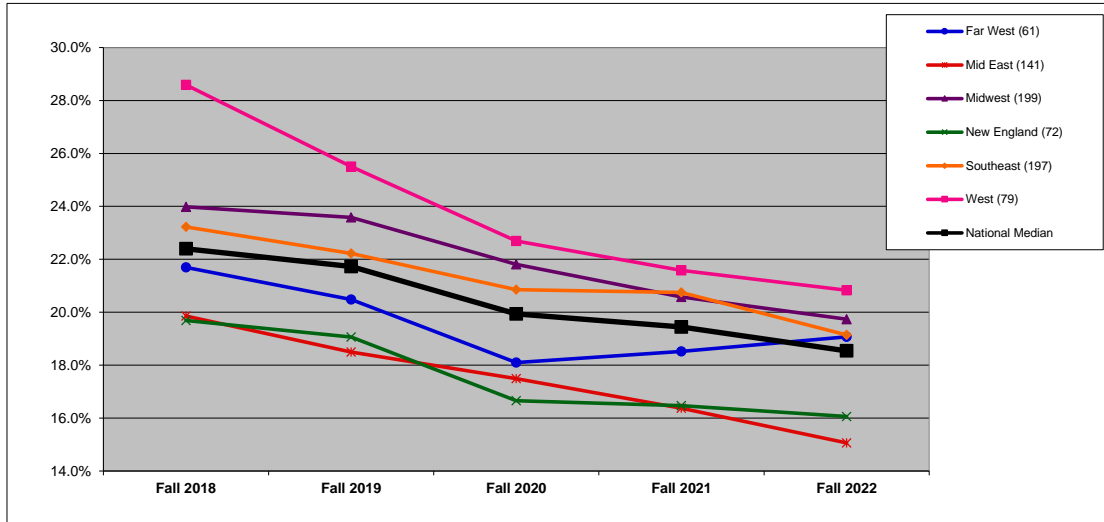
	Fall 2018	Fall 2019	Fall 2020	Fall 2021	Fall 2022	Y1 to Y5 Change
Doctoral (29)	453	449	460	496	413	-8.8%
MA-Large (39)	421	392	397	411	415	-1.4%
MA-Small/Medium (53)	320	326	294	272	257	-19.7%
BA-Arts & Sci (51)	393	377	372	375	363	-7.6%
BA-Diverse (40)	247	229	223	224	241	-2.4%
National Median	346	336	311	305	304	-12.1%
DOMINICAN	447	419	465	461	598	33.8%

ADMISSIONS YIELD RATE (%): BY REGION (3R)

DEFINITION: Percentage of admitted students who enrolled.

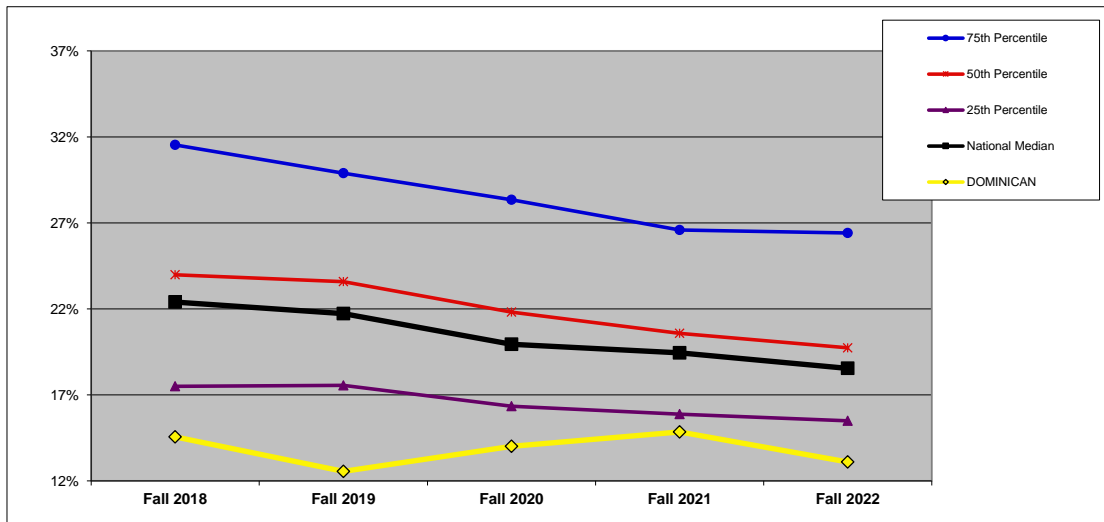
	Fall 2018	Fall 2019	Fall 2020	Fall 2021	Fall 2022
DOMINICAN	14.6%	12.6%	14.0%	14.8%	13.1%

NATIONAL (n=749). All data on this chart are presented as medians. See Introduction for description of regions.



	Fall 2018	Fall 2019	Fall 2020	Fall 2021	Fall 2022
Far West (61)	21.7%	20.5%	18.1%	18.5%	19.1%
Mid East (141)	19.9%	18.5%	17.5%	16.4%	15.1%
Midwest (199)	24.0%	23.6%	21.8%	20.6%	19.7%
New England (72)	19.7%	19.1%	16.7%	16.5%	16.1%
Southeast (197)	23.2%	22.2%	20.9%	20.7%	19.1%
West (79)	28.6%	25.5%	22.7%	21.6%	20.8%
National Median	22.4%	21.7%	19.9%	19.4%	18.5%

MIDWEST REGION (n=199). In addition to the median, which is the 50th percentile, this chart shows the 75th and 25th percentiles for the region.



	Fall 2018	Fall 2019	Fall 2020	Fall 2021	Fall 2022
75th Percentile	31.5%	29.9%	28.3%	26.6%	26.4%
50th Percentile	24.0%	23.6%	21.8%	20.6%	19.7%
25th Percentile	17.5%	17.6%	16.3%	15.9%	15.5%
National Median	22.4%	21.7%	19.9%	19.4%	18.5%
DOMINICAN	14.6%	12.6%	14.0%	14.8%	13.1%

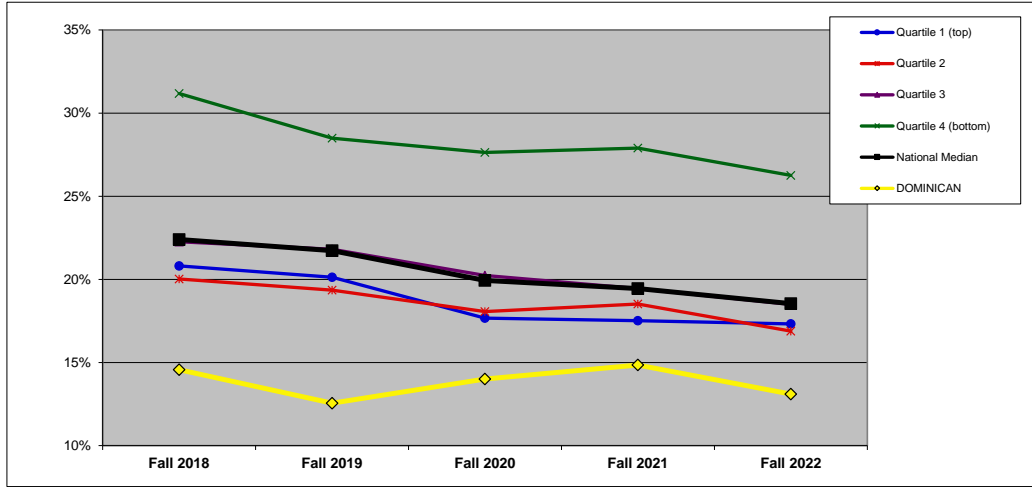
ADMISSIONS YIELD RATE (%): BY FINANCIAL RESOURCES (3F)

DEFINITION: Percentage of admitted students who enrolled. (All national and regional data are presented as medians.)

	Fall 2018	Fall 2019	Fall 2020	Fall 2021	Fall 2022
DOMINICAN	14.6%	12.6%	14.0%	14.8%	13.1%

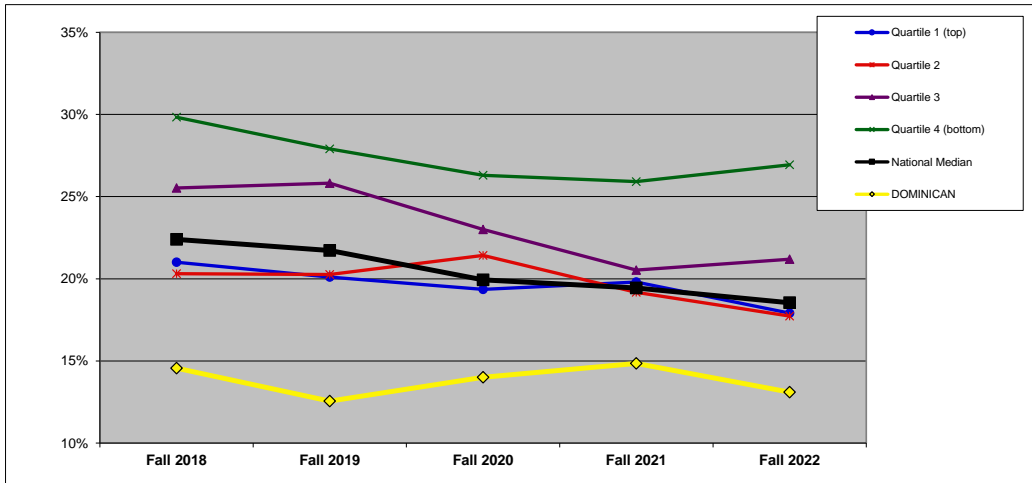
QUARTILES	
NATIONAL	2
REGIONAL	2

NATIONAL: FINANCIAL RESOURCES (n=749).



	Fall 2018	Fall 2019	Fall 2020	Fall 2021	Fall 2022
Quartile 1 (top)	20.8%	20.1%	17.7%	17.5%	17.3%
Quartile 2	20.0%	19.4%	18.1%	18.5%	16.9%
Quartile 3	22.3%	21.8%	20.2%	19.4%	18.5%
Quartile 4 (bottom)	31.2%	28.5%	27.6%	27.9%	26.3%
National Median	22.4%	21.7%	19.9%	19.4%	18.5%
DOMINICAN	14.6%	12.6%	14.0%	14.8%	13.1%

MIDWEST REGION: FINANCIAL RESOURCES (n=199).



	Fall 2018	Fall 2019	Fall 2020	Fall 2021	Fall 2022
Quartile 1 (top)	21.0%	20.1%	19.4%	19.8%	17.9%
Quartile 2	20.3%	20.3%	21.4%	19.2%	17.7%
Quartile 3	25.5%	25.8%	23.0%	20.5%	21.2%
Quartile 4 (bottom)	29.8%	27.9%	26.3%	25.9%	26.9%
National Median	22.4%	21.7%	19.9%	19.4%	18.5%
DOMINICAN	14.6%	12.6%	14.0%	14.8%	13.1%

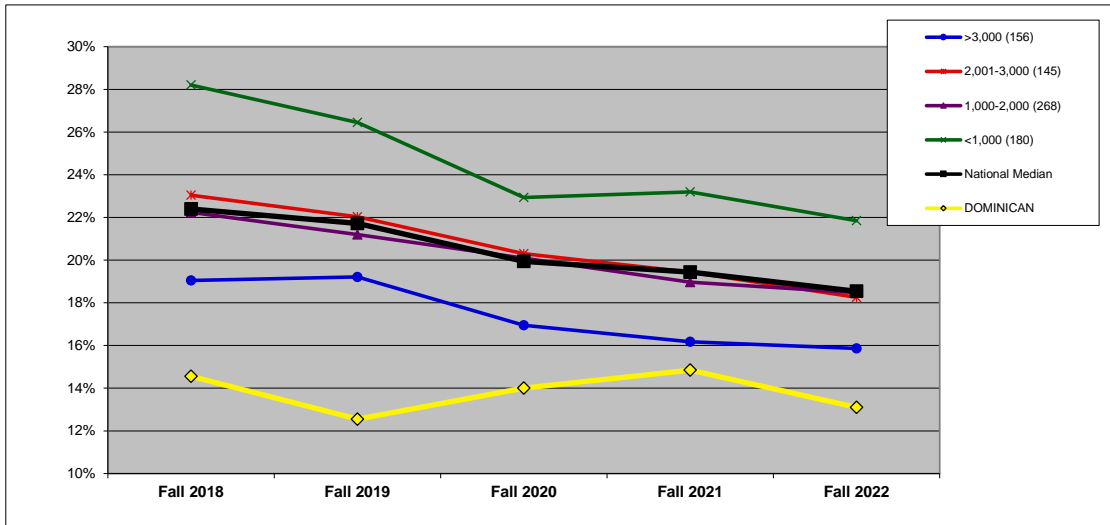
ADMISSIONS YIELD RATE (%): BY ENROLLMENT SIZE (3S)

DEFINITION: Percentage of admitted students who enrolled. (All national and regional data are presented as medians.)

	Fall 2018	Fall 2019	Fall 2020	Fall 2021	Fall 2022
DOMINICAN	14.6%	12.6%	14.0%	14.8%	13.1%

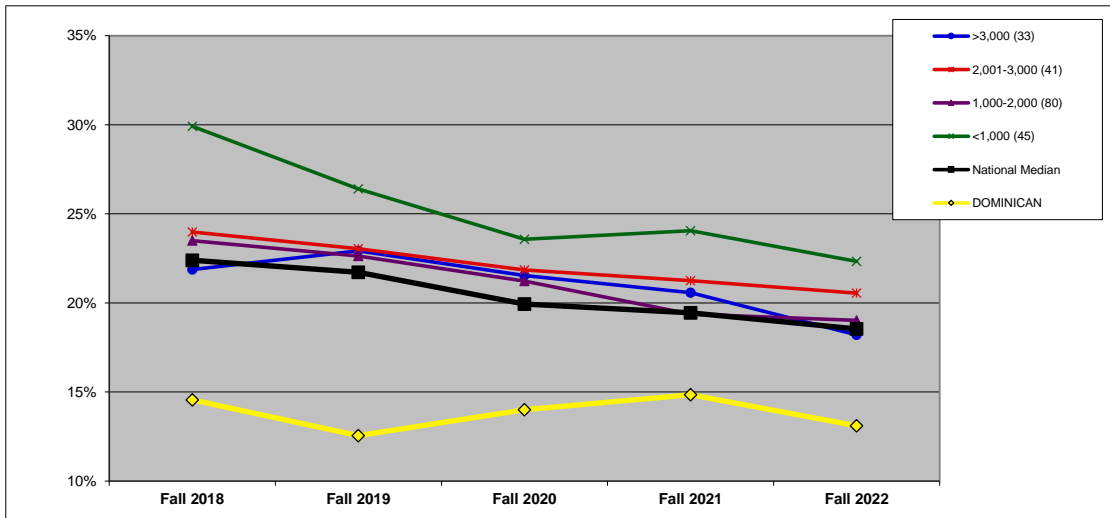
SIZE 2,001-3,000

NATIONAL: SIZE (n=749).



	Fall 2018	Fall 2019	Fall 2020	Fall 2021	Fall 2022
>3,000 (156)	19.1%	19.2%	16.9%	16.2%	15.9%
2,001-3,000 (145)	23.0%	22.0%	20.3%	19.4%	18.3%
1,000-2,000 (268)	22.2%	21.2%	20.1%	19.0%	18.5%
<1,000 (180)	28.2%	26.4%	22.9%	23.2%	21.8%
National Median	22.4%	21.7%	19.9%	19.4%	18.5%
DOMINICAN	14.6%	12.6%	14.0%	14.8%	13.1%

MIDWEST REGION: SIZE (n=199).



	Fall 2018	Fall 2019	Fall 2020	Fall 2021	Fall 2022
>3,000 (33)	21.9%	22.9%	21.5%	20.6%	18.2%
2,001-3,000 (41)	24.0%	23.0%	21.8%	21.3%	20.5%
1,000-2,000 (80)	23.5%	22.6%	21.2%	19.4%	19.0%
<1,000 (45)	29.9%	26.4%	23.6%	24.1%	22.3%
National Median	22.4%	21.7%	19.9%	19.4%	18.5%
DOMINICAN	14.6%	12.6%	14.0%	14.8%	13.1%

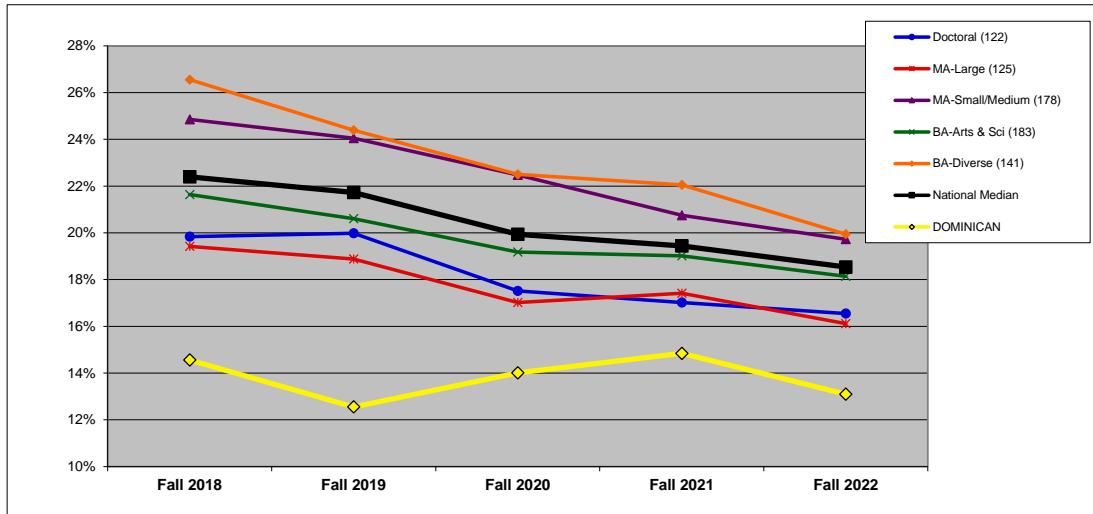
ADMISSIONS YIELD RATE (%): BY CARNEGIE CLASSIFICATION (3C)

DEFINITION: Percentage of admitted students who enrolled. See Introduction for information on the Carnegie classifications. (All national and regional data are presented as medians.)

	Fall 2018	Fall 2019	Fall 2020	Fall 2021	Fall 2022
DOMINICAN	14.6%	12.6%	14.0%	14.8%	13.1%

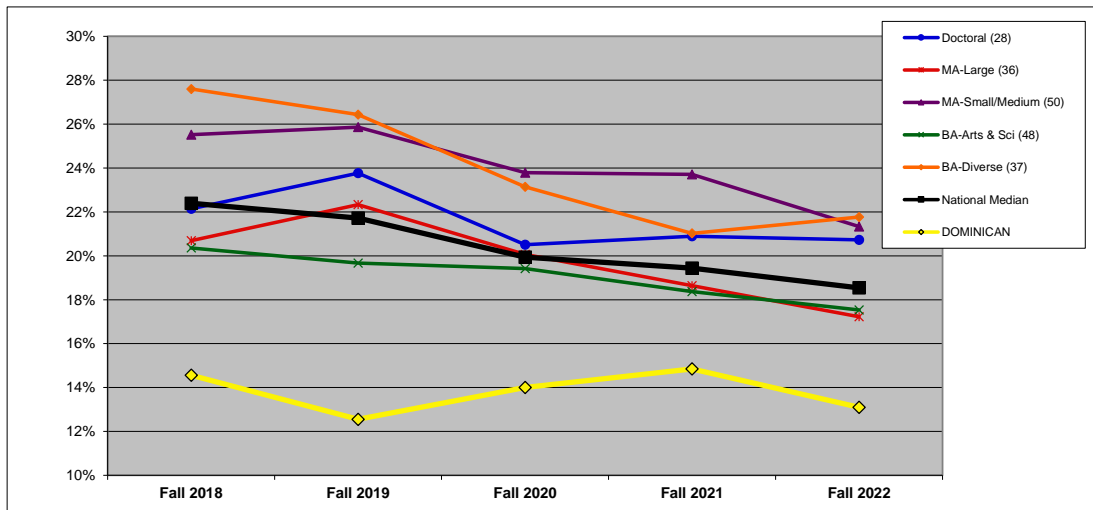
CARNEGIE MA-Larger

NATIONAL: CARNEGIE (n=749).



	Fall 2018	Fall 2019	Fall 2020	Fall 2021	Fall 2022
Doctoral (122)	19.8%	20.0%	17.5%	17.0%	16.5%
MA-Large (125)	19.4%	18.9%	17.0%	17.4%	16.1%
MA-Small/Medium (178)	24.9%	24.0%	22.5%	20.8%	19.7%
BA-Arts & Sci (183)	21.6%	20.6%	19.2%	19.0%	18.1%
BA-Diverse (141)	26.6%	24.4%	22.5%	22.1%	19.9%
National Median	22.4%	21.7%	19.9%	19.4%	18.5%
DOMINICAN	14.6%	12.6%	14.0%	14.8%	13.1%

MIDWEST REGION: CARNEGIE (n=199).



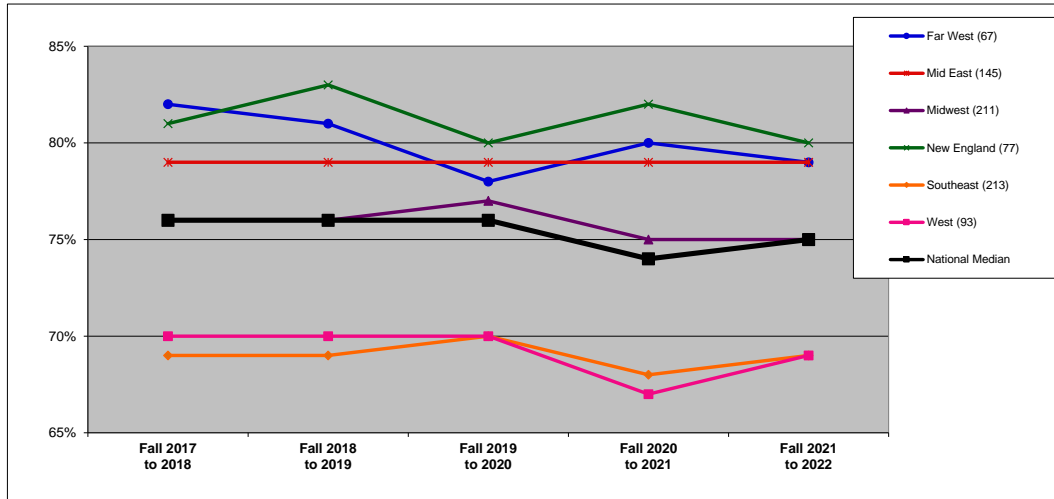
	Fall 2018	Fall 2019	Fall 2020	Fall 2021	Fall 2022
Doctoral (28)	22.1%	23.8%	20.5%	20.9%	20.7%
MA-Large (36)	20.7%	22.3%	20.1%	18.6%	17.2%
MA-Small/Medium (50)	25.5%	25.9%	23.8%	23.7%	21.3%
BA-Arts & Sci (48)	20.4%	19.7%	19.4%	18.4%	17.5%
BA-Diverse (37)	27.6%	26.4%	23.1%	21.0%	21.8%
National Median	22.4%	21.7%	19.9%	19.4%	18.5%
DOMINICAN	14.6%	12.6%	14.0%	14.8%	13.1%

RETENTION RATE (%): BY REGION (4R)

DEFINITION: The first to second year retention rate is the percentage of the fall full-time cohort (minus exclusions) that re-enrolled at the institution as either full- or part-time students in the fall of the next year.

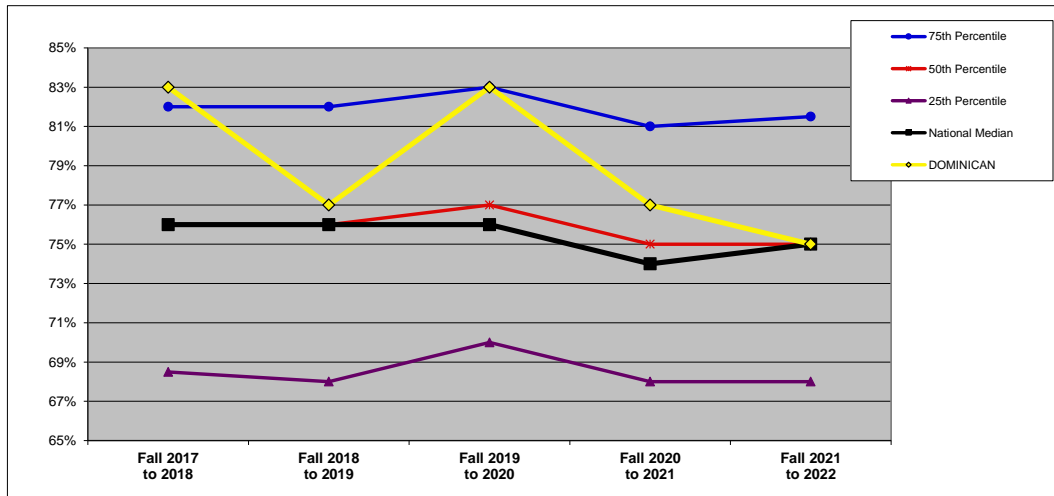
	Fall 2017 to 2018	Fall 2018 to 2019	Fall 2019 to 2020	Fall 2020 to 2021	Fall 2021 to 2022
DOMINICAN	83%	77%	83%	77%	75%

NATIONAL (n=806). All data on this chart are presented as medians. See Introduction for description of regions.



	Fall 2017 to 2018	Fall 2018 to 2019	Fall 2019 to 2020	Fall 2020 to 2021	Fall 2021 to 2022
Far West (67)	82%	81%	78%	80%	79%
Mid East (145)	79%	79%	79%	79%	79%
Midwest (211)	76%	76%	77%	75%	75%
New England (77)	81%	83%	80%	82%	80%
Southeast (213)	69%	69%	70%	68%	69%
West (93)	70%	70%	70%	67%	69%
National Median	76%	76%	76%	74%	75%

MIDWEST REGION (n=211). In addition to the median, which is the 50th percentile, this chart shows the 75th and 25th percentiles for the region.



	Fall 2017 to 2018	Fall 2018 to 2019	Fall 2019 to 2020	Fall 2020 to 2021	Fall 2021 to 2022
75th Percentile	82%	82%	83%	81%	82%
50th Percentile	76%	76%	77%	75%	75%
25th Percentile	69%	68%	70%	68%	68%
National Median	76%	76%	76%	74%	75%
DOMINICAN	83%	77%	83%	77%	75%

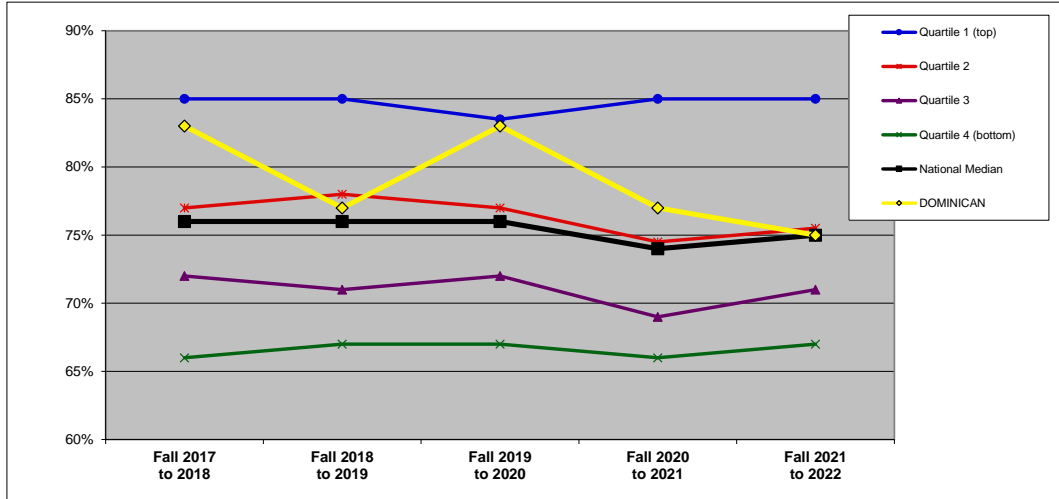
RETENTION RATE (%): BY FINANCIAL RESOURCES (4F)

DEFINITION: The first to second year retention rate is the percentage of the fall full-time cohort (minus exclusions) that re-enrolled at the institution as either full- or part-time students in the fall of the next year. (All national and regional data are presented as medians.)

	Fall 2017 to 2018	Fall 2018 to 2019	Fall 2019 to 2020	Fall 2020 to 2021	Fall 2021 to 2022
DOMINICAN	83%	77%	83%	77%	75%

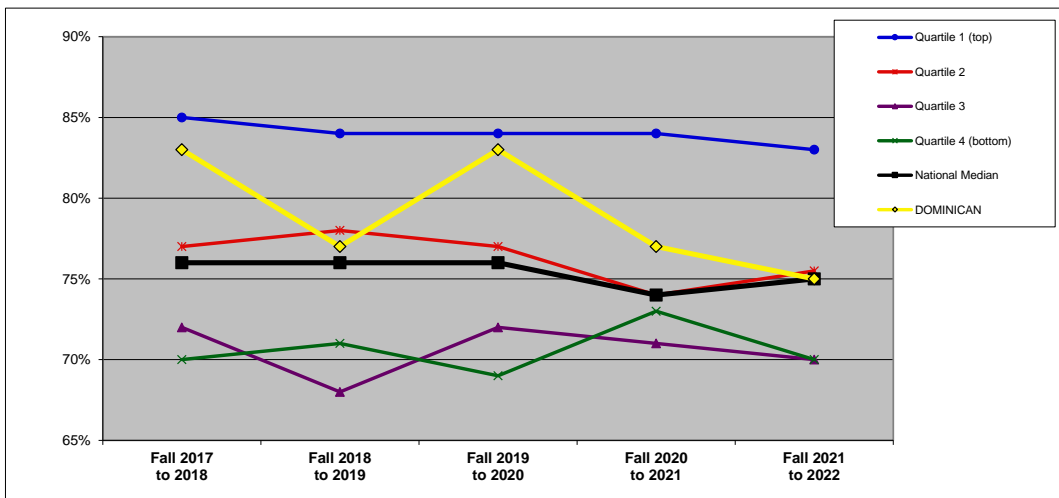
QUARTILES	
NATIONAL	2
REGIONAL	2

NATIONAL: FINANCIAL RESOURCES (n=806).



	Fall 2017 to 2018	Fall 2018 to 2019	Fall 2019 to 2020	Fall 2020 to 2021	Fall 2021 to 2022
Quartile 1 (top)	85%	85%	84%	85%	85%
Quartile 2	77%	78%	77%	75%	76%
Quartile 3	72%	71%	72%	69%	71%
Quartile 4 (bottom)	66%	67%	67%	66%	67%
National Median	76%	76%	76%	74%	75%
DOMINICAN	83%	77%	83%	77%	75%

MIDWEST REGION: FINANCIAL RESOURCES (n=211).



	Fall 2017 to 2018	Fall 2018 to 2019	Fall 2019 to 2020	Fall 2020 to 2021	Fall 2021 to 2022
Quartile 1 (top)	85%	84%	84%	84%	83%
Quartile 2	77%	78%	77%	74%	76%
Quartile 3	72%	68%	72%	71%	70%
Quartile 4 (bottom)	70%	71%	69%	73%	70%
National Median	76%	76%	76%	74%	75%
DOMINICAN	83%	77%	83%	77%	75%

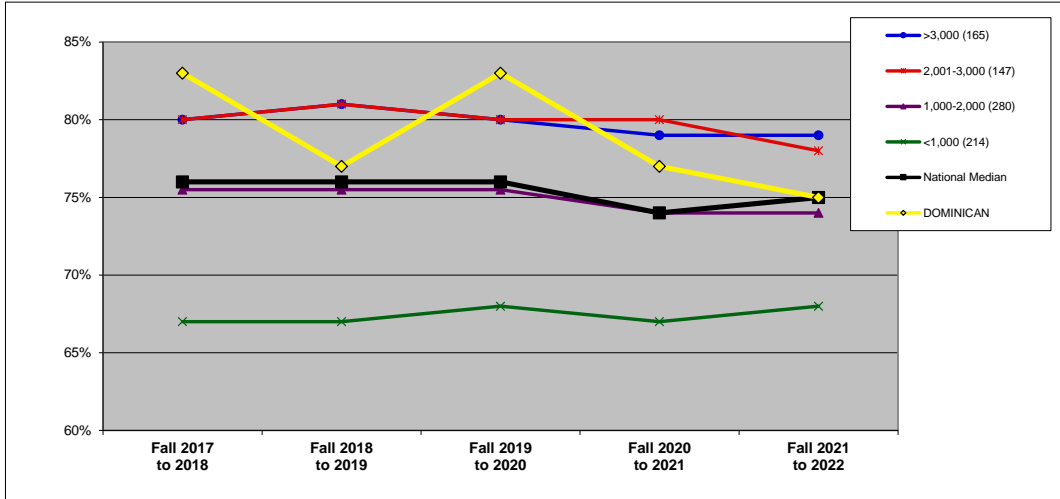
RETENTION RATE (%): BY ENROLLMENT SIZE (4S)

DEFINITION: The first to second year retention rate is the percentage of the fall full-time cohort (minus exclusions) that re-enrolled at the institution as either full- or part-time students in the fall of the next year. (All national and regional data are presented as medians.)

	Fall 2017 to 2018	Fall 2018 to 2019	Fall 2019 to 2020	Fall 2020 to 2021	Fall 2021 to 2022
DOMINICAN	83%	77%	83%	77%	75%

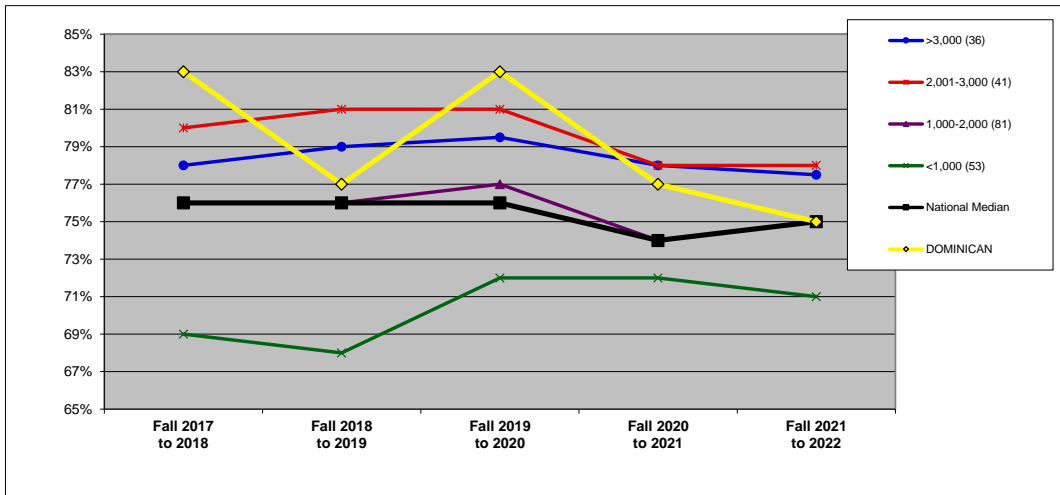
SIZE 2,001-3,000

NATIONAL: SIZE (n=806).



	Fall 2017 to 2018	Fall 2018 to 2019	Fall 2019 to 2020	Fall 2020 to 2021	Fall 2021 to 2022
>3,000 (165)	80%	81%	80%	79%	79%
2,001-3,000 (147)	80%	81%	80%	80%	78%
1,000-2,000 (280)	76%	76%	76%	74%	74%
<1,000 (214)	67%	67%	68%	67%	68%
National Median	76%	76%	76%	74%	75%
DOMINICAN	83%	77%	83%	77%	75%

MIDWEST REGION: SIZE (n=211).



	Fall 2017 to 2018	Fall 2018 to 2019	Fall 2019 to 2020	Fall 2020 to 2021	Fall 2021 to 2022
>3,000 (36)	78%	79%	80%	78%	78%
2,001-3,000 (41)	80%	81%	81%	78%	78%
1,000-2,000 (81)	76%	76%	77%	74%	75%
<1,000 (53)	69%	68%	72%	72%	71%
National Median	76%	76%	76%	74%	75%
DOMINICAN	83%	77%	83%	77%	75%

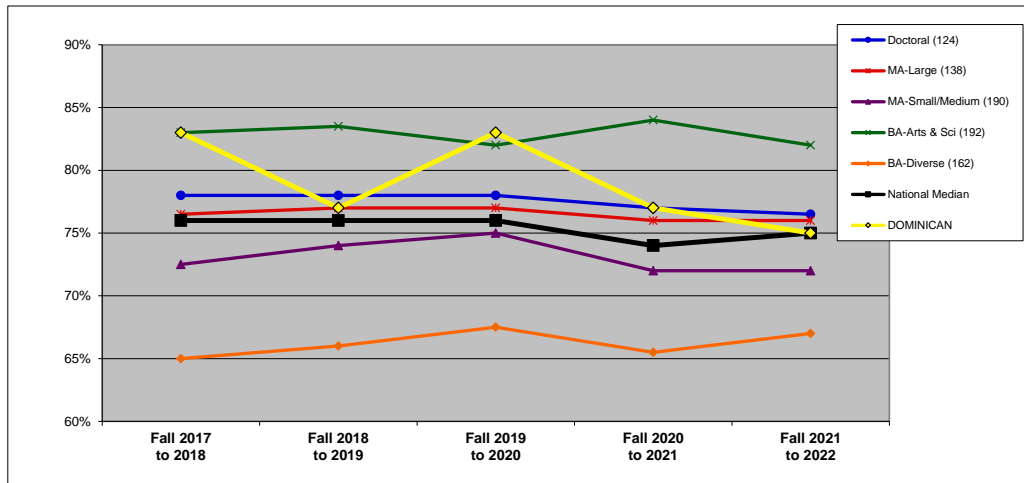
RETENTION RATE (%): BY CARNEGIE CLASSIFICATION (4C)

DEFINITION: The first to second year retention rate is the percentage of the fall full-time cohort (minus exclusions) that re-enrolled at the institution as either full- or part-time students in the fall of the next year. See Introduction for information on the Carnegie classifications. (All national and regional data are presented as medians.)

	Fall 2017 to 2018	Fall 2018 to 2019	Fall 2019 to 2020	Fall 2020 to 2021	Fall 2021 to 2022
DOMINICAN	83%	77%	83%	77%	75%

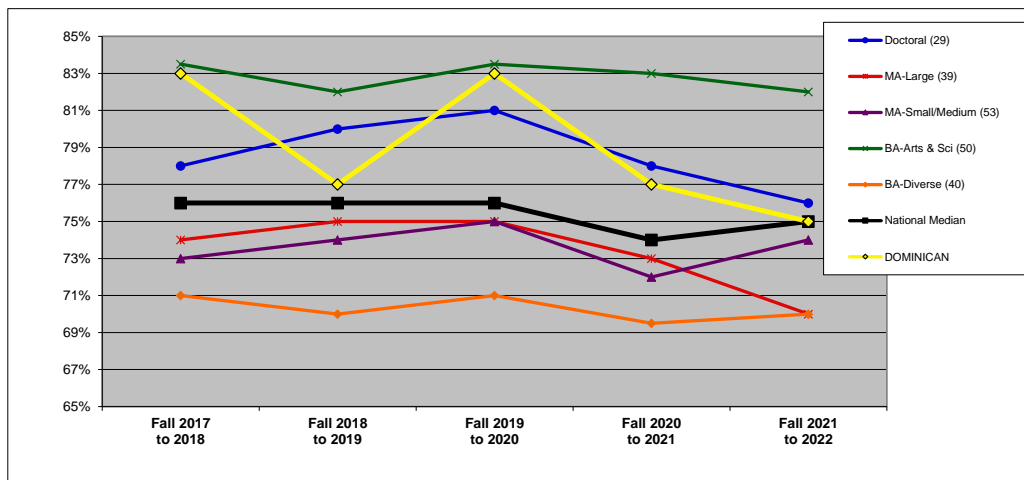
CARNEGIE MA-Larger

NATIONAL: CARNEGIE (n=806).



	Fall 2017 to 2018	Fall 2018 to 2019	Fall 2019 to 2020	Fall 2020 to 2021	Fall 2021 to 2022
Doctoral (124)	78%	78%	78%	77%	77%
MA-Large (138)	77%	77%	77%	76%	76%
MA-Small/Medium (190)	73%	74%	75%	72%	72%
BA-Arts & Sci (192)	83%	84%	82%	84%	82%
BA-Diverse (162)	65%	66%	68%	66%	67%
National Median	76%	76%	76%	74%	75%
DOMINICAN	83%	77%	83%	77%	75%

MIDWEST REGION: CARNEGIE (n=211).



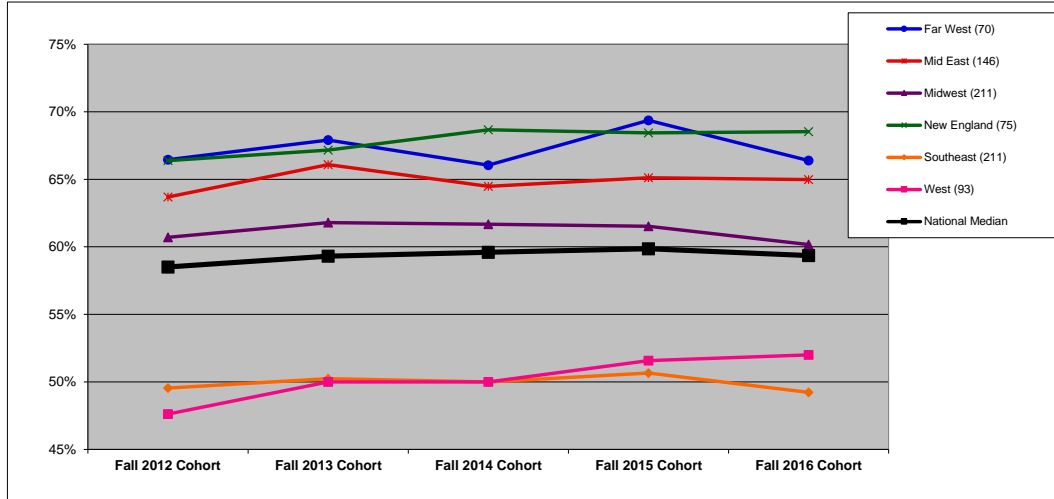
	Fall 2017 to 2018	Fall 2018 to 2019	Fall 2019 to 2020	Fall 2020 to 2021	Fall 2021 to 2022
Doctoral (29)	78%	80%	81%	78%	76%
MA-Large (39)	74%	75%	75%	73%	70%
MA-Small/Medium (53)	73%	74%	75%	72%	74%
BA-Arts & Sci (50)	84%	82%	84%	83%	82%
BA-Diverse (40)	71%	70%	71%	70%	70%
National Median	76%	76%	76%	74%	75%
DOMINICAN	83%	77%	83%	77%	75%

GRADUATION RATE (%): BY REGION (5R)

DEFINITION: The six-year, cohort graduation rate for full-time, first-time degree-seeking undergraduate students. For example, the Fall 2016 Cohort rate is the percentage that graduated by end of Summer 2022.

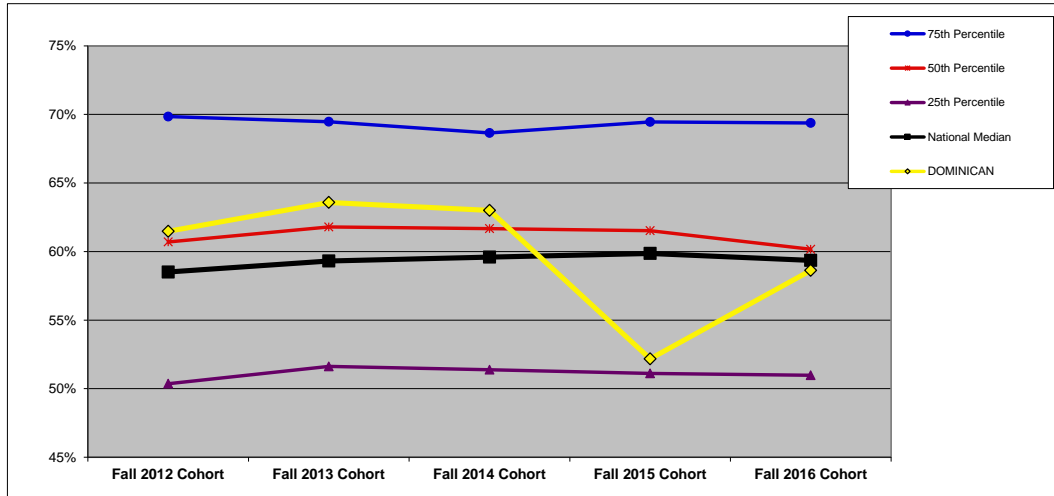
	Fall 2012 Cohort	Fall 2013 Cohort	Fall 2014 Cohort	Fall 2015 Cohort	Fall 2016 Cohort
DOMINICAN	61.5%	63.6%	63.0%	52.2%	58.6%

NATIONAL (n=806). All data on this chart are presented as medians. See Introduction for description of regions.



	Fall 2012 Cohort	Fall 2013 Cohort	Fall 2014 Cohort	Fall 2015 Cohort	Fall 2016 Cohort
Far West (70)	66.4%	67.9%	66.1%	69.4%	66.4%
Mid East (146)	63.7%	66.1%	64.5%	65.1%	65.0%
Midwest (211)	60.7%	61.8%	61.7%	61.5%	60.2%
New England (75)	66.4%	67.2%	68.7%	68.4%	68.5%
Southeast (211)	49.5%	50.2%	50.0%	50.7%	49.2%
West (93)	47.6%	50.0%	50.0%	51.6%	52.0%
National Median	58.5%	59.3%	59.6%	59.9%	59.3%

MIDWEST REGION (n=211). In addition to the median, which is the 50th percentile, this chart shows the 75th and 25th percentiles for the region.



	Fall 2012 Cohort	Fall 2013 Cohort	Fall 2014 Cohort	Fall 2015 Cohort	Fall 2016 Cohort
75th Percentile	69.8%	69.5%	68.7%	69.5%	69.4%
50th Percentile	60.7%	61.8%	61.7%	61.5%	60.2%
25th Percentile	50.4%	51.6%	51.4%	51.1%	51.0%
National Median	58.5%	59.3%	59.6%	59.9%	59.3%
DOMINICAN	61.5%	63.6%	63.0%	52.2%	58.6%

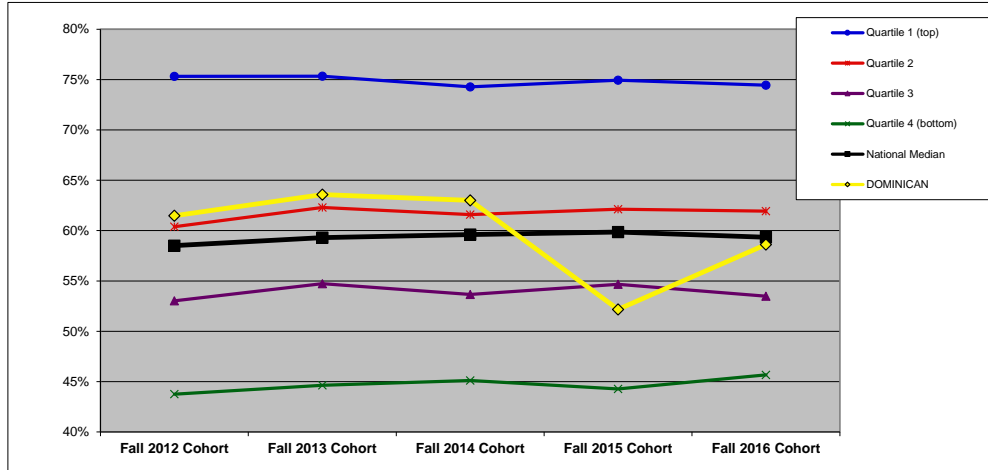
GRADUATION RATE (%): BY FINANCIAL RESOURCES (5F)

DEFINITION: The six-year, cohort graduation rate for full-time, first-time degree-seeking undergraduate students. For example, the Fall 2016 Cohort rate is the percentage that graduated by end of Summer 2022. (All national and regional data are presented as medians.)

DOMINICAN	Fall 2012 Cohort	Fall 2013 Cohort	Fall 2014 Cohort	Fall 2015 Cohort	Fall 2016 Cohort
	61.5%	63.6%	63.0%	52.2%	58.6%

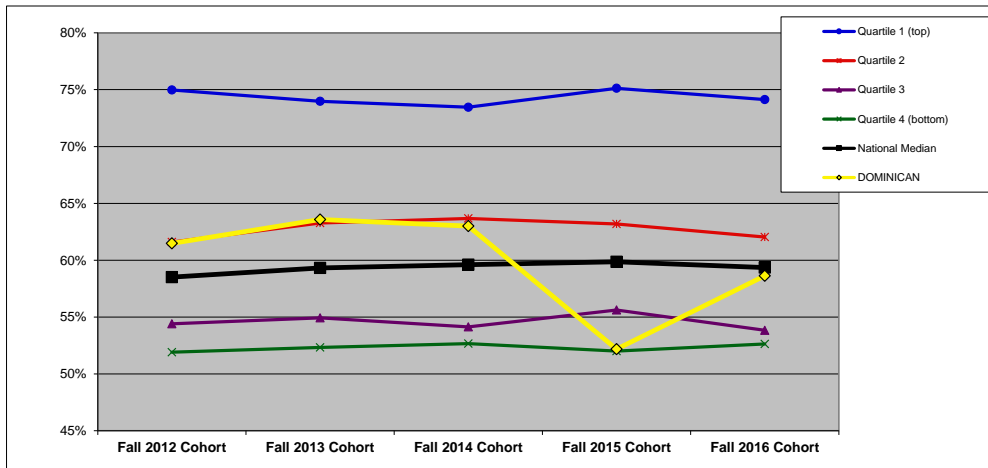
QUARTILES	
NATIONAL	2
REGIONAL	2

NATIONAL: FINANCIAL RESOURCES (n=806).



	Fall 2012 Cohort	Fall 2013 Cohort	Fall 2014 Cohort	Fall 2015 Cohort	Fall 2016 Cohort
Quartile 1 (top)	75.3%	75.3%	74.3%	74.9%	74.4%
Quartile 2	60.4%	62.3%	61.6%	62.1%	61.9%
Quartile 3	53.0%	54.7%	53.7%	54.7%	53.5%
Quartile 4 (bottom)	43.8%	44.6%	45.1%	44.3%	45.7%
National Median	58.5%	59.3%	59.6%	59.9%	59.3%
DOMINICAN	61.5%	63.6%	63.0%	52.2%	58.6%

MIDWEST REGION: FINANCIAL RESOURCES (n=211).



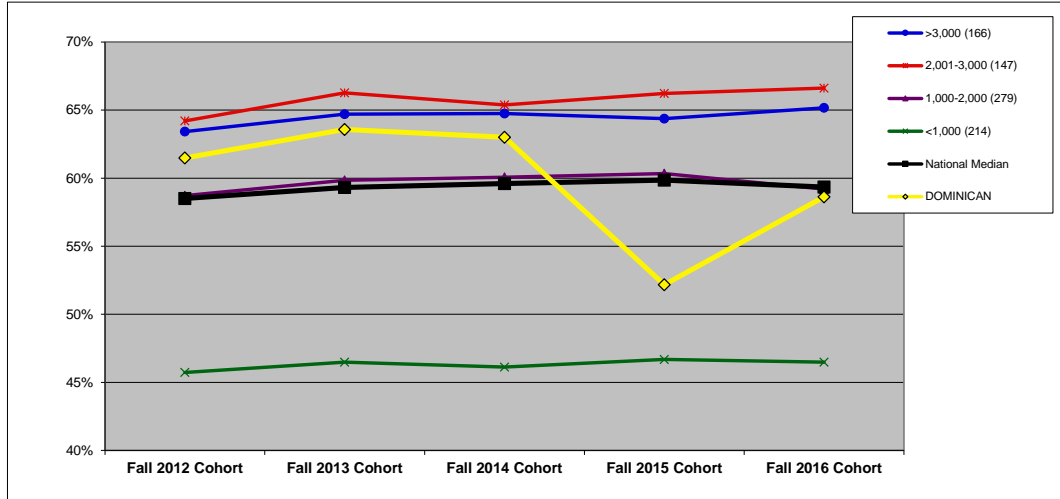
	Fall 2012 Cohort	Fall 2013 Cohort	Fall 2014 Cohort	Fall 2015 Cohort	Fall 2016 Cohort
Quartile 1 (top)	75.0%	74.0%	73.5%	75.1%	74.1%
Quartile 2	61.6%	63.3%	63.7%	63.2%	62.0%
Quartile 3	54.4%	54.9%	54.1%	55.6%	53.8%
Quartile 4 (bottom)	51.9%	52.3%	52.7%	52.0%	52.6%
National Median	58.5%	59.3%	59.6%	59.9%	59.3%
DOMINICAN	61.5%	63.6%	63.0%	52.2%	58.6%

GRADUATION RATE (%): BY ENROLLMENT SIZE (5S)

DEFINITION: The six-year, cohort graduation rate for full-time, first-time degree-seeking undergraduate students. For example, the Fall 2016 Cohort rate is the percentage that graduated by end of Summer 2022. (All national and regional data are presented as medians.)

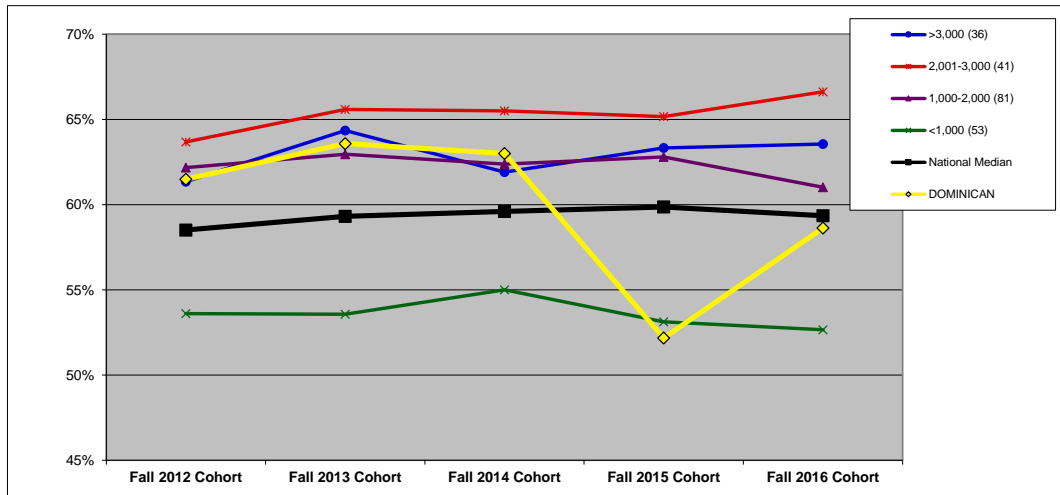
	Fall 2012 Cohort	Fall 2013 Cohort	Fall 2014 Cohort	Fall 2015 Cohort	Fall 2016 Cohort	SIZE
DOMINICAN	61.5%	63.6%	63.0%	52.2%	58.6%	2,001-3,000

NATIONAL: SIZE (n=806).



	Fall 2012 Cohort	Fall 2013 Cohort	Fall 2014 Cohort	Fall 2015 Cohort	Fall 2016 Cohort
>3,000 (166)	63.4%	64.7%	64.8%	64.4%	65.2%
2,001-3,000 (147)	64.2%	66.3%	65.4%	66.2%	66.6%
1,000-2,000 (279)	58.7%	59.8%	60.1%	60.3%	59.2%
<1,000 (214)	45.7%	46.5%	46.1%	46.7%	46.5%
National Median	58.5%	59.3%	59.6%	59.9%	59.3%
DOMINICAN	61.5%	63.6%	63.0%	52.2%	58.6%

MIDWEST REGION: SIZE (n=211).



	Fall 2012 Cohort	Fall 2013 Cohort	Fall 2014 Cohort	Fall 2015 Cohort	Fall 2016 Cohort
>3,000 (36)	61.3%	64.3%	61.9%	63.3%	63.6%
2,001-3,000 (41)	63.7%	65.6%	65.5%	65.2%	66.6%
1,000-2,000 (81)	62.2%	63.0%	62.4%	62.8%	61.0%
<1,000 (53)	53.6%	53.6%	55.0%	53.1%	52.7%
National Median	58.5%	59.3%	59.6%	59.9%	59.3%
DOMINICAN	61.5%	63.6%	63.0%	52.2%	58.6%

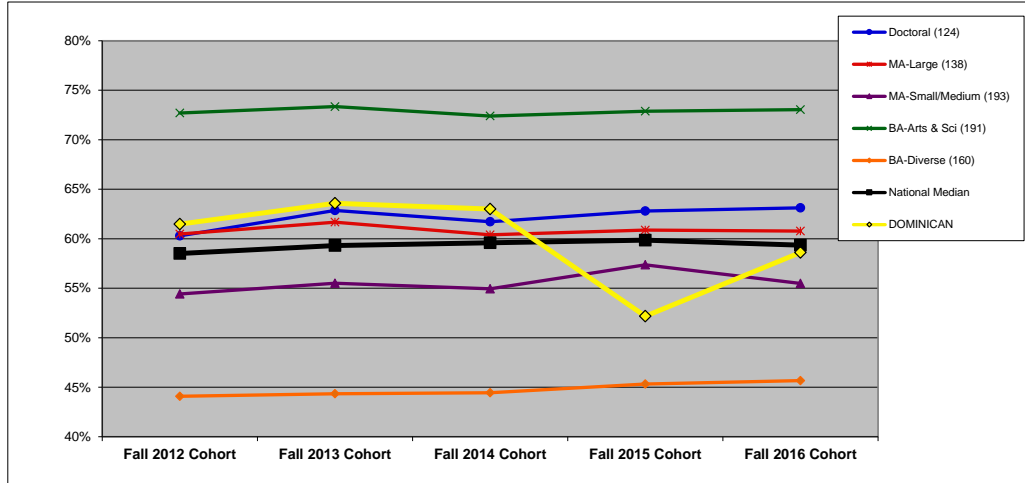
GRADUATION RATE (%): BY CARNEGIE CLASSIFICATION (5C)

DEFINITION: The six-year, cohort graduation rate for full-time, first-time degree-seeking undergraduate students. For example, the Fall 2016 Cohort rate is the percentage that graduated by end of Summer 2022. See Introduction for information on the Carnegie classifications. (All national and regional data are presented as medians.)

	Fall 2012 Cohort	Fall 2013 Cohort	Fall 2014 Cohort	Fall 2015 Cohort	Fall 2016 Cohort
DOMINICAN	61.5%	63.6%	63.0%	52.2%	58.6%

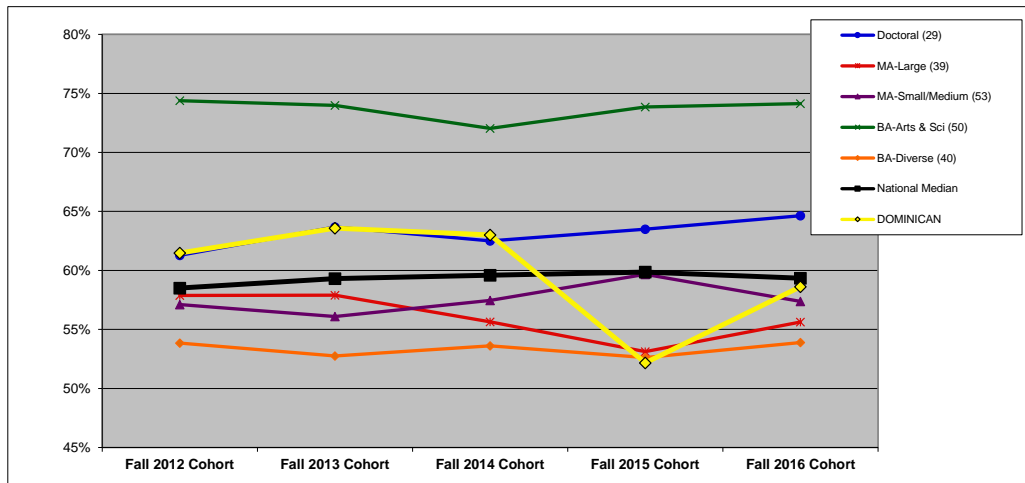
CARNEGIE MA-Larger

NATIONAL: CARNEGIE (n=806).



	Fall 2012 Cohort	Fall 2013 Cohort	Fall 2014 Cohort	Fall 2015 Cohort	Fall 2016 Cohort
Doctoral (124)	60.3%	62.9%	61.7%	62.8%	63.1%
MA-Large (138)	60.5%	61.7%	60.4%	60.9%	60.8%
MA-Small/Medium (193)	54.4%	55.5%	54.9%	57.4%	55.5%
BA-Arts & Sci (191)	72.7%	73.4%	72.4%	72.9%	73.0%
BA-Diverse (160)	44.1%	44.3%	44.4%	45.3%	45.7%
National Median	58.5%	59.3%	59.6%	59.9%	59.3%
DOMINICAN	61.5%	63.6%	63.0%	52.2%	58.6%

MIDWEST REGION: CARNEGIE (n=211).



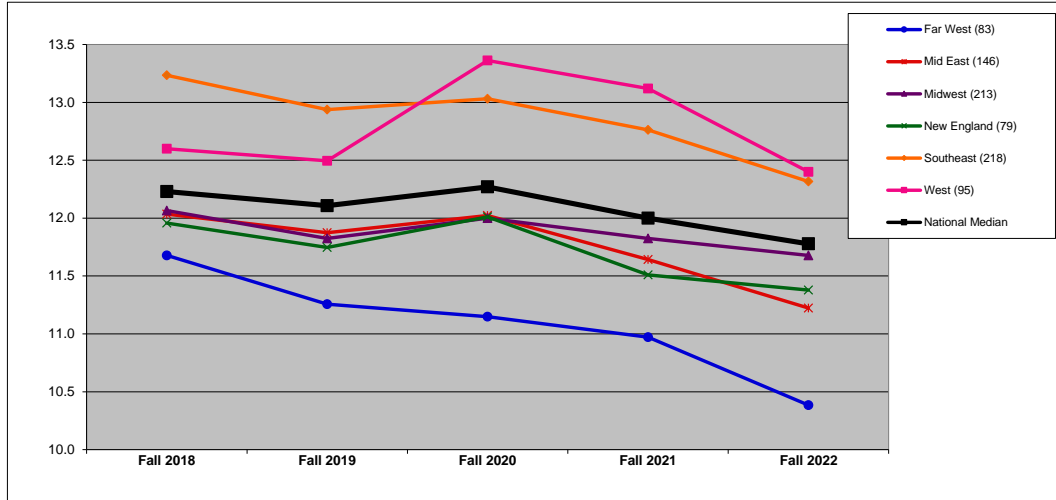
	Fall 2012 Cohort	Fall 2013 Cohort	Fall 2014 Cohort	Fall 2015 Cohort	Fall 2016 Cohort
Doctoral (29)	61.3%	63.7%	62.5%	63.5%	64.6%
MA-Large (39)	57.9%	57.9%	55.7%	53.1%	55.6%
MA-Small/Medium (53)	57.1%	56.1%	57.5%	59.7%	57.4%
BA-Arts & Sci (50)	74.4%	74.0%	72.0%	73.9%	74.1%
BA-Diverse (40)	53.8%	52.8%	53.6%	52.6%	53.9%
National Median	58.5%	59.3%	59.6%	59.9%	59.3%
DOMINICAN	61.5%	63.6%	63.0%	52.2%	58.6%

STUDENT/FACULTY RATIO: BY REGION (6R)

DEFINITION: Total fall full-time equivalent (FTE) enrollment, including undergraduate, graduate, and first-professional students, divided by instructional faculty FTE.

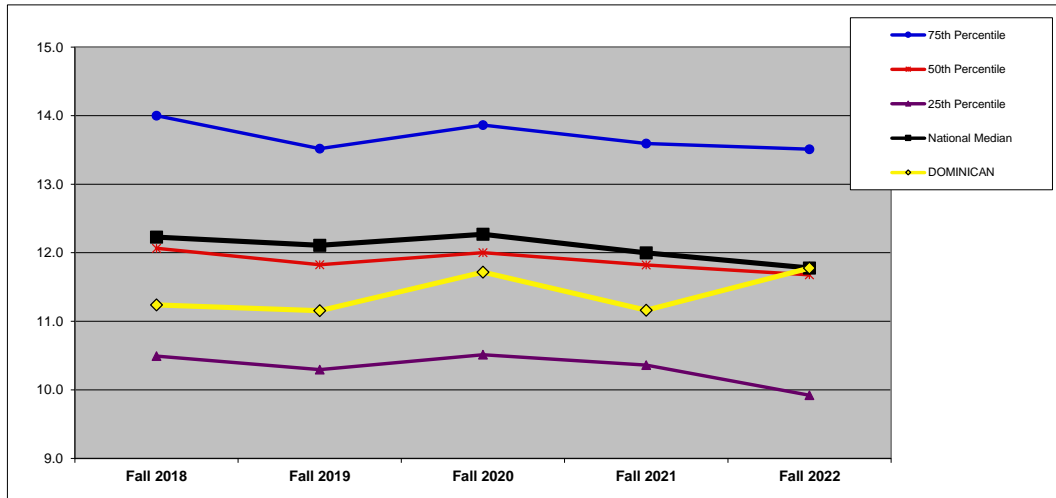
	Fall 2018	Fall 2019	Fall 2020	Fall 2021	Fall 2022	Y1 to Y5 Change
DOMINICAN	11.2	11.2	11.7	11.2	11.8	4.8%

NATIONAL (n=834). All data on this chart are presented as medians. See Introduction for description of regions.



	Fall 2018	Fall 2019	Fall 2020	Fall 2021	Fall 2022	Y1 to Y5 Change
Far West (83)	11.7	11.3	11.1	11.0	10.4	-11.1%
Mid East (146)	12.0	11.9	12.0	11.6	11.2	-6.7%
Midwest (213)	12.1	11.8	12.0	11.8	11.7	-3.2%
New England (79)	12.0	11.7	12.0	11.5	11.4	-4.8%
Southeast (218)	13.2	12.9	13.0	12.8	12.3	-6.9%
West (95)	12.6	12.5	13.4	13.1	12.4	-1.6%
National Median	12.2	12.1	12.3	12.0	11.8	-3.7%

MIDWEST REGION (n=213). In addition to the median, which is the 50th percentile, this chart shows the 75th and 25th percentiles for the region.



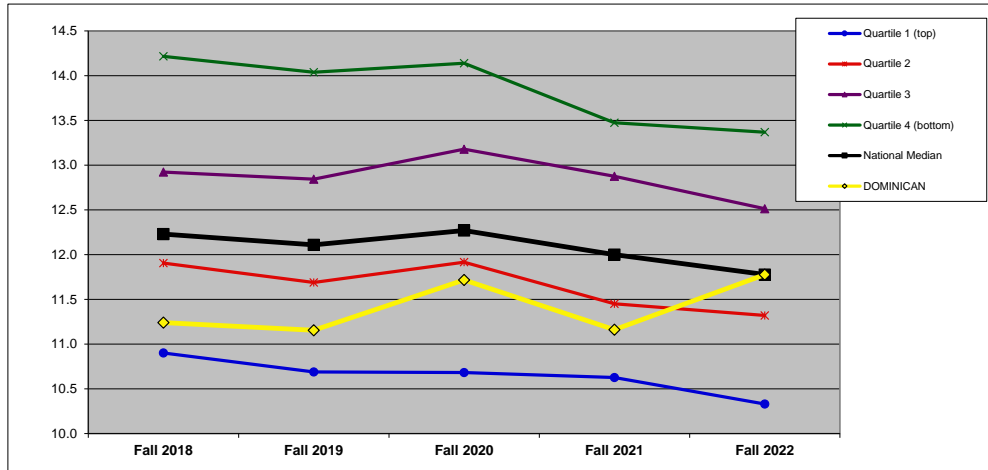
	Fall 2018	Fall 2019	Fall 2020	Fall 2021	Fall 2022	Y1 to Y5 Change
75th Percentile	14.0	13.5	13.9	13.6	13.5	-3.5%
50th Percentile	12.1	11.8	12.0	11.8	11.7	-3.2%
25th Percentile	10.5	10.3	10.5	10.4	9.9	-5.4%
National Median	12.2	12.1	12.3	12.0	11.8	-3.7%
DOMINICAN	11.2	11.2	11.7	11.2	11.8	4.8%

STUDENT/FACULTY RATIO: BY FINANCIAL RESOURCES (6F)

DEFINITION: Total fall full-time equivalent (FTE) enrollment, including undergraduate, graduate, and first-professional students, divided by instructional faculty FTE. (All national and regional data are presented as medians.)

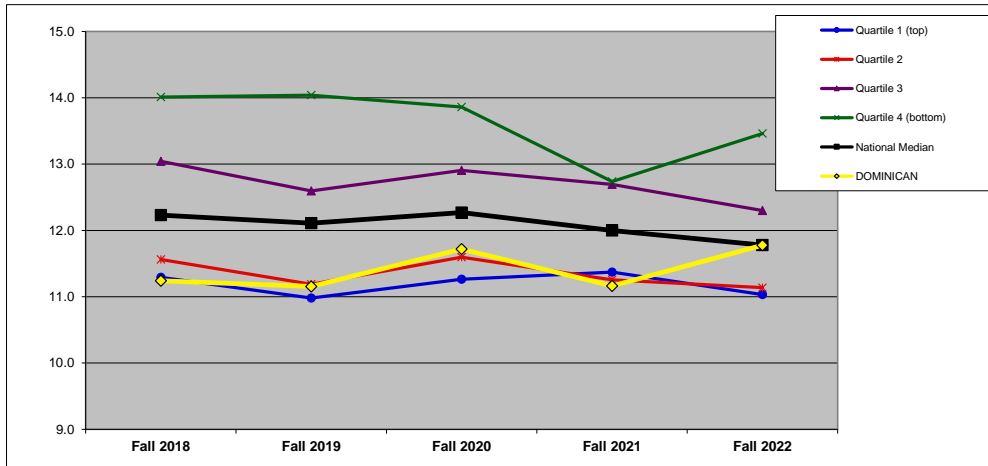
DOMINICAN	Fall 2018	Fall 2019	Fall 2020	Fall 2021	Fall 2022	Y1 to Y5 Change	QUARTILES	
		11.2	11.2	11.7	11.2	11.8	4.8%	NATIONAL
							REGIONAL	2

NATIONAL: FINANCIAL RESOURCES (n=834).



	Fall 2018	Fall 2019	Fall 2020	Fall 2021	Fall 2022	Y1 to Y5 Change
	Quartile 1 (top)	10.9	10.7	10.7	10.6	10.3
Quartile 2	11.9	11.7	11.9	11.4	11.3	-4.9%
Quartile 3	12.9	12.8	13.2	12.9	12.5	-3.2%
Quartile 4 (bottom)	14.2	14.0	14.1	13.5	13.4	-6.0%
National Median	12.2	12.1	12.3	12.0	11.8	-3.7%
DOMINICAN	11.2	11.2	11.7	11.2	11.8	4.8%

MIDWEST REGION: FINANCIAL RESOURCES (n=213).



	Fall 2018	Fall 2019	Fall 2020	Fall 2021	Fall 2022	Y1 to Y5 Change
	Quartile 1 (top)	11.3	11.0	11.3	11.4	11.0
Quartile 2	11.6	11.2	11.6	11.3	11.1	-3.7%
Quartile 3	13.0	12.6	12.9	12.7	12.3	-5.7%
Quartile 4 (bottom)	14.0	14.0	13.9	12.7	13.5	-3.9%
National Median	12.2	12.1	12.3	12.0	11.8	-3.7%
DOMINICAN	11.2	11.2	11.7	11.2	11.8	4.8%

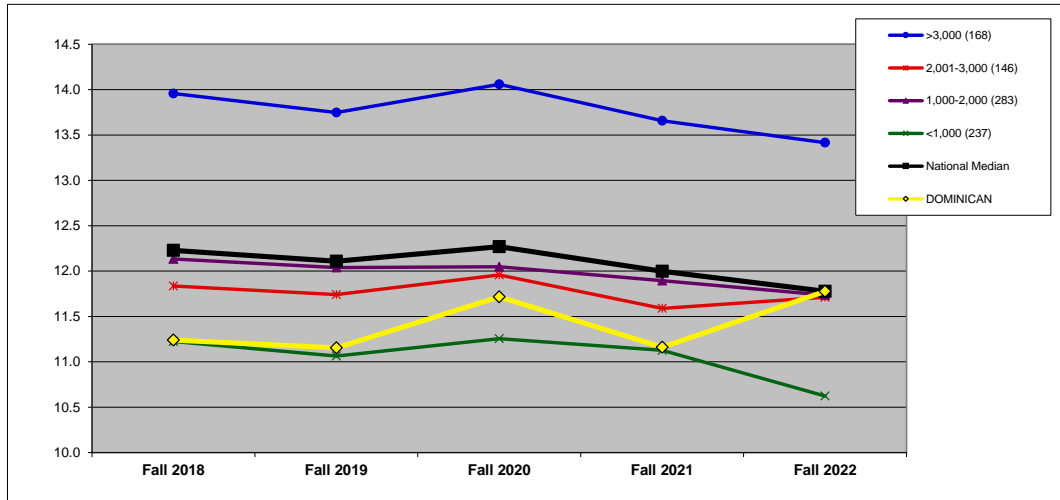
STUDENT/FACULTY RATIO: BY ENROLLMENT SIZE (6S)

DEFINITION: Total fall full-time equivalent (FTE) enrollment, including undergraduate, graduate, and first-professional students, divided by instructional faculty FTE. (All national and regional data are presented as medians.)

	Fall 2018	Fall 2019	Fall 2020	Fall 2021	Fall 2022	Y1 to Y5 Change
DOMINICAN	11.2	11.2	11.7	11.2	11.8	4.8%

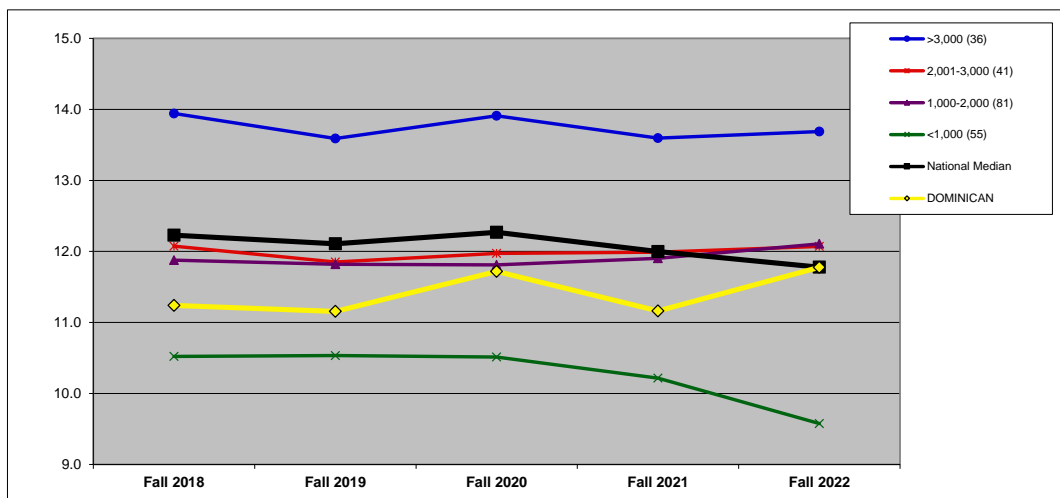
SIZE 2,001-3,000

NATIONAL: SIZE (n=834).



	Fall 2018	Fall 2019	Fall 2020	Fall 2021	Fall 2022	Y1 to Y5 Change
>3,000 (168)	14.0	13.7	14.1	13.7	13.4	-3.9%
2,001-3,000 (146)	11.8	11.7	12.0	11.6	11.7	-1.0%
1,000-2,000 (283)	12.1	12.0	12.0	11.9	11.7	-3.3%
<1,000 (237)	11.2	11.1	11.3	11.1	10.6	-5.4%
National Median	12.2	12.1	12.3	12.0	11.8	-3.7%
DOMINICAN	11.2	11.2	11.7	11.2	11.8	4.8%

MIDWEST REGION: SIZE (n=213).



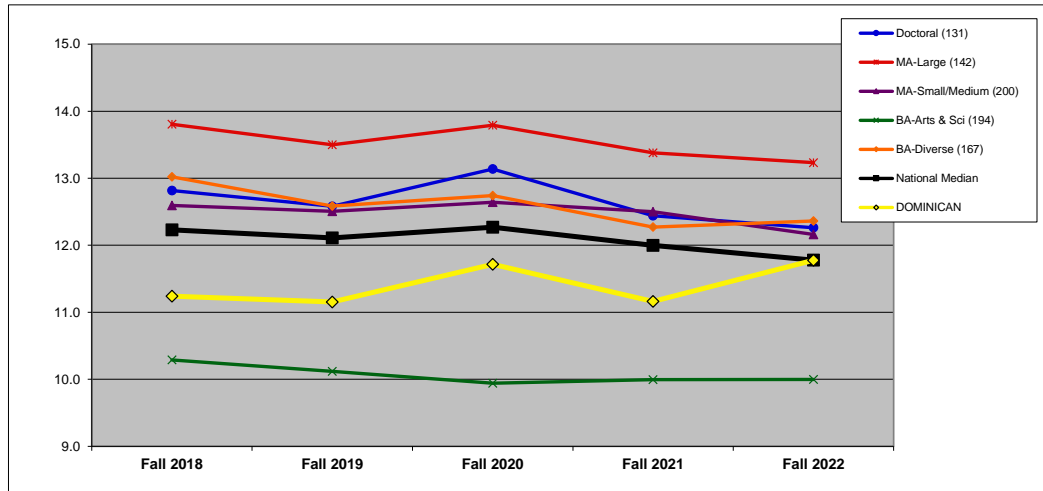
	Fall 2018	Fall 2019	Fall 2020	Fall 2021	Fall 2022	Y1 to Y5 Change
>3,000 (36)	13.9	13.6	13.9	13.6	13.7	-1.8%
2,001-3,000 (41)	12.1	11.9	12.0	12.0	12.1	0.0%
1,000-2,000 (81)	11.9	11.8	11.8	11.9	12.1	1.9%
<1,000 (55)	10.5	10.5	10.5	10.2	9.6	-9.0%
National Median	12.2	12.1	12.3	12.0	11.8	-3.7%
DOMINICAN	11.2	11.2	11.7	11.2	11.8	4.8%

STUDENT/FACULTY RATIO: BY CARNEGIE CLASSIFICATION (6C)

DEFINITION: Total fall full-time equivalent (FTE) enrollment, including undergraduate, graduate, and first-professional students, divided by instructional faculty FTE. See Introduction for information on the Carnegie classifications. (All national and regional data are presented as medians.)

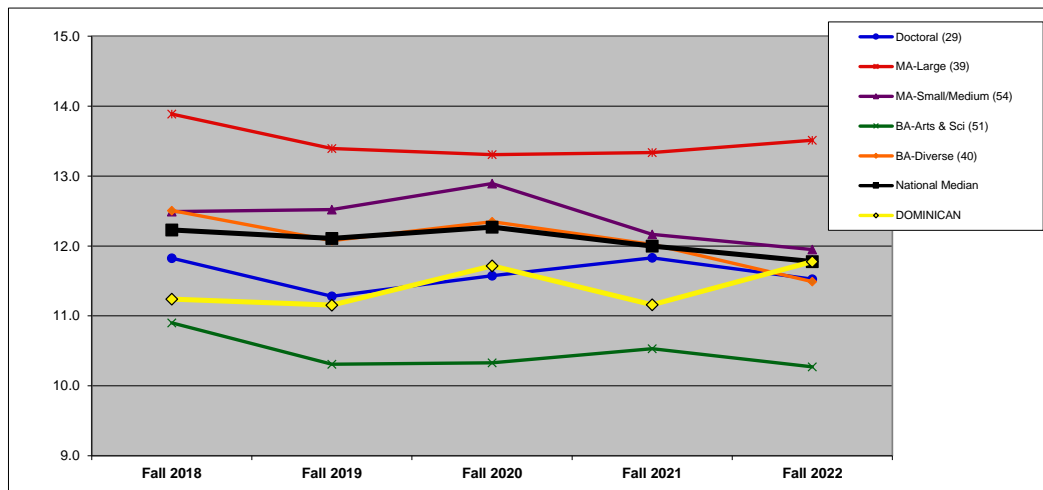
	Fall 2018	Fall 2019	Fall 2020	Fall 2021	Fall 2022	Y1 to Y5 Change
DOMINICAN	11.2	11.2	11.7	11.2	11.8	4.8%
CARNEGIE	MA-Larger					

NATIONAL: CARNEGIE (n=834).



	Fall 2018	Fall 2019	Fall 2020	Fall 2021	Fall 2022	Y1 to Y5 Change
Doctoral (131)	12.8	12.6	13.1	12.4	12.3	-4.3%
MA-Large (142)	13.8	13.5	13.8	13.4	13.2	-4.1%
MA-Small/Medium (200)	12.6	12.5	12.6	12.5	12.2	-3.4%
BA-Arts & Sci (194)	10.3	10.1	9.9	10.0	10.0	-2.8%
BA-Diverse (167)	13.0	12.6	12.7	12.3	12.4	-5.1%
National Median	12.2	12.1	12.3	12.0	11.8	-3.7%
DOMINICAN	11.2	11.2	11.7	11.2	11.8	4.8%

MIDWEST REGION: CARNEGIE (n=213).



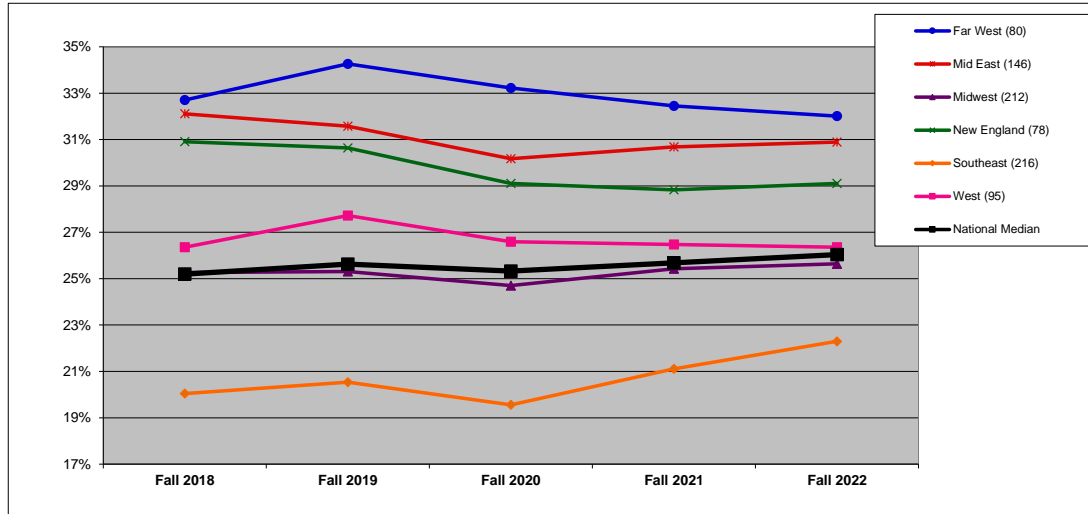
	Fall 2018	Fall 2019	Fall 2020	Fall 2021	Fall 2022	Y1 to Y5 Change
Doctoral (29)	11.8	11.3	11.6	11.8	11.5	-2.5%
MA-Large (39)	13.9	13.4	13.3	13.3	13.5	-2.7%
MA-Small/Medium (54)	12.5	12.5	12.9	12.2	11.9	-4.3%
BA-Arts & Sci (51)	10.9	10.3	10.3	10.5	10.3	-5.8%
BA-Diverse (40)	12.5	12.1	12.3	12.0	11.5	-8.1%
National Median	12.2	12.1	12.3	12.0	11.8	-3.7%
DOMINICAN	11.2	11.2	11.7	11.2	11.8	4.8%

PART-TIME FACULTY (%): BY REGION (7R)

DEFINITION: Full-time equivalent (FTE) for part-time instructional faculty as a percentage of total instructional faculty FTE.

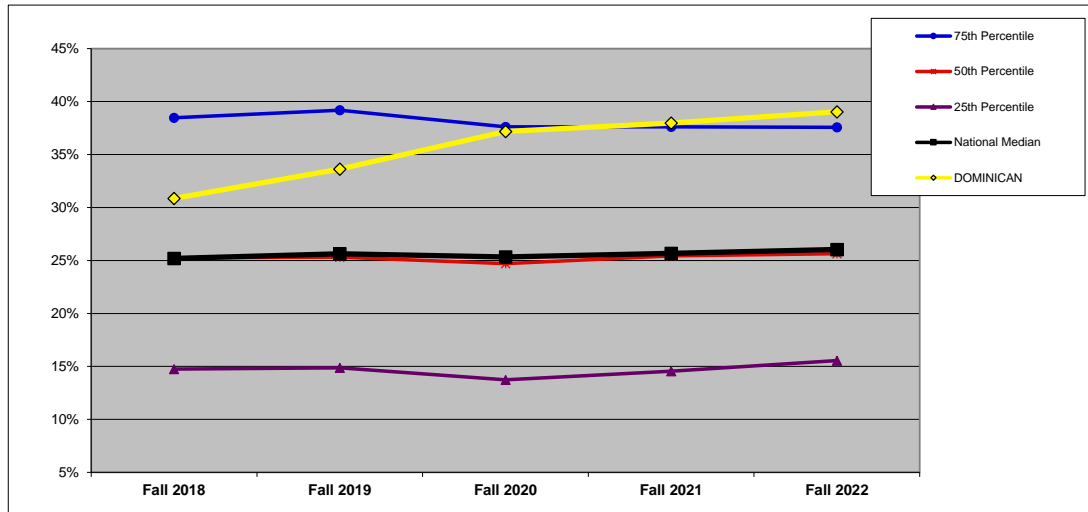
	Fall 2018	Fall 2019	Fall 2020	Fall 2021	Fall 2022
DOMINICAN	30.9%	33.6%	37.2%	38.0%	39.0%

NATIONAL (n=827). All data on this chart are presented as medians. See Introduction for description of regions.



	Fall 2018	Fall 2019	Fall 2020	Fall 2021	Fall 2022
Far West (80)	32.7%	34.3%	33.2%	32.5%	32.0%
Mid East (146)	32.1%	31.6%	30.2%	30.7%	30.9%
Midwest (212)	25.3%	25.3%	24.7%	25.4%	25.6%
New England (78)	30.9%	30.6%	29.1%	28.8%	29.1%
Southeast (216)	20.0%	20.5%	19.6%	21.1%	22.3%
West (95)	26.4%	27.7%	26.6%	26.5%	26.4%
National Median	25.2%	25.6%	25.3%	25.7%	26.0%

MIDWEST REGION (n=212). In addition to the median, which is the 50th percentile, this chart shows the 75th and 25th percentiles for the region.



	Fall 2018	Fall 2019	Fall 2020	Fall 2021	Fall 2022
75th Percentile	38.5%	39.2%	37.6%	37.6%	37.6%
50th Percentile	25.3%	25.3%	24.7%	25.4%	25.6%
25th Percentile	14.8%	14.9%	13.7%	14.5%	15.6%
National Median	25.2%	25.6%	25.3%	25.7%	26.0%
DOMINICAN	30.9%	33.6%	37.2%	38.0%	39.0%

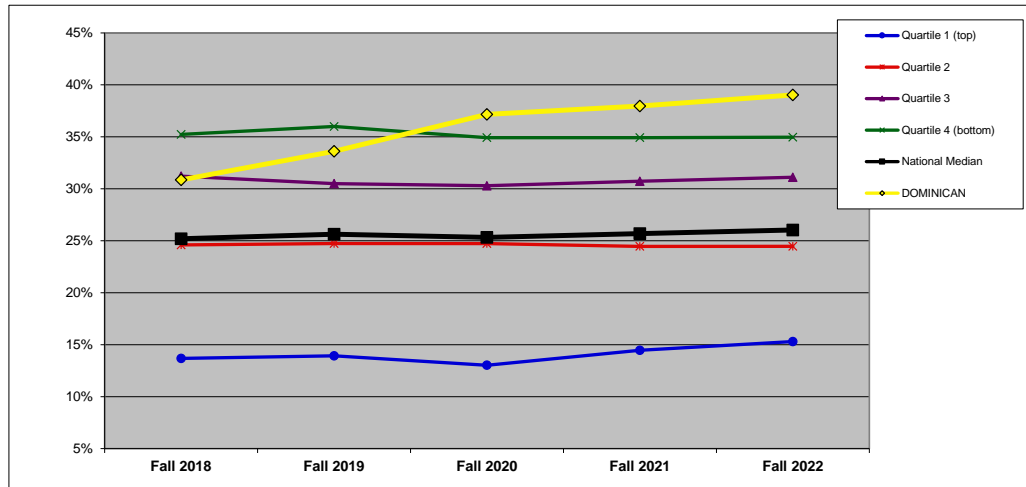
PART-TIME FACULTY (%): BY FINANCIAL RESOURCES (7F)

DEFINITION: Full-time equivalent (FTE) for part-time instructional faculty as a percentage of total instructional faculty FTE. (All national and regional data are presented as medians.)

	Fall 2018	Fall 2019	Fall 2020	Fall 2021	Fall 2022
DOMINICAN	30.9%	33.6%	37.2%	38.0%	39.0%

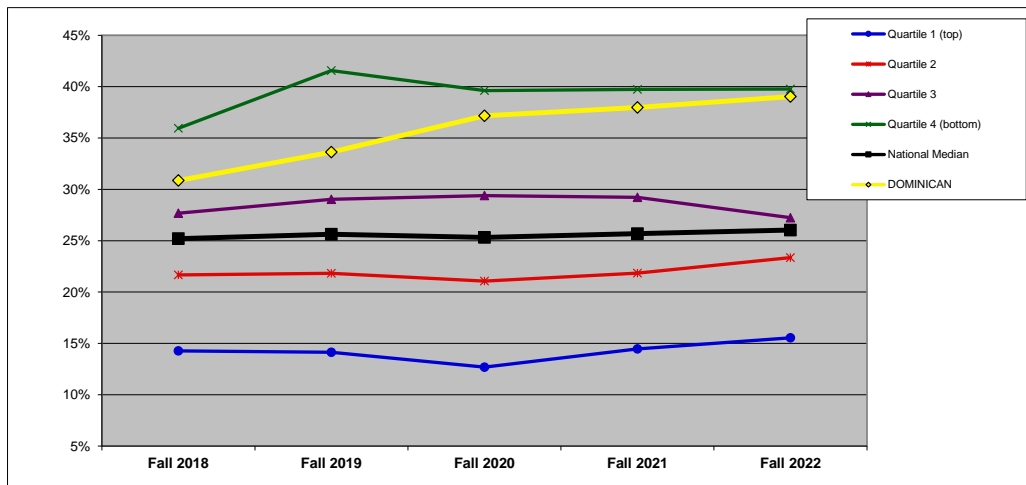
QUARTILES	
NATIONAL	2
REGIONAL	2

NATIONAL: FINANCIAL RESOURCES (n=827).



	Fall 2018	Fall 2019	Fall 2020	Fall 2021	Fall 2022
Quartile 1 (top)	13.7%	13.9%	13.0%	14.5%	15.3%
Quartile 2	24.6%	24.7%	24.7%	24.5%	24.5%
Quartile 3	31.2%	30.5%	30.3%	30.7%	31.1%
Quartile 4 (bottom)	35.2%	36.0%	34.9%	34.9%	35.0%
National Median	25.2%	25.6%	25.3%	25.7%	26.0%
DOMINICAN	30.9%	33.6%	37.2%	38.0%	39.0%

MIDWEST REGION: FINANCIAL RESOURCES (n=212).



	Fall 2018	Fall 2019	Fall 2020	Fall 2021	Fall 2022
Quartile 1 (top)	14.3%	14.1%	12.7%	14.5%	15.5%
Quartile 2	21.7%	21.8%	21.1%	21.8%	23.4%
Quartile 3	27.7%	29.0%	29.4%	29.2%	27.2%
Quartile 4 (bottom)	35.9%	41.6%	39.6%	39.7%	39.8%
National Median	25.2%	25.6%	25.3%	25.7%	26.0%
DOMINICAN	30.9%	33.6%	37.2%	38.0%	39.0%

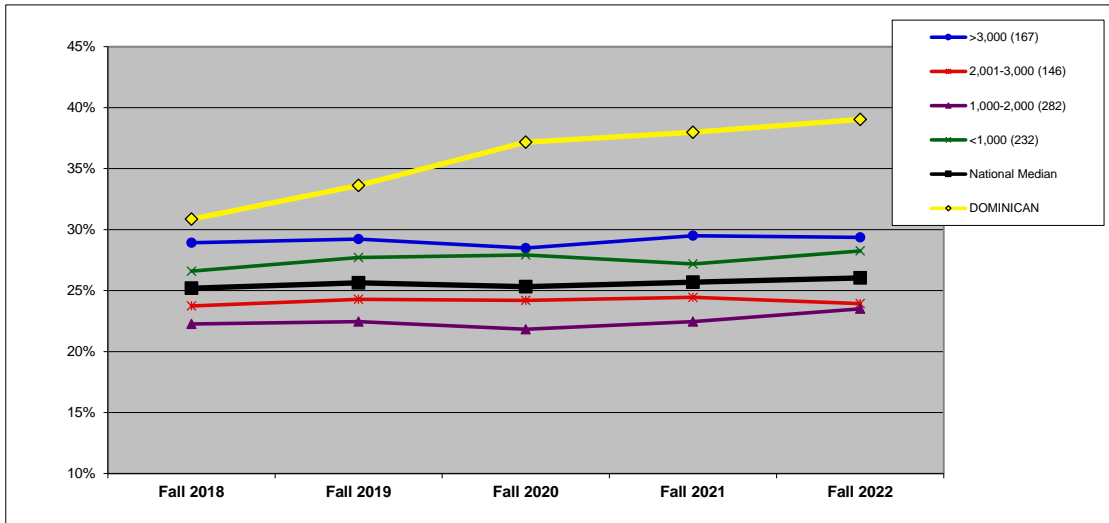
PART-TIME FACULTY (%): BY ENROLLMENT SIZE (7S)

DEFINITION: Full-time equivalent (FTE) for part-time instructional faculty as a percentage of total instructional faculty FTE. (All national and regional data are presented as medians.)

	Fall 2018	Fall 2019	Fall 2020	Fall 2021	Fall 2022
DOMINICAN	30.9%	33.6%	37.2%	38.0%	39.0%

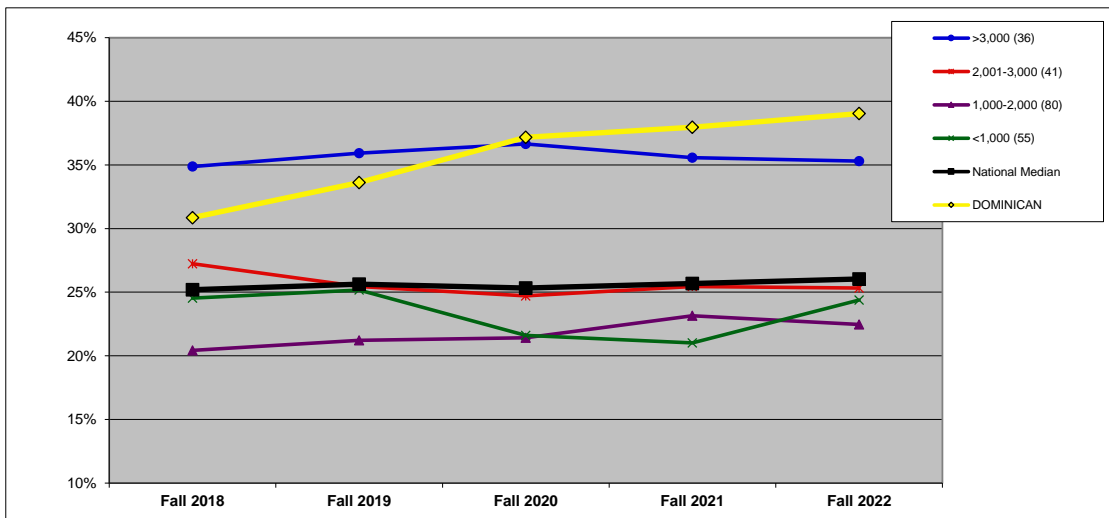
SIZE 2,001-3,000

NATIONAL: SIZE (n=827).



	Fall 2018	Fall 2019	Fall 2020	Fall 2021	Fall 2022
>3,000 (167)	28.9%	29.2%	28.5%	29.5%	29.4%
2,001-3,000 (146)	23.7%	24.3%	24.2%	24.5%	23.9%
1,000-2,000 (282)	22.3%	22.4%	21.8%	22.5%	23.5%
<1,000 (232)	26.6%	27.7%	27.9%	27.2%	28.3%
National Median	25.2%	25.6%	25.3%	25.7%	26.0%
DOMINICAN	30.9%	33.6%	37.2%	38.0%	39.0%

MIDWEST REGION: SIZE (n=212).



	Fall 2018	Fall 2019	Fall 2020	Fall 2021	Fall 2022
>3,000 (36)	34.9%	35.9%	36.7%	35.6%	35.3%
2,001-3,000 (41)	27.2%	25.5%	24.7%	25.4%	25.3%
1,000-2,000 (80)	20.4%	21.2%	21.4%	23.1%	22.5%
<1,000 (55)	24.5%	25.2%	21.6%	21.0%	24.4%
National Median	25.2%	25.6%	25.3%	25.7%	26.0%
DOMINICAN	30.9%	33.6%	37.2%	38.0%	39.0%

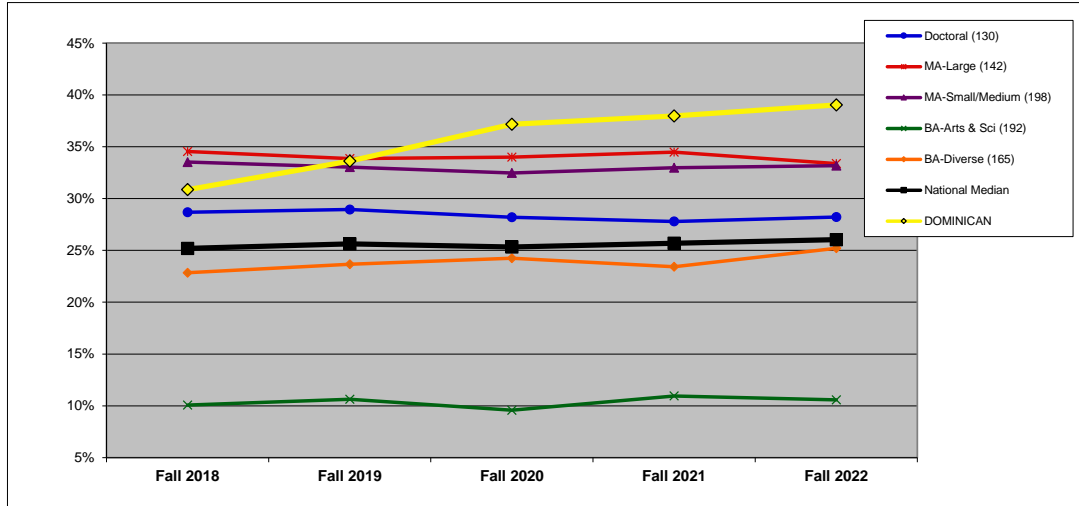
PART-TIME FACULTY (%): BY CARNEGIE CLASSIFICATION (7C)

DEFINITION: Full-time equivalent (FTE) for part-time instructional faculty as a percentage of total instructional faculty FTE. See Introduction for information on the Carnegie classifications. (All national and regional data are presented as medians.)

	Fall 2018	Fall 2019	Fall 2020	Fall 2021	Fall 2022
DOMINICAN	30.9%	33.6%	37.2%	38.0%	39.0%

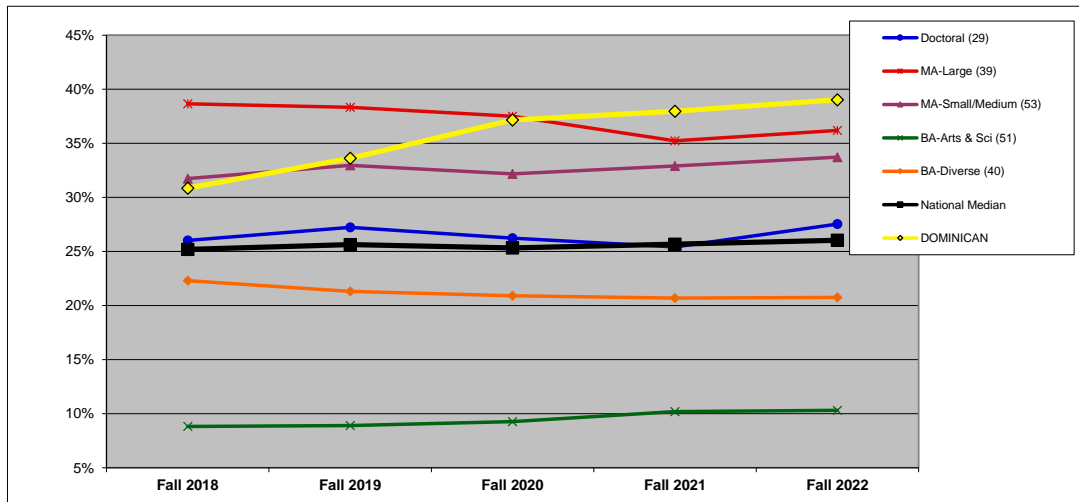
CARNEGIE MA-Larger

NATIONAL: CARNEGIE (n=827).



	Fall 2018	Fall 2019	Fall 2020	Fall 2021	Fall 2022
Doctoral (130)	28.7%	28.9%	28.2%	27.8%	28.2%
MA-Large (142)	34.5%	33.9%	34.0%	34.5%	33.4%
MA-Small/Medium (198)	33.5%	33.0%	32.5%	33.0%	33.2%
BA-Arts & Sci (192)	10.1%	10.6%	9.6%	11.0%	10.6%
BA-Diverse (165)	22.8%	23.7%	24.2%	23.4%	25.2%
National Median	25.2%	25.6%	25.3%	25.7%	26.0%
DOMINICAN	30.9%	33.6%	37.2%	38.0%	39.0%

MIDWEST REGION: CARNEGIE (n=212).



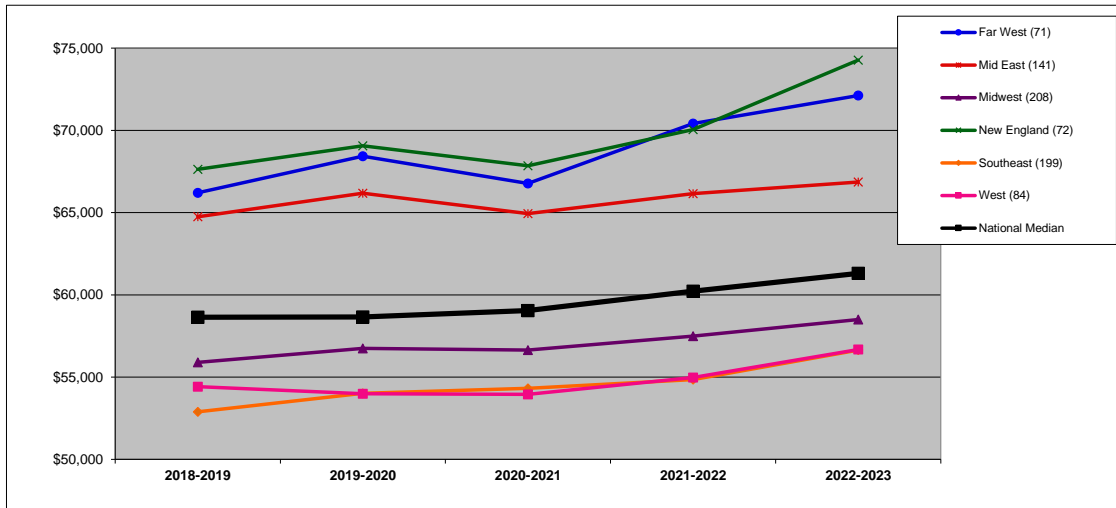
	Fall 2018	Fall 2019	Fall 2020	Fall 2021	Fall 2022
Doctoral (29)	26.0%	27.2%	26.2%	25.4%	27.5%
MA-Large (39)	38.7%	38.3%	37.5%	35.2%	36.2%
MA-Small/Medium (53)	31.7%	33.0%	32.2%	32.9%	33.7%
BA-Arts & Sci (51)	8.8%	8.9%	9.3%	10.2%	10.3%
BA-Diverse (40)	22.3%	21.3%	20.9%	20.7%	20.7%
National Median	25.2%	25.6%	25.3%	25.7%	26.0%
DOMINICAN	30.9%	33.6%	37.2%	38.0%	39.0%

ASSISTANT PROFESSOR AVERAGE SALARY (\$): BY REGION (8R)

DEFINITION: The average salary for assistant professors equated to a 9-month contract.

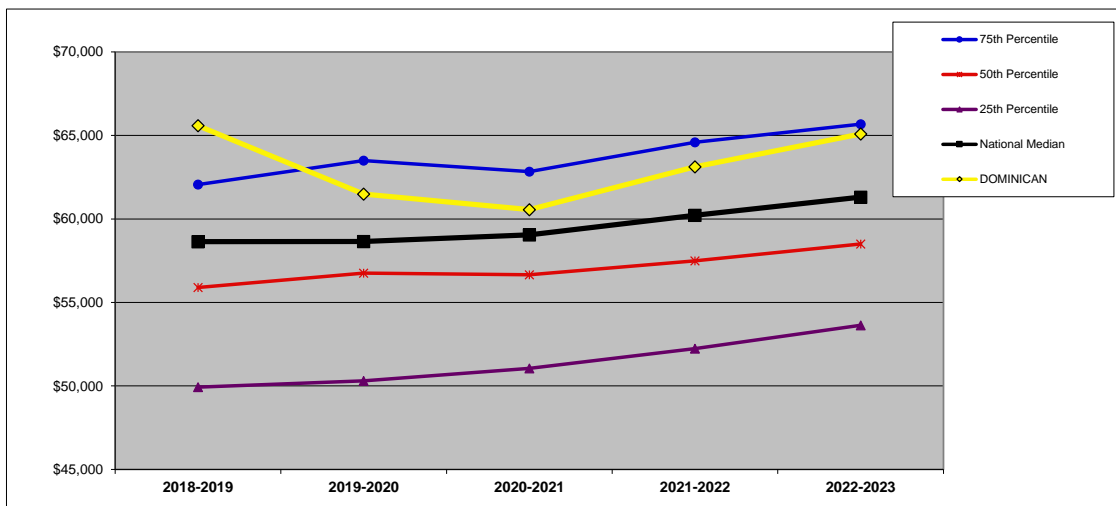
	2018-2019	2019-2020	2020-2021	2021-2022	2022-2023	Y1 to Y5 Change
DOMINICAN	\$ 65,581	\$ 61,489	\$ 60,559	\$ 63,118	\$ 65,085	-0.8%

NATIONAL (n=775). All data on this chart are presented as medians. See Introduction for description of regions.



	2018-2019	2019-2020	2020-2021	2021-2022	2022-2023	Y1 to Y5 Change
Far West (71)	\$ 66,207	\$ 68,434	\$ 66,777	\$ 70,410	\$ 72,117	8.9%
Mid East (141)	\$ 64,748	\$ 66,180	\$ 64,937	\$ 66,156	\$ 66,859	3.3%
Midwest (208)	\$ 55,896	\$ 56,753	\$ 56,651	\$ 57,497	\$ 58,501	4.7%
New England (72)	\$ 67,634	\$ 69,060	\$ 67,845	\$ 70,048	\$ 74,273	9.8%
Southeast (199)	\$ 52,890	\$ 54,021	\$ 54,318	\$ 54,856	\$ 56,643	7.1%
West (84)	\$ 54,418	\$ 53,996	\$ 53,953	\$ 54,977	\$ 56,678	4.2%
National Median	\$ 58,640	\$ 58,653	\$ 59,049	\$ 60,221	\$ 61,307	4.5%

MIDWEST REGION (n=208). In addition to the median, which is the 50th percentile, this chart shows the 75th and 25th percentiles for the region.



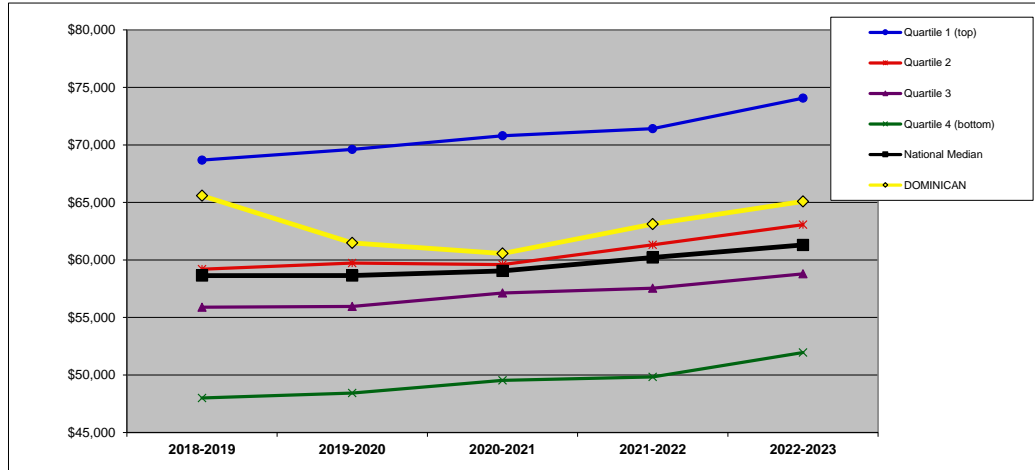
	2018-2019	2019-2020	2020-2021	2021-2022	2022-2023	Y1 to Y5 Change
75th Percentile	\$ 62,057	\$ 63,492	\$ 62,828	\$ 64,593	\$ 65,675	5.8%
50th Percentile	\$ 55,896	\$ 56,753	\$ 56,651	\$ 57,497	\$ 58,501	4.7%
25th Percentile	\$ 49,928	\$ 50,307	\$ 51,054	\$ 52,238	\$ 53,633	7.4%
National Median	\$ 58,640	\$ 58,653	\$ 59,049	\$ 60,221	\$ 61,307	4.5%
DOMINICAN	\$ 65,581	\$ 61,489	\$ 60,559	\$ 63,118	\$ 65,085	-0.8%

ASSISTANT PROFESSOR AVERAGE SALARY (\$): BY FINANCIAL RESOURCES (8F)

DEFINITION: The average salary for assistant professors equated to a 9-month contract. (All national and regional data are presented as medians.)

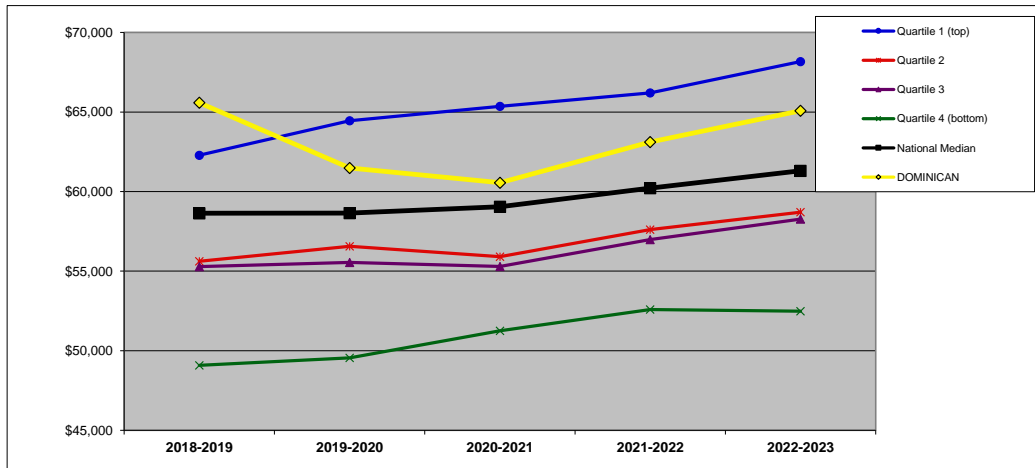
	2018-2019	2019-2020	2020-2021	2021-2022	2022-2023	Y1 to Y5 Change	QUARTILES	
DOMINICAN	\$ 65,581	\$ 61,489	\$ 60,559	\$ 63,118	\$ 65,085	-0.8%	NATIONAL	2
							REGIONAL	2

NATIONAL: FINANCIAL RESOURCES (n=775).



	2018-2019	2019-2020	2020-2021	2021-2022	2022-2023	Y1 to Y5 Change
Quartile 1 (top)	\$ 68,682	\$ 69,611	\$ 70,788	\$ 71,415	\$ 74,062	7.8%
Quartile 2	\$ 59,196	\$ 59,738	\$ 59,599	\$ 61,317	\$ 63,065	6.5%
Quartile 3	\$ 55,894	\$ 55,961	\$ 57,129	\$ 57,550	\$ 58,794	5.2%
Quartile 4 (bottom)	\$ 48,004	\$ 48,434	\$ 49,526	\$ 49,829	\$ 51,954	8.2%
National Median	\$ 58,640	\$ 58,653	\$ 59,049	\$ 60,221	\$ 61,307	4.5%
DOMINICAN	\$ 65,581	\$ 61,489	\$ 60,559	\$ 63,118	\$ 65,085	-0.8%

MIDWEST REGION: FINANCIAL RESOURCES (n=208).



	2018-2019	2019-2020	2020-2021	2021-2022	2022-2023	Y1 to Y5 Change
Quartile 1 (top)	\$ 62,286	\$ 64,447	\$ 65,353	\$ 66,200	\$ 68,170	9.4%
Quartile 2	\$ 55,621	\$ 56,566	\$ 55,911	\$ 57,615	\$ 58,704	5.5%
Quartile 3	\$ 55,286	\$ 55,553	\$ 55,290	\$ 56,986	\$ 58,270	5.4%
Quartile 4 (bottom)	\$ 49,084	\$ 49,553	\$ 51,250	\$ 52,589	\$ 52,485	6.9%
National Median	\$ 58,640	\$ 58,653	\$ 59,049	\$ 60,221	\$ 61,307	4.5%
DOMINICAN	\$ 65,581	\$ 61,489	\$ 60,559	\$ 63,118	\$ 65,085	-0.8%

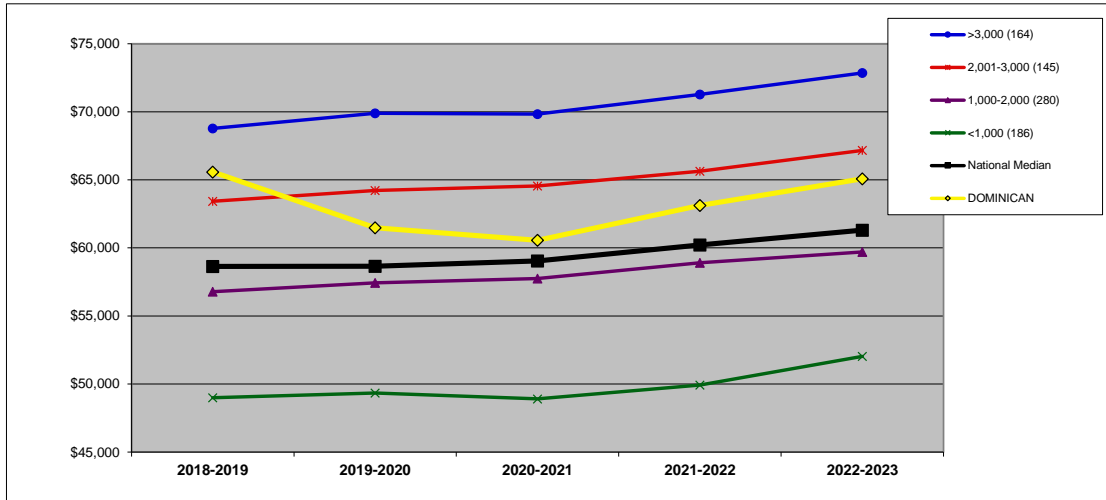
ASSISTANT PROFESSOR AVERAGE SALARY (\$): BY ENROLLMENT SIZE (8S)

DEFINITION: The average salary for assistant professors equated to a 9-month contract. (All national and regional data are presented as medians.)

	2018-2019	2019-2020	2020-2021	2021-2022	2022-2023	Y1 to Y5 Change
DOMINICAN	\$ 65,581	\$ 61,489	\$ 60,559	\$ 63,118	\$ 65,085	-0.8%

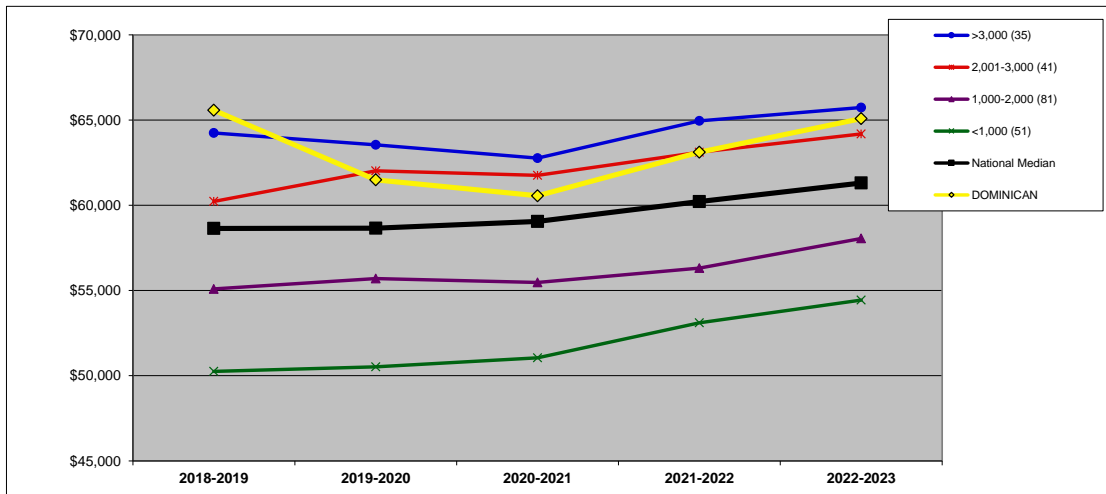
SIZE 2,001-3,000

NATIONAL: SIZE (n=775).



	2018-2019	2019-2020	2020-2021	2021-2022	2022-2023	Y1 to Y5 Change
>3,000 (164)	\$ 68,780	\$ 69,900	\$ 69,833	\$ 71,274	\$ 72,854	5.9%
2,001-3,000 (145)	\$ 63,426	\$ 64,222	\$ 64,550	\$ 65,631	\$ 67,163	5.9%
1,000-2,000 (280)	\$ 56,784	\$ 57,441	\$ 57,757	\$ 58,902	\$ 59,703	5.1%
<1,000 (186)	\$ 48,997	\$ 49,340	\$ 48,911	\$ 49,928	\$ 52,032	6.2%
National Median	\$ 58,640	\$ 58,653	\$ 59,049	\$ 60,221	\$ 61,307	4.5%
DOMINICAN	\$ 65,581	\$ 61,489	\$ 60,559	\$ 63,118	\$ 65,085	-0.8%

MIDWEST REGION: SIZE (n=208).



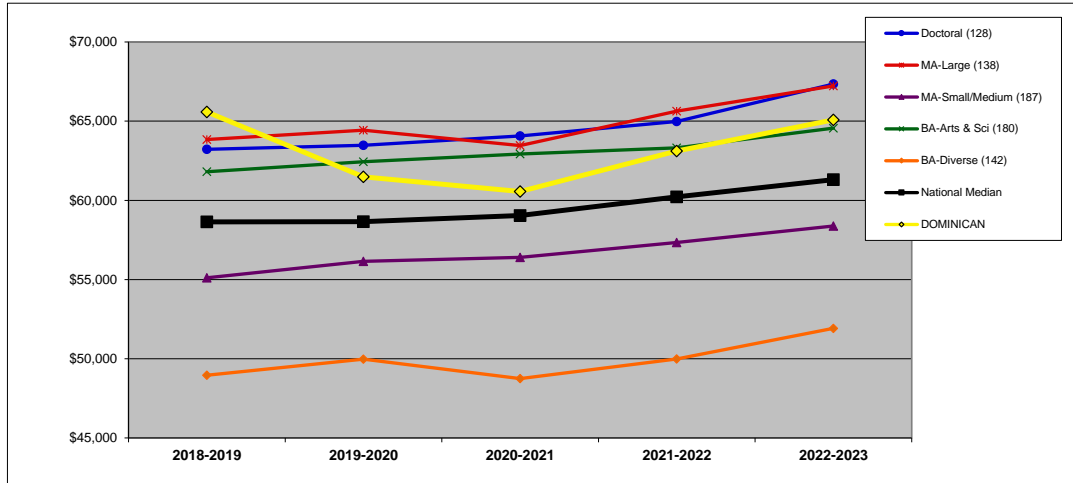
	2018-2019	2019-2020	2020-2021	2021-2022	2022-2023	Y1 to Y5 Change
>3,000 (35)	\$ 64,246	\$ 63,549	\$ 62,768	\$ 64,955	\$ 65,738	2.3%
2,001-3,000 (41)	\$ 60,225	\$ 62,019	\$ 61,759	\$ 63,118	\$ 64,188	6.6%
1,000-2,000 (81)	\$ 55,093	\$ 55,698	\$ 55,469	\$ 56,312	\$ 58,053	5.4%
<1,000 (51)	\$ 50,254	\$ 50,525	\$ 51,047	\$ 53,099	\$ 54,438	8.3%
National Median	\$ 58,640	\$ 58,653	\$ 59,049	\$ 60,221	\$ 61,307	4.5%
DOMINICAN	\$ 65,581	\$ 61,489	\$ 60,559	\$ 63,118	\$ 65,085	-0.8%

ASSISTANT PROFESSOR AVERAGE SALARY (\$): BY CARNEGIE CLASSIFICATION (8C)

DEFINITION: The average salary for assistant professors equated to a 9-month contract. See Introduction for information on the Carnegie classifications. (All national and regional data are presented as medians.)

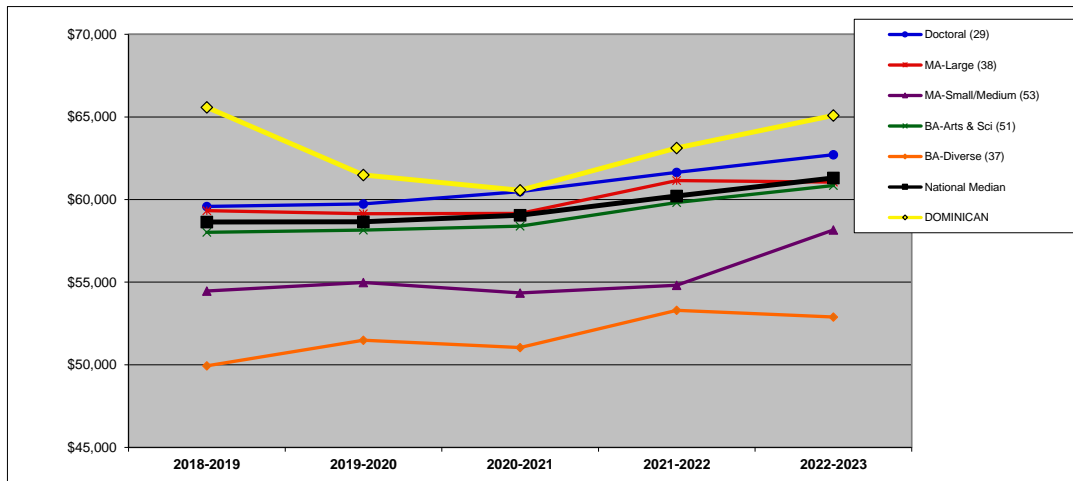
	2018-2019	2019-2020	2020-2021	2021-2022	2022-2023	Y1 to Y5 Change	CARNEGIE
DOMINICAN	\$ 65,581	\$ 61,489	\$ 60,559	\$ 63,118	\$ 65,085	-0.8%	MA-Larger

NATIONAL: CARNEGIE (n=775).



	2018-2019	2019-2020	2020-2021	2021-2022	2022-2023	Y1 to Y5 Change
Doctoral (128)	\$ 63,223	\$ 63,482	\$ 64,068	\$ 64,977	\$ 67,342	6.5%
MA-Large (138)	\$ 63,846	\$ 64,432	\$ 63,461	\$ 65,628	\$ 67,223	5.3%
MA-Small/Medium (187)	\$ 55,111	\$ 56,154	\$ 56,394	\$ 57,339	\$ 58,380	5.9%
BA-Arts & Sci (180)	\$ 61,806	\$ 62,434	\$ 62,923	\$ 63,311	\$ 64,559	4.5%
BA-Diverse (142)	\$ 48,965	\$ 49,976	\$ 48,746	\$ 49,983	\$ 51,920	6.0%
National Median	\$ 58,640	\$ 58,653	\$ 59,049	\$ 60,221	\$ 61,307	4.5%
DOMINICAN	\$ 65,581	\$ 61,489	\$ 60,559	\$ 63,118	\$ 65,085	-0.8%

MIDWEST REGION: CARNEGIE (n=208).



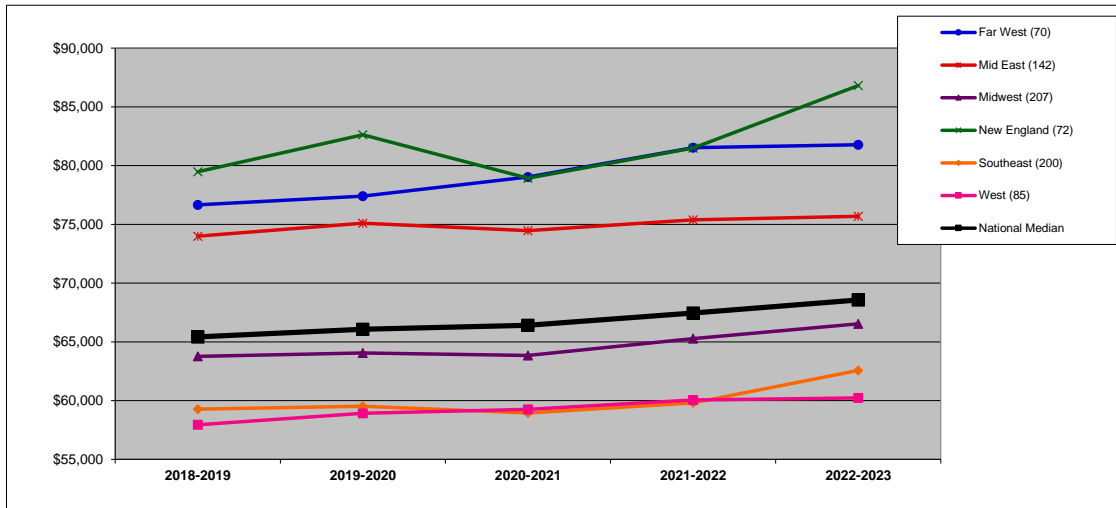
	2018-2019	2019-2020	2020-2021	2021-2022	2022-2023	Y1 to Y5 Change
Doctoral (29)	\$ 59,583	\$ 59,738	\$ 60,475	\$ 61,648	\$ 62,713	5.3%
MA-Large (38)	\$ 59,332	\$ 59,142	\$ 59,159	\$ 61,148	\$ 61,056	2.9%
MA-Small/Medium (53)	\$ 54,468	\$ 54,984	\$ 54,348	\$ 54,809	\$ 58,160	6.8%
BA-Arts & Sci (51)	\$ 58,018	\$ 58,157	\$ 58,397	\$ 59,817	\$ 60,848	4.9%
BA-Diverse (37)	\$ 49,939	\$ 51,484	\$ 51,047	\$ 53,297	\$ 52,894	5.9%
National Median	\$ 58,640	\$ 58,653	\$ 59,049	\$ 60,221	\$ 61,307	4.5%
DOMINICAN	\$ 65,581	\$ 61,489	\$ 60,559	\$ 63,118	\$ 65,085	-0.8%

ASSOCIATE PROFESSOR AVERAGE SALARY (\$): BY REGION (9R)

DEFINITION: The average salary for associate professors equated to a 9-month contract.

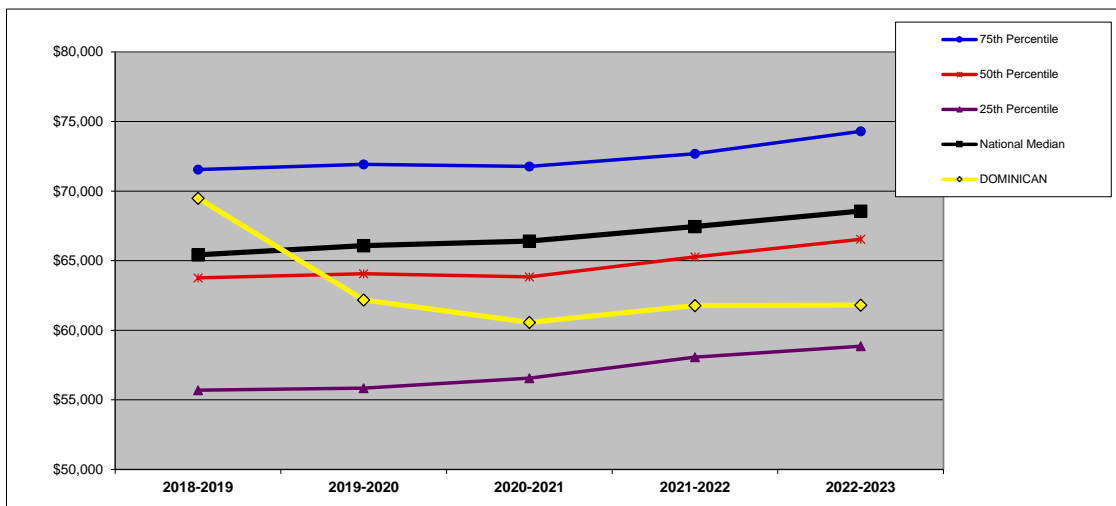
	2018-2019	2019-2020	2020-2021	2021-2022	2022-2023	Y1 to Y5 Change
DOMINICAN	\$ 69,494	\$ 62,179	\$ 60,568	\$ 61,782	\$ 61,809	-11.1%

NATIONAL (n=776). All data on this chart are presented as medians. See Introduction for description of regions.



	2018-2019	2019-2020	2020-2021	2021-2022	2022-2023	Y1 to Y5 Change
Far West (70)	\$ 76,661	\$ 77,406	\$ 79,037	\$ 81,522	\$ 81,776	6.7%
Mid East (142)	\$ 73,996	\$ 75,098	\$ 74,467	\$ 75,382	\$ 75,687	2.3%
Midwest (207)	\$ 63,765	\$ 64,055	\$ 63,840	\$ 65,279	\$ 66,536	4.3%
New England (72)	\$ 79,484	\$ 82,619	\$ 78,932	\$ 81,497	\$ 86,815	9.2%
Southeast (200)	\$ 59,278	\$ 59,521	\$ 58,951	\$ 59,802	\$ 62,570	5.6%
West (85)	\$ 57,942	\$ 58,919	\$ 59,258	\$ 60,057	\$ 60,229	3.9%
National Median	\$ 65,421	\$ 66,073	\$ 66,413	\$ 67,453	\$ 68,568	4.8%

MIDWEST REGION (n=207). In addition to the median, which is the 50th percentile, this chart shows the 75th and 25th percentiles for the region.



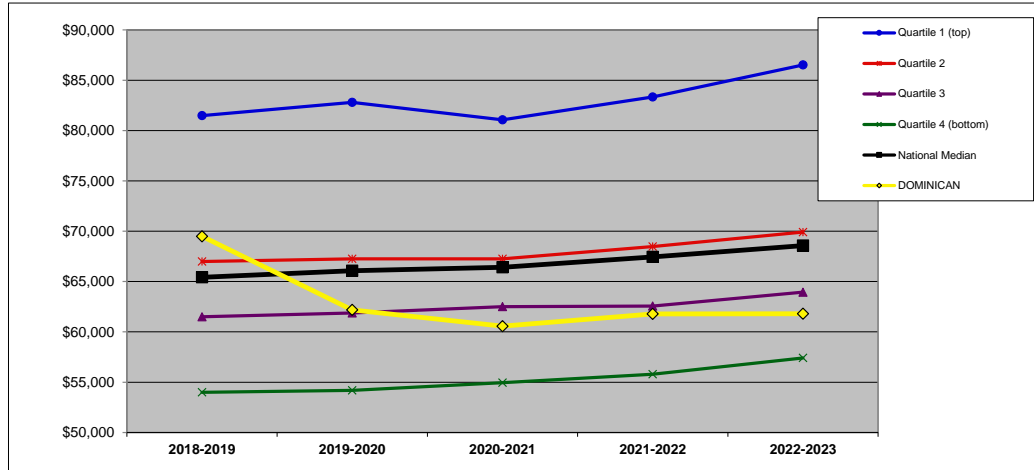
	2018-2019	2019-2020	2020-2021	2021-2022	2022-2023	Y1 to Y5 Change
75th Percentile	\$ 71,548	\$ 71,917	\$ 71,775	\$ 72,681	\$ 74,295	3.8%
50th Percentile	\$ 63,765	\$ 64,055	\$ 63,840	\$ 65,279	\$ 66,536	4.3%
25th Percentile	\$ 55,696	\$ 55,840	\$ 56,565	\$ 58,069	\$ 58,855	5.7%
National Median	\$ 65,421	\$ 66,073	\$ 66,413	\$ 67,453	\$ 68,568	4.8%
DOMINICAN	\$ 69,494	\$ 62,179	\$ 60,568	\$ 61,782	\$ 61,809	-11.1%

ASSOCIATE PROFESSOR AVERAGE SALARY (\$): BY FINANCIAL RESOURCES (9F)

DEFINITION: The average salary for associate professors equated to a 9-month contract. (All national and regional data are presented as medians.)

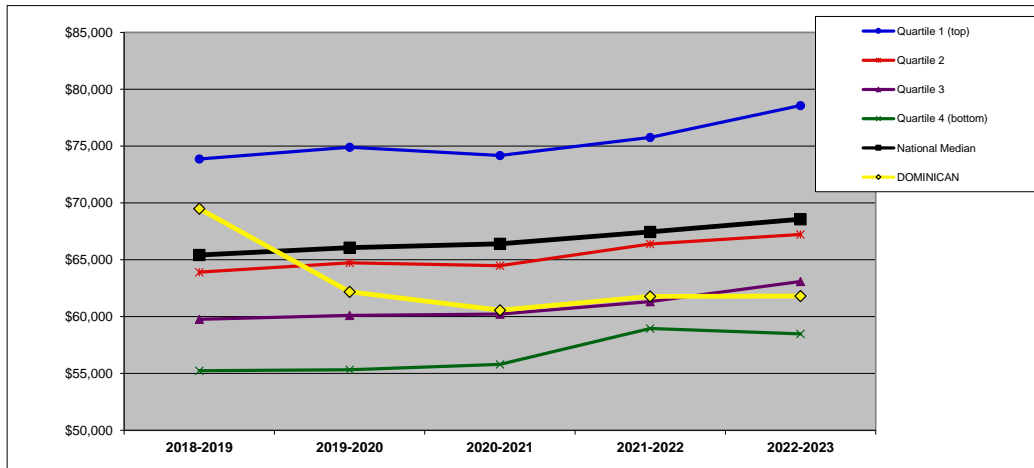
	2018-2019	2019-2020	2020-2021	2021-2022	2022-2023	Y1 to Y5 Change	QUARTILES	
DOMINICAN	\$ 69,494	\$ 62,179	\$ 60,568	\$ 61,782	\$ 61,809	-11.1%	NATIONAL	2
							REGIONAL	2

NATIONAL: FINANCIAL RESOURCES (n=776).



	2018-2019	2019-2020	2020-2021	2021-2022	2022-2023	Y1 to Y5 Change
Quartile 1 (top)	\$ 81,484	\$ 82,803	\$ 81,064	\$ 83,339	\$ 86,514	6.2%
Quartile 2	\$ 66,989	\$ 67,262	\$ 67,263	\$ 68,479	\$ 69,915	4.4%
Quartile 3	\$ 61,501	\$ 61,872	\$ 62,506	\$ 62,556	\$ 63,945	4.0%
Quartile 4 (bottom)	\$ 53,995	\$ 54,183	\$ 54,955	\$ 55,784	\$ 57,408	6.3%
National Median	\$ 65,421	\$ 66,073	\$ 66,413	\$ 67,453	\$ 68,568	4.8%
DOMINICAN	\$ 69,494	\$ 62,179	\$ 60,568	\$ 61,782	\$ 61,809	-11.1%

MIDWEST REGION: FINANCIAL RESOURCES (n=207).



	2018-2019	2019-2020	2020-2021	2021-2022	2022-2023	Y1 to Y5 Change
Quartile 1 (top)	\$ 73,866	\$ 74,907	\$ 74,172	\$ 75,767	\$ 78,572	6.4%
Quartile 2	\$ 63,914	\$ 64,734	\$ 64,489	\$ 66,391	\$ 67,231	5.2%
Quartile 3	\$ 59,765	\$ 60,114	\$ 60,217	\$ 61,330	\$ 63,091	5.6%
Quartile 4 (bottom)	\$ 55,243	\$ 55,329	\$ 55,804	\$ 58,959	\$ 58,480	5.9%
National Median	\$ 65,421	\$ 66,073	\$ 66,413	\$ 67,453	\$ 68,568	4.8%
DOMINICAN	\$ 69,494	\$ 62,179	\$ 60,568	\$ 61,782	\$ 61,809	-11.1%

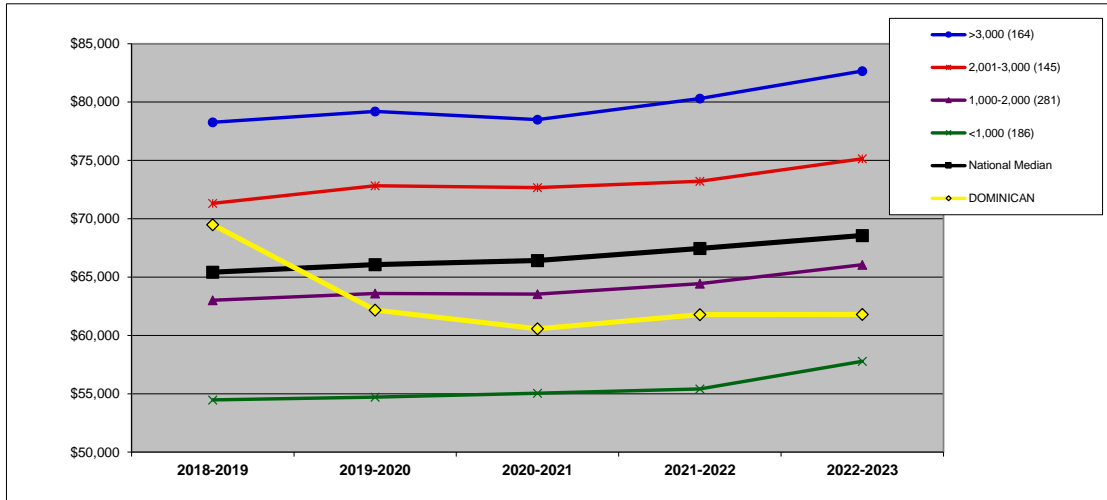
ASSOCIATE PROFESSOR AVERAGE SALARY (\$): BY ENROLLMENT SIZE (9S)

DEFINITION: The average salary for associate professors equated to a 9-month contract. (All national and regional data are presented as medians.)

	2018-2019	2019-2020	2020-2021	2021-2022	2022-2023	Y1 to Y5 Change
DOMINICAN	\$ 69,494	\$ 62,179	\$ 60,568	\$ 61,782	\$ 61,809	-11.1%

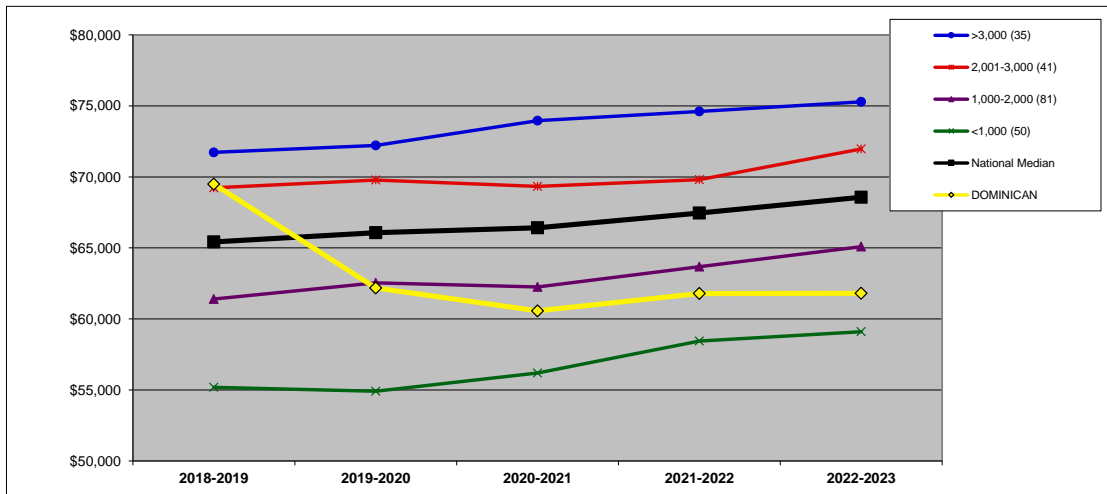
SIZE 2,001-3,000

NATIONAL: SIZE (n=776).



	2018-2019	2019-2020	2020-2021	2021-2022	2022-2023	Y1 to Y5 Change
>3,000 (164)	\$ 78,268	\$ 79,203	\$ 78,497	\$ 80,310	\$ 82,663	5.6%
2,001-3,000 (145)	\$ 71,319	\$ 72,820	\$ 72,671	\$ 73,208	\$ 75,141	5.4%
1,000-2,000 (281)	\$ 63,016	\$ 63,591	\$ 63,538	\$ 64,436	\$ 66,060	4.8%
<1,000 (186)	\$ 54,474	\$ 54,719	\$ 55,039	\$ 55,412	\$ 57,783	6.1%
National Median	\$ 65,421	\$ 66,073	\$ 66,413	\$ 67,453	\$ 68,568	4.8%
DOMINICAN	\$ 69,494	\$ 62,179	\$ 60,568	\$ 61,782	\$ 61,809	-11.1%

MIDWEST REGION: SIZE (n=207).



	2018-2019	2019-2020	2020-2021	2021-2022	2022-2023	Y1 to Y5 Change
>3,000 (35)	\$ 71,727	\$ 72,215	\$ 73,952	\$ 74,611	\$ 75,285	5.0%
2,001-3,000 (41)	\$ 69,230	\$ 69,779	\$ 69,328	\$ 69,812	\$ 71,967	4.0%
1,000-2,000 (81)	\$ 61,400	\$ 62,532	\$ 62,250	\$ 63,681	\$ 65,086	6.0%
<1,000 (50)	\$ 55,190	\$ 54,908	\$ 56,190	\$ 58,441	\$ 59,099	7.1%
National Median	\$ 65,421	\$ 66,073	\$ 66,413	\$ 67,453	\$ 68,568	4.8%
DOMINICAN	\$ 69,494	\$ 62,179	\$ 60,568	\$ 61,782	\$ 61,809	-11.1%

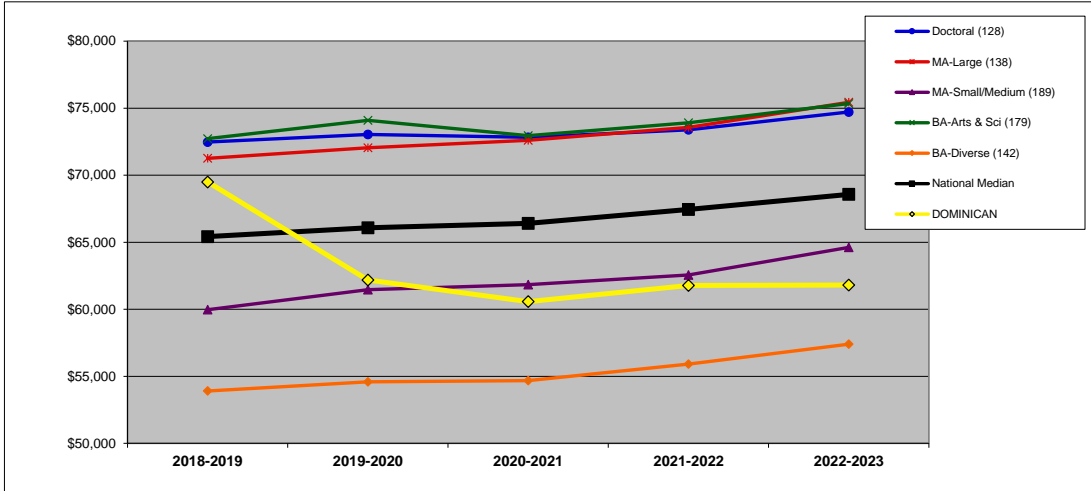
ASSOCIATE PROFESSOR AVERAGE SALARY (\$): BY CARNEGIE CLASSIFICATION (9C)

DEFINITION: The average salary for associate professors equated to a 9-month contract. See Introduction for information on the Carnegie classifications. (All national and regional data are presented as medians.)

	2018-2019	2019-2020	2020-2021	2021-2022	2022-2023	Change
DOMINICAN	\$ 69,494	\$ 62,179	\$ 60,568	\$ 61,782	\$ 61,809	-11.1%

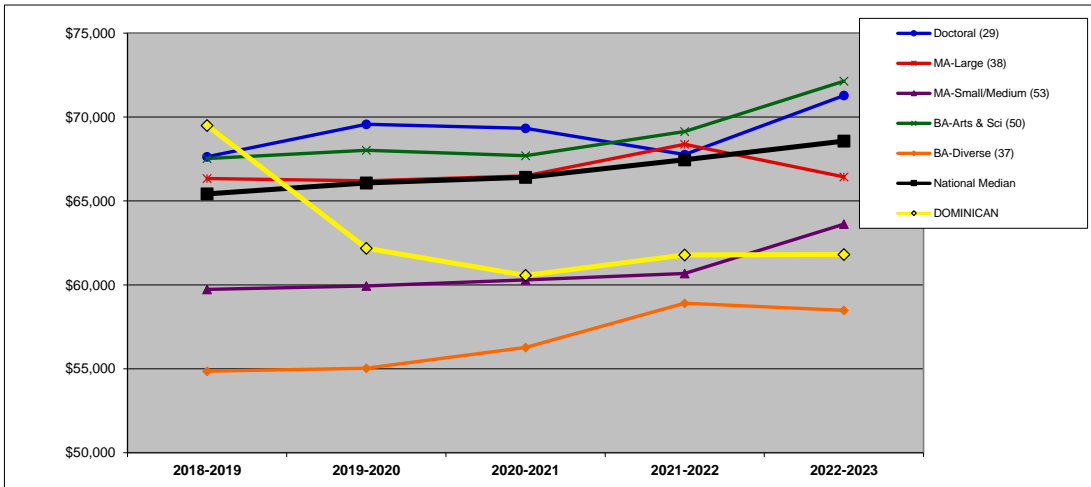
CARNEGIE MA-Larger

NATIONAL: CARNEGIE (n=776).



	2018-2019	2019-2020	2020-2021	2021-2022	2022-2023	Y1 to Y5 Change
Doctoral (128)	\$ 72,475	\$ 73,042	\$ 72,825	\$ 73,383	\$ 74,716	3.1%
MA-Large (138)	\$ 71,258	\$ 72,044	\$ 72,598	\$ 73,564	\$ 75,440	5.9%
MA-Small/Medium (189)	\$ 59,967	\$ 61,460	\$ 61,842	\$ 62,556	\$ 64,615	7.8%
BA-Arts & Sci (179)	\$ 72,727	\$ 74,086	\$ 72,947	\$ 73,912	\$ 75,346	3.6%
BA-Diverse (142)	\$ 53,904	\$ 54,593	\$ 54,680	\$ 55,909	\$ 57,393	6.5%
National Median	\$ 65,421	\$ 66,073	\$ 66,413	\$ 67,453	\$ 68,568	4.8%
DOMINICAN	\$ 69,494	\$ 62,179	\$ 60,568	\$ 61,782	\$ 61,809	-11.1%

MIDWEST REGION: CARNEGIE (n=207).



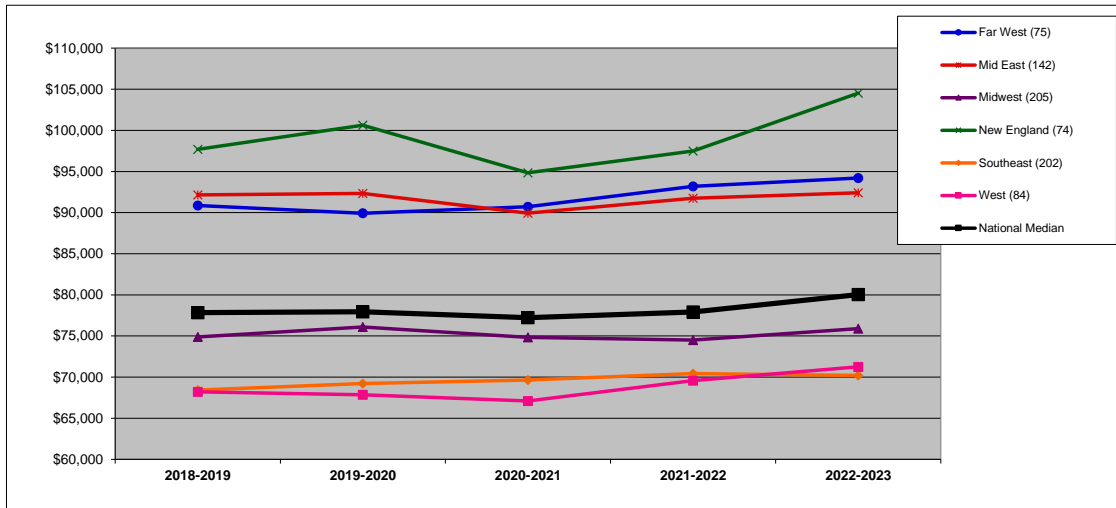
	2018-2019	2019-2020	2020-2021	2021-2022	2022-2023	Y1 to Y5 Change
Doctoral (29)	\$ 67,636	\$ 69,564	\$ 69,328	\$ 67,773	\$ 71,282	5.4%
MA-Large (38)	\$ 66,336	\$ 66,201	\$ 66,495	\$ 68,379	\$ 66,435	0.1%
MA-Small/Medium (53)	\$ 59,732	\$ 59,939	\$ 60,298	\$ 60,685	\$ 63,619	6.5%
BA-Arts & Sci (50)	\$ 67,528	\$ 68,027	\$ 67,697	\$ 69,140	\$ 72,140	6.8%
BA-Diverse (37)	\$ 54,858	\$ 55,035	\$ 56,274	\$ 58,909	\$ 58,480	6.6%
National Median	\$ 65,421	\$ 66,073	\$ 66,413	\$ 67,453	\$ 68,568	4.8%
DOMINICAN	\$ 69,494	\$ 62,179	\$ 60,568	\$ 61,782	\$ 61,809	-11.1%

FULL PROFESSOR AVERAGE SALARY (\$): BY REGION (10R)

DEFINITION: The average salary for full professors equated to a 9-month contract.

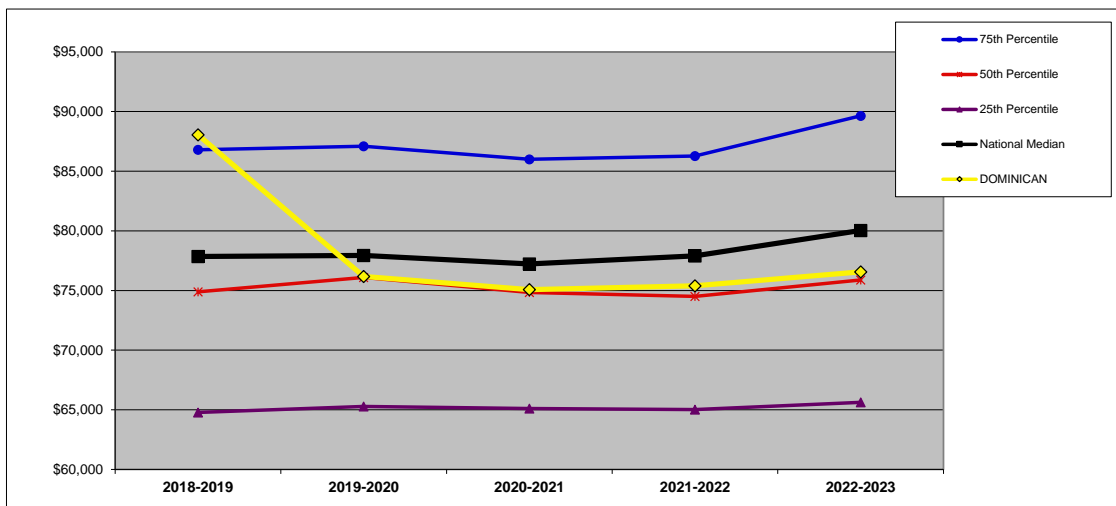
	2018-2019	2019-2020	2020-2021	2021-2022	2022-2023	Y1 to Y5 Change
DOMINICAN	\$ 88,050	\$ 76,177	\$ 75,072	\$ 75,399	\$ 76,560	-13.0%

NATIONAL (n=782). All data on this chart are presented as medians. See Introduction for description of regions.



	2018-2019	2019-2020	2020-2021	2021-2022	2022-2023	Y1 to Y5 Change
Far West (75)	\$ 90,865	\$ 89,920	\$ 90,719	\$ 93,189	\$ 94,208	3.7%
Mid East (142)	\$ 92,161	\$ 92,342	\$ 89,934	\$ 91,764	\$ 92,413	0.3%
Midwest (205)	\$ 74,897	\$ 76,095	\$ 74,831	\$ 74,506	\$ 75,888	1.3%
New England (74)	\$ 97,695	\$ 100,619	\$ 94,843	\$ 97,485	\$ 104,525	7.0%
Southeast (202)	\$ 68,423	\$ 69,218	\$ 69,642	\$ 70,430	\$ 70,197	2.6%
West (84)	\$ 68,204	\$ 67,861	\$ 67,101	\$ 69,586	\$ 71,254	4.5%
National Median	\$ 77,845	\$ 77,942	\$ 77,228	\$ 77,910	\$ 80,035	2.8%

MIDWEST REGION (n=205). In addition to the median, which is the 50th percentile, this chart shows the 75th and 25th percentiles for the region.



	2018-2019	2019-2020	2020-2021	2021-2022	2022-2023	Y1 to Y5 Change
75th Percentile	\$ 86,796	\$ 87,102	\$ 86,000	\$ 86,283	\$ 89,645	3.3%
50th Percentile	\$ 74,897	\$ 76,095	\$ 74,831	\$ 74,506	\$ 75,888	1.3%
25th Percentile	\$ 64,779	\$ 65,275	\$ 65,104	\$ 65,023	\$ 65,625	1.3%
National Median	\$ 77,845	\$ 77,942	\$ 77,228	\$ 77,910	\$ 80,035	2.8%
DOMINICAN	\$ 88,050	\$ 76,177	\$ 75,072	\$ 75,399	\$ 76,560	-13.0%

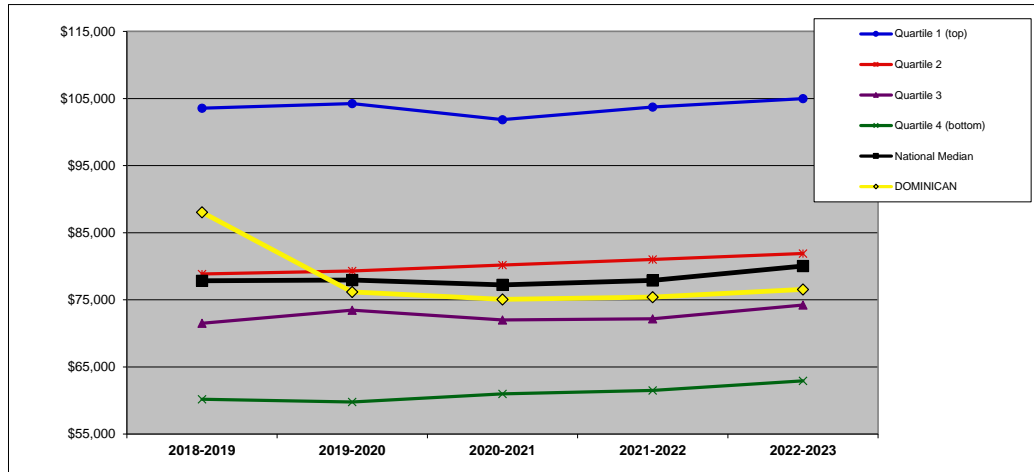
FULL PROFESSOR AVERAGE SALARY (\$): BY FINANCIAL RESOURCES (10F)

DEFINITION: The average salary for full professors equated to a 9-month contract. (All national and regional data are presented as medians.)

	2018-2019	2019-2020	2020-2021	2021-2022	2022-2023	Y1 to Y5 Change
DOMINICAN	\$ 88,050	\$ 76,177	\$ 75,072	\$ 75,399	\$ 76,560	-13.0%

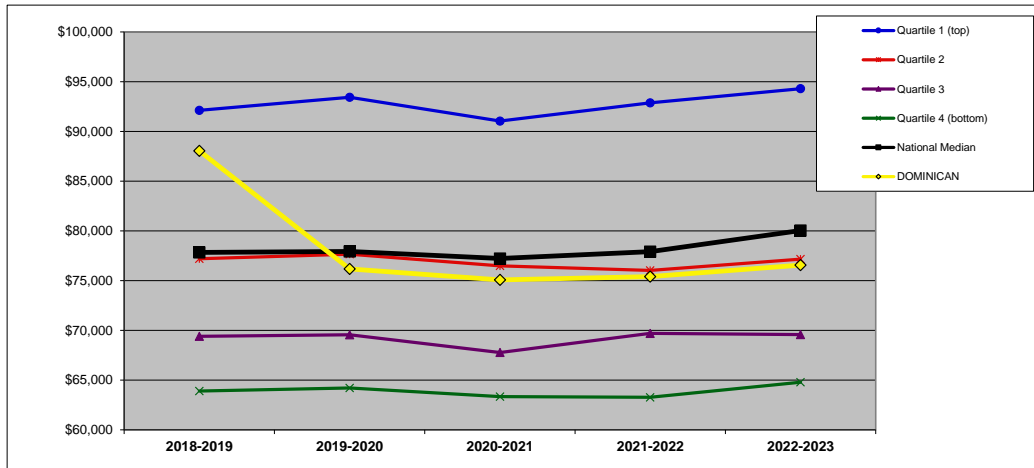
QUARTILES	
NATIONAL	2
REGIONAL	2

NATIONAL: FINANCIAL RESOURCES (n=782).



	2018-2019	2019-2020	2020-2021	2021-2022	2022-2023	Y1 to Y5 Change
Quartile 1 (top)	\$ 103,567	\$ 104,239	\$ 101,853	\$ 103,737	\$ 104,981	1.4%
Quartile 2	\$ 78,855	\$ 79,302	\$ 80,185	\$ 81,023	\$ 81,909	3.9%
Quartile 3	\$ 71,506	\$ 73,453	\$ 71,990	\$ 72,189	\$ 74,227	3.8%
Quartile 4 (bottom)	\$ 60,197	\$ 59,779	\$ 60,986	\$ 61,517	\$ 62,930	4.5%
National Median	\$ 77,845	\$ 77,942	\$ 77,228	\$ 77,910	\$ 80,035	2.8%
DOMINICAN	\$ 88,050	\$ 76,177	\$ 75,072	\$ 75,399	\$ 76,560	-13.0%

MIDWEST REGION: FINANCIAL RESOURCES (n=205).



	2018-2019	2019-2020	2020-2021	2021-2022	2022-2023	Y1 to Y5 Change
Quartile 1 (top)	\$ 92,116	\$ 93,429	\$ 91,044	\$ 92,864	\$ 94,294	2.4%
Quartile 2	\$ 77,204	\$ 77,655	\$ 76,485	\$ 76,025	\$ 77,165	0.0%
Quartile 3	\$ 69,393	\$ 69,558	\$ 67,771	\$ 69,700	\$ 69,570	0.3%
Quartile 4 (bottom)	\$ 63,907	\$ 64,200	\$ 63,332	\$ 63,273	\$ 64,785	1.4%
National Median	\$ 77,845	\$ 77,942	\$ 77,228	\$ 77,910	\$ 80,035	2.8%
DOMINICAN	\$ 88,050	\$ 76,177	\$ 75,072	\$ 75,399	\$ 76,560	-13.0%

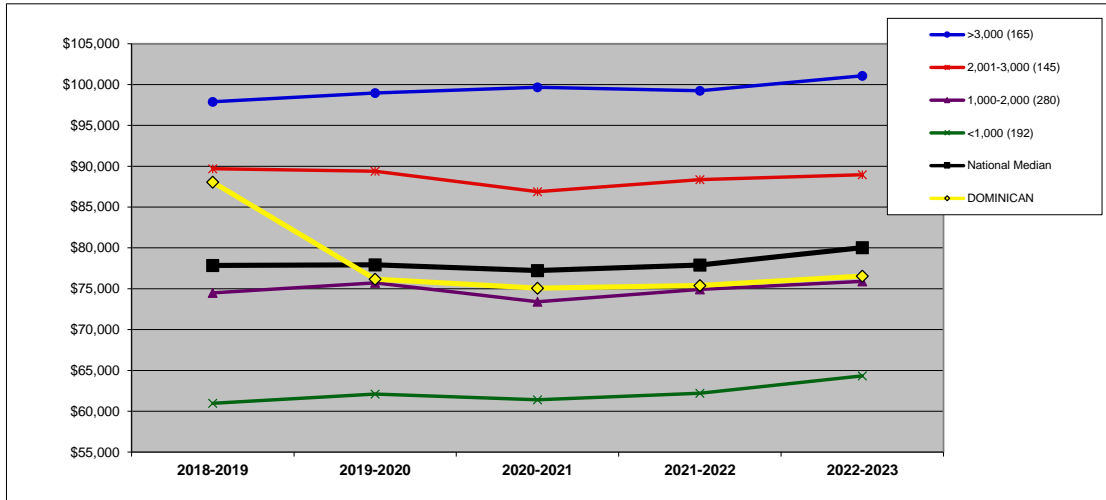
FULL PROFESSOR AVERAGE SALARY (\$): BY ENROLLMENT SIZE (10S)

DEFINITION: The average salary for full professors equated to a 9-month contract. (All national and regional data are presented as medians.)

	2018-2019	2019-2020	2020-2021	2021-2022	2022-2023	Y1 to Y5 Change
DOMINICAN	\$ 88,050	\$ 76,177	\$ 75,072	\$ 75,399	\$ 76,560	-13.0%

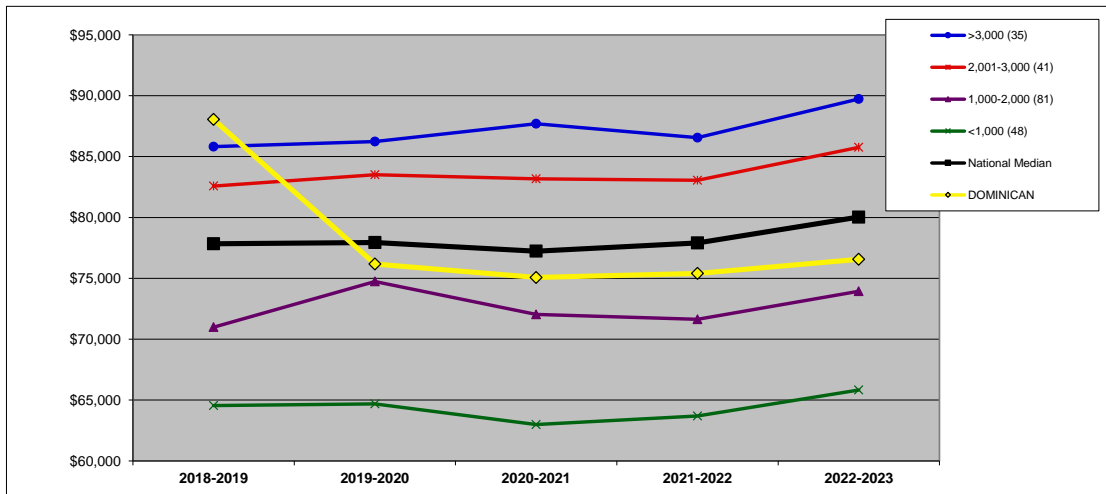
SIZE 2,001-3,000

NATIONAL: SIZE (n=782).



	2018-2019	2019-2020	2020-2021	2021-2022	2022-2023	Y1 to Y5 Change
>3,000 (165)	\$ 97,897	\$ 98,970	\$ 99,679	\$ 99,247	\$ 101,077	3.2%
2,001-3,000 (145)	\$ 89,697	\$ 89,380	\$ 86,886	\$ 88,354	\$ 88,956	-0.8%
1,000-2,000 (280)	\$ 74,504	\$ 75,714	\$ 73,407	\$ 74,929	\$ 75,905	1.9%
<1,000 (192)	\$ 60,975	\$ 62,113	\$ 61,414	\$ 62,209	\$ 64,335	5.5%
National Median	\$ 77,845	\$ 77,942	\$ 77,228	\$ 77,910	\$ 80,035	2.8%
DOMINICAN	\$ 88,050	\$ 76,177	\$ 75,072	\$ 75,399	\$ 76,560	-13.0%

MIDWEST REGION: SIZE (n=205).



	2018-2019	2019-2020	2020-2021	2021-2022	2022-2023	Y1 to Y5 Change
>3,000 (35)	\$ 85,820	\$ 86,238	\$ 87,695	\$ 86,562	\$ 89,735	4.6%
2,001-3,000 (41)	\$ 82,578	\$ 83,515	\$ 83,179	\$ 83,059	\$ 85,760	3.9%
1,000-2,000 (81)	\$ 70,986	\$ 74,738	\$ 72,035	\$ 71,631	\$ 73,943	4.2%
<1,000 (48)	\$ 64,554	\$ 64,679	\$ 62,990	\$ 63,693	\$ 65,826	2.0%
National Median	\$ 77,845	\$ 77,942	\$ 77,228	\$ 77,910	\$ 80,035	2.8%
DOMINICAN	\$ 88,050	\$ 76,177	\$ 75,072	\$ 75,399	\$ 76,560	-13.0%

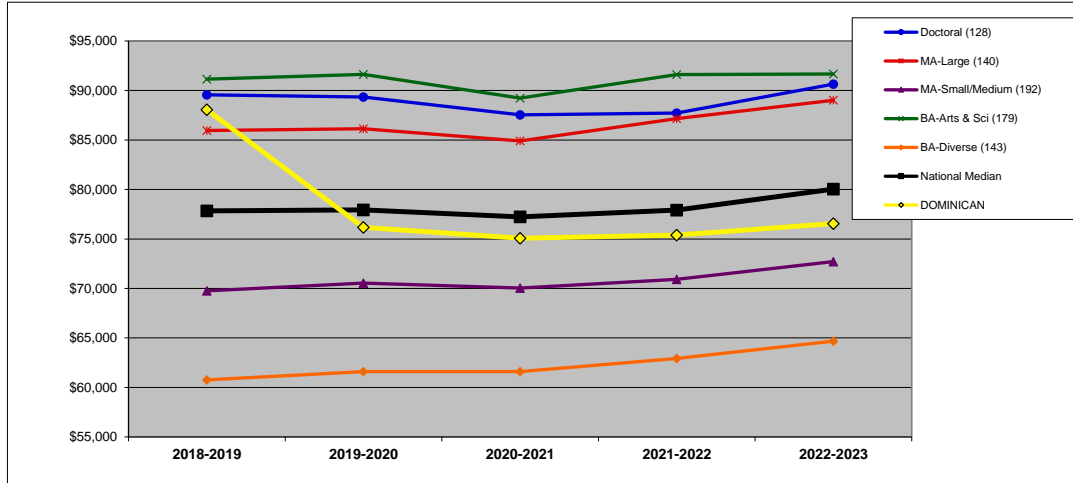
FULL PROFESSOR AVERAGE SALARY (\$): BY CARNEGIE CLASSIFICATION (10C)

DEFINITION: The average salary for full professors equated to a 9-month contract. See Introduction for information on the Carnegie classifications. (All national and regional data are presented as medians.)

	2018-2019	2019-2020	2020-2021	2021-2022	2022-2023	Y1 to Y5 Change
DOMINICAN	\$ 88,050	\$ 76,177	\$ 75,072	\$ 75,399	\$ 76,560	-13.0%

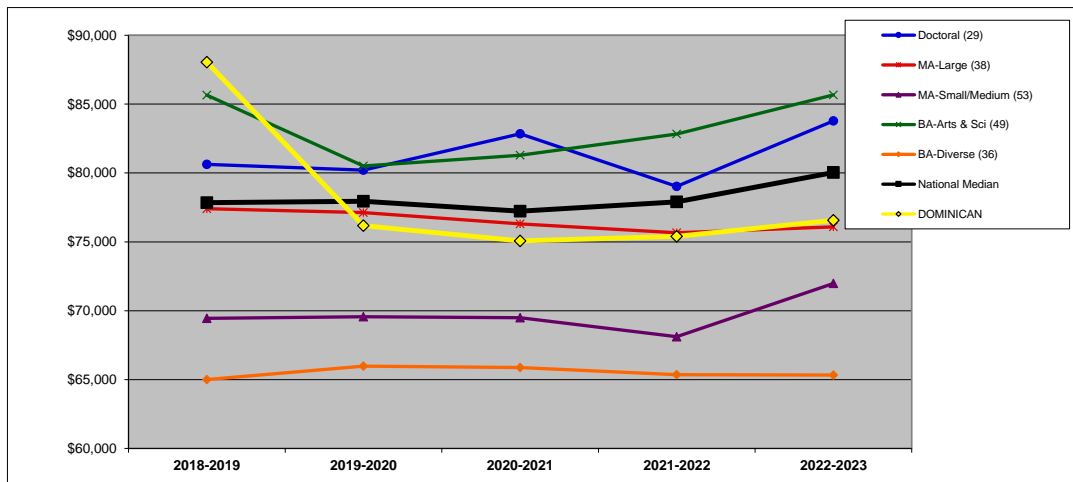
CARNEGIE MA-Larger

NATIONAL: CARNEGIE (n=782).



	2018-2019	2019-2020	2020-2021	2021-2022	2022-2023	Y1 to Y5 Change
Doctoral (128)	\$ 89,554	\$ 89,342	\$ 87,537	\$ 87,719	\$ 90,641	1.2%
MA-Large (140)	\$ 85,955	\$ 86,128	\$ 84,903	\$ 87,162	\$ 89,012	3.6%
MA-Small/Medium (192)	\$ 69,758	\$ 70,531	\$ 70,047	\$ 70,926	\$ 72,714	4.2%
BA-Arts & Sci (179)	\$ 91,145	\$ 91,621	\$ 89,230	\$ 91,607	\$ 91,664	0.6%
BA-Diverse (143)	\$ 60,762	\$ 61,611	\$ 61,611	\$ 62,930	\$ 64,677	6.4%
National Median	\$ 77,845	\$ 77,942	\$ 77,228	\$ 77,910	\$ 80,035	2.8%
DOMINICAN	\$ 88,050	\$ 76,177	\$ 75,072	\$ 75,399	\$ 76,560	-13.0%

MIDWEST REGION: CARNEGIE (n=205).



	2018-2019	2019-2020	2020-2021	2021-2022	2022-2023	Y1 to Y5 Change
Doctoral (29)	\$ 80,631	\$ 80,210	\$ 82,848	\$ 79,027	\$ 83,782	3.9%
MA-Large (38)	\$ 77,407	\$ 77,121	\$ 76,305	\$ 75,660	\$ 76,088	-1.7%
MA-Small/Medium (53)	\$ 69,444	\$ 69,558	\$ 69,496	\$ 68,114	\$ 71,979	3.7%
BA-Arts & Sci (49)	\$ 85,655	\$ 80,508	\$ 81,295	\$ 82,838	\$ 85,671	0.0%
BA-Diverse (36)	\$ 65,002	\$ 65,974	\$ 65,876	\$ 65,359	\$ 65,328	0.5%
National Median	\$ 77,845	\$ 77,942	\$ 77,228	\$ 77,910	\$ 80,035	2.8%
DOMINICAN	\$ 88,050	\$ 76,177	\$ 75,072	\$ 75,399	\$ 76,560	-13.0%

DATA INFORMATION: DEFINITIONS, IPEDS SOURCES, AND FORMULAS

To use this appendix, visit <http://nces.ed.gov/ipeds/datacenter/> and follow these steps:

- select "Compare Institutions"
- enter your institution's name
- select "Continue" to see variables

1) TOTAL FALL ENROLLMENT

Definition: Total fall full-time equivalent (FTE) enrollment, including undergraduate, graduate, and first-professional students.

IPEDS: Frequently used/Derived variables
Fall enrollment/retention rates
Total, full- and part-time enrollment and fall FTE
Full-time equivalent enrollment (Fall enrollment derivation)

2) FIRST-YEAR ENROLLMENT

Definition: Total fall full-time, first-time degree-seeking undergraduate students.

IPEDS: Fall Enrollment
Gender, attendance status, and level of student
Fall 1980, Fall 1984 to current year
Qualifying variable: First time
Full time total

3) ADMISSIONS YIELD RATE (%)

Definition: Percentage of admitted students who enrolled.

IPEDS: Admissions and Test Scores
Admissions and test scores
Number of applications, admissions, and enrollees
Admissions total
Enrolled total

Formula:
$$\frac{\text{Enrolled total}}{\text{Admissions total}}$$

4) RETENTION RATE (%)

Definition: The first to second year retention rate is the percentage of the fall full-time cohort (minus exclusions) that re-enrolled at the institution as either full- or part-time students in the fall of the next year.

IPEDS: Retention rates, Entering Class and Student to faculty ratio
Retention rates
Fall 2003 to current year
Full-time retention rate

5) GRADUATION RATE (%)

Definition: The six-year, cohort graduation rate for full-time, first-time degree-seeking undergraduate students. For example, the Fall 2016 Cohort rate is the percentage that graduated by end of Summer 2022.

IPEDS: Graduation Rates
Graduation rate data within 150 percent of normal time - 4-year and 2-year institutions
Gender - 1997 to current year
Qualifying variables: Bachelor's or equivalent degree/certificate-seeking subcohort (4-year institutions); select both Adjusted cohort (revised cohort minus exclusions) and Completers within 150% of normal time total
Grand total

Formula:
$$\frac{\text{Completers within 150\% of normal time}}{\text{Adjusted Cohort (revised cohort minus exclusions)}}$$

6) STUDENT/FACULTY RATIO

Definition: Total fall full-time equivalent (FTE) enrollment, including undergraduate, graduate, and first-professional students, divided by instructional faculty FTE.

IPEDS: Frequently used/Derived variables
Average salaries and full-time equivalent staff
Full-time equivalent staff by occupational category: 2012-13 to current year (new HR occupational categories based on SOC 2010)
Instructional, research and public service FTE staff

Frequently used/Derived variables
Fall enrollment/retention rates
Total, full- and part-time enrollment and fall FTE
Full-time equivalent enrollment (Fall enrollment derivation)

Formula:
$$\frac{\text{Full-time equivalent enrollment (Fall enrollment derivation)}}{\text{Instructional, research and public service FTE staff}}$$

7) PART-TIME FACULTY (%)

Definition: Full-time equivalent (FTE) for part-time instructional faculty as a percentage of total instructional faculty FTE.

IPEDS: Human Resources
Full- and part-time medical and non-medical staff by occupational category, faculty and tenure status
New HR occupational categories based on SOC 2010
Qualifying variable: Instructional, research and public service
Part-time employees

Frequently used/Derived variables
Average salaries and full-time equivalent staff
Full-time equivalent staff by occupational category: 2012-13 to current year (new HR occupational categories based on SOC 2010)
Instructional, research and public service FTE staff

Formula:
$$\frac{(\text{Part-time employees} / 3)}{\text{Instructional, research and public service FTE staff}}$$

8) ASSISTANT PROFESSOR AVERAGE SALARY (\$)

Definition: The average salary for assistant professors equated to a 9-month contract.

IPEDS: Frequently used/Derived variables

Average salaries and full-time equivalent staff

Average salaries of full-time non-medical instructional staff equated to 9-month contracts, by academic rank: 2012-13 to current year

Average salary equated to 9 months of full-time instructional staff - assistant professors

9) ASSOCIATE PROFESSOR AVERAGE SALARY (\$)

Definition: The average salary for associate professors equated to a 9-month contract.

IPEDS: Frequently used/Derived variables

Average salaries and full-time equivalent staff

Average salaries of full-time non-medical instructional staff equated to 9-month contracts, by academic rank: 2012-13 to current year

Average salary equated to 9 months of full-time instructional staff - associate professors

10) FULL PROFESSOR AVERAGE SALARY (\$)

Definition: The average salary for full professors equated to a 9-month contract.

IPEDS: Frequently used/Derived variables

Average salaries and full-time equivalent staff

Average salaries of full-time non-medical instructional staff equated to 9-month contracts, by academic rank: 2012-13 to current year

Average salary equated to 9 months of full-time instructional staff - professors